

Bluetooth MIDI Connection Tutorial
For DORMiDi
(Part of the software)
V1.1.0

Directory

1.	Garageband(iOS/Mac)	2
2.	Simply Piano(iOS)	2
3.	Windows10	3
4.	Android	6
4.1.	Software with Bluetooth MIDI	6
4.2.	Software without Bluetooth MIDI	6

(Note: Bluetooth MIDI needs to be connected in the software settings, not in the system settings.)

1. Garageband(iOS/Mac)

Turn on the Bluetooth function of the mobile phone/computer, and then turn on Garageband, as shown in the figure:



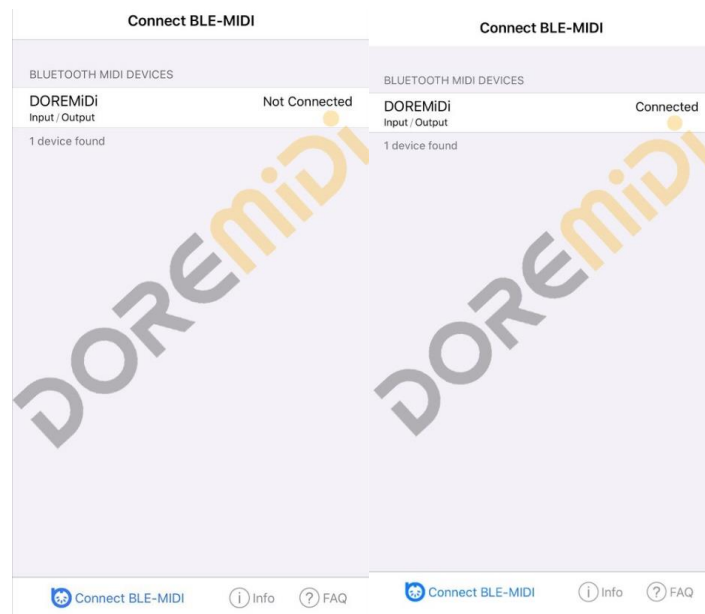
2. Simply Piano(iOS)

Some DAW software does not have a Bluetooth midi connection option, but it does not mean that the software cannot use Bluetooth midi. Just use the "BLE-MIDI" APP to connect to the Bluetooth midi device and reopen the DAW software, and you can use the Bluetooth midi function. Take "Simply Piano" as an example:

1. Turn on the Bluetooth function of the mobile phone/computer.
2. Open the Apple Store, download the Bluetooth MIDI connection tool, search for "BLE-MIDI" to download.



3. Open the "BLE-MIDI" APP.
4. Click "DOREMiDi" to connect, it shows as "Connected", it is connected, then go back to the desktop, re-open the "Simply Piano" APP and connect it to use. **(Note: Reopen the " Simply Piano " APP here)**



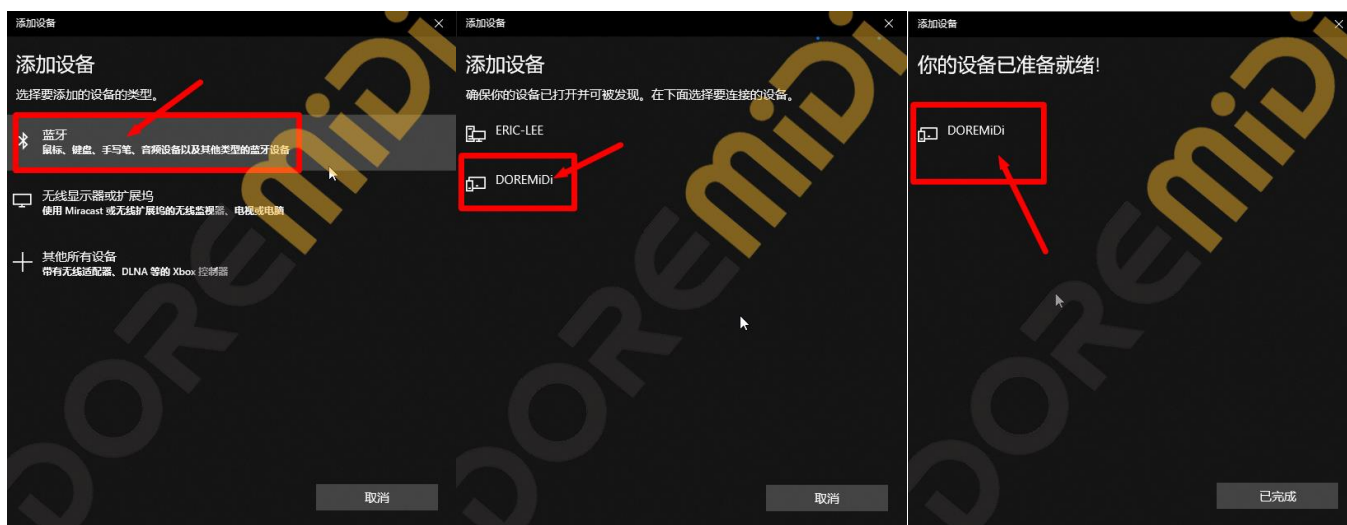
3. Windows10

The specific process is: MIDiberry accepts the Bluetooth midi input signal and sends it to a virtual midi device (generated by LoopMIDI). Then, in your DAW software, map this virtual midi device as midi input/output, so that you can receive/send midi signals to Bluetooth in the host.

- Midiberry download: <https://www.microsoft.com/en-us/store/p/midiberry/9n39720h2m05>
 - LoopMIDI download: <https://www.tobias-erichsen.de/software/loopmidi.html>
 - Note: According to official Microsoft news, there are currently Windows 10 computers that support Bluetooth MIDI.
 - Configuration steps:
1. Connect your Windows 10 system to Bluetooth midi devices
Open the "Device" in the "Computer Settings" of Windows 10, and click "+Add Bluetooth or other device", as shown below.

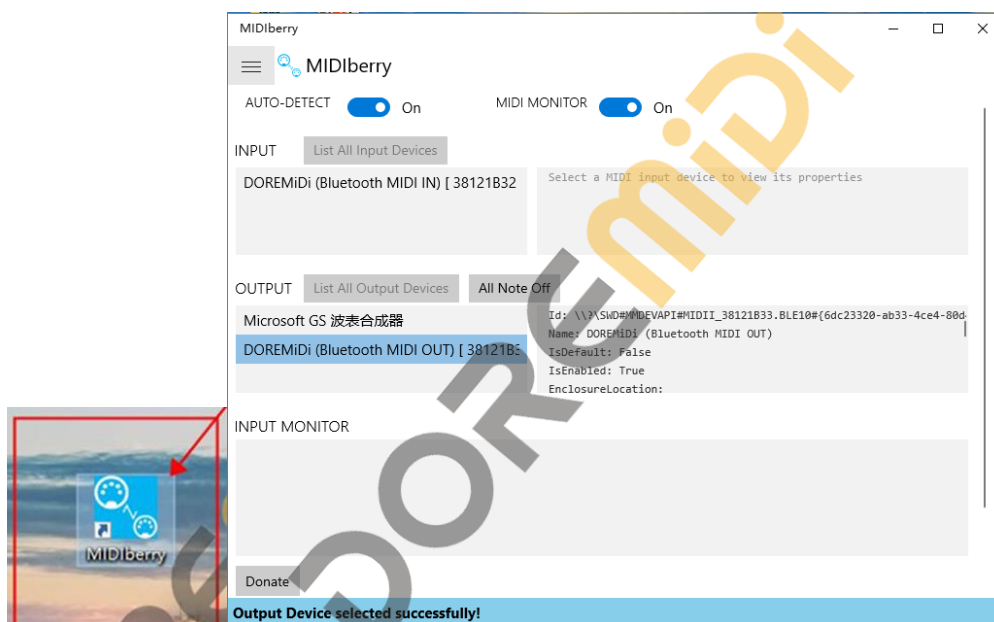


- Click "Bluetooth" Bluetooth, after entering, click "DOREMiDi" to connect the Bluetooth MIDI device.



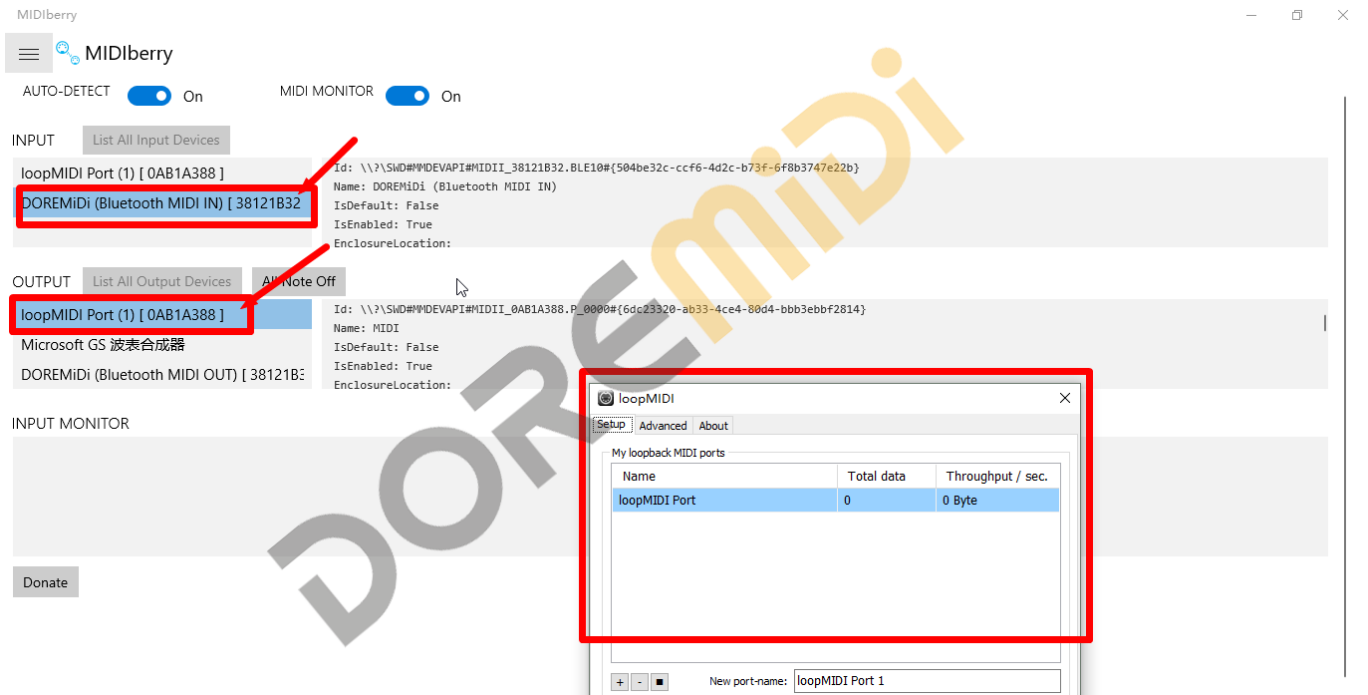
Now the computer system is successfully connected to Bluetooth MIDI, but the connection is still not available, because although the system is connected to this device, it does not know that it is a MIDI device.

- Double-click to open the newly downloaded "midiberry", and the following interface will appear after opening and running.



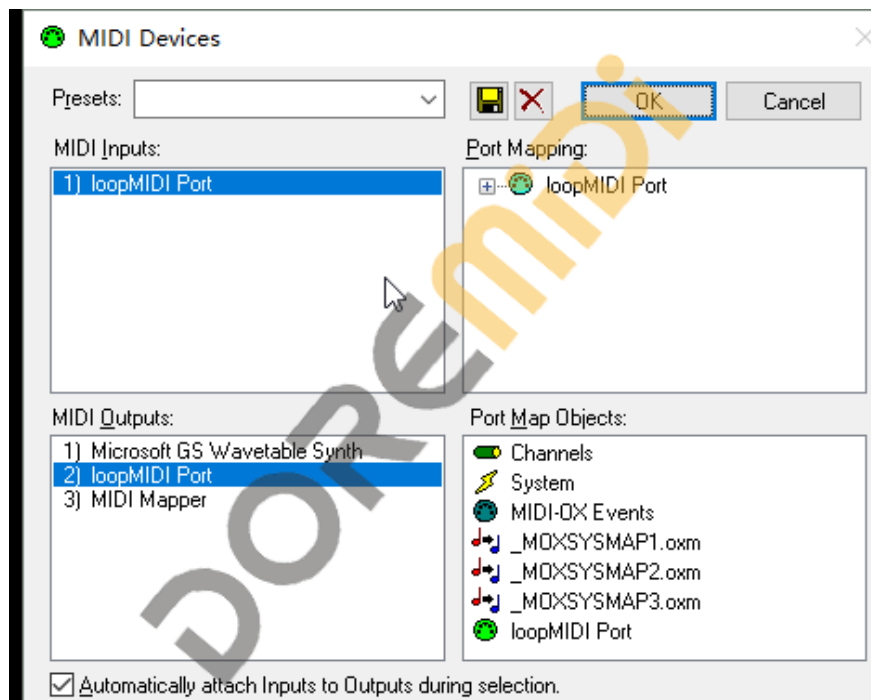
- Open the virtual MIDI device software "loopMIDI" to generate a virtual MIDI entry "loopMIDI Port"; then select "DOREMiDi" in INPUT and "loopMIDI Port" in OUTPUT, so that the signal from Bluetooth MIDI will be mapped to loopMIDI. In the same way, you can select "loopMIDI Port" in INPUT and "DOREMiDi" in OUTPUT, so that the computer's MIDI signal will be output to Bluetooth MIDI.





(Note: The Bluetooth midi of Windows 10 can only be configured to INPUT or OUTPUT MIDI messages, and cannot use INPUT and OUTPUT at the same time.)

- Finally open the DAW software, select "loopMIDI Port" as the MIDI Input/Output, then you can use it.



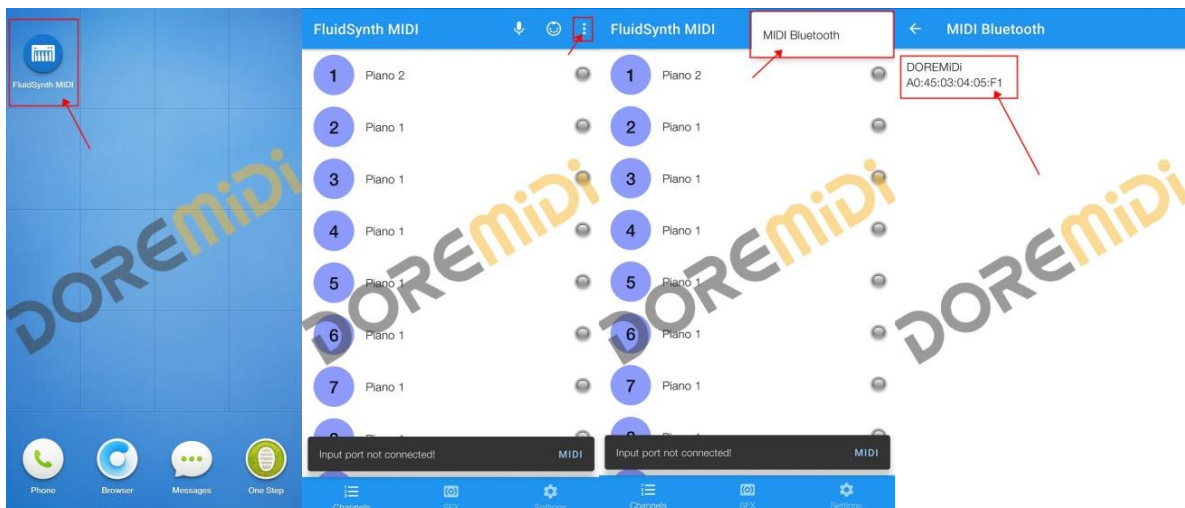
4. Android

(Note: It is necessary to explain that there are many types of Android phones, and some software is not fully compatible, so it may appear that the software cannot run normally on some Android phones.)

4.1. Software with Bluetooth MIDI

Some Android software, with Bluetooth MIDI function, can be connected to Bluetooth MIDI in the APP settings. Such as "FluidSynth MIDI Synthesizer", "POP Piano" and so on.

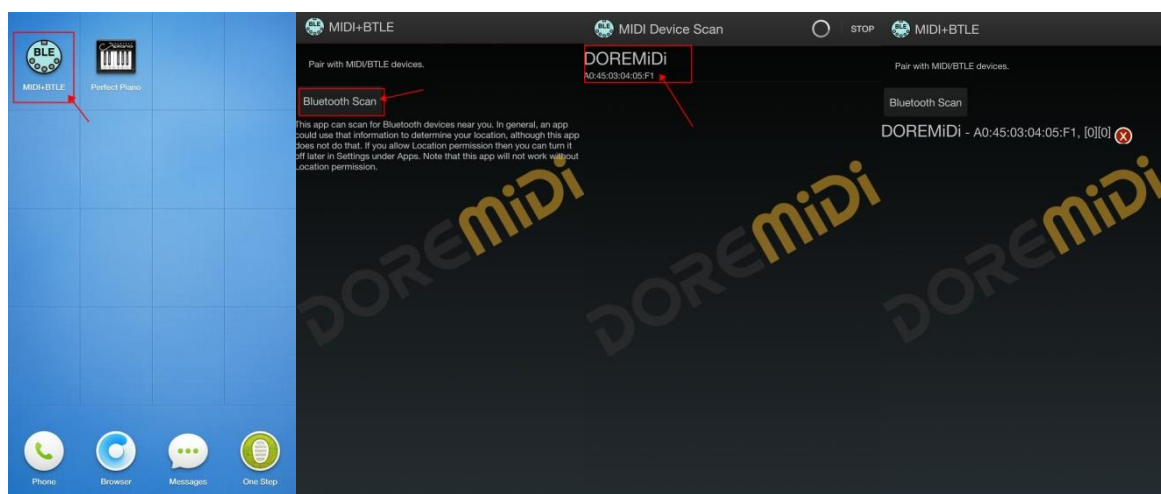
- Open "FluidSynth MIDI Synthesizer"
- Open the three dots in the upper right corner, click "MIDI Bluetooth", and connect to "DOREMiDi"



4.2. Software without Bluetooth MIDI

Some software does not have a Bluetooth MIDI connection, but you can connect to Bluetooth MIDI devices via "MIDI BLE Connect" or "Bluetooth MIDI Connect", then switch to the application software.

- Turn on the Bluetooth function of the mobile phone.
- Open the Google application market and search for "MIDI BLE Connect" or "Bluetooth MIDI Connect" to download (If you can't download, please contact customer service to ask for the installation package)
- Open the "MIDI BLE Connect" APP
- Click "Bluetooth Scan", and click "DOREMiDi" to connect



- e. Then switch to the application software you need, such as "Perfect Piano", "MIDI Keyboard", etc.



(Note: Some software uses this method, and may not be able to use Bluetooth MIDI. It is recommended to use software that supports Bluetooth MIDI.)