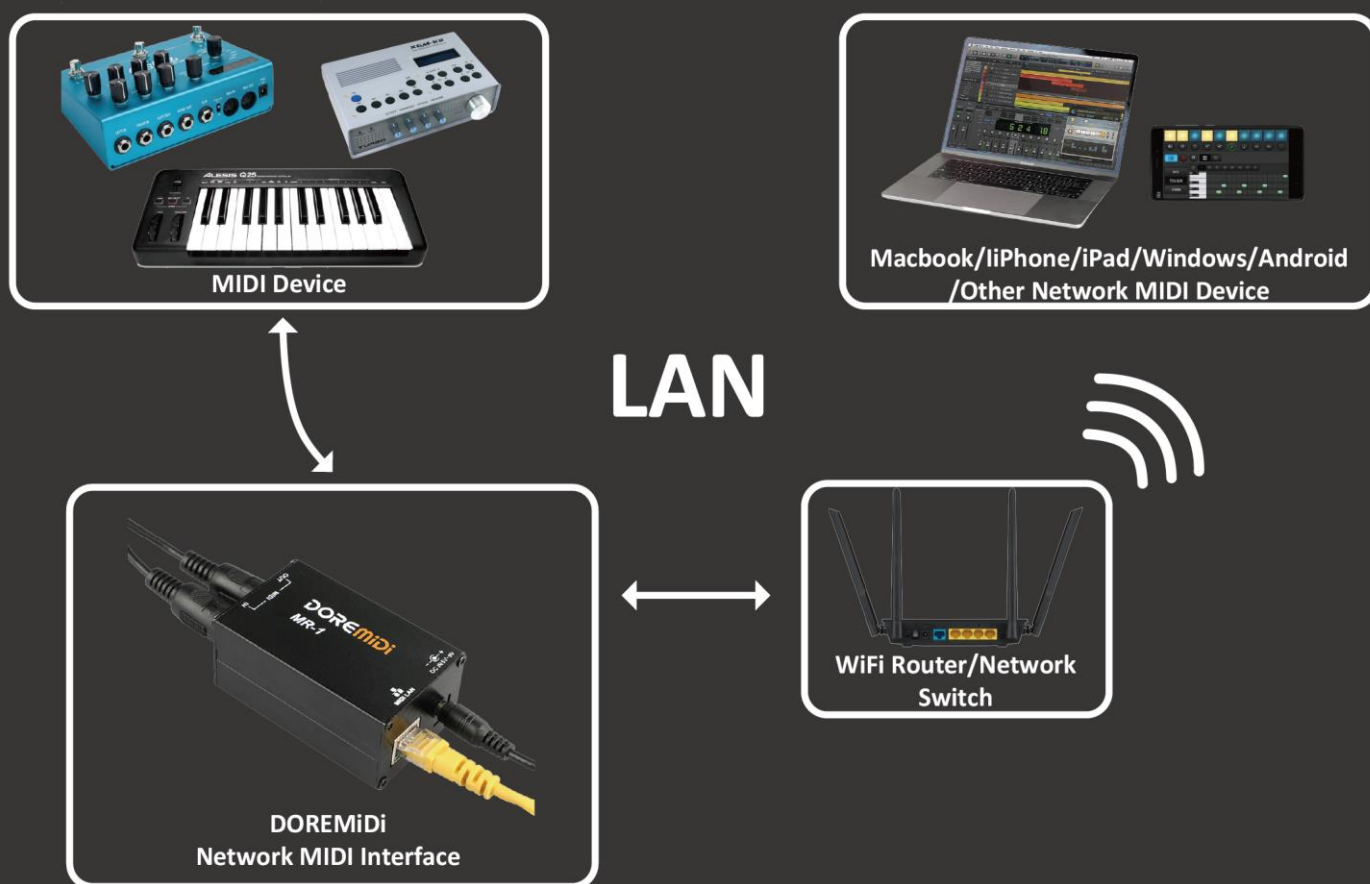


DOREMiDi NetWork MIDI Config



Instructions

1. Introduction.....	2
2. Network MIDI box connection	2
2.1. Connect MIDI devices	2
2.2. Power supply and connection to LAN	2
3. Using Network MIDI on Windows	3
3.1. Install RTP MIDI plug-in for Windows system	3
3.2. Configure rtpMIDI software.....	3
3.3. DAW software configuration.....	4
3.4. Common problems and solutions of network MIDI in Windows	4
3.4.1. No network MIDI box name in rtpMIDI software.....	4
3.4.2. DAW software cannot communicate with network MIDI devices	5
3.4.3. No response in rtpMIDI software	6
4. Using Network MIDI on iPad/iPhone	7
4.1. Install the plugin.....	7
4.2. Software configuration	7
4.3. DAW software application.....	7
4.4. Common problems and solutions for iPad/iPhone.....	8
4.4.1. No network MIDI device name in MIDI Network software	8
4.4.2. DAW software cannot communicate with MIDI devices	8
5. Using Network MIDI on Mac Computer	8
5.1. Connection tutorial	8
5.2. Common problems and solutions	8
6. Use network MIDI on Android devices	8
6.1. Software installation	8
6.2. Software configuration	9
6.3. Common problems and solutions	9
7. Imprint.....	10

1. Introduction

This document uses the MIDI network box (MR-1) as a reference to guide users to configure network MIDI operation methods on Windows, Macbook, iPhone/iPad and Android, to help users quickly get started using network MIDI, and solve the problem of configuring network MIDI Common problems encountered in the process.

2. Network MIDI box connection

2.1. Connect MIDI devices

Connect the network MIDI box (MR-1) to the MIDI device. Note that MIDI OUT is connected to the IN of the MIDI device, and MIDI IN is connected to the OUT of the MIDI device.



2.2. Power supply and connection to LAN

Power the network MIDI box (MR-1) (power supply supports 5-9VDC/0.5A), and connect the "MIDI LAN" to the WiFi router or network switch via a network cable.

After successfully connecting to the LAN, the yellow light of the LAN interface "MIDI LAN" will be on; when the network MIDI box has data communication with the LAN, the green light will be on.

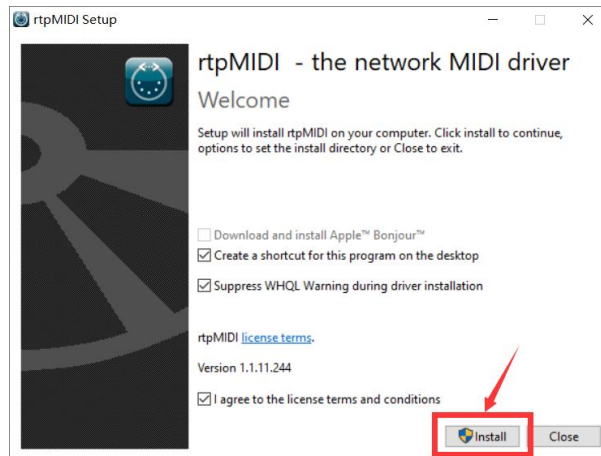


3. Using Network MIDI on Windows

Windows system: Windows 7 to Windows 10, 32-bit and 64-bit.


3.1. Install RTP MIDI plug-in for Windows system

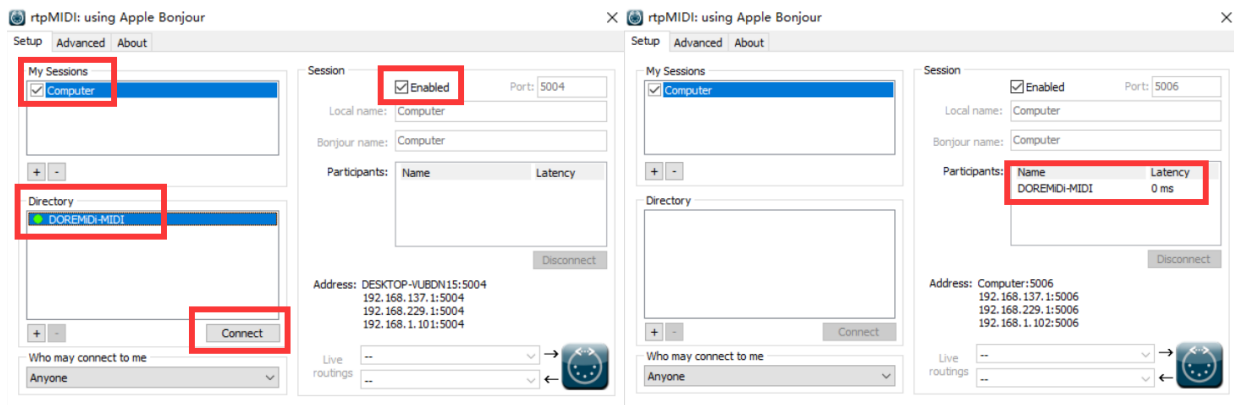
Plug-in download: <http://www.tobias-erichsen.de/software/rtpmidi.html>



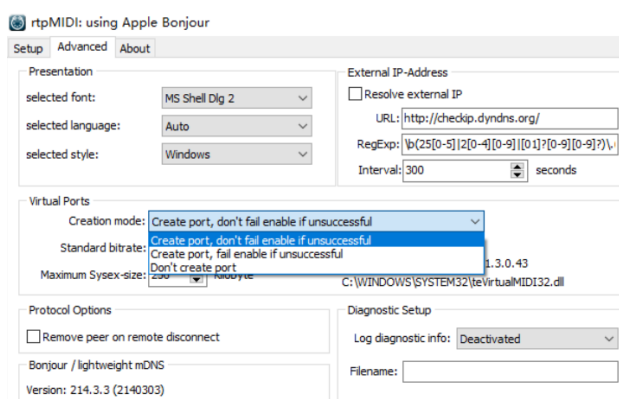
(Note: If your computer has not installed Bonjour service, you need to select "Download and install Apple Bonjour"; if your computer already has Bonjour service, this item cannot be selected.)

3.2. Configure rtpMIDI software

After installing the software, open the rtpMIDI software . Select "Computer" (the computer name will be displayed here), select "Enabled" to enable the computer to use the network MIDI function, select the network MIDI device "DOREMiDi-MIDI", click "Connect" to connect.

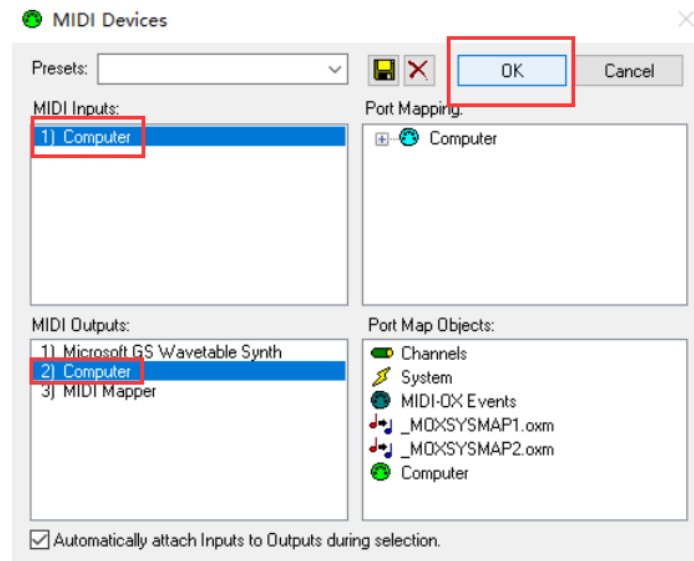


In "Advanced", select the following configuration. Here, the network MIDI box and the computer have been successfully connected through the LAN!



3.3. DAW software configuration

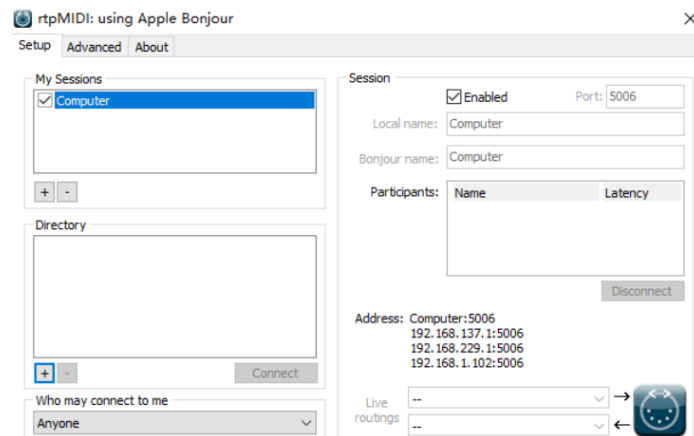
In the DAW software, select "Computer" (the computer name will be displayed here), and you can communicate with MIDI devices over the local area network.



3.4. Common problems and solutions of network MIDI in Windows

3.4.1. No network MIDI box name in rtpMIDI software

As the picture shows:

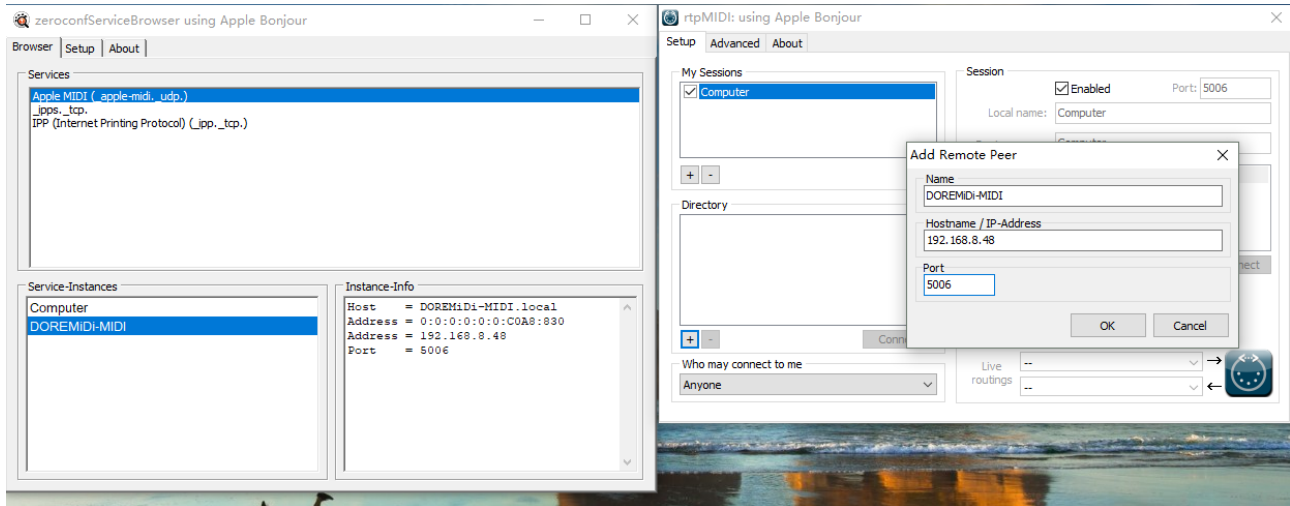


Solution:

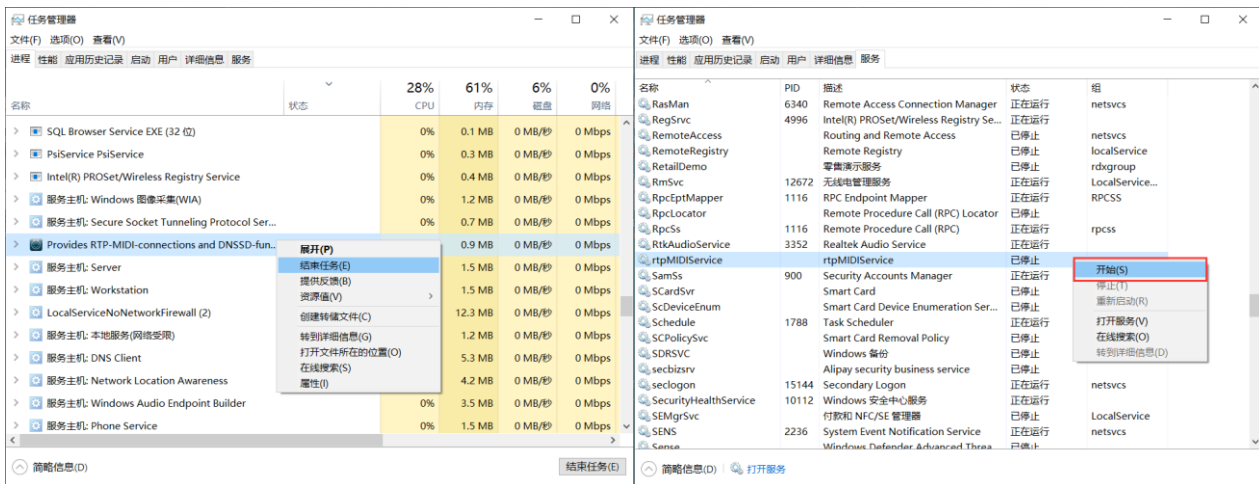
- 1) Re-power on the network MIDI box and connect the network cable, confirm that the network MIDI box is powered on and successfully connected to the LAN. After the connection is successful, the blue and green lights of the network port will light up, indicating that it has successfully connected to the LAN and can communicate.
- 2) Make sure that the computer and the network MIDI box are in the same local area network.
- 3) If the network MIDI device is still not found after operating the above two methods, it may be that the Bonjour service of the computer is not operating normally. Solution:

- Installation "zeroconfServiceBrowse" Software, download link:
http://www.tobias-erichsen.de/wp-content/uploads/2015/02/zeroconfServiceBrowserSetup_1_0_4_7.zip

- Open the software and select "Apple MIDI". If you see "DOREMiDi-MIDI", select the name. After selection, the address of the network MIDI device will be displayed (as shown in 192.168.8.48, the address is dynamically assigned, not fixed Address) and Port.
- Open the rtpMIDI software, click "+", enter the name, address, port, and click "OK" to connect successfully. As shown:



- 4) If the network MIDI device is not found in the "zeroconfServiceBrowser" software, the rtpMIDI service is operating abnormally. you can restart the computer and try.
- 5) If the computer is still not resolved after restarting. Open the Windows Task Manager (shortcut Ctrl+Alt+Del), find "Provides RTP-MIDI-connections and DNSSD-functionality" in "Process", right-click to open, select "End Task"; then in "Services" Find "rtpMIDIService", right-click and select "Start". Then reopen the rtpMIDI software to solve it!



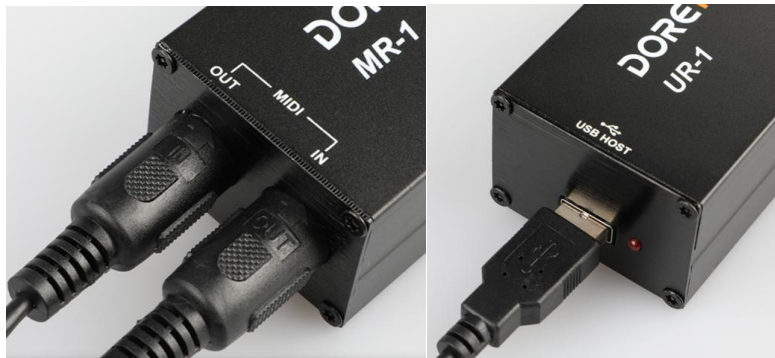
3.4.2. DAW software cannot communicate with network MIDI devices

First, check whether the network MIDI configuration is normal according to [3.4.1](#). If it has been configured normally, it is usually because the network MIDI box is not properly connected to the MIDI instrument equipment.

Solution:

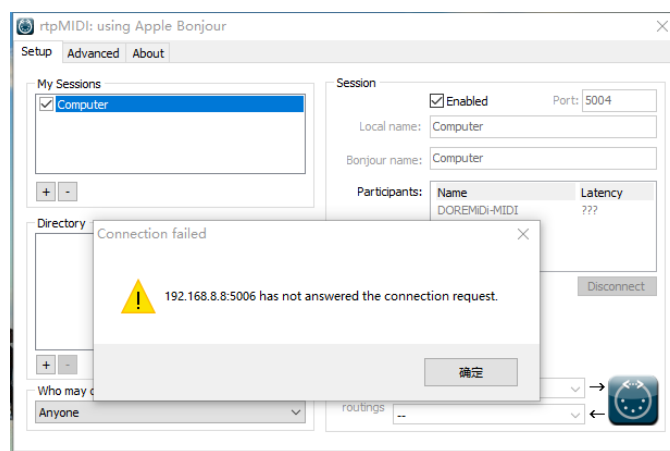
- 1) Check whether the network MIDI box and MIDI device are properly connected.
- 2) For MR-1, MIDI OUT is connected to the IN of the MIDI device, and MIDI IN is connected to the OUT of the MIDI device.

- For UR-1, if the MIDI device sends/receives data after normal connection, the red light of USB HOST will flash.



3.4.3. No response in rtpMIDI software

As the picture shows:



This problem is mainly because the IP address of the computer network is wrong. You need to set the IP address to obtain automatically to solve it!

Solution:

- Go to "Control Panel→Network and Internet→Network Connections", right-click "WLAN" and select "Properties".
- Select "TCP/IPv4" and click Properties.
- Configure to "Obtain IP address automatically" and "Obtain DSN server address automatically", click OK.
- Finally, reopen the rtpMIDI software and connect to the network MIDI device.



4. Using Network MIDI on iPad/iPhone

Plug-in system requirements: iOS8.0 and above, compatible devices: iPhone, iPad.

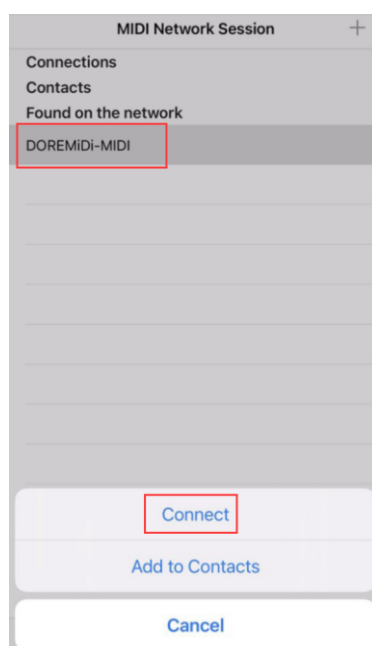
4.1. Install the plugin

In the APP Store, search for "MIDI Network" software and install it. As shown:



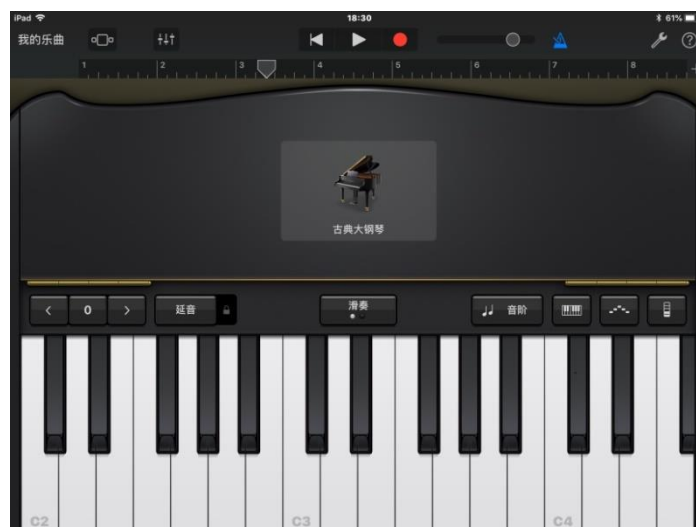
4.2. Software configuration

After installation, open the software, select the network MIDI device "DOREMiDi-MIDI", and select "Connect".



4.3. DAW software application

Open the application software (Garageband as an example), you can receive data from network MIDI devices.



4.4. Common problems and solutions for iPad/iPhone

4.4.1. No network MIDI device name in MIDI Network software

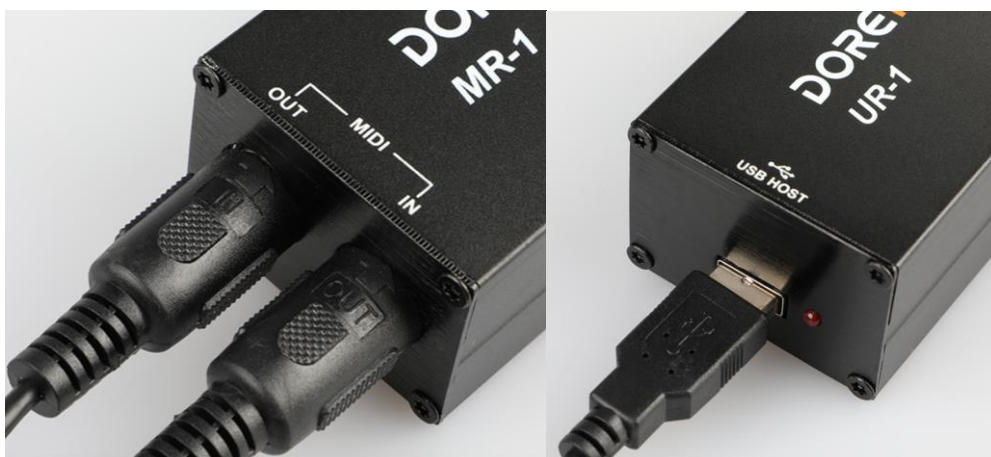
Solution:

- 1) Re-power on the network MIDI box and connect the network cable. Make sure that the network MIDI box is powered on and successfully connected to the LAN. After the connection is successful, the blue and green lights of the network port will light up, indicating that it has successfully connected to the LAN.
- 2) Make sure that the computer and the network MIDI box are in the same local area network.

4.4.2. DAW software cannot communicate with MIDI devices

Solution:

- 1) Check whether the network MIDI box and MIDI device are properly connected.
- 2) For MR-1, MIDI OUT is connected to the IN of the MIDI device, and MIDI IN is connected to the OUT of the MIDI device.
- 3) For UR-1, if the MIDI device sends/receives data after normal connection, the red light of USB HOST will flash.



5. Using Network MIDI on Mac Computer

5.1. Connection tutorial

<https://support.apple.com/zh-cn/guide/audio-midi-setup/ams1012/mac>

5.2. Common problems and solutions

Reference [4.4](#)

6. Use network MIDI on Android devices

6.1. Software installation

There are relatively few network MIDI software on Android devices. At present, it is found that the software with network MIDI function is TouchDAW, which is divided into a free trial version and a paid version, which can be downloaded on Google Play. System requirements: Android 4.0 and above.



TouchDAW Demo

npx 音乐与音频

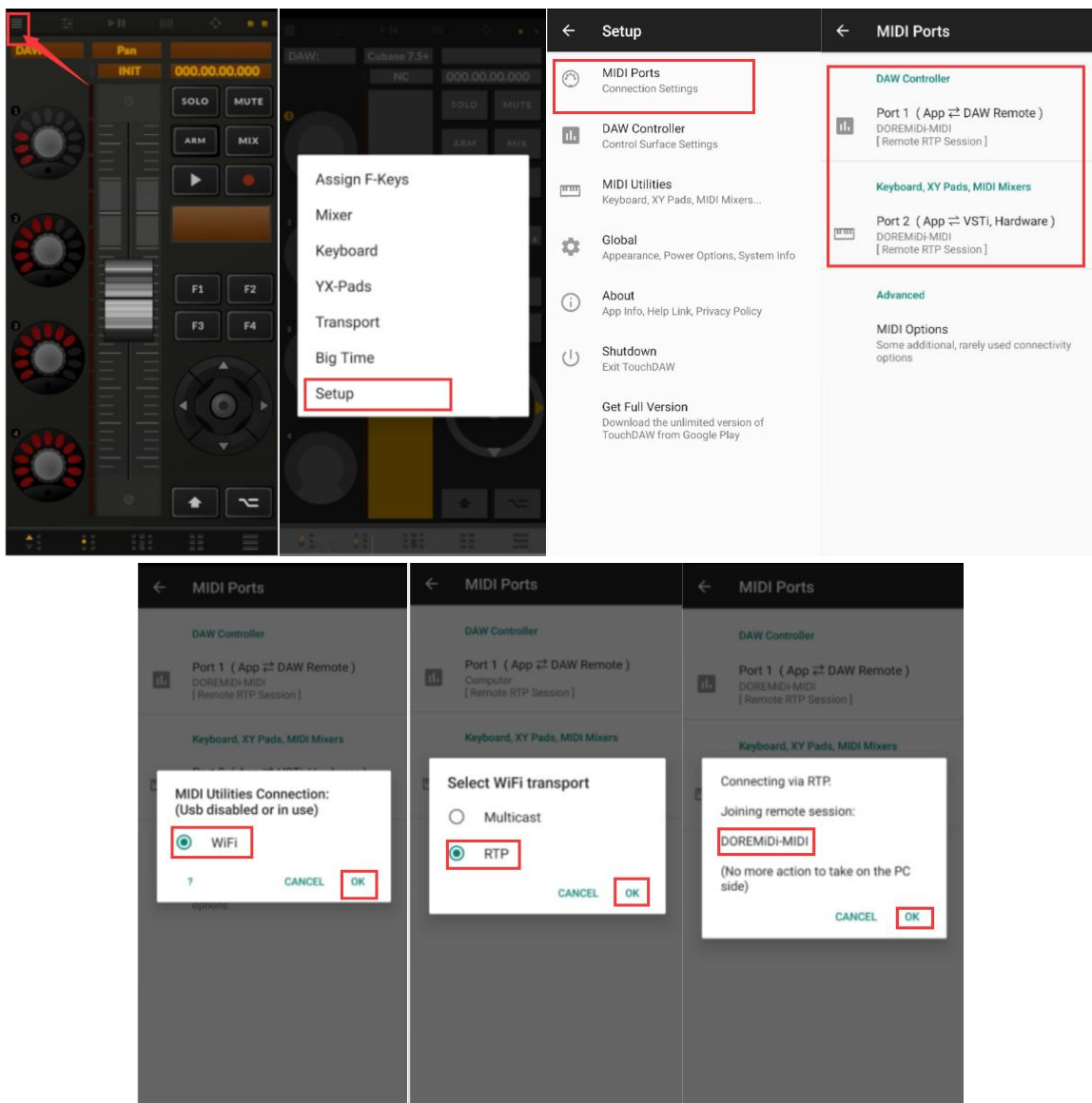
3+

⚠ 您没有任何设备。

📌 添加到心愿单

6.2. Software configuration

Open the software, click "☰" to set → select "Setup" → select "MIDI Ports" → select "DAW Controller" or "Keyboard, XY Pads, MIDI Mixers" → select "WiFi", click "OK" → select "RTP", Click "OK" → select "DOREMiDi-MIDI", click "OK"; after completing the configuration, you can use the software to send MIDI messages to network MIDI devices.



6.3. Common problems and solutions

Reference [4.4](#)

(Note: In addition, when the software is connected and configured, sometimes there will be multiple identical network MIDI names, or the network MIDI name can not be seen. Please try to restart the software, or restart the phone and then open the software. If you can't solve it, contact the software supplier Quotient.)

7. Imprint

Date	Version	Description
2020/11/3	1.0	First release document