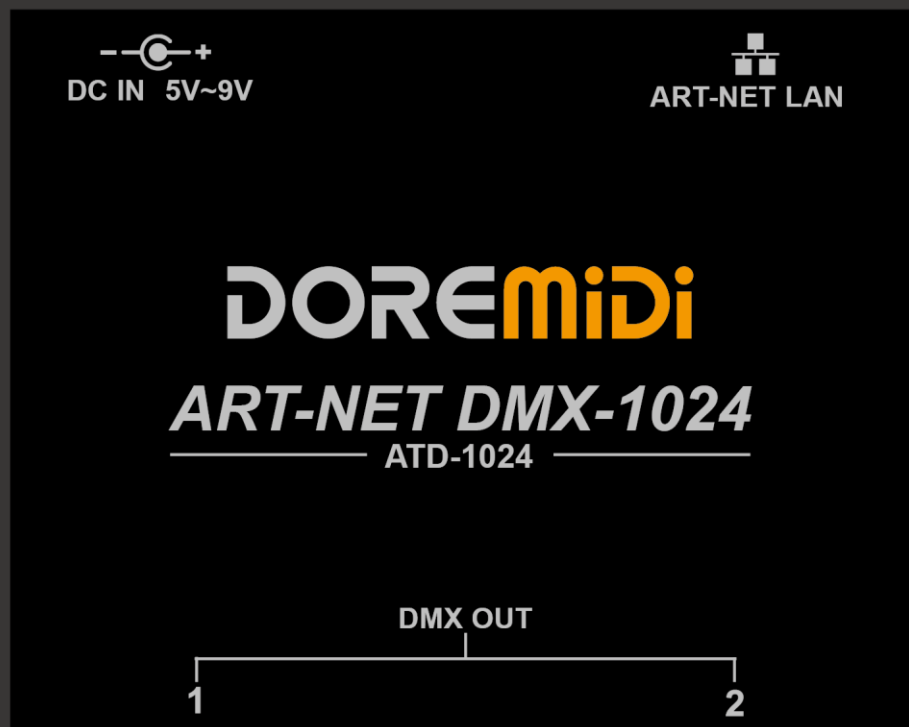


# ART-NET DMX-1024 Network Box (ATD-1024)

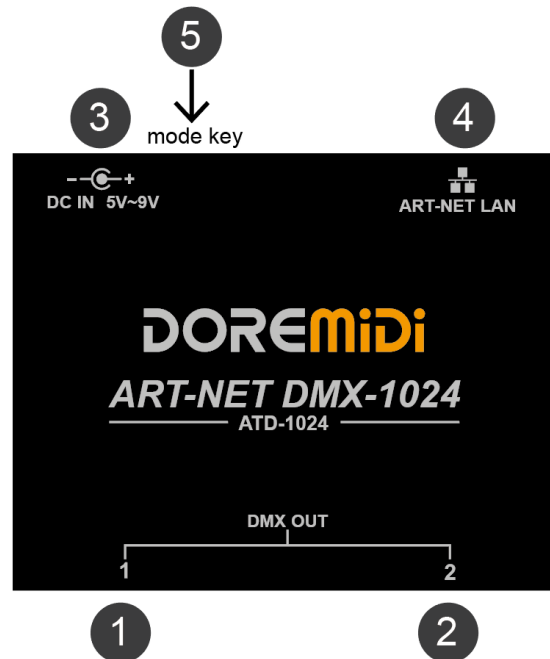


## Instructions

## 1. Introduction

ART-NET DMX-1024 network box (ATD-1024) is a DMX 1024 channel gateway controller designed by DOREMiDi. This product can connect DMX equipment with 3Pin XLR interface to the local area network, so that the computer can remotely control the DMX equipment through the local area network.

## 2. Appearance



- ① ② DMX XLR interface: Through the 3Pin XLR interface, to connect devices with DMX function. There is a working indicator.
- ③ DC IN 5V~9V: The product power supply interface uses a DC5.5\*2.1 plug to power the product. The power supply voltage is 5V~9VDC.
- ③ ART-NET LAN: The Ethernet interface, through the network cable, connects to the Ethernet equipment, such as routers, switches, etc. There is a working indicator.
- ⑤ Mode key: Mode button, double-click the mode for switching IP (DHCP mode/static IP mode), press and hold it and power on to enter upgrade mode.

## 3. Product Parameters

Name	Description
Model	ATD-1024
Size (L x W x H)	88*70*38mm
Weight	160g
XLR Interface	2 standard 3Pin XLR interfaces, each interface has 512 DMX channels
Ethernet Interface	Standard Ethernet ART-NET interface
DC In Interface	Use DC 5V~9V power supply
Indicator Light	Product power indicator, network communication indicator, XLR interface working indicator
XLR Compatibility	Compatible with all DMX devices with 3Pin XLR interface

#### 4. Steps for usage

1. Connection: Supply power to ATD-1024 through DC IN, DMX OUT is connected to DMX device using 3Pin XLR cable, ART NET LAN is connected to switch or router through network cable.

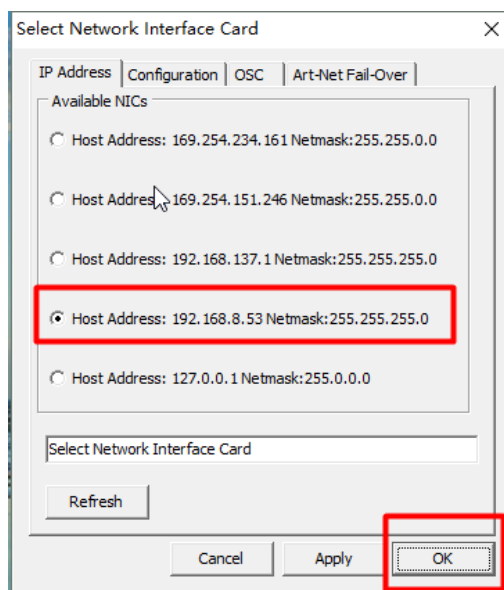
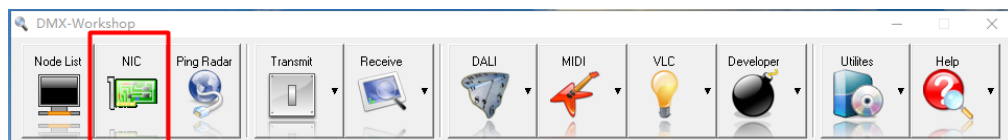
2. Switch between DHCP mode/Static IP mode/Upgrade mode:

Mode	Description
Static IP	Double-click the "Mode key" switch, the power indicator flashes 3 times. This mode is used by default. In this mode, the IP of ATD-1024 is manually configured, and the default IP address is 192.168.1.199.
DHCP	Double-click the "Mode key" switch, the power indicator flashes 5 times. In this mode, the IP address of the ATD-1024 is assigned by a router/switch with DHCP function.
Upgrade	Press and hold the "Mode Key", then power on the ATD-1024, then release the "Mode Key", the power indicator flashes. Use the "DOREMiDi Upgrade Tool" software to upgrade ATD-1024, detailed steps Please refer to "ATD-1024 Upgrade instructions"

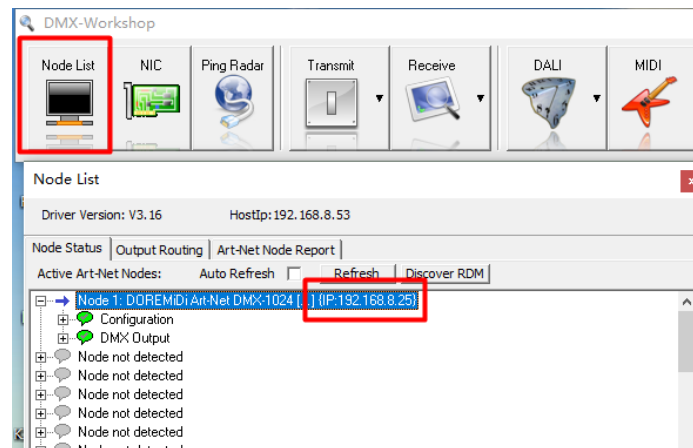
**(Note: After the ATD-1024 is in upgrade mode, double-clicking the "Mode key" no longer works.)**

3. Obtain the IP address of ATD-1024 in the network:

- Download "DMX-Workshop", and install "DMX-Workshop" according to the prompts.
- DMX-Workshop download link:  
<https://www.doremidi.cn/h-pd-39.html?fromColId=104>
- Open "DMX-Workshop" and click "NIC", select "Host Address: 192.168.8.53 Netmask: 255.255.255.0" and click "OK". As shown: **(Note: The IP address of each computer may be different)**



- Click "Node List" to find the IP address of the box and record it (note: the IP address of each box is different), as shown in the figure, the IP address is 192.168.8.25. As shown:



#### 4. Set the static IP address of ATD-1024

- Reset factory settings: If you forget the IP address of ATD-1024, please press and hold the hidden button for 5 seconds, the LED will flash, and ATD-1024 will be restored to factory settings, IP: 192.168.1.199

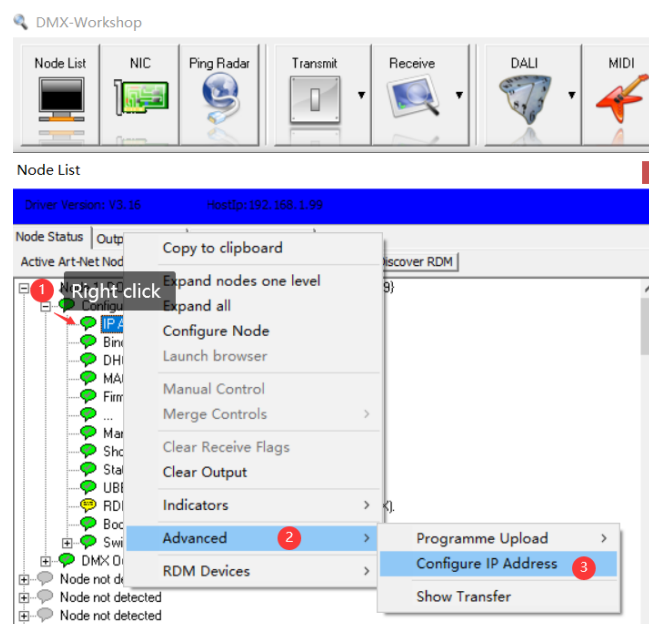
**(Note: If the LED does not flash, the product does not support for the setting of static IP, please upgrade the firmware, link: <https://www.doremidi.cn/h-pd-39.html?fromColld=104>)**

- Connect the ATD-1024 to the computer, set the network connection to use Ethernet, set the network segment of the computer, and ensure that the network segment of the computer is the same as that of the ATD-1024 (192.168.1).

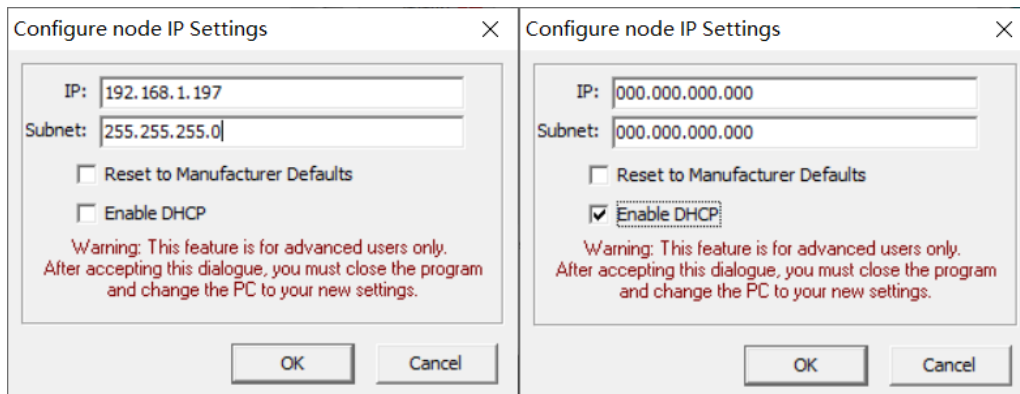
**(Note: What is the network segment?**

**For example: "IP: 192.168.1.199"; "192.168.1" is the network segment, and "199" can be any unique address (Range: 2~254). ATD-1024 and the computer need the same network segment to communicate.)**

- Open DMX-Workshop, select "DOREMiDi Art-Net DMX-1024", enter the configuration IP address, as shown in the figure:

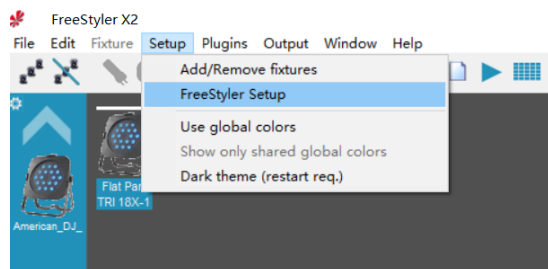


- Set a static IP address, the subnet generally uses 255.255.255.0. If you want to change the ATD-1024 to obtain the IP function automatically, you need to enable DHCP. After enabling, the ATD-1024 will use the automatic IP acquisition function.

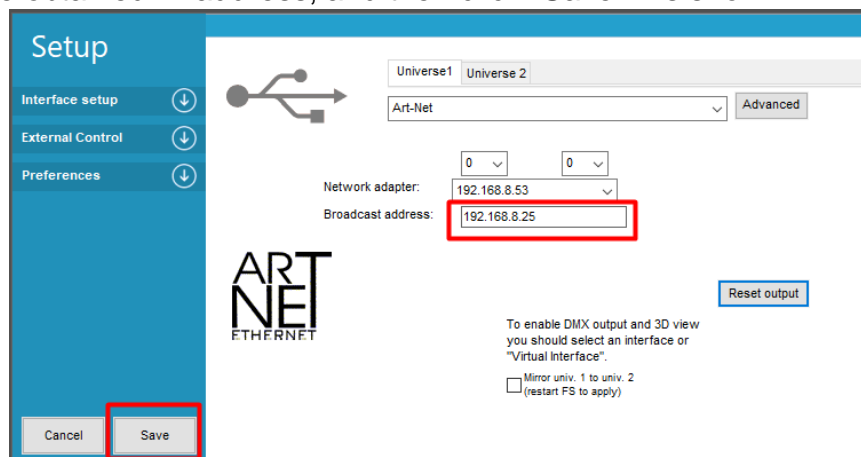


## 5. Software settings: Take FreeStyle X2 as an example

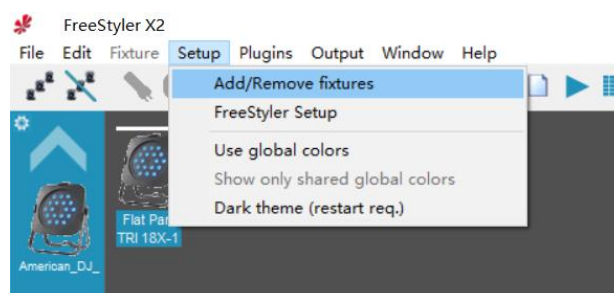
- Install FreeStyle X2 software:  
FreeStyle software download link: [www.freestylerdmx.be](http://www.freestylerdmx.be)
- Open the "FreeStyler" software, click "Setup" and select "FreeStyler Setup". As shown:



- Fill in the obtained IP address, and then click "Save". As shown:



- Open "Setup→Add/Remove fixtures" to add/remove the DMX devices that need to be controlled. As shown:



**5. Precautions**

1. This product contains a circuit board.
2. Rain or immersion in water may cause the product to malfunction.
3. Do not heat, press, or damage internal components.
4. Non-professional maintenance personnel are not allowed to disassemble the product.
5. The working voltage of the product is 5VDC, using a voltage lower or exceeding this voltage may cause the product to fail to work or be damaged.

**6. Q&A**

Question: The IP address of ATD-1024 cannot be obtained.

Answer: Please make sure that the "DMX Workshop" software has been installed correctly; and make sure that the software computer and ATD-1024 are in the same local area network; please turn off the computer firewall before setting.

Question: After connecting to the DMX lamp, the lamp cannot be controlled normally.

Answer: Please make sure that the DMX channel sent is consistent with the lamp.

If the problem is not resolved, please contact customer service.

---

Manufacturer: China Show (Shenzhen) Technology Co., Ltd.

Address: Room 910, Jiayu Building, Hongxing Community, Songgang Street, Baoan District, Shenzhen, Guangdong, China

Post Code: 518105

Customer Service Email: [info@doremidi.cn](mailto:info@doremidi.cn)