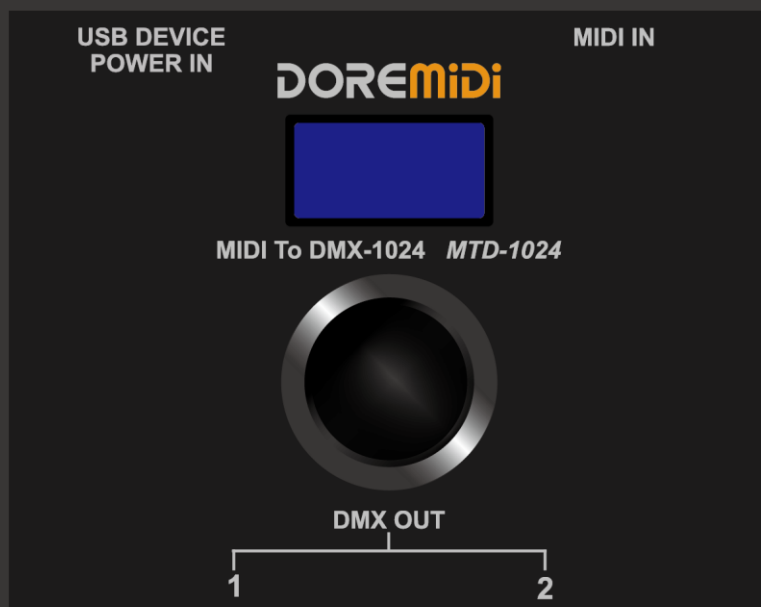


MIDI To DMX BOX (MTD-1024)

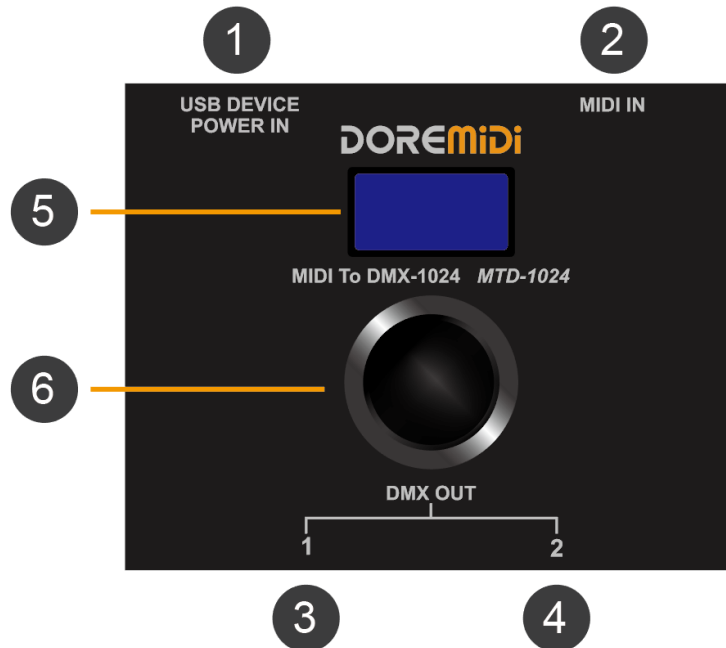


Instruction

1. Introduction

MIDI to DMX controller (MTD-1024) can convert MIDI messages to DMX messages. Supports MIDI Note/CC/After Touch MIDI messages, can map the value of MIDI messages to DMX channels, and can configure up to 1024 DMX channels. MTD-1024 can be used for MIDI performance, DMX lighting control scene.

2. Appearance



1 USB DEVICE: Product power supply port, power supply voltage 5VDC, current 1A, with USB MIDI function, it can also be connected to computers/mobile phones and other terminals to receive MIDI messages.

2 MIDI IN: MIDI DIN input port, use a five-pin MIDI cable to connect an instrument with MIDI OUT.

3 DMX OUT1: DMX output port, connect the device with DMX IN port through 3Pin XLR cable.

4 DMX OUT2: DMX output port, connect the device with DMX IN port through 3Pin XLR cable.

5 Display Screen: OLED display screen, showing the working status of MTD-1024.

6 Knob: Knob with button function, through rotation and click, configure the working of MTD-1024.

3. Product Parameters

Name	Description
Model	MTD-1024
Size (L x W x H)	88*79*52mm
Weight	180g
Supply Voltage	5VDC
Supply Current	
USB MIDI Compatibility	Standard USB MIDI device, compliant with USB class, plug and play.
MIDI IN Compatibility	Built-in high-speed optical isolator, compatible with all MIDI five-pin output interfaces.
DMX Channel	Support 1024 channel configuration, each DMX output port has 512 channels. DMX OUT1: 1~512 DMX OUT2: 513~1024.

4. Steps for usage

4.1. Power supply

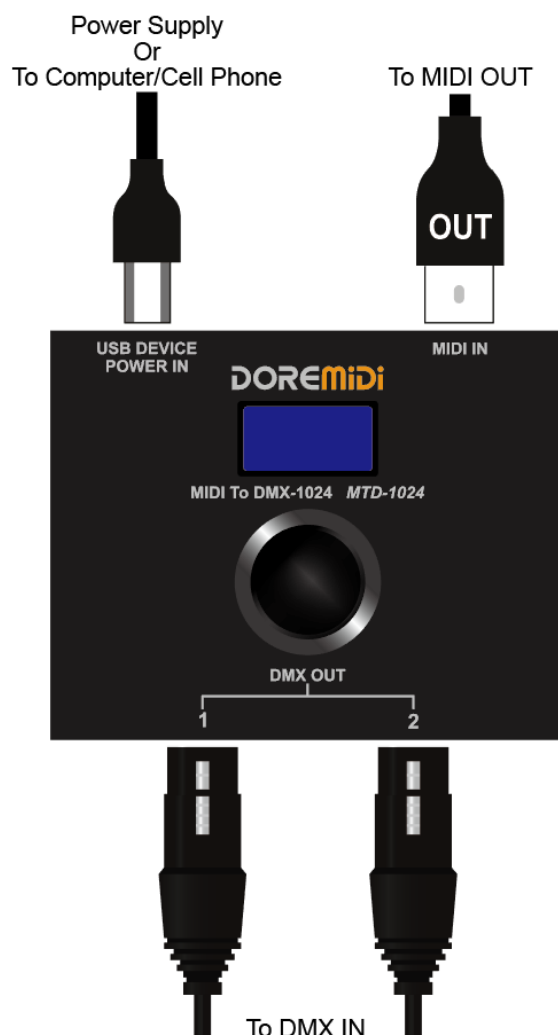
- Supply power to the product through the USB port, support 5VDC/1A power supply input.

4.2. Connect

- Connect MIDI five-pin instrument: Connect the MIDI IN of the product to the MIDI OUT of the instrument through a MIDI five-pin cable.
- Connect to computer/mobile phone: If playing MIDI messages via software, it can be connected to a computer/mobile phone via USB.

(Note: The mobile phone needs to have OTG function, and different mobile phone interfaces need to be connected through an OTG converter.)

- Connect DMX device: Connect DMX OUT1 and DMX OUT2 to the input port of DMX devices through 3Pin XLR cable.




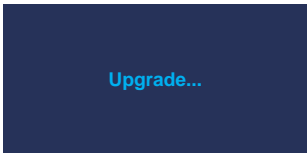
4.3. Configure MIDI to DMX

- Click the knob to select SN / DMX / Sta / Ctl / CH / En, and rotate the knob to set the parameters. After setting, the value 0~127 of the received MIDI message will output the value 0~255 corresponding to the DMX channel, that is, DMX value = MIDI value x 2. As shown in the table:

SN	DMX	Sta	Ctl	CH	En
1	2	Note	0	All	0
2					
3					

Display	Name	Description
SN	Serial Number	Display and configure the parameters of the current serial number. Parameter range: 1~1024.(Note: A new serial number will only be added after the existing serial number has been configured.)
DMX	DMX Channel	Configure the DMX channel. Parameter range: 1~1024. DMX OUT1: 1~512 DMX OUT2: 513~1024.
Sta	MIDI Status	Configure the MIDI status byte. Parameter range: Note/AT/CC. Note: MIDI Notes. CC: MIDI Continuous Controller. AT: MIDI After Touch.
Ctl	MIDI Controller/Note Number	Configure MIDI controller/note numbers. Parameter range: 0~127. When Sta = Note/AT, Ctl is the note number. When Sta = CC, Ctl is the controller number.
CH	MIDI Channel	Configure MIDI channels for MIDI messages. Parameter range: All, 1~16, default All. All: Respond to messages from all MIDI channels.
En	Enable switch	Configure to enable the parameters of this serial number. 1: enable. 0: disable enable.

● Other operations

Name	Description
Delete One Configuration	Select a serial number, press and hold the knob for 2 seconds, and the configuration content of the serial number will be cleared.
Clear All Configuration	Select the last blank serial number, press and hold the knob for 2 seconds. Enter the factory reset. Then select "Yes". 
Enter Firmware Upgrade	Press and hold the knob, then power on the product, the product will enter the upgrade mode. (Note: Please pay attention to the official website notification, if there is a firmware update.) 

4.4. Upload/download configuration parameters

Users can configure MIDI to DMX parameters according to different application scenarios. And save the configured parameters as a file for quick configuration next time.

- **Preparation**

Operating environment: Windows7 or above system.

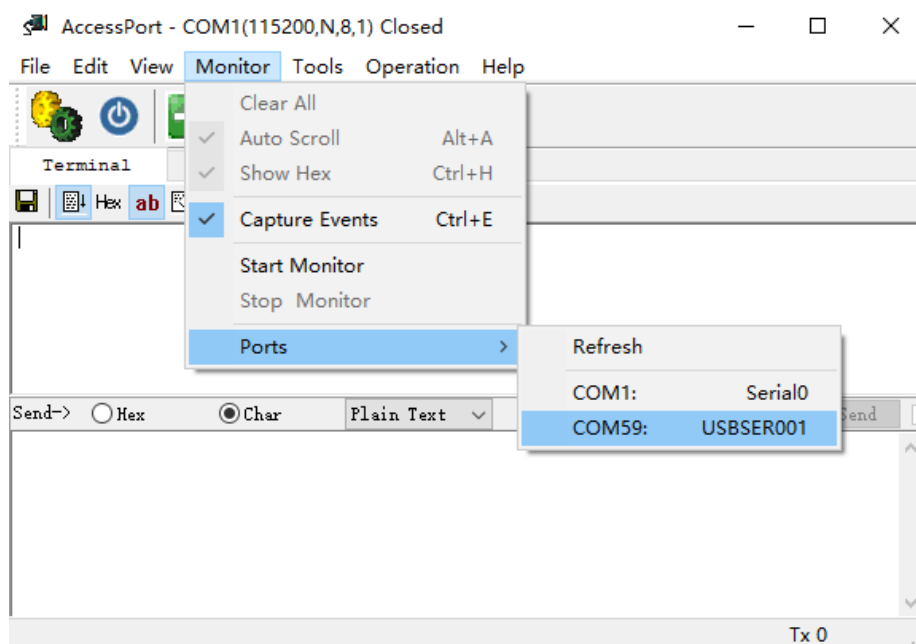
Software: Download the "AccessPort.exe" software. (Download from www.doremidi.cn)

Connection: Connect the USB Device port of MTD-1024 to the computer.

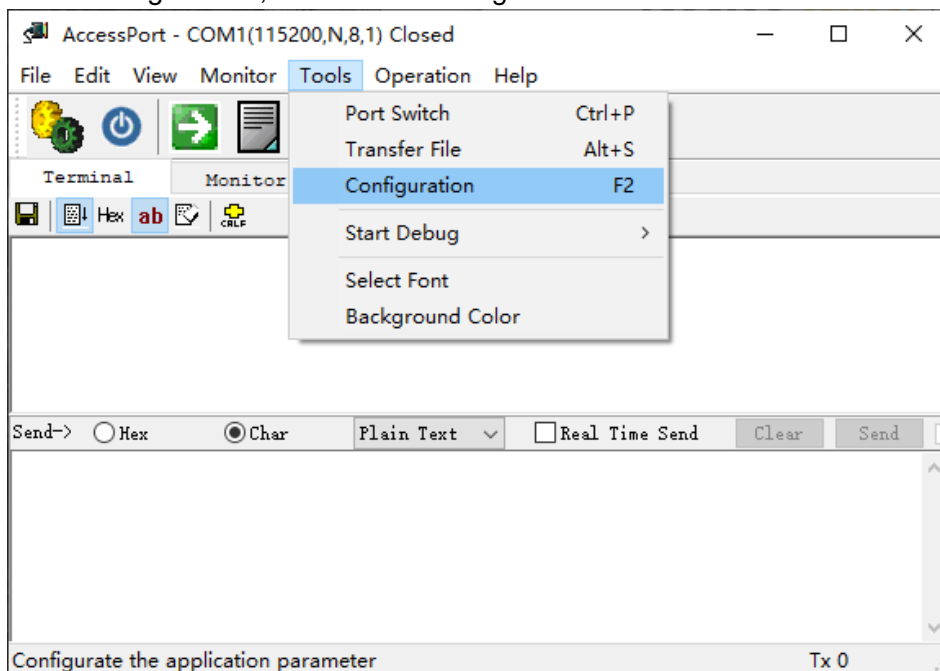
- **Configuring the COM port**

Open the "AccessPort.exe" software, select "Monitor→Ports→COMxx", as shown in the figure:

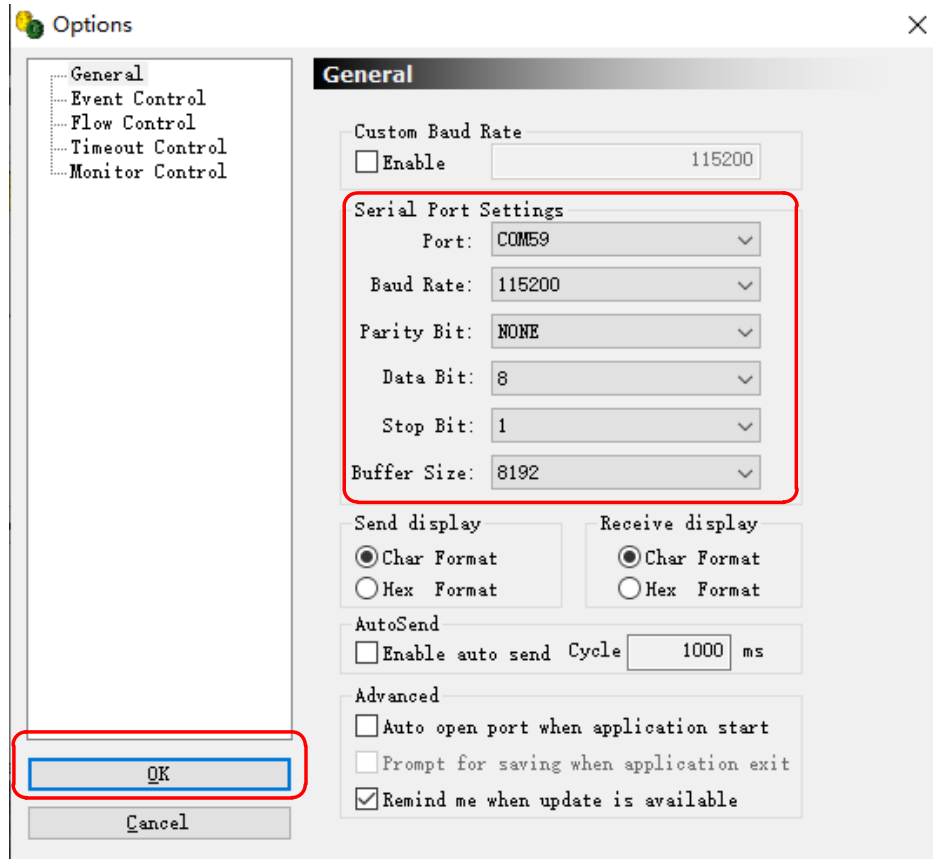
(Note: The COM names of different computers are different, please choose according to the actual situation.)



Select "Tools→Configuration", as shown in the figure:

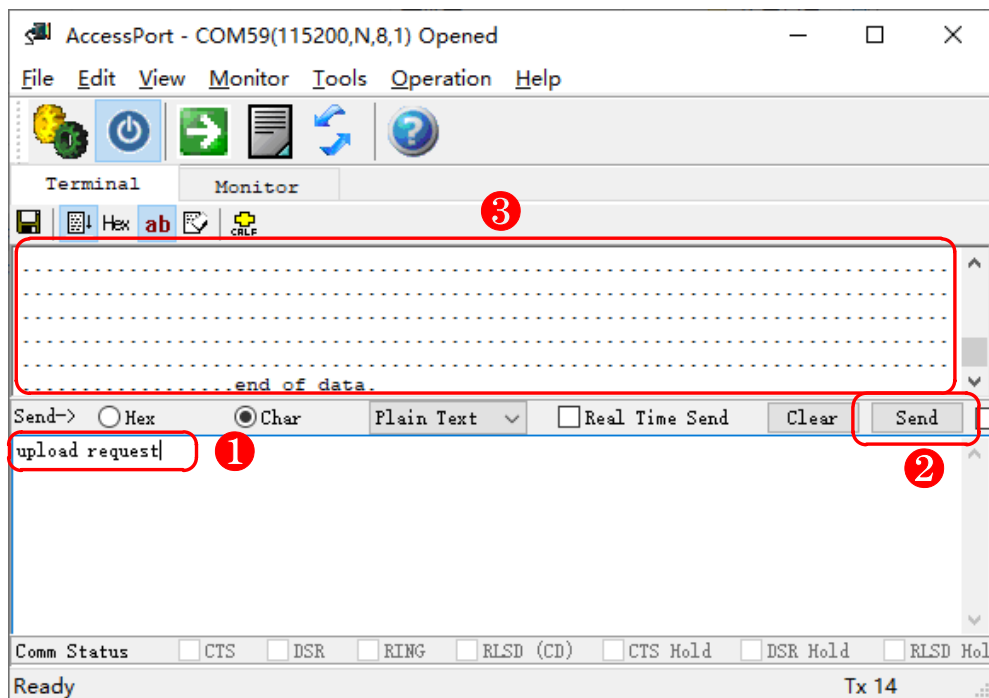


Select "General", configure COM port parameters and click "OK", as shown in the figure:

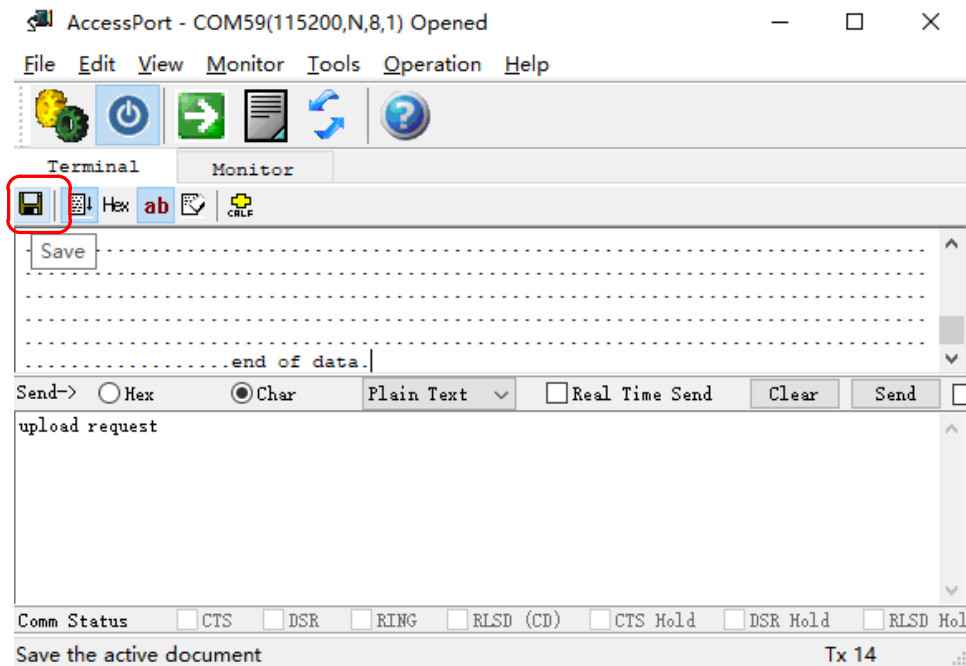


- **Upload configuration parameters**

Enter "upload request" in the software, click "Send", and you will receive "...end of data." as shown in the figure:

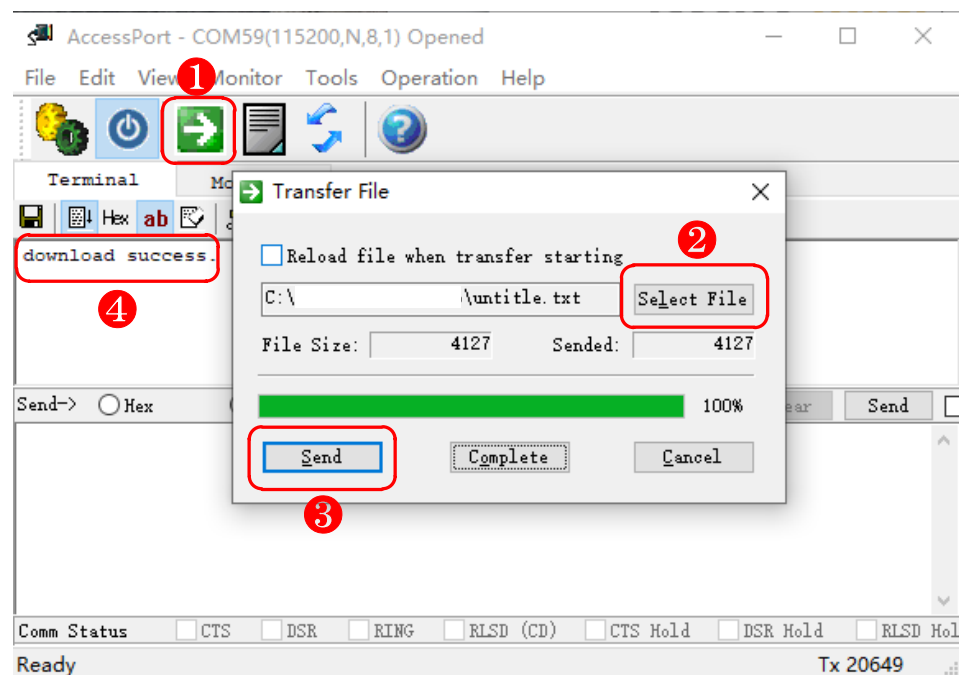


Click "Save" to save the data as a .txt file, as shown in the figure:



- **Download configuration parameters**

Select "Transfer File→Select File→Send", and receive "download success." after sending successfully, as shown in the figure:



5. Precautions

- 1) This product contains a circuit board.
- 2) Rain or immersion in water will cause the product to malfunction.
- 3) Do not heat, press, or damage internal components.
- 4) Non-professional maintenance personnel shall not disassemble the product.
- 5) If the product is disassembled or damaged by improper use, the warranty is not available.

6. Questions & Answers

- 1) Question: The USB Device port cannot connect to the phone.

Answer: Please confirm whether the mobile phone has the OTG function first, and it has been turned on.

- 2) Question: The USB Device port cannot be connected to the computer.

Answer:

- After confirming the connection, whether the screen displays "USB Connected".
 - Confirm whether the computer has a MIDI driver. Generally speaking, the computer comes with a MIDI driver. If you find that the computer does not have a MIDI driver, you need to install the MIDI driver. The installation method: <https://windowsreport.com/install-midi-drivers-pc/>
- 3) Question: MIDI IN does not work properly
Answer: Make sure the "MIDI IN" port of the product is connected to the "MIDI OUT" port of the instrument.
 - 4) Question: "AccessPort.exe" software cannot find the COM port.
Answer:
 - Please confirm that the USB Device port of MTD-1024 has been connected to the computer, and MTD-1024 has been powered.
 - Please try to connect to another USB port of the computer.
 - Please select another COM port in the "AccessPort.exe" software.
 - Please try to install the USB COM driver. Virtual COM Port Driver V1.5.0.zip

If it cannot be resolved, please contact customer service.

Manufacturer: Shenzhen Huashi Technology Co., Ltd.

Address: Room 910, Jiayu Building, Hongxing Community, Songgang Street, Baoan District, Shenzhen, Guangdong, China

Post Code: 518105

Customer Service Email: info@doremidi.cn