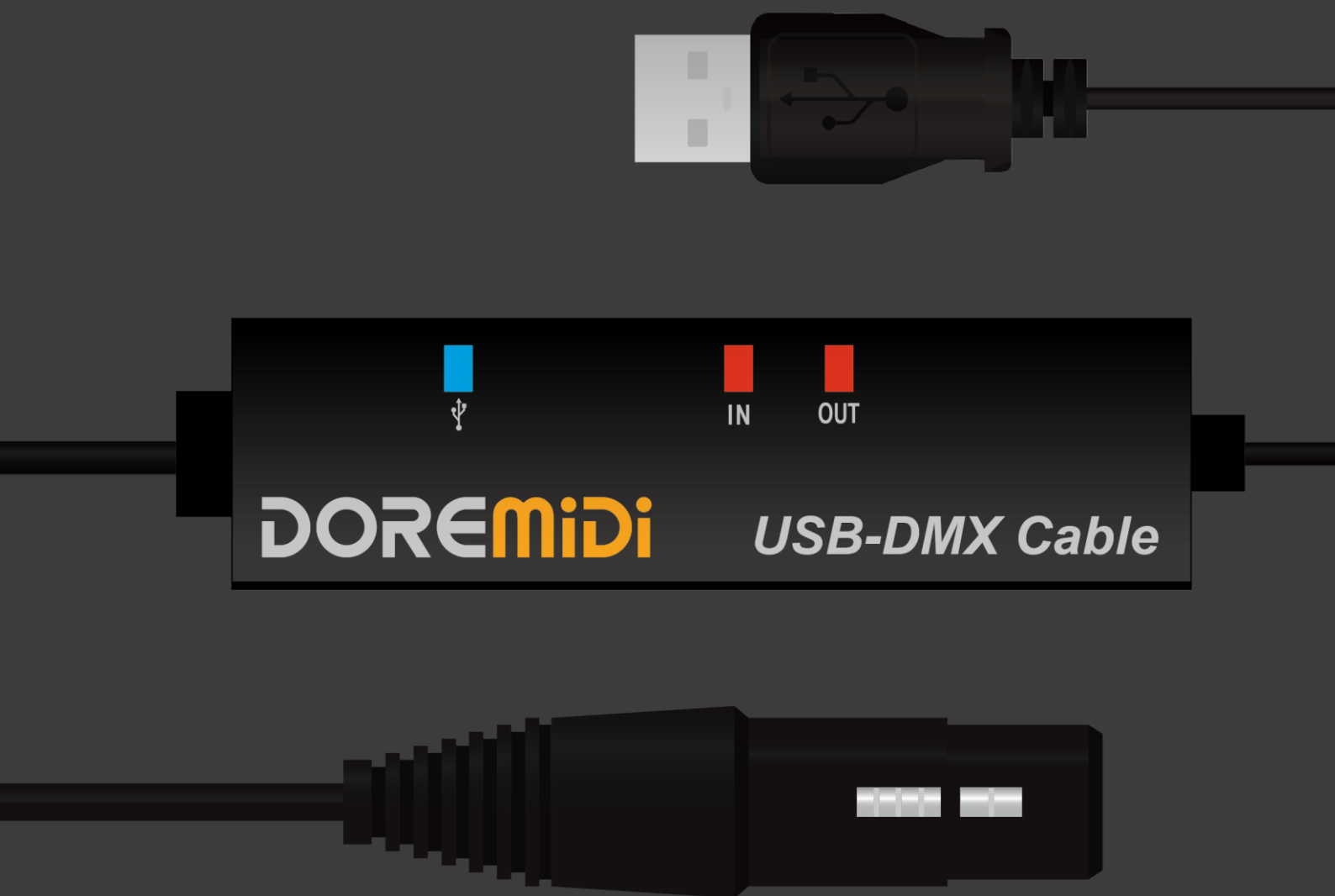


USB TO DMX Cable(UTD-10)

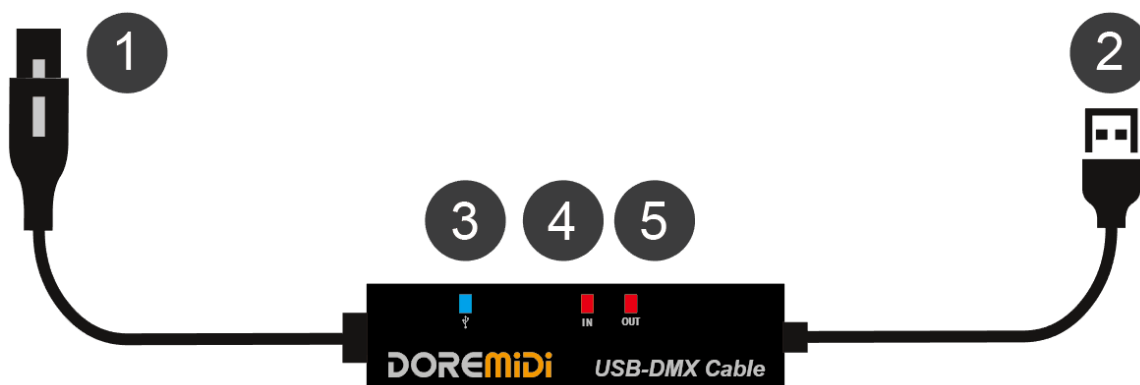


Instructions

1. Introduction

The USB to DMX cable (UTD-10) is a high-quality light control converter designed by DOREMiDi. UTD-10 has DMX and RDM functions, which can convert DMX/RDM to USB and connect to a computer. UTD-10 has a communication indicator, which is convenient for operation and debugging. In addition, UTD-10 has a built-in high-speed isolator that can isolate and protect computers and external light control equipment, and an external magnetic ring shield can improve anti-interference ability.

2. Appearance



- ① XLR plug, connect RDM/DMX equipment.
- ② USB connector, connect to Windows, Mac, Linux and other equipment.
- ③ USB indicator light, after the USB connection, the indicator light is always on.
- ④ IN indicator, RDM input indicator, flashes after receiving data from RDM equipment.
- ⑤ OUT indicator, DMX output indicator, flashes after sending DMX data output.

3. Product Parameters

Name	Description
Model	UTD-10
Length	2 meters
Weight	100g
USB Plug	USB2.0 standard full-speed USB-MIDI plug
XLR plug	Standard three-pin XLR plug
Indicator Light	USB work indicator, RDM input/DMX output indicator
Compatible System	Windows, Mac, Linux, etc.

4. Steps for usage

1. Connection: Connect the USB-A plug of UTD-10 to the PC, and the XLR plug to the RDM/DMX device.
2. Install the driver: Generally, Win8/Win10 will automatically discover the USB-DMX device. If it is not found, you need to install the driver manually.

Driver download link: <https://ftdichip.com/drivers/vcp-drivers/>

Select the driver to download according to the system situation, as shown in the figure for part of the driver:

		Processor Architecture							Comments
Operating System	Release Date	X86 (32-Bit)	X64 (64-Bit)	PPC	ARM	MIPSII	MIPSIV	SH4	
Windows*	2017-08-30	2.12.28	2.12.28	-	-	-	-	-	WHQL Certified. Includes VCP and D2XX. Available as a setup executable . Please read the Release Notes and Installation Guides .
Linux	-	-	=	-	-	-	-	-	All FTDI devices now supported in Ubuntu 11.10, kernel 3.0.0-19. Refer to TN-101 if you need a custom VCP VID/PID in Linux. VCP drivers are integrated into the kernel .
Mac OS X 10.3 to 10.8	2012-08-10	2.2.18	2.2.18	2.2.18	-	-	-	-	Refer to TN-105 if you need a custom VCP VID/PID in MAC OS
Mac OS X 10.9 and above	2019-12-24	-	2.4.4	-	-	-	-	-	This driver is signed by Apple
Windows CE 4.2-5.2**	2012-01-06	1.1.0.20	-	-	1.1.0.20	1.1.0.10	1.1.0.10	1.1.0.10	
Windows CE 6.0/7.0	2016-11-03	1.1.0.22 CE 6.0.CAT CE 7.0.CAT	-	-	1.1.0.22 CE 6.0.CAT CE 7.0.CAT	1.1.0.10	1.1.0.10	1.1.0.10	For use of the CAT files supplied for ARM and x86 builds refer to AN_319
Windows CE 2013	2015-03-06	1.0.0	-	-	1.0.0	-	-	-	VCP Driver Support for WinCE2013

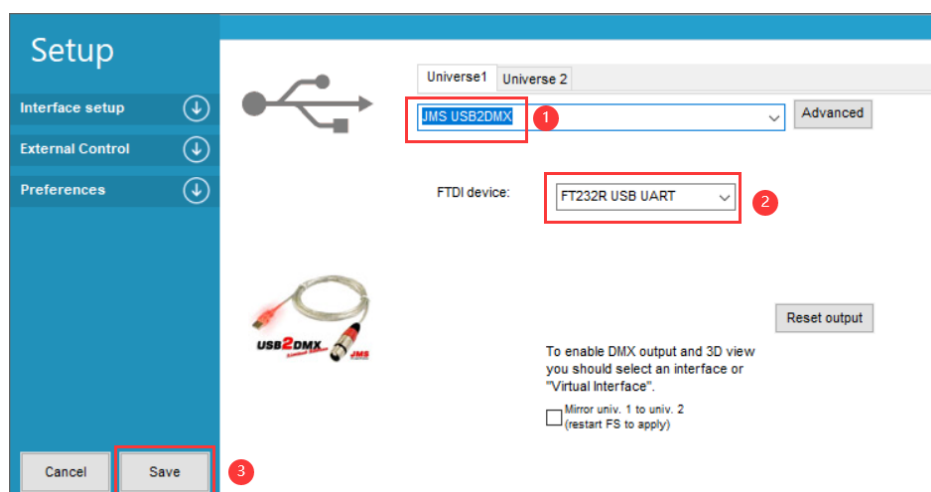
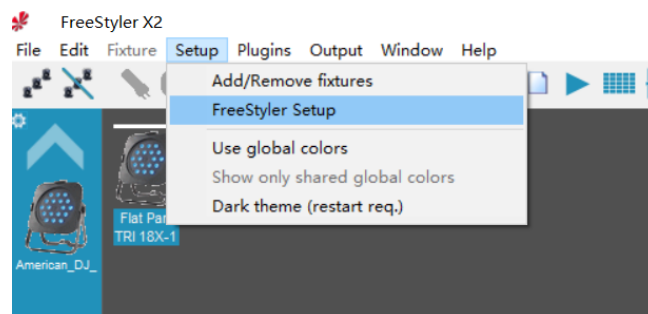
3. Software settings: Take FreeStyle X2 as an example

- Install FreeStyle X2 software:

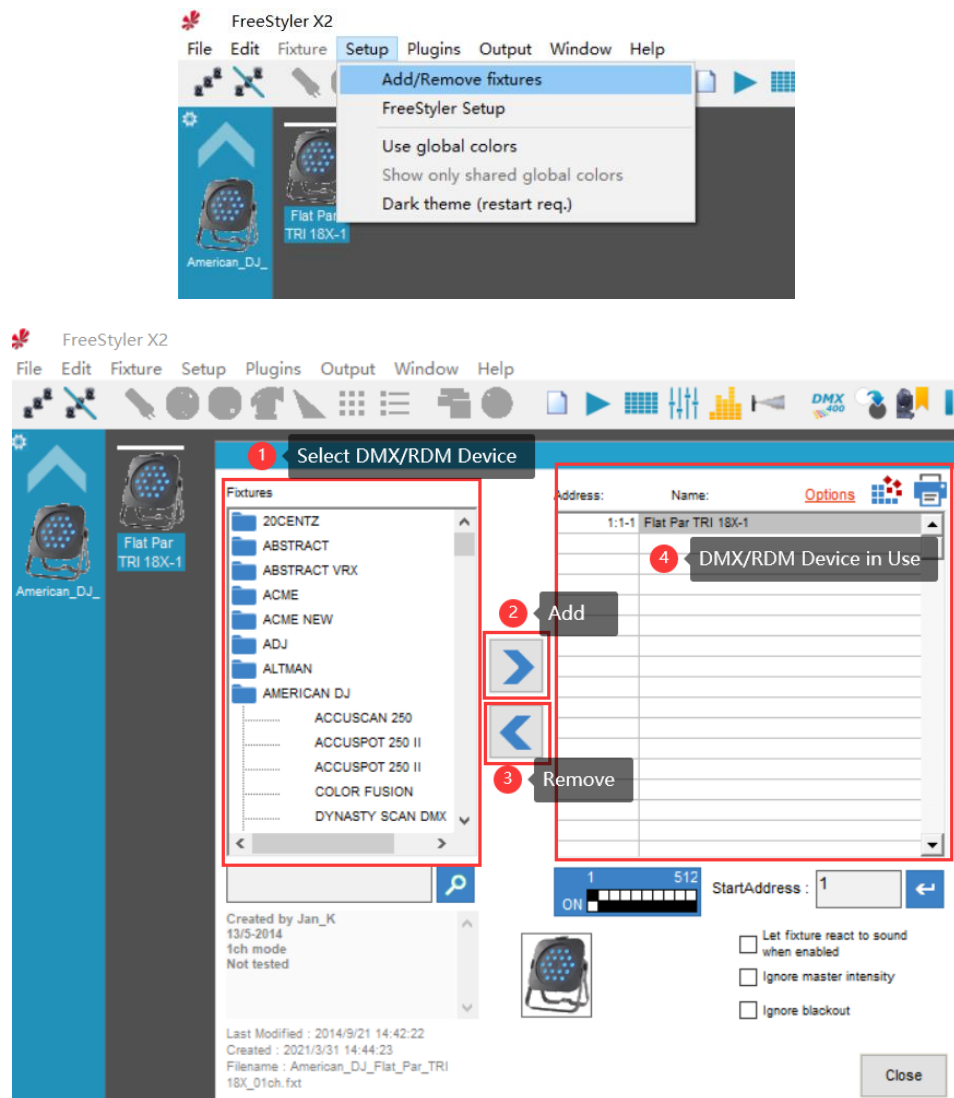
FreeStyle software download link: www.freestylerrdmx.be

- Set FreeStyle to connect to UTD-10:

Open "Setup→FreeStyle Setup", select "JMS USB2DMX" and "FT232R USB UART", and then select "Save" to save the settings.



- Add/remove DMX/RDM equipment:
Open "Setup→Add/Remove fixtures" and add/remove RDM/DMX devices according to the picture.



5. Precautions

1. This product contains a circuit board
2. Rain or immersion in water may cause the product to malfunction
3. Do not heat, press, or damage internal components
4. Non-professional maintenance personnel are not allowed to disassemble the product
5. The working voltage of the product is 5VDC, using a voltage lower or exceeding this voltage may cause the product to fail to work or be damaged

6. Q&A

Question: Recognized after connecting to a computer.

Answer: Please make sure that the computer has been correctly installed the driver, the driver link:
<https://ftdichip.com/drivers/vcp-drivers/>

Question: After connecting to the DMX lamp, the lamp cannot be controlled normally.

Answer: Please make sure that the DMX channel that occurs is consistent with the lamp.

Question: After opening the software, the interface fails to open, or the software does not recognize the UTD-10 cable.

Answer: Re-plug the UTD-10 cable, or use another USB interface, or restart the application software.

If the problem is not resolved, please contact customer service.

Manufacturer: China Show (Shenzhen) Technology Co., Ltd.

Address: Room 9A, 9th Floor, Kechuang Building, Quanzhi Science and Technology Innovation Park,
Shajing Street, Baoan District, Shenzhen, Guangdong Province

Customer Service Email: info@doremidi.cn