

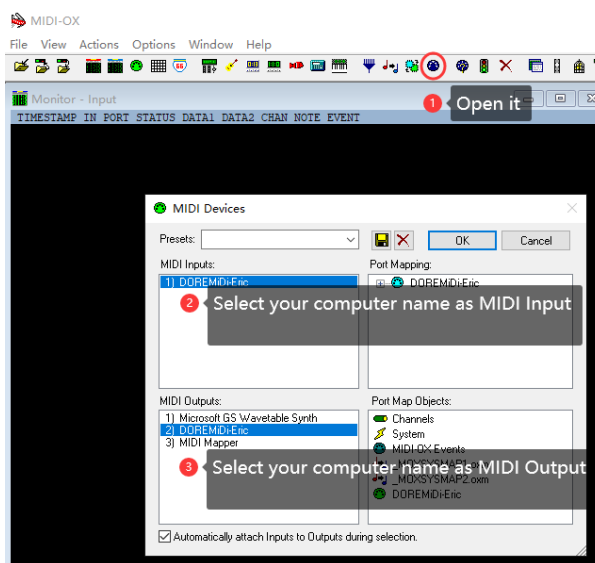
About

Through this document, users can set the IP address of MR-1 Pro/UR-1 Pro by themselves. When the IP address is not set, the product uses the method of automatically obtaining the IP address by default. After the IP address is set, the product will use the set IP address for networking. Take MR-1 Pro as an example.

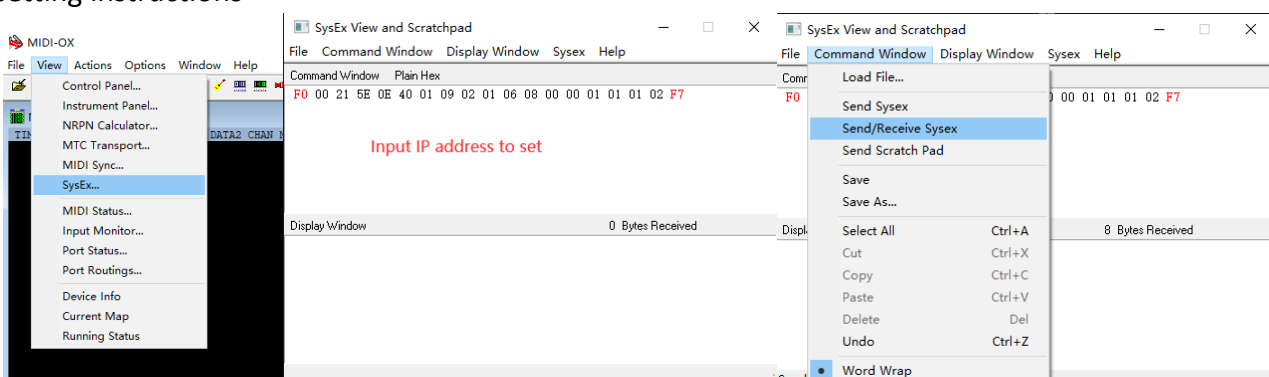
Upgrade system requirements: Windows 7 or newer version of Windows system, The computer and the product to be upgraded need to be connected to the same local area network.

Step 1: Refer to "DOREMiDi Network MIDI Config Instructions V1.0" to connect DOREMiDi's RTP MIDI device to the LAN.

Step 2: Use MIDI-OX software to configure MIDI Output and MIDI Input.

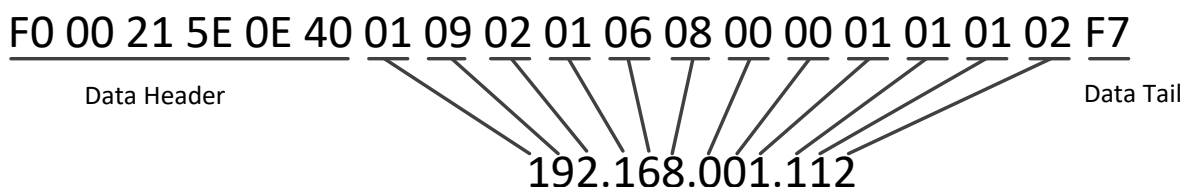


Step 3: Use to open "SysEx..."→input IP setting instructions→click "Send/Receive Syses" to send setting instructions

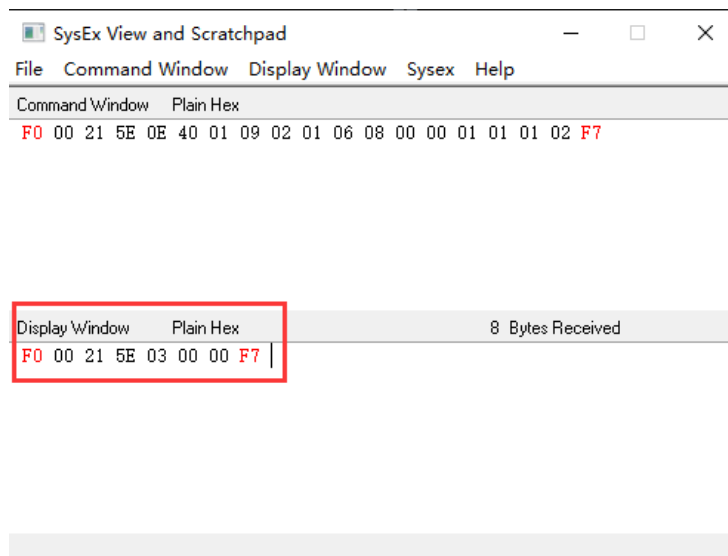


Set the IP command data format:

The data header and the data tail are fixed, and the data area is the IP address. For example, set the IP address to "192.168.1.112", as shown in the figure:



After the setting is successful, you will receive a feedback message, as shown in the figure:



Reset:

If you forget the IP address set by the product, you need to press and hold the product button for more than 10 seconds until the red light and blue light flash alternately, indicating that the factory settings have been restored successfully.

