

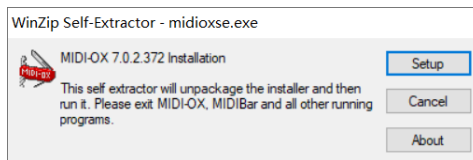
About

Through this document, users can upgrade the MIDI HUB-3 box by themselves. When DOREMiDi has a new firmware, it will be announced on the official website. Follow the official latest news:

<http://www.doremidi.cn/pd.jsp?id=13>

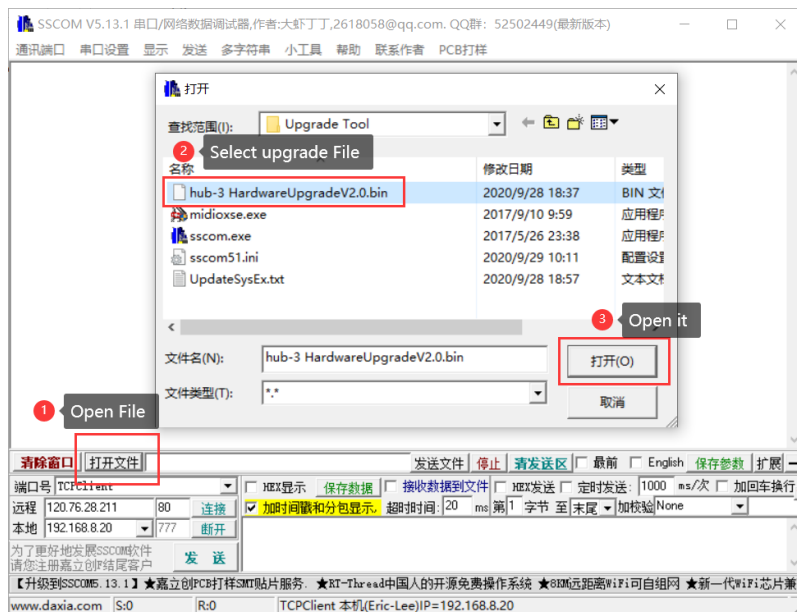
Step 1: Install the firmware upgrade tool:

- Installation environment: Windows 7 or newer version of Windows system (Preferably Win10).
- Double-click “midioxse.exe” software to install.

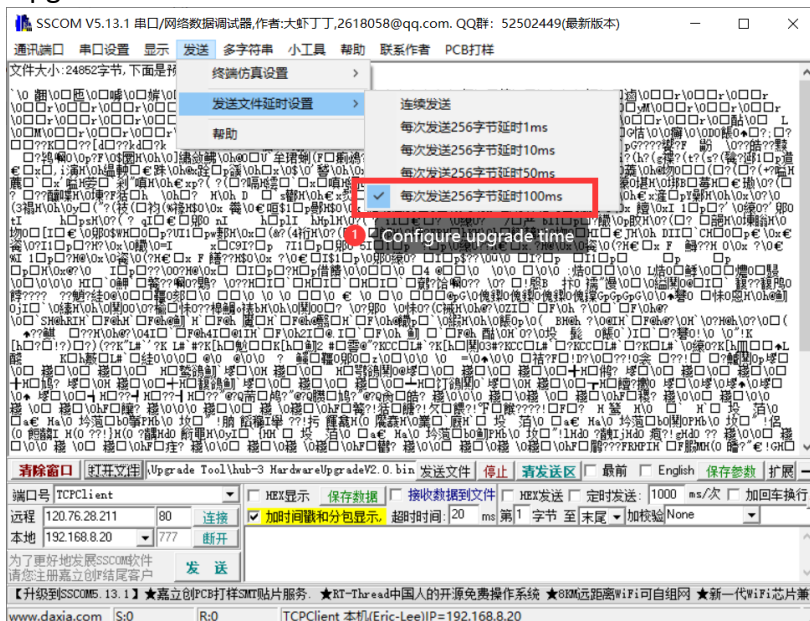


Step 2: Configure the upgrade file (Prepare for the step 5)

- Open the “sscom.exe” software and select the upgrade file



- Configure the upgrade time:

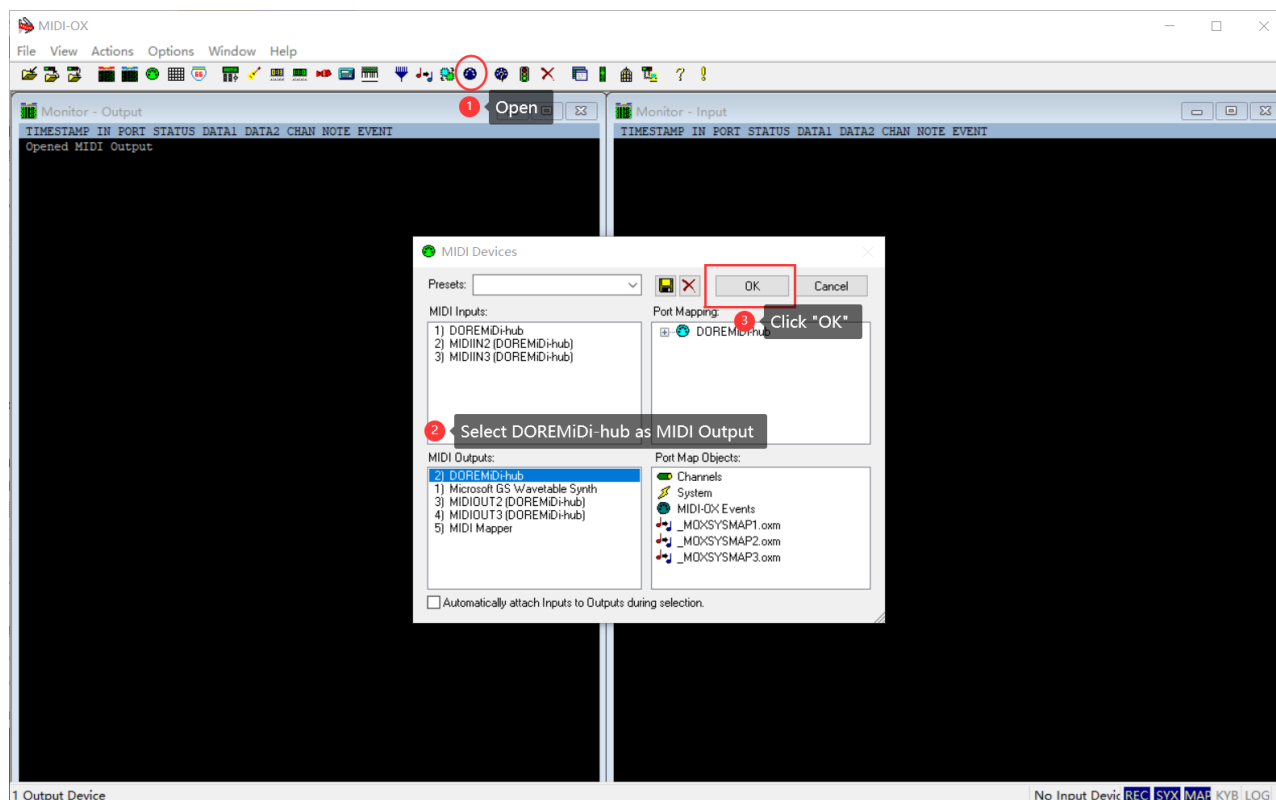


Step 3: Connect HUB-3 with MIDI OX software:

- Connect MIDI HUB-3 to the computer via the USB TO HOST interface:

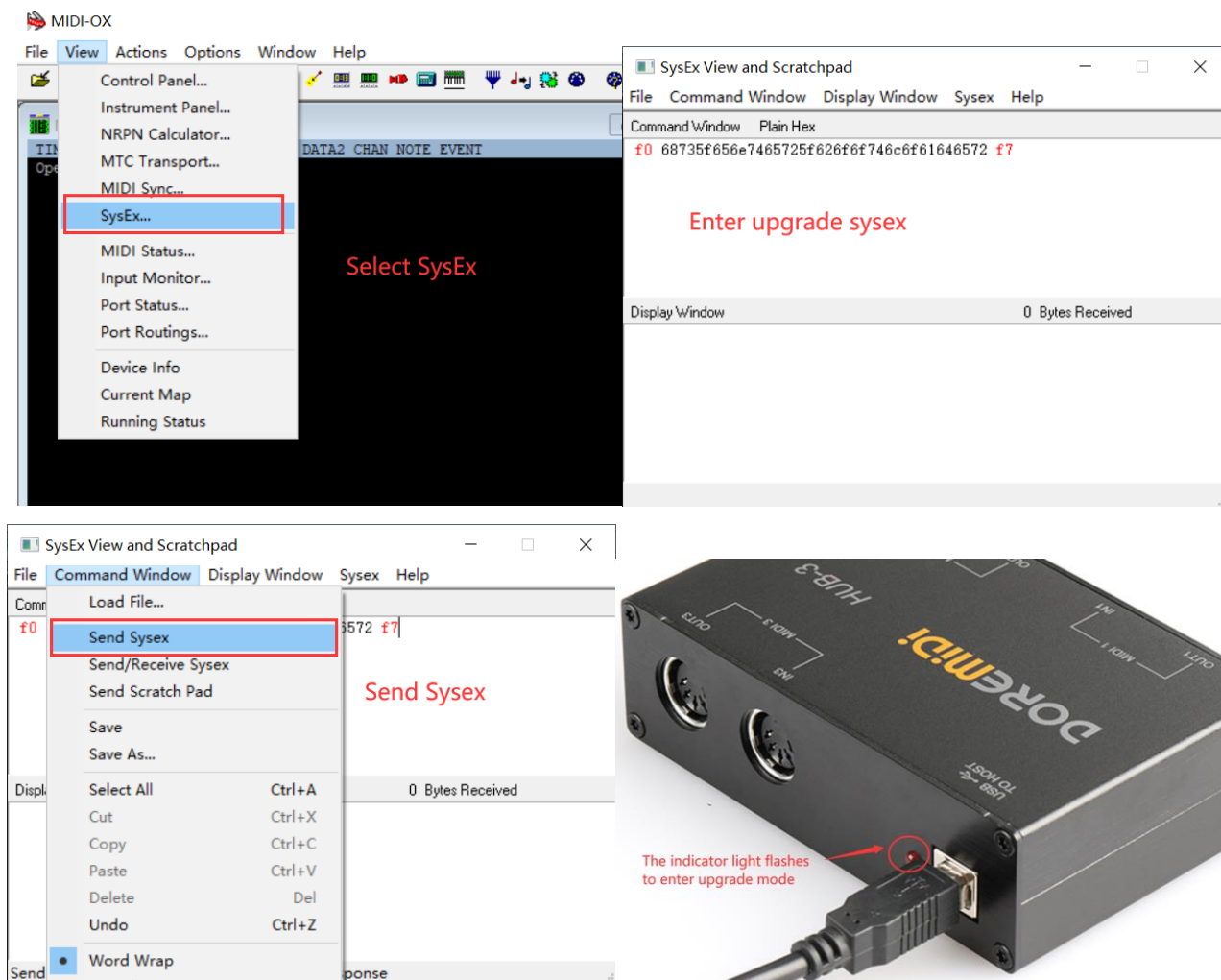


- Reopen the MIDI OX software and select "DOREMiDi-hub" as the MIDI Output:



Step 4: Send upgrade instructions

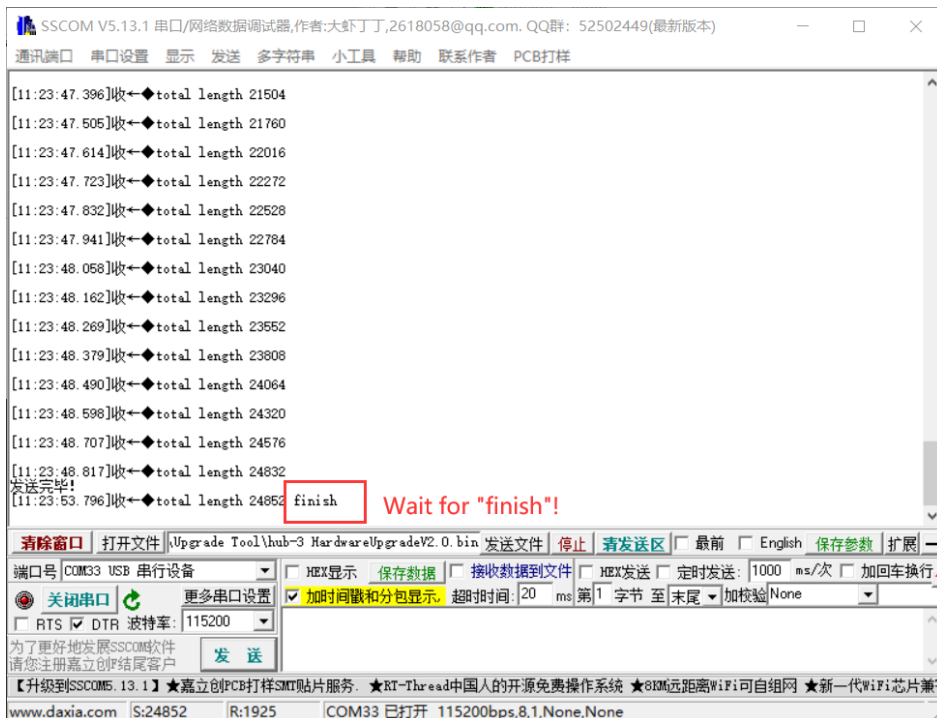
- Enter the upgrade command in SysEx: "f0 68735f656e7465725f626f6f746c6f61646572 f7"
- After entering the upgrade mode, the USB indicator will flash.



(Note: After entering the upgrade mode, there is a 30s upgrade operation time. After 30s, HUB-3 will exit the upgrade mode, so enter the step 5 as soon as possible.)

Step 5: Send the upgrade file

- Switch to the sscom.exe software, select and open the serial device, click Send File



(Note: You must wait until the "finish" is received. After the upgrade is successful, the USB indicator will be steady on, indicating that the upgrade is successful.)

Finally, reconnect the HUB-3 box to the computer and the upgrade is complete!

Q:Can the upgrade tool be used on Macbook?

A:No, the upgrade tool can only be used under Windows. It is recommended to use common versions such as Windows10.

Q:What if the upgrade time is exceeded?

A:Need to start from step 3 and re-operate.

Q:How to judge whether the upgrade mode is successful or not?

A:During the upgrade mode, the USB indicator light will flash, and when the upgrade mode is exited or the upgrade is successful, the USB indicator light will stay on.

Q:The USB indicator of HUB-3 keeps flashing, and the product cannot work.

A:The product upgrade operation failed, please start with the second step and try again.