

门控五金解决方案
Door Controls Hardware Solutions

www.hsklock.com



www.houselock.com.cn

More products ▼



HSK[®]
PROJECT FIRE DOOR HARDWARE



北京HSK公司，始创于2002年。主要从事中、高端建筑五金锁产品的研发、生产和销售。公司具有技术创新及产品研发能力。我们拥有自主知识产权专利。我们以先进的设计、制造和管理理念，秉承国际、国内标准研发生产和销售高品质的建筑五金产品。HSK依托北京优越的人才资源和河北良好的生产环境，通过投资、控股、战略合作等方式，与多家五金制造工厂合作形成了强大的系统产业链条。我们将以全新的经营理念、管理理念和技术理念，致力于生产世界一流的产品！

Beijing HSK was set up in 2002. It mainly engaged in the research and manufacture of middling or high-end mortise lock and also its promotion and sale. HSK team members are experts in lock body technology. Furthermore, We are a manufacturing plant with the capability of technological innovation. Cooperate with us, you will get continuous technical support and consistent quality assurance! We also would like to cooperate with Hardware Trading Company in ODM production and the development of all kinds of mortise locks in conformity with international standards. The superior human resource in Beijing and the sound producing environment in Hebei, HSK has already formed a powerful industry chain with several hardware manufacturers by the means of investment, holding shares and strategic cooperation. And also depending on the new concepts in operation, management and technology, HSK will devote itself to producing the quality products over the world!



工程项目用门控防火五金系统

PROJECT FIRE DOOR HARDWARE

操作 (Operating)

尼龙把手 Antibacterial nylon handle
不锈钢把手 stainless steel handle



保安 (Securing)

插芯锁 mortise lock
窄型材门插芯锁 narrow stile mortise lock
锁芯 cylinder



悬挂 (Hanging)

合页 hinge



控制 (Controlling)

闭门器 door closer
顺位器 coordinator



保护 (Protection)

门顶 door stopper



定位 (Restriction)

门插 flush bolt

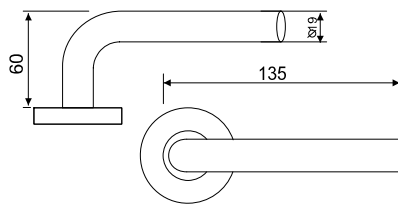


欧标不锈钢把手说明

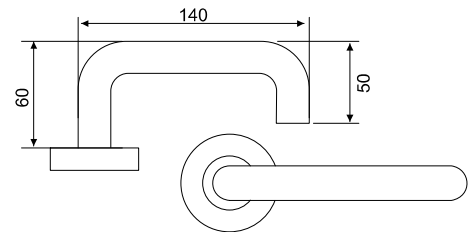
- 把手均为SUS304不锈钢制作
- 护盖底座均不锈钢冲压
- 把手开启次数达到欧盟EN3-4级 锁开启200,000次
- 表面处理：不锈钢拉丝 PVD金 枪灰 黑色

Specification

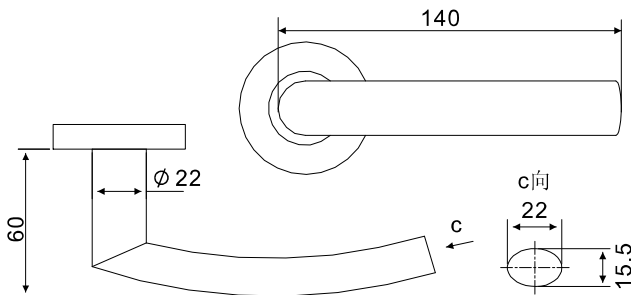
- Material: stainless steel 304
- Inner rose and inner escutcheons are made by stainless steel
- Cycle test 200,000, compliance to EN 1906
- Finish: SS pvd-gold gray black



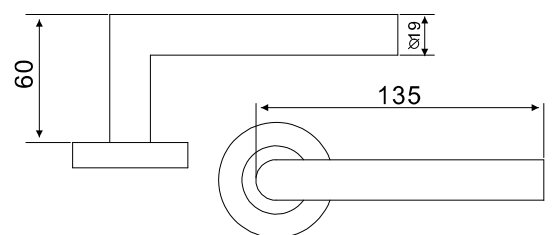
H10001



H10003



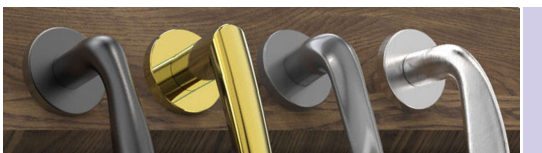
H10002



H10004

Classification EN 1906

| | | | | | | | |
|---|---|---|---|---|---|---|---|
| 4 | 7 | - | 1 | 1 | 4 | 0 | B |
|---|---|---|---|---|---|---|---|



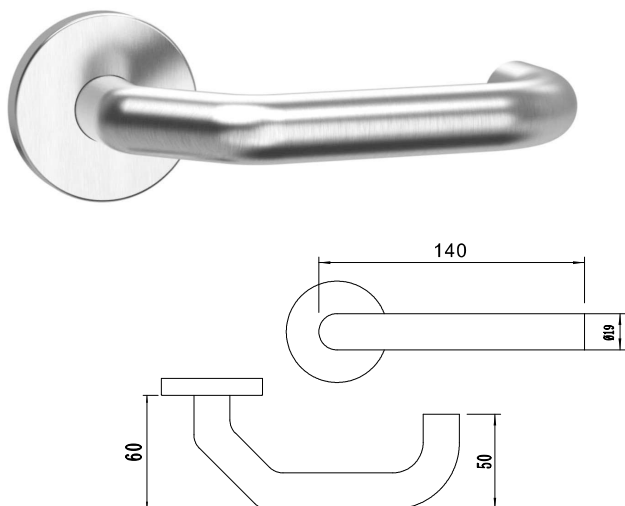
更多款式：不锈钢防火把手系列图册
MORE PRODUCT-EN FIRE PROOF HANDLE CATALOGUE

欧标不锈钢把手说明

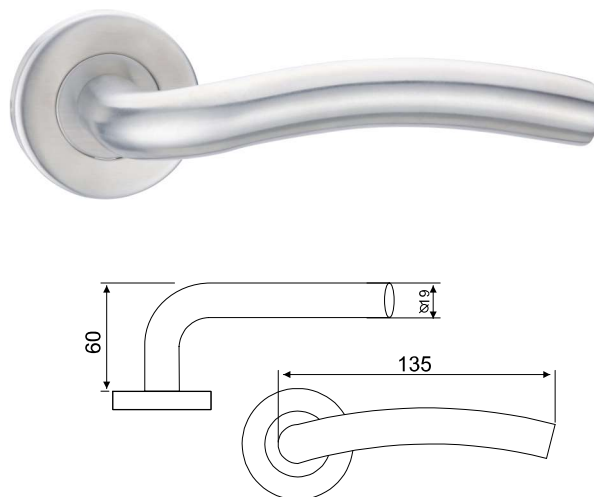
- 把手均为SUS304不锈钢制作
- 护盖底座均不锈钢冲压
- 把手开启次数达到欧盟EN3-4级 锁开启200,000次
- 表面处理：不锈钢拉丝 PVD金 枪灰 黑色

Specification

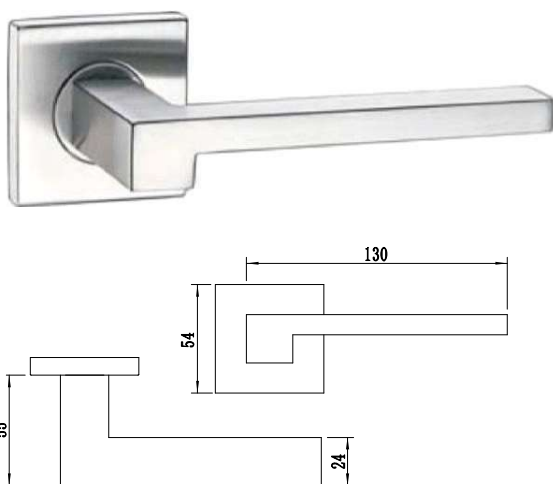
- Material:stainless steel 304
- Inner rose and inner escutcheons are made by stainless steel
- Cycle test 200,000,compliance to EN 1906
- Finish: SS pvd-gold gray black



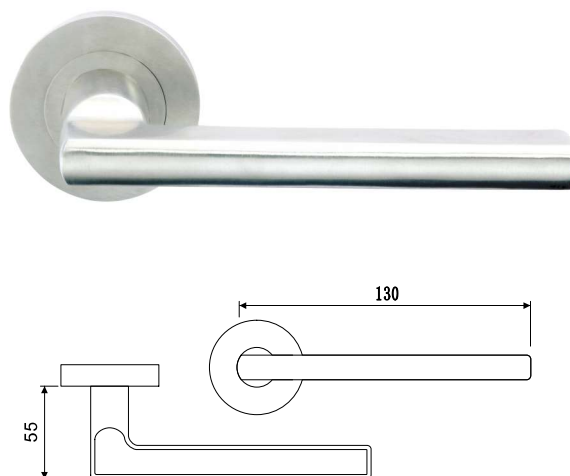
H10015



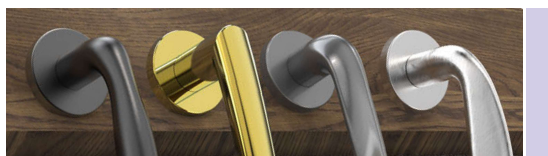
H10016



H10432



H10054



Classification EN 1906

| | | | | | | | |
|---|---|---|---|---|---|---|---|
| 4 | 7 | - | 1 | 1 | 4 | 0 | B |
|---|---|---|---|---|---|---|---|

更多款式：不锈钢防火把手系列图册

**MORE PRODUCT-EN FIRE PROOF HANDLE
CATALOGUE**

欧标抗菌尼龙把手说明:

- 通过EN 1906标准检测, 200,000次循环测试
- 通过DIN 18257/DIN 18273防火标准检测
- 是用于公共建筑等高频使用环境
- 高度耐腐蚀性
- 复位弹簧结构

Nylon Handles Specification

- Conform to EN 1906, 200,000 test cycles.
- Tested acc. to DIN 18257/DIN 18273 (fire-rated version)
- High frequency of use for public building
- High corrosion resistance
- With sliding bearing technology

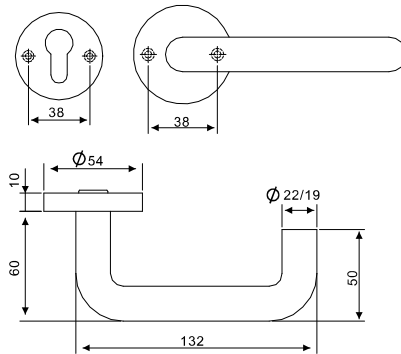


HSK 尼龙把手具有独特的工业风格, 绚丽的自然色彩和极强的适应性, 可用于不同材质, 不同颜色的门!

HSK nylon products have its own characteristic, They can be used in different material and different



H70003-Black



内部钢衬
Steel lining



H70003-Black

磨砂 Rough surface



亮光 Smooth surface

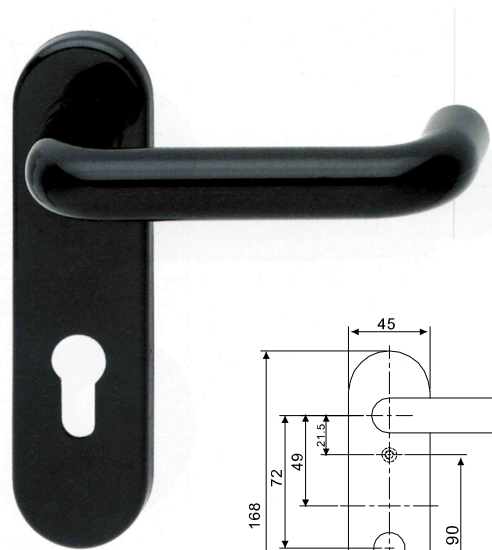


H70203-Blue

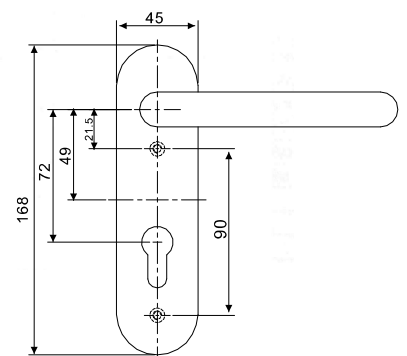
标准颜色 Standard colour



White Black Blue Yellow Red



H70203-Black



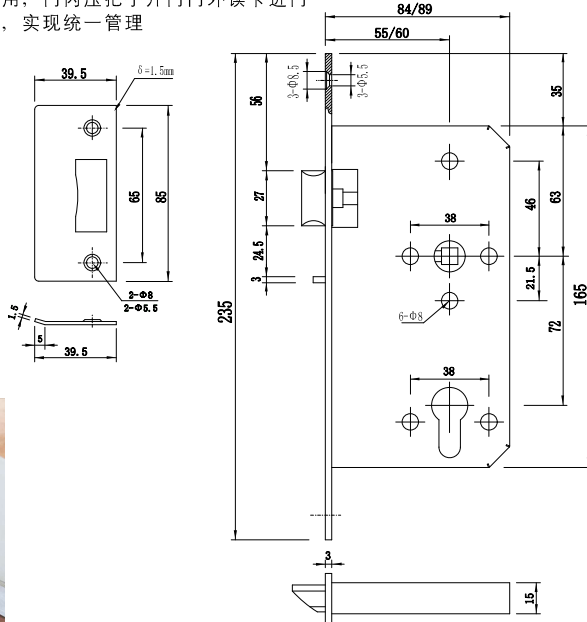
H72NF Series

功能说明

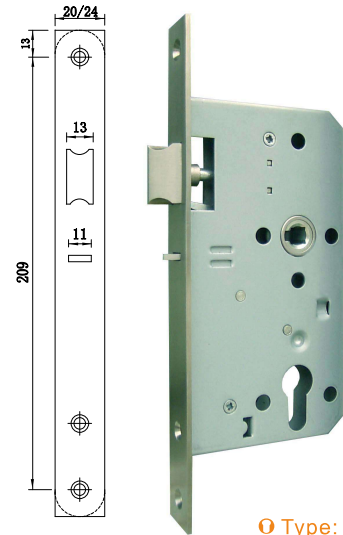
储藏室门：门内无锁定，门外钥匙开启

办公室门：与电锁扣配合使用，门内压把手开门门外读卡进门

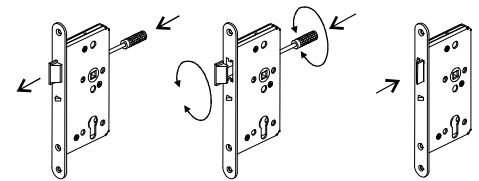
钥匙可纳入总钥匙管理系统，实现统一管理



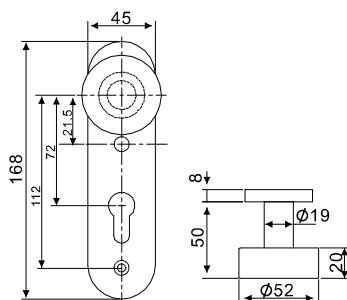
Night-Latch Bolt Lock



○ Type: H5572NF □
H6072NF □



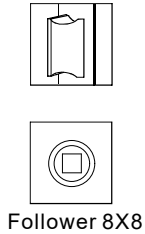
① Reverse left/right hand



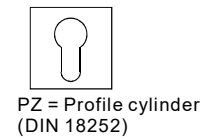
Night Latch Function

- ① Lockcase: 1 latch bolt plus 1 guard latch, no deadbolt.
- ① Outside trim: Dummy handle or no handle, single cylinder.
- ① Inside trim: Lever handle only, no cylinder, no turn.
- ① Lock and unlock: Door can be unlocked with key. Once the door is closed, the latch bolt is locked by the guard latch.
- ① Get in: First turn with key withdraws the latch bolt and door can be opened then.
- ① Exit: One can leave by turning the inside lever.

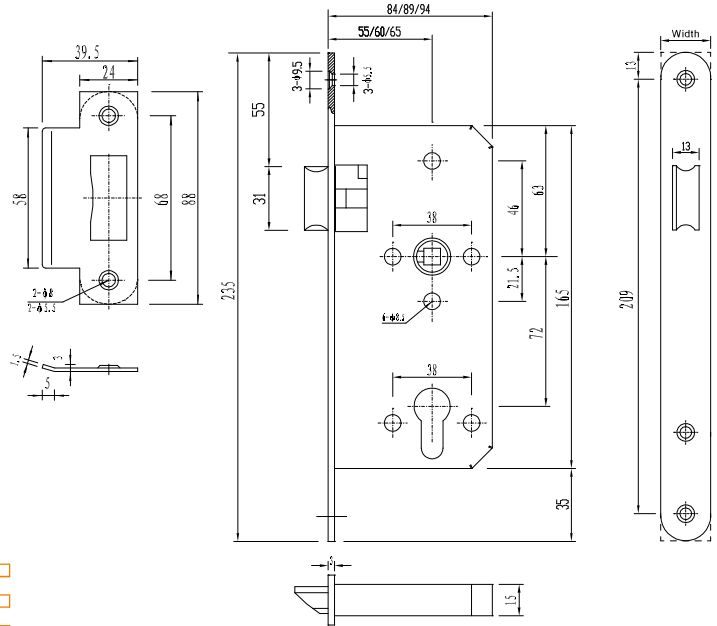
Night-Latch Bolt Lock



Follower 8X8

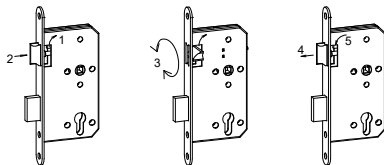


PZ = Profile cylinder
(DIN 18252)



Type

- H5572CN ☐
- H6072CN ☐
- H6572CN ☐



Reverse left/right hand

Technical data

- Follower 8X8mm 9X9mm
- Distance 72mm
- Backset 55mm 60mm 65mm

Forend

- Type round head, square head
- Thickness 3mm
- Width 20, 22, 24mm

Forend finish

- Stainless steel SSS PSS PVD

Accessories

- Striking plate
- Pocket
- Lock and strike plate fixing screws

H72C Series

Classification EN 12209

3 X 9 1 0 G 3 B C 3 0

Features

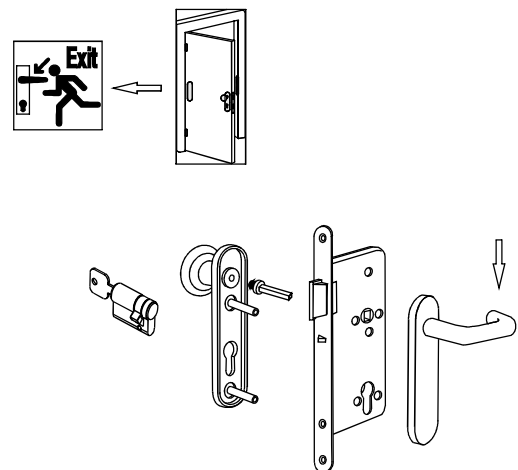
- According to DIN 18.250 class 3
- For wooden or steel doors with CE certificate
Lock case size DIN 18251-1, closed case with sleeves,
- Suitable for external fire or smoke protection doors
- Prepared for profile cylinders
- With key action latch bolt

适用：储藏室、机房、生产线安全门

H72CN

功能说明

储藏室门：门内无锁定，门外钥匙开启
办公室门：与电锁扣配合使用，门内压把手开门门外读卡进门
钥匙可纳入总钥匙管理系统，实现统一管理



H72NF+H10220+H10203 Configuration



Follower 8X8

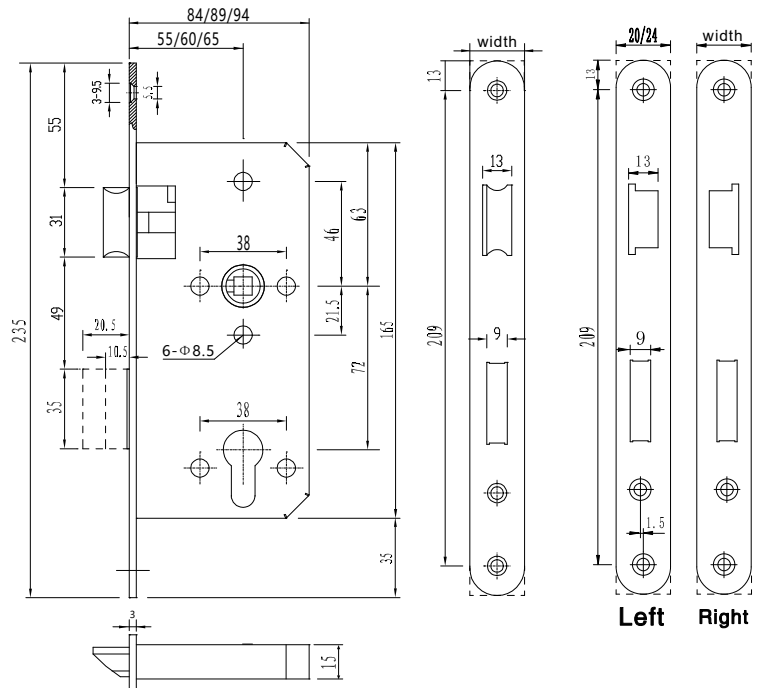


PZ = Profile cylinder
(DIN 18252)



Type

- H5572C □
- H6072C □
- H6572C □



H72C Series

Classification EN 12209

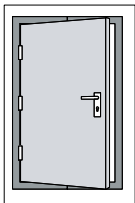
3 X 9 1 0 G 3 B C 3 0

Features

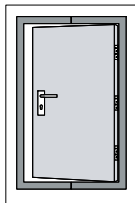
- According to DIN 18.250 class 3
- For wooden or steel doors with CE certificate
Lock case size DIN 18251-1, closed case with sleeves,
- Suitable for external fire or smoke protection doors
- Prepared for profile cylinders
- With key action
- Deadbolt 2-turns

DIN Left Hand

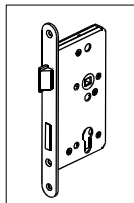
Visible position of the door hinges on the left



Opening out



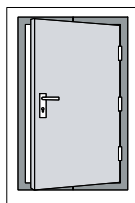
Opening in



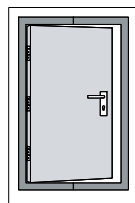
The straight side of the latch
points to the left

DIN Right Hand

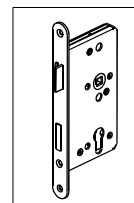
Visible position of the door hinges on the right



Opening out

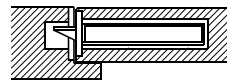


Opening in



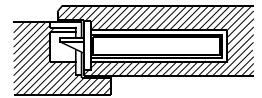
The straight side of the latch
points to the right

Door Type



profile of a non rebated door with mortise lock
(forend protruding on one side)

Rebated Door Type



profile of a rebated door with mortise lock
(forend protruding on one side)

Technical Data

- Follower 8X8mm 9X9mm
- Distance 72mm
- Backset 55mm 60mm 65mm

Forend

- Type round head, square head
- Thickness 3mm
- Width 20, 22, 24mm

Forend finish

- Stainless steel SSS PSS PVD

Accessories

- Striking plate
- Pocket
- Lock and strike plate fixing screws

Strike Plate Type



72Z-01R



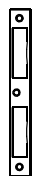
72Z-01S



72Z-02R



72Z-02S

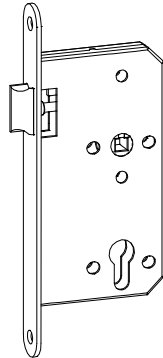
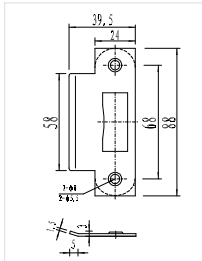


R72Z-01

Rebated Strike plate type

Heavy duty mortise lock

Mortise Lock Reversible, complying with DIN 18250, class 3, suitable for commercial buildings

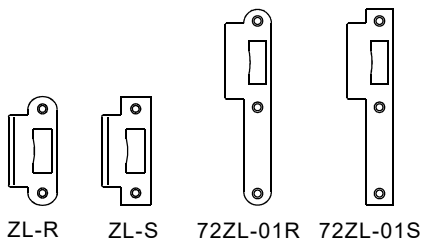


Type

- H5572CL ☐
- H6072CL ☐
- H6572CL ☐

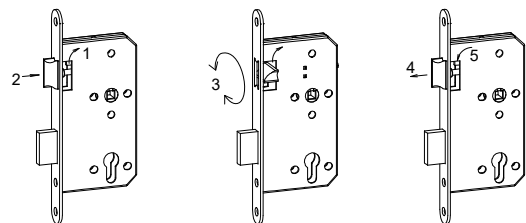
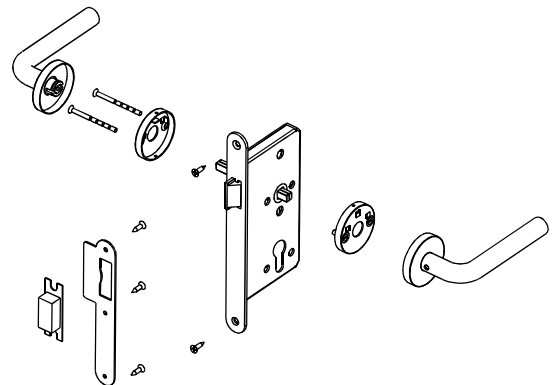


Strike plate type



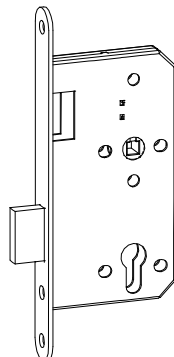
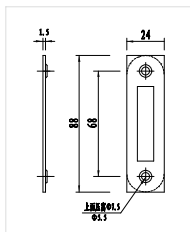
Latch Bolt Lock

H10001+H5572CL Configuration



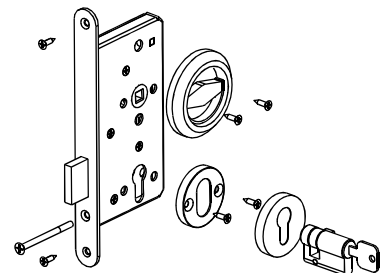
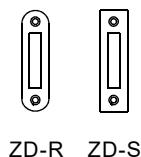
Reverse left/right hand

Dead Bolt Lock



Type

- H5572CD ☐
- H6072CD ☐
- H6572CD ☐



YH01+H5572CD+HH45 Configuration

Bathroom Lock

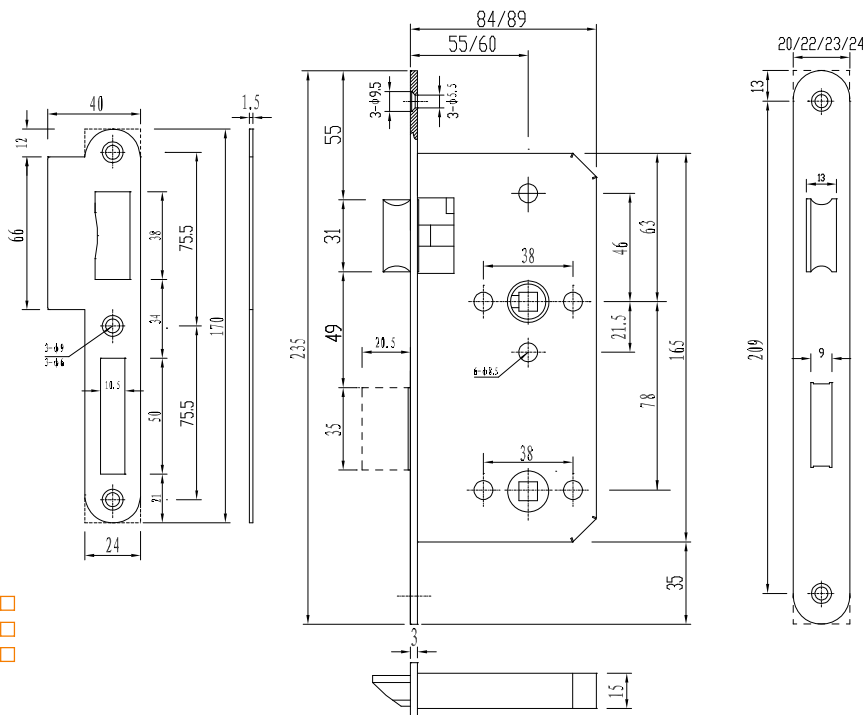


Follower 8-8



Type

- H5578C ☐
- H6078C ☐
- H6578C ☐



H72C Series

Technical data

- ① Follower 8-8/6/5mm 9-8/6/5mm
- ① Distance 78mm
- ① Backset 55mm 60mm 65mm

Forend

- ① Type round head, square head
- ① Thickness 3mm
- ① Width 20, 22, 24mm

Forend finish

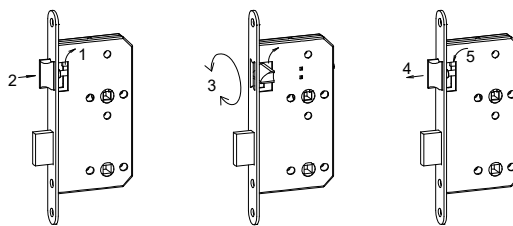
- ① Stainless steel SSS PSS PVD

Accessories

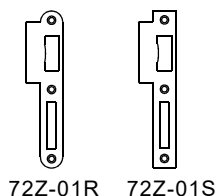
- ① Striking plate
- ① Pocket
- ① Lock and strike plate fixing screws

Features

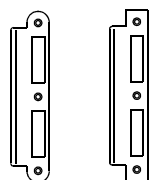
- ① According to DIN 18.250 class 3
- ① For wooden or steel doors with CE certificate
- Lock case size DIN 18251-1, closed case with sleeves,
- ① For bathroom doors
- ① With turn knob action
- ① Deadbolt 1-turns



Strike plate type

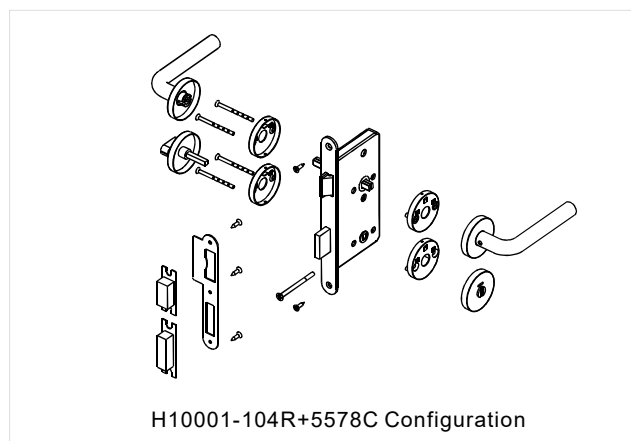


72Z-01R 72Z-01S



72Z-02R 72Z-02S

Reverse left/right hand



H10001-104R+5578C Configuration

Mortise lock complying with DIN 18250, class 3,
suitable for commercial buildings

H85 Series

- Fixed follower mounted in stainless steel ring.
Forend latch and bolt stainless steel,
prepared for profile cylinder with transmission.



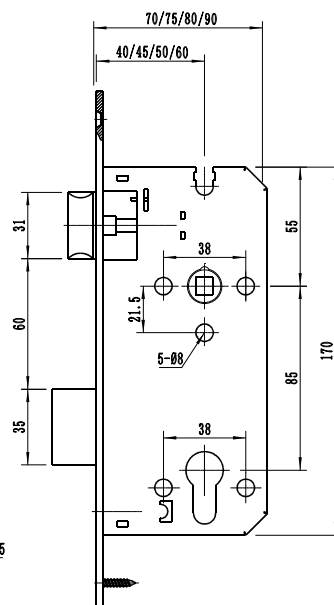
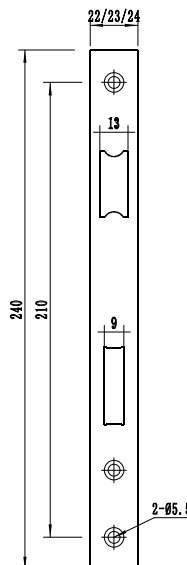
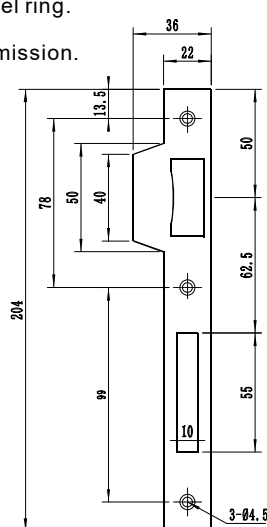
Follower 8X8



PZ = Profile cylinder
(DIN 18252)

Type

H4085Z □ H4585C □
H5585Z □ H5085C □
H6085C □



H85 Series

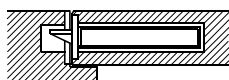
Classification EN 12209

3 X 9 1 0 G 3 B C 3 0

Features

- According to DIN 18.250 class 3
- For wooden or steel doors
- Suitable for external fire or smoke protection doors
- Prepared for profile cylinders
- With key action
- Deadbolt 2-turns

Door Type



profile of a non rebated door with mortise lock
(forend protruding on one side)



Technical Data

Follower 8X8mm(nickel-coated)
Distance 85mm
Backset 45mm 50mm 55mm 60mm

Forend

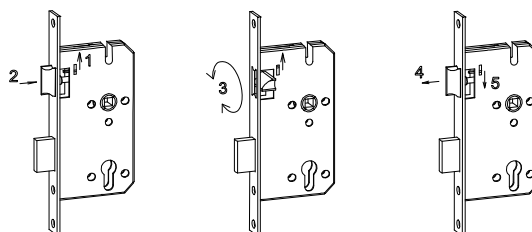
Type round head, square head
Thickness 3mm
Width 22, 23, 24mm

Forend finish

Stainless steel SSS PSS PVD

Accessories

Striking plate-Stainless steel
Pocket
Lock and strike plate fixing screws



Reverse left/right hand

Roller Latch lock



Features

- According to DIN 18.250 class 3
- For wooden or steel doors
- Optional for non-rebated doors
- Suitable for external fire and smoke protection doors
- Prepared for profile cylinders
- With key drive roller retraction
- Deadbolt 2-turns

Technical data

| | |
|----------|----------------|
| Follower | 8X8mm |
| Distance | 72mm |
| Backset | 55mm 60mm 65mm |

Forend

| | |
|-----------|-------------------------|
| Type | round head, square head |
| Thickness | 3mm |
| Width | 22, 24mm |

Forend finish

Stainless steel SSS PSS PVD

Accessories

Striking plate
Lock and strike plate fixing screws

H72C Roller-Series

Type

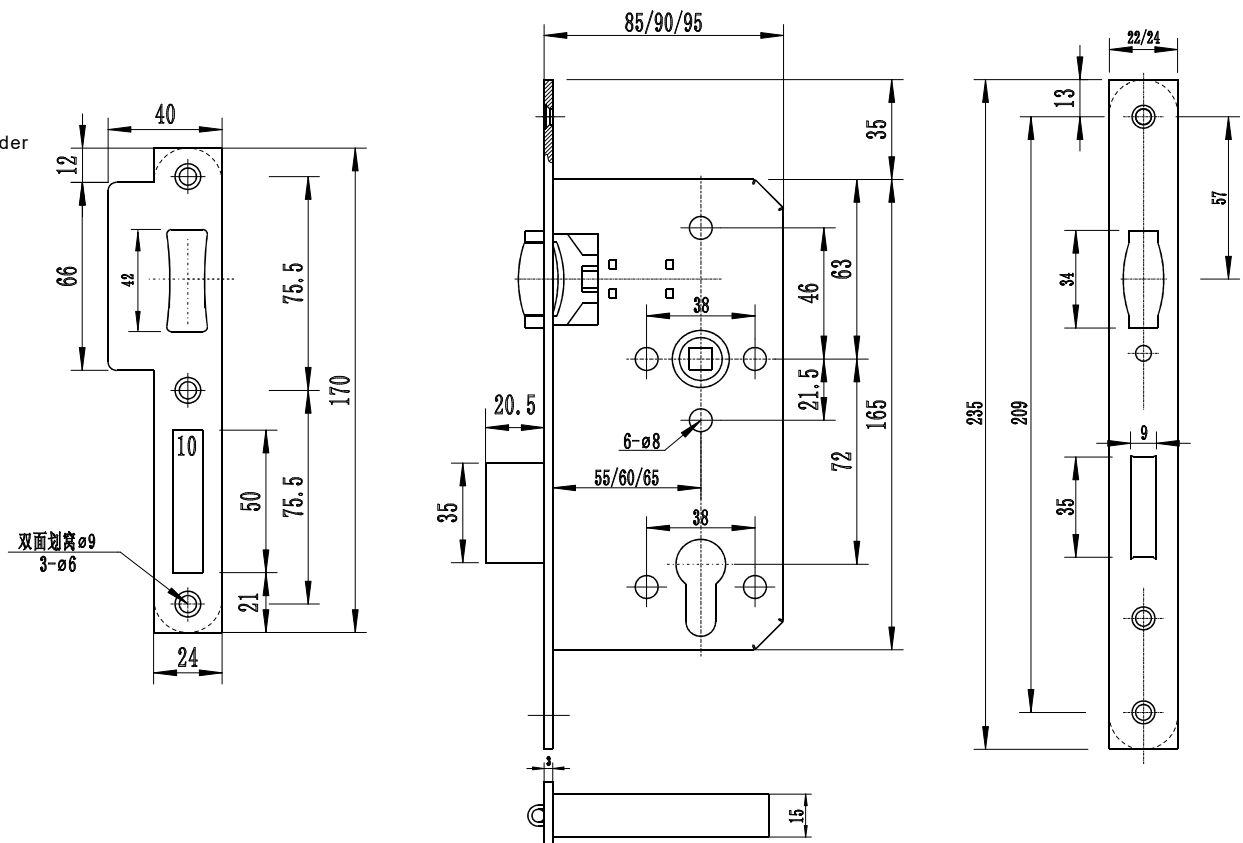
- H5572CR ☐
- H6072CR ☐
- H6572CR ☐



Follower 8X8



PZ = Profile cylinder
(DIN 18252)



Roller Latch lock



Features

- According to DIN 18.250 class 3
- For wooden or steel doors
- Optional for non-rebated doors
- Suitable for external fire and smoke protection doors
- Prepared for profile cylinders
- With key drive roller retraction
- Deadbolt 2-turns

H85C Roller-Series

Technical data

| | |
|----------|----------------|
| Follower | 8X8mm |
| Distance | 85mm |
| Backset | 45mm 50mm 60mm |

Type

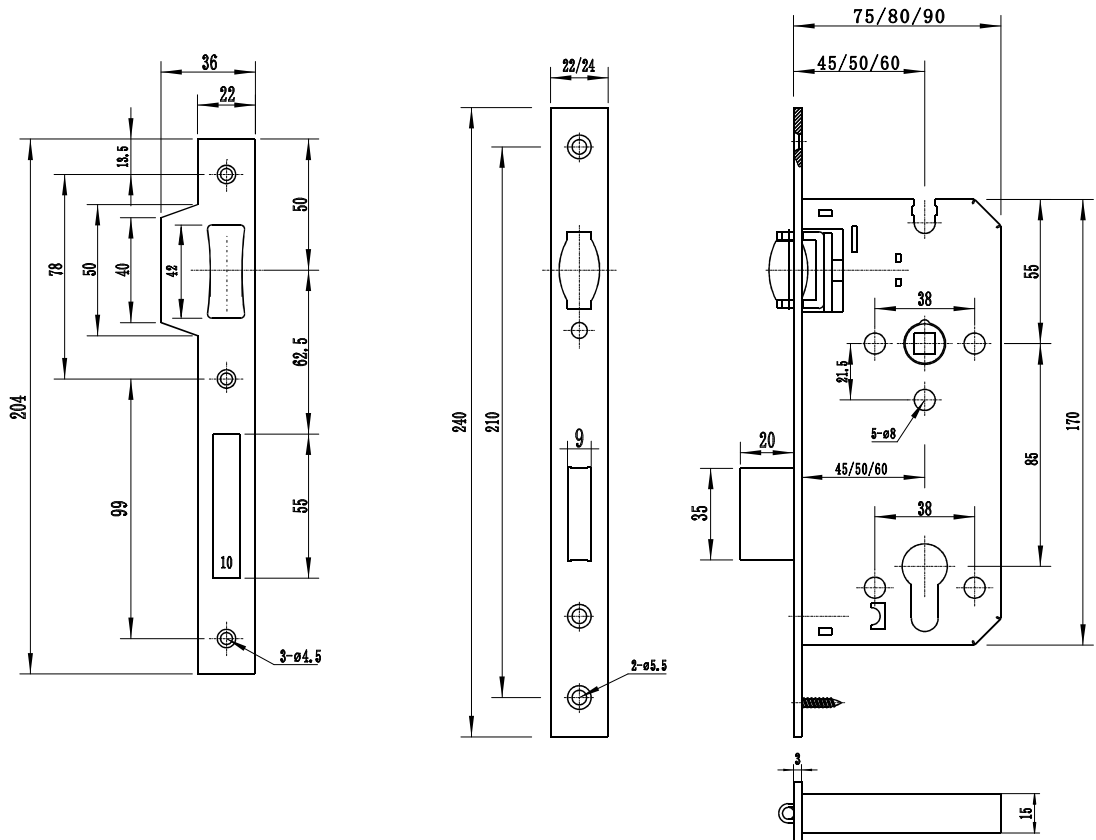
- H4585CR ☐
- H5085CR ☐
- H6085CR ☐



Follower 8X8

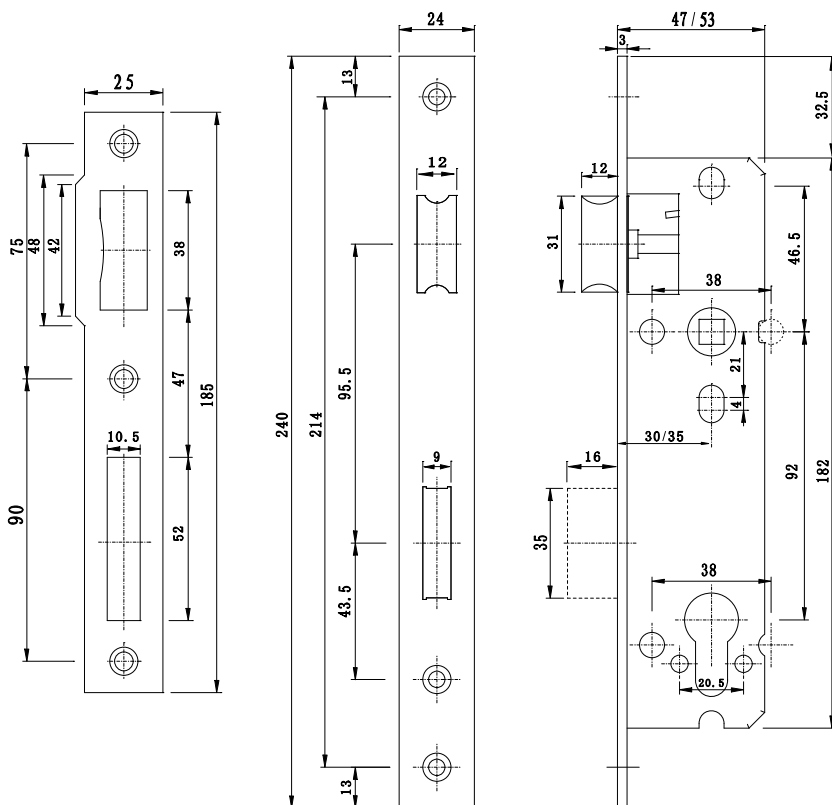


PZ = Profile cylinder
(DIN 18252)



Standard lock

Mortise lock reversible

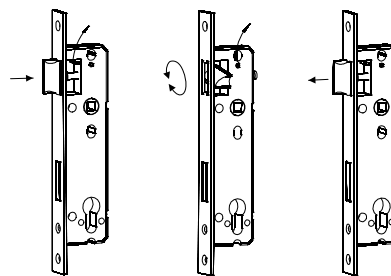


钢制型材门锁体

Steel profile door lock body

Features

- According to DIN 18.251-2 class 3
- For steel doors
- Optional for non-rebated doors
- Suitable for fire and smoke protection doors
- Prepared for profile cylinders
- With key action
- Deadbolt 1-turn



Reverse left/right hand

Technical data

- Follower 8X8mm
- Distance 85mm 92mm
- Backset 30mm

Forend

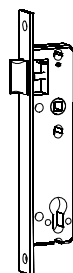
- Type square ends
- Thickness 3mm
- Width 22mm 24mm

Forend finish

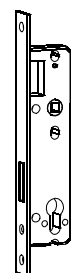
- Stainless steel SSS PSS PVD

Accessories

- Striking plate
- Pocket
- fixing screws

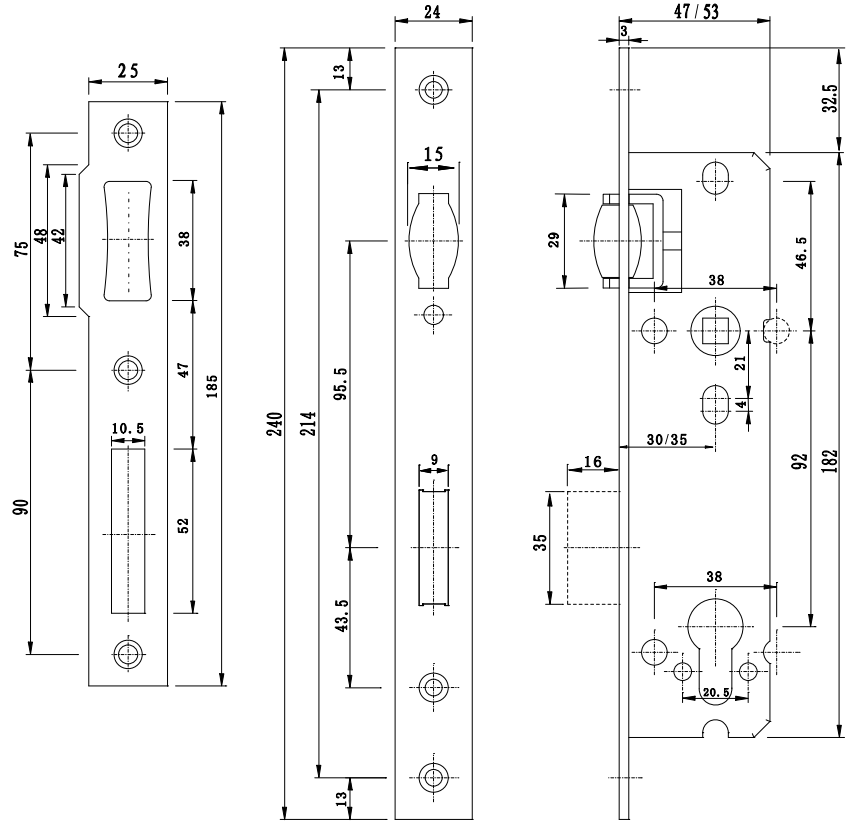
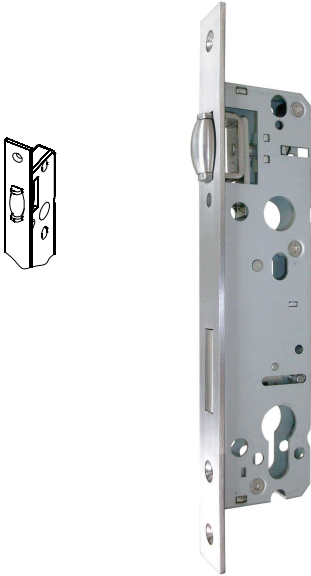


- Type:
- 3092ZL ☐
 - 3592ZL ☐
 - 3085ZL ☐



- Type:
- 3092ZD ☐
 - 3592ZD ☐
 - 3085ZD ☐

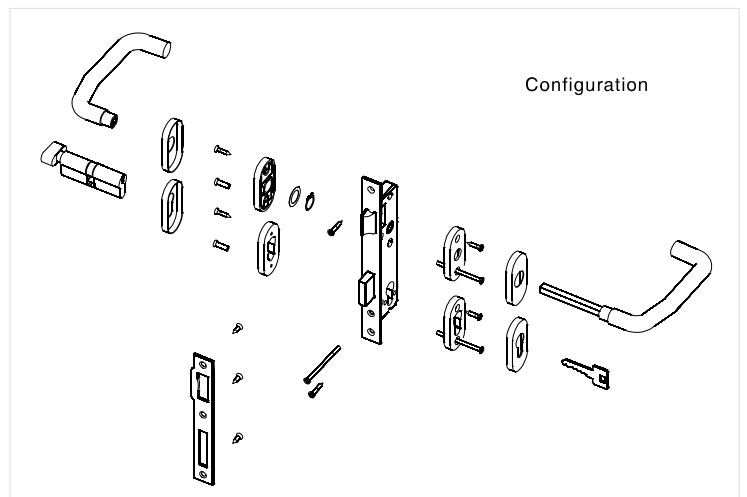
Roller lock H72Z Series



- Type: ☐ 2092ZR ☐ 2592ZR ☐ 3092ZR ☐ 3592ZR

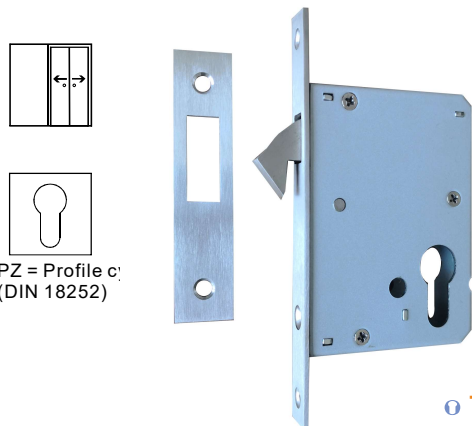


PZ = Profile cylinder
(DIN 18252)



Mortise sliding door lock with rim dead bolt,
suitable for commercial buildings

Single hook lock



PZ = Profile c:
(DIN 18252)



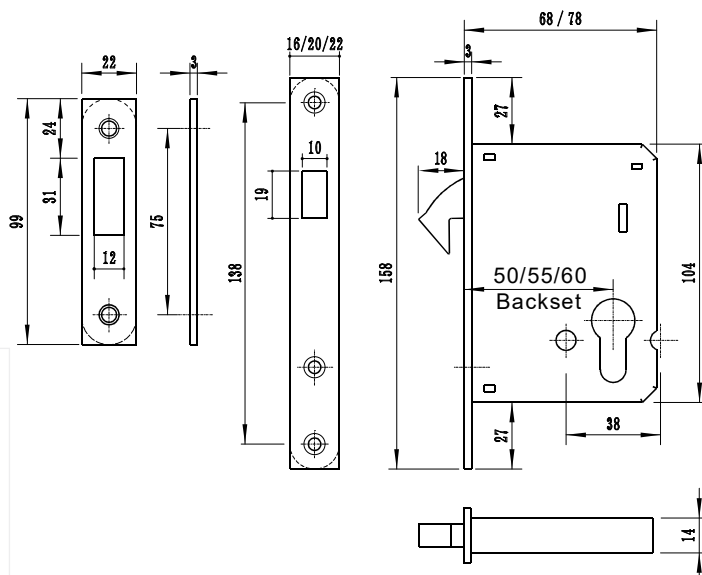
- Forend and bolt stainless steel.
Function of the bathroom
Fixed follower is installed in the cylinder hole.

Features

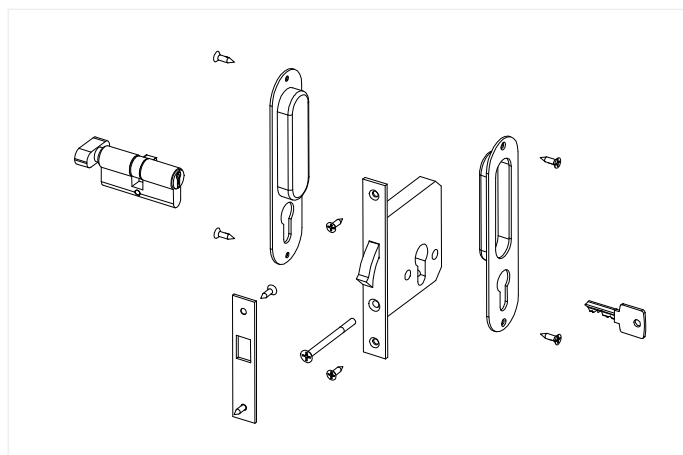
- According to EN 12209
- For wooden or steel doors
- Suitable for external fire or smoke protection doors
- Prepared for profile cylinders
- With key action
- Deadbolt 1-turns

Type

- H50SD
- H55SD
- H60SD



FH03+50SD+HT65K01 Configuration



Technical Data

- Follower 8X8mm (7X7mm) Stainless steel
- Backset 50mm 55mm 60mm

Forend

- Type round head, square head
- Thickness 3mm
- Width 16, 20, 22mm

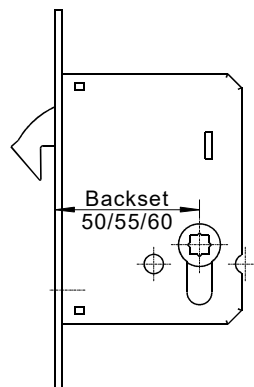
Forend finish

- Stainless steel SSS PSS PVD

Accessories

- Striking plate-Stainless steel
- Pocket
- Lock and strike plate fixing screws

Function of the bathroom



Follower 8X8
Follower 7X7

Type

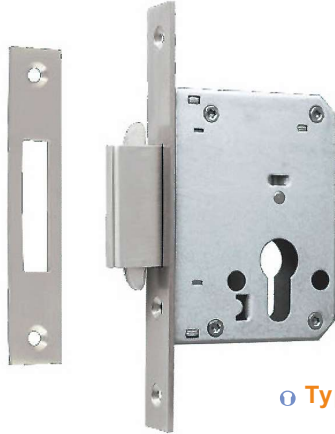
- H50SD-B
- H55SD-B
- H60SD-B

Double hook lock

Mortise sliding door lock with rim dead bolt, suitable for commercial buildings



PZ = Profile cylinder
(DIN 18252)



Features

- According to EN 12209
- For wooden or steel doors
- Suitable for external fire or smoke protection doors
- Prepared for profile cylinders
- With key action
- Deadbolt 2-turns

Type

- H40S ☐
- H50S ☐

Technical data

- Backset 40mm 50mm

Forend

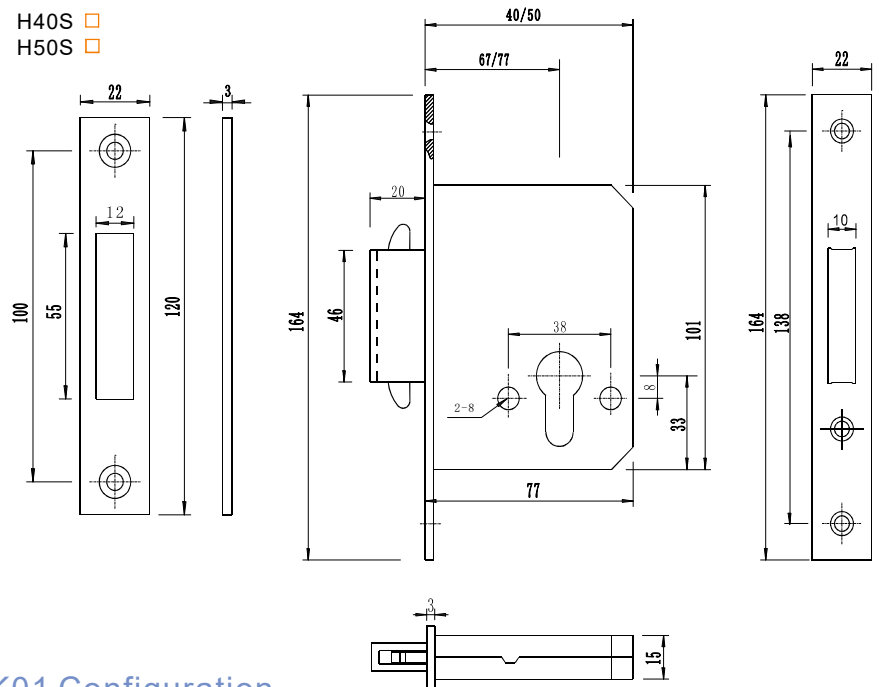
- Type square head
- Thickness 3 mm
- Width 22 mm

Forend finish

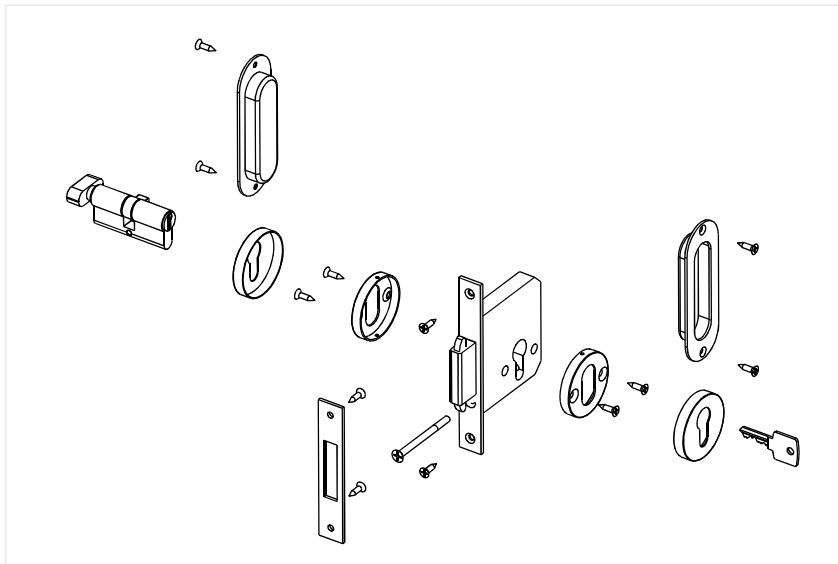
- Stainless steel SSS PSS PVD

Accessories

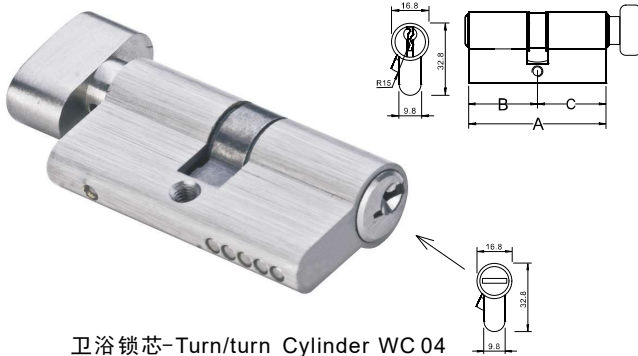
- Striking plate
- Pocket
- Lock and strike plate fixing screws



FH01+H00+50S+HT65K01 Configuration



单边手轮锁芯 key/Turn Cylinder C01

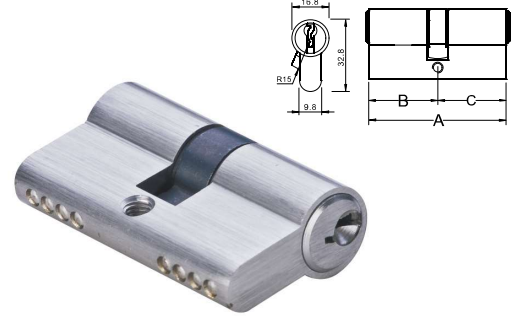


卫浴锁芯-Turn/turn Cylinder WC 04

尺寸(mm)

| A | B | C |
|----|------|------|
| 65 | 32.5 | 32.5 |
| 70 | 35 | 35 |
| 75 | 37.5 | 37.5 |
| 80 | 40 | 40 |

双边锁芯 key/key Cylinder C02



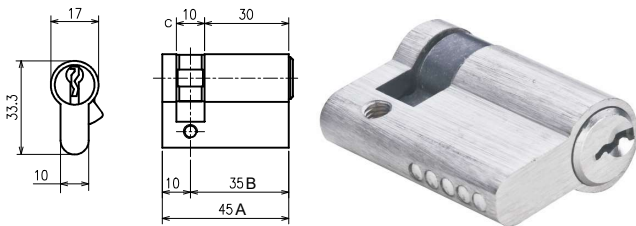
尺寸(mm)

| A | B | C |
|----|------|------|
| 65 | 32.5 | 32.5 |
| 70 | 35 | 35 |
| 75 | 37.5 | 37.5 |
| 80 | 40 | 40 |

Classification EN 1303

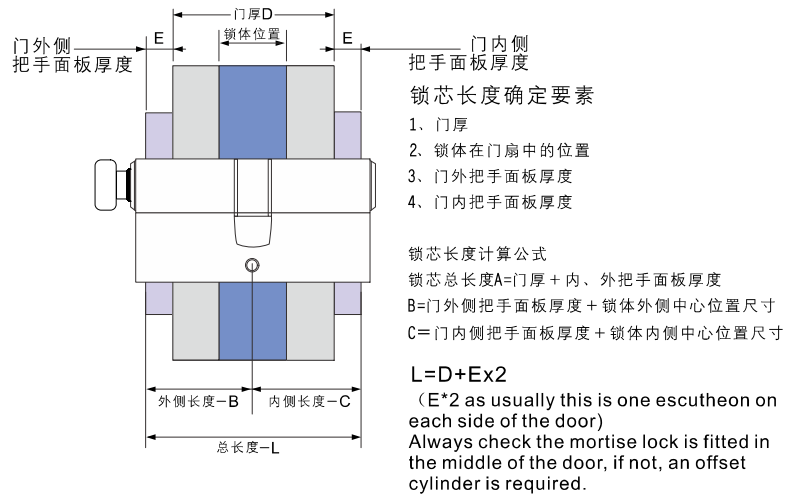
| | | | | | | | |
|---|---|---|---|---|---|---|---|
| 1 | 6 | 0 | 0 | 0 | C | 4 | 0 |
|---|---|---|---|---|---|---|---|

单边半锁芯 Half Cylinder C03



尺寸(mm)

| A | B | C |
|----|----|---|
| 40 | 35 | 5 |
| 45 | 40 | 5 |



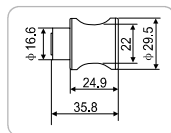
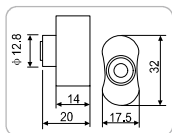
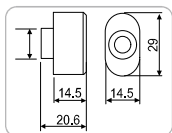
K01



K02



K03



Finish available



PVD

Mirror

Satin

Black

总钥匙=GGMK
GGMK: Great Grand Master Key

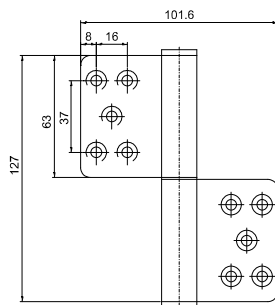
次总钥匙=GMK
GMK: General Master Key

总钥匙=MK
MK: Master Key

单钥匙
Single Key

总钥匙功能
只需一条总钥匙，即可轻松开启公司及家中的任何一个门
可以让您按照员工的职别来设定其开启权限
最高可做6级总钥匙管理系统
适用于各类锁上

Function of GGMK
GGMK can access all the door
Authority the key lever to the employee to allow the right access.
Max GGMK lever: 6



F H504030

旗式防火合页 Fire rated flag hinge

执行标准: 中国GB12955-2008防火标准, 90分钟防火
表面处理: 不锈钢拉丝, 青古铜, 红古铜, PVD,
适用门型: 木质及钢制防火门, 防盗门, 工业大门等
配件描述: 钢制M6*16机螺丝或M5*32木螺丝
轴心直径: 12-18MM钢制

Certificated by GB12955-2008, 90mins fire rated

Finish: SS, AB, PS and PVD

Suit for wooden/steel door, security door, industrial door

Accessories : steel M6*16 bolt or M5*32 screw

Diamater of bear: 12-18mm, steel

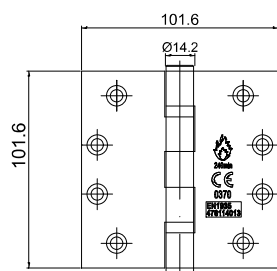
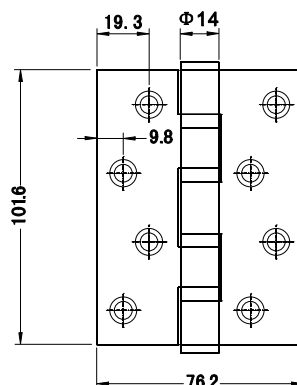
F 403030-4BB

欧标防火轴承合页 Fire rated butt bearing hinge

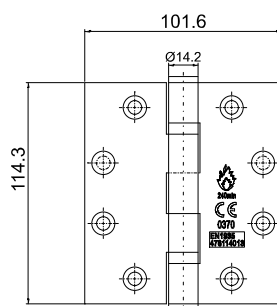
| 适用门厚 Door thickness | 合页规格 Hinge Size | 适用门重 Door weight | 使用数量 Quantity |
|------------------------|--------------------|---------------------|------------------|
| 45-50MM | 4X3X3 | 45-65Kg | 3片 |

Classification EN 1935

| | | | | | | | |
|---|---|---|---|---|---|---|----|
| 4 | 7 | 6 | 1 | 1 | 4 | 0 | 13 |
|---|---|---|---|---|---|---|----|



404030-2BB

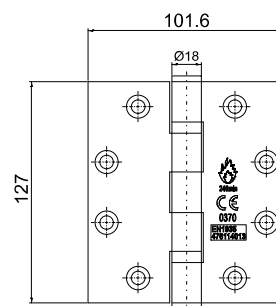


454030-2BB

F 504030-2BB 454030-2BB 404030-2BB

防火轴承合页 Fire rated butt bearing hinge

| 适用门厚 Door thickness | 合页规格 Hinge Size | 适用门重 Door weight | 使用数量 Quantity |
|------------------------|--------------------|---------------------|------------------|
| 45-50MM | 4X4 | 55-80KG | 3片 |
| 51-55MM | 4.5X4 | 70-85KG | 3片 |
| 56-65MM | 5X4 | 70-85KG | 3片 |



504030-2BB

SW 01



欧标顺位器 Door Coordinator

执行标准: 中国GB12955-2008防火标准, 90分钟防火
表面处理: 不锈钢拉丝, PVD
适用门型: 木质及钢制防火门
功能描述: 与闭门器配合使用, 使双开门顺利关闭
材质说明: SUS304不锈钢
尺寸说明: 280MM*90MM

Compliance: GB12955-2008, fire rated 90mins
Finish: SS, PVD
Suit for wooded and steel fire rated door
Function: work with door closer
Material: stainless steel 304
Size: 280*90mm

SW 02



美标暗藏顺位器 Conceal Door Coordinator

执行标准: 中国GB12955-2008防火标准, 90分钟防火
表面处理: 不锈钢拉丝
适用门型: 木质及钢制防火门
功能描述: 与闭门器配合使用, 使双开门顺利关闭
材质说明: SUS304不锈钢
尺寸说明: 32"(812MM)/42"(1066MM)
52"(1320MM)/62"(1575MM)/72"(1829MM)

Compliance: GB12955-2008, fire rated 90mins
Finish: SS
Suit for wooded and steel fire rated door
Function: work with door closer
Material: stainless steel 304
Size: 32"(812mm)/42"/52"/62"/72"

CX 01



自动防火插销 Fire rated flush bolt

执行标准: 中国GB12955-2008防火标准, 90分钟防火
表面处理: 不锈钢拉丝, PVD
材质说明: SUS304不锈钢精密铸造
适用门型: 木质门/钢制防火门
尺寸规格: 165MM*55MM
安装位置: 从动门扇的两端

Compliance: GB12955-2008, fire rated 90 mins.
Finish: SS, PVD
Material: stainless steel 304
Suit for wood/steel fire rated door
Size: 165mm*55mm
Location: Both ends of the driven door

Satin



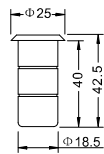
PVD



CX 02



Satin



FC 01



钢质门防火插销

Fire rated flush bolt for steel door

执行标准：中国GB12955-2008防火标准，90分钟防火

表面处理：不锈钢拉丝

材质说明：SUS304不锈钢

适用门型：钢质防火门

连杆配置：250MM长双头螺纹连杆，直径8MM，

安装位置：从动门扇的两端

Compliance: GB12955-2008, fire rated 90 mins.

Finish: SS

Material: stainless steel 304

Suit for steel fire proof door

Accessories : 250mm length bolt. Diamater 6mm

Installed position: Both ends of the driven door

CX 03



订货描述

规格型号：DS01

配合插销头最大直径：Φ13mm

材质：SUS 304不锈钢

表面处理：SSS

Satin

PVD



木质门防火插销

Fire rated flush bolt for wooden door

执行标准：中国GB12955-2008防火标准，90分钟防火

表面处理：不锈钢拉丝，PVD

材质说明：SUS304不锈钢

适用门型：木质防火门

可选规格：8寸/12寸/18寸

安装位置：从动门扇的两端

Compliance: GB12955-2008, fire rated 90 mins.

Finish: SS, PVD

Material: stainless steel 304

Suit for wooden fire rated door

Size: 8"/12"/18"

Location: Both ends of the driven door

CX 04



Satin



钢质门双向防火插销

Fire rated flush bolt for steel door

执行标准：中国GB12955-2008防火标准，90分钟防火

表面处理：不锈钢拉丝

材质说明：SUS304不锈钢

适用门型：钢质防火门

连杆配置：出厂不配连杆，可采用常规M6螺纹杆

安装位置：从动门扇的中间位置

Compliance: GB12955-2008, fire rated 90 mins.

Finish: SS

Material: stainless steel 304

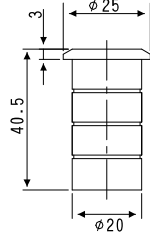
Suit for steel fire proof door

Accessories : M6 bolt optional

Location: middle of the driven door



FC 01



防尘筒

Dust proof strike

表面处理: 不锈钢拉丝
材质说明: SUS304不锈钢
使用说明: 配合各种插销使用

Finish: Satin Steel
Material: stainless steel 304
Use with the bottom bolt of all flush bolts.



LH 02



拉手

Pull handle

尺寸说明: $\phi 19 \times 250/300\text{MM}$
表面处理: 不锈钢拉丝
材质说明: SUS304不锈钢
使用说明: 用于乙级防火门带门作用

Model#: LH08
Size: $\phi 19 \times 250/300\text{MM}$
Material: stainless steel 304
Applicable area: fire rated door



LH 01

圆环拉手

Flush ring handle

表面处理: 不锈钢拉丝
材质说明: SUS304不锈钢
使用说明: 管井门, 起暗拉手 / 转舌作用

Model#: LH-01
Finish: satin finish
Material: stainless steel 304
Applicable area: well door



MY 01



门镜

Door viewer

表面处理: 香槟、镍拉丝、青古铜、金、红古铜
材质说明: 铜、锌合金、塑料
使用说明: 适用于家庭、办公室、酒店的入户门
Finish: Zinc alloy, copper, plastic
Material: SN, Satin Nickel (SC/CP/AC/AB/GP etc.)
Applicable area: Wooden Door, Steel Door
(Front door home office and Hotel Door)



WC-104R



卫浴门指示旋钮

Indication thumb knob

表面处理: 不锈钢拉丝
材质说明: SUS304不锈钢
使用说明: 适用于浴室门

Finish: satin finish
Material: stainless steel 304
Applicable area: prepared for bathroom door

FD-01



防盗扣

Anti burglary protection

表面处理: 不锈钢拉丝
材质说明: SUS304不锈钢
使用说明: 适用于入户门防盗

Finish: satin finish
Material: stainless steel 304
Applicable area: anti-theft for entry door



推拉手板
Pull/Push Plate

尺寸说明: 可以根据要求订制尺寸, 标准 300X80 300X100
表面处理: 不锈钢拉丝蚀刻字
使用说明: 适用木质门, 钢质门, 多语言选择

Customize dimension according to requirement
Standard size: 300X80 300X100
Finish:satin finish
Material:stainless steel 304
Applicable:Suitable for wooden or steel doors in public area,Available for all kinds of Languages



踢脚板
Kick Plate

尺寸说明: 根据要求订制尺寸
表面处理: 不锈钢拉丝
使用说明: 适用木质门, 防止门边碰坏

Customize dimension according to requirement
Finish:satin finish
Material:stainless steel 304
Applicable:for wooden doors,prevent door border from collision



门挡
Door stop

表面处理: 不锈钢拉丝
材质说明: SUS304不锈钢
使用说明: 地面安装, 防止门及把手与墙碰撞
橡胶缓冲垫
Finish: satin finish
Material:stainless steel 304
Applicable area:protect the door



MD 02

MD 04

门挡
Door stop

表面处理: 不锈钢拉丝
材质说明: SUS304不锈钢
使用说明: 地面安装, 防止门及把手与墙碰撞
橡胶缓冲垫
Finish: satin finish
Material:stainless steel 304
Applicable area:protect the door



门顶
Door stop

表面处理: 不锈钢拉丝
材质说明: SUS304不锈钢
使用说明: 安装门背面, 防止门及把手与墙碰撞, 可挂衣物
橡胶缓冲垫
Finish: satin finish
Material:stainless steel 304
Applicable area:protect the door



门吸
Door stop

表面处理: 不锈钢拉丝
材质说明: SUS304不锈钢
使用说明: 地面安装, 防止门及把手与墙碰撞
带有磁吸力, 固定门扇
Finish: satin finish
Material:stainless steel 304
Applicable area:magnetic force to fix door leaf



Super scale brand inventory Ready to deliver

Provide display system for
fireproof hardware solution

More products ▼



北京弘司康达科技有限公司

BEIJING HSK TECHNOLOGY CO.,LTD

北京市通州区台湖北里东亚环球国际29号楼452

ADD:#4-452,No.29 Building,North area of Tai Hu,Tongzhou District,Beijing,china.

Postcode:101116

TEL: 0086-10-85386092

Email:info@houselock.com.cn

<https://www.hsklock.com>

ROCK. 安恒通®



**Provide display system for
fireproof hardware solution**