

Instruction of Mobile Network Radio

■Safety Warning before use

Do not use the mobile radio in the explosive environments (such as gas , dust , steam , etc .)

Please turn off the mobile radio : The machine can not be modified or adjusted for any reason.

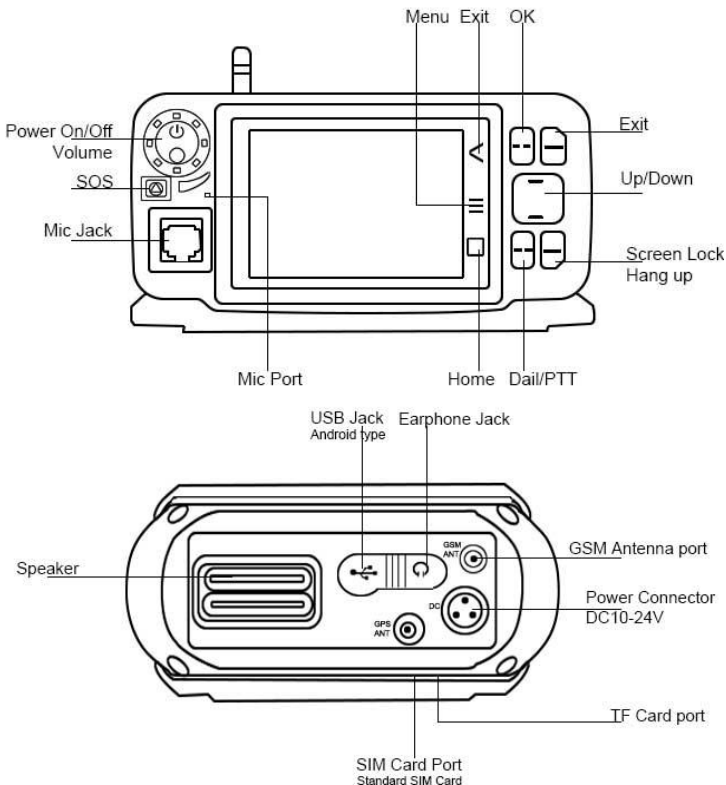
Please don't let the mobile radio stand in sunlight directly for a long time , or put it near by the heating appliances.



Do not place mobile radio in extremely dusty ,moisture and water splashing places , and do not put in uneven surface.

Maintenance can only be carried out by professional and technical personnel , Please do not disassemble by oneself.

Input DC 10-24V, please Do not directly connect 220V/110V power supply, may cause burn to the PCB

■Get familiar to your Radio



Power /Volume	*Long press to On/Off the Radio (only for without acc cable) *short press for lock screen *Turn clockwise to volume+, Turn counterclockwise volume-
 SOS Key	*for talking app, Short press SOS key to send SOS message to Dispatcher, selected group or group members
	*Exit back to last Interface
Menu	*Shortcut to enter to the setting of the current page or function
Home	*Shortcut to home interface
OK	*Enter/ yes/ type message change line
Exit	*Exit current page or interface
Up/Down	*Up or Down direction control to choose
Screen lock/Hang up	*Hang up a call or close screen
Dial /PTT	*Talking app as PTT, shortcut to talking app /phone call dial interface

■Get started

First of all, you have to prepare a sim card (standard size) with data flow function activated for your network radio.

1.1 Connect ACC power cable to your Radio

Ex-work cable is with automatically power on function, for home power supply, red is positive, black is negative, blue for ignore.

For install to car, connect blue cable will automatically power on when you start your car.

1.2 Install GPS & GSM Antenna to the radio

Please Install Antenna to the radio before use or there maybe no signal.

1.3 **Install SIM CARD:** bottom of the Radio is Sim card port (standard size), insert the SIM card, and close the dust cover.

(How to choose SIM card? 850/1800/1900/2100MHz; Standard SIM size, With economic data flow to save the cost; Choose the service provider stable signal)

1.4 **Connect WIFI: Settings-->Wi-fi:** connect your Wifi to offer data to the Radio.

As the touch screen radio same as smart phone for some basic use here will not explain much.


Download app

2.1.Download the app from “Play Store”

2.2Search on “Browser” to download the app

2.3.Download from computer: Settings-->about phone-->Build number, click”Build number” 4 times: ”you are now a developer!” ,back-->”developer options”-->USB debugging ✓, then connect USB cable with radio (Android type), go to home page in the Notifications shade, which pulls down from the top of the screen.”connected as USB storage”-->”Media device(MTP)” ,choose it.

Now in computer Keep apk in file fold “my PC”-->”htl_n60_emmc”-->phone storage--download find this APK on the same path on your radio, tick it to install

(ex-work install apk right is locked, to open, home---->type *##9981#*#*-->allo install app)

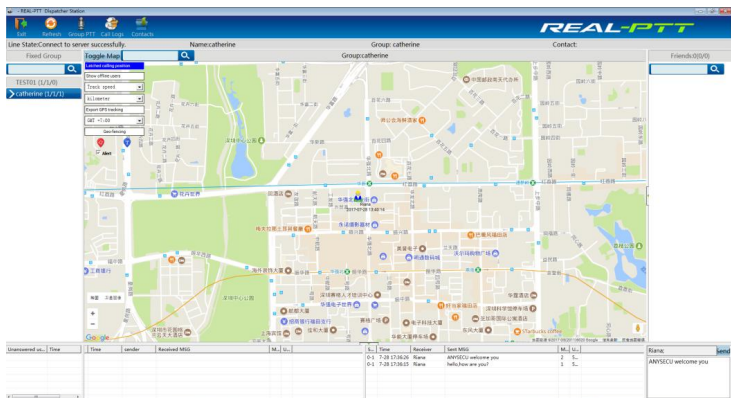
2.4.Download to micro TF card, then install from TF card to the radio

Flash or Root right please refer to your agency as we highly require professional to operate.

Platform Introduce: About Real PTT

3.1 **Login Account on Mobile radio by type** (area depends on server area, your country or the nearest, account cost yearly fee, need buy from radio supplier or local agency to get)

3.2 **Login PC Platform (dispatcher)** to Manage your Radio and more function



Download Real-PTT and login in your account, On PC Press “Space key” to Talk, other function can use your mouse to control.



3.3 Login Smart phone to talk

Download RealPTT APP and Same operate as you login on the mobile Radio.

General Specification

CPU	MT6572V/X, Dual core processor 1.0G
RAM	512MB
Storage	4GB
OS	Android 4.4.2
Screen Size	4.5 inches, 480x320mm
Language	English/Chinese
Frequency band	WCDMA Band1/2/5 and GSM Band2/3/5/8 (WCDMA Band1/8 and GSM Band2/3/5/8)
Antenna	1)WCDMA/GSM with external antenna 2)GPS antenna with external antenna 3) BT/WIFI antenna is built-in FPC antenna
Wifi	IEEE802.11 b/g/n

Bluetooth	Bluetooth 3.0HS
GPS	GPS/AGPS
USB	USB 2.0
SIM Type	Standard sim card
Dimension	170x80x85mm
Weight	380g
Working Voltage	DC 10-24V
Working Temperature	-30℃ to +75℃
Platform Tested	RealPTT, Zello
Talk Range	Limitless in WCDMA/GSM Coverage
RF Parameter	
Frequency Range	850/ 900//1900/2100MHz
Maximum Output Power	WCDMA 2100/1900/900/850MHz: Power class 3 (+24dBm +2.5/-1.5dBm) GSM/GPRS 850MHz/900MHz: Power class 4 (+33dBm +2.5/-0.5dBm) GSM/GPRS 1800MHz/1900MHz: Power class 1 (+30dBm +2.5/-0.5dBm)
Receiving Sensitivity	WCDMA 2100: ≤-108dBm WCDMA1900: ≤-109dBm WCDMA900: ≤-109dBm WCDMA850: ≤-109dBm GSM850/900/1800/1900: ≤-107dBm
GPS	
GPS	GPS Positioning, Support A-GPS function,1.57542GHz;
Sensitivity	Catch -144dBm, Track -159dBm
Technical Sensitivity	
Data Speed Rate	GSM CS: UL 9.6kbps/ DL 9.6kbps GPRS: Multi-slot Class 10 EDGE: Multi-slot Class 12 WCDMA CS: UL 64kbps/ DL 64kbps WCDMA PS: UL 384kbps/ DL 394kbps
Protocol	HSDPA/WCDMA/EDGE/GPRS/GSM
WIFI	
WIFI	IEEE 802.11 b/g/n , 2.4G;
Maximum RF power	≤20dBm
Receiving Sensitivity	IEEE 802.11 g: ≤-65dBm;
Bluetooth	
Bluetooth	Support V4.0,V3.0,V2.1
Maximum RF power	Class 1 ≤10dBm;
Receiving Sensitivity	GFSK: ≤-95dBm,DQPSK: ≤-94dBm , DPSK: ≤-88dBm;

we endeavors to achieve the accuracy and completeness of this manual, but it is still not perfect for any possible omissions or printing errors. All the above functions and design are subject to be updated without prior notice due to continuous development.