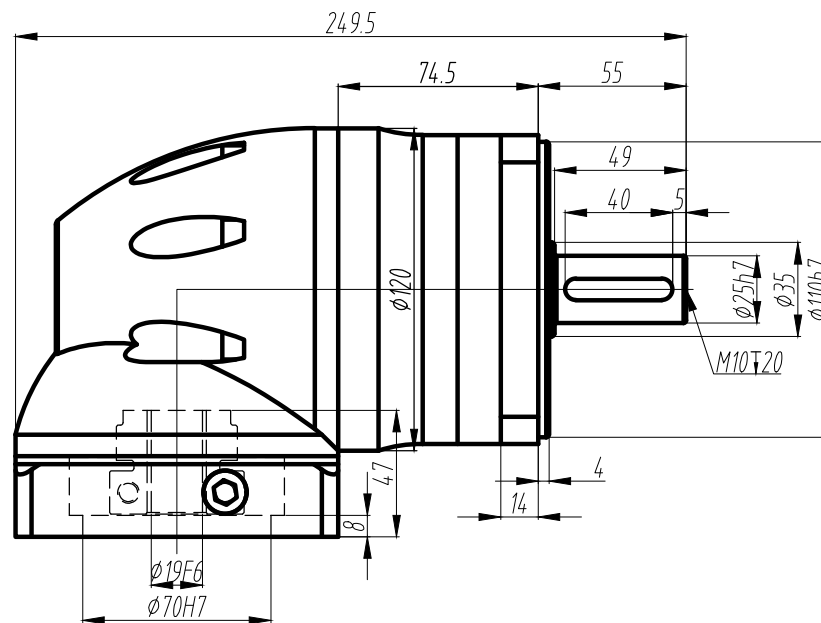
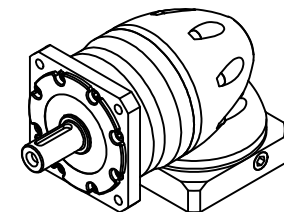


Technical drawing of a square flange with a central circular feature. The drawing includes dimensions: 4-Ø8.5 for the outer holes, Ø130 for the central hole, Ø149 for the inner circle, 28 for the central hole diameter, 92 for the square flange side length, and 152 for the total diameter. A small dimension of 8 is also shown for the central hole's offset.



Technical drawing of a circular mechanical part, likely a flange or base plate. The drawing shows a square outer frame with rounded corners, containing concentric circles and a central circular feature. The outer square frame has a side length of 120. The inner circular features include a central circle with a diameter of $\phi 90$ and a larger circle with a diameter of 120. The central circle is labeled "4-M6牙深12", indicating it has 4 M6 threads with a depth of 12. The drawing also shows a dashed circle with a diameter of 120, and a solid circle with a diameter of 120. The central circle is surrounded by a ring with four rectangular slots. The drawing is a top view, showing the circular features and the square frame.

技术参数 technical parameter			
额定输出转矩 Nominal torquet	-----Nm	最大输出转矩 Max.output torque	-----Nm
额定输入转速 Rated input speed	3000rpm	最大输入转速 Max.input speed	5000rpm
最大径向力 Max.radial force	2200N	输出转速100rpm, 输出轴长1/2处为受力 Speed 100rpm,Axial length 1/2 stress	
最大轴向力 Max.axial force	1600N	输出转速100rpm, 输出轴长1/2处为受力 Speed 100rpm,Axial length 1/2 stress	
满载效率 Maximum efficiency	90%	使用温度 Operating temp	-25°~ +90°
安装方式 Installation method	任意 arbitrarily	润滑方式 Lubrication mode	长效润滑 Permanent lubrication
重量 Weight	10.0 Kg	寿命 Average life span	20000h
防护等级 Protection level	IP65	法兰精度 Flange accuracy	DIN 42955-R
标准侧隙 Standard backlash	≤11arcmin	精密侧隙 Precise backlash	
输出键标准 Key standard	圆头普通平键 Round common flat key (A) GB1096-79		
齿轮精度等级 Gear precision grade	6 GB/T10095-2008		
电机功率 Motor power	750W		
电机安装尺寸 Motor dimensions	φ19*40/φ70*3/4-φ6.5-φ90		



10	95.0
7	165.0
5	245.0
4	230.0
3	155.0
減速比(可変擇)	额定转矩(Nm)

						GFR120-L1-D	上海固佐		
标记	处数	分区	更改文件号	签名	年月日				
设计			标准化			数量	重量	比例	
								1:1	
审核						 			
工艺			批准						