



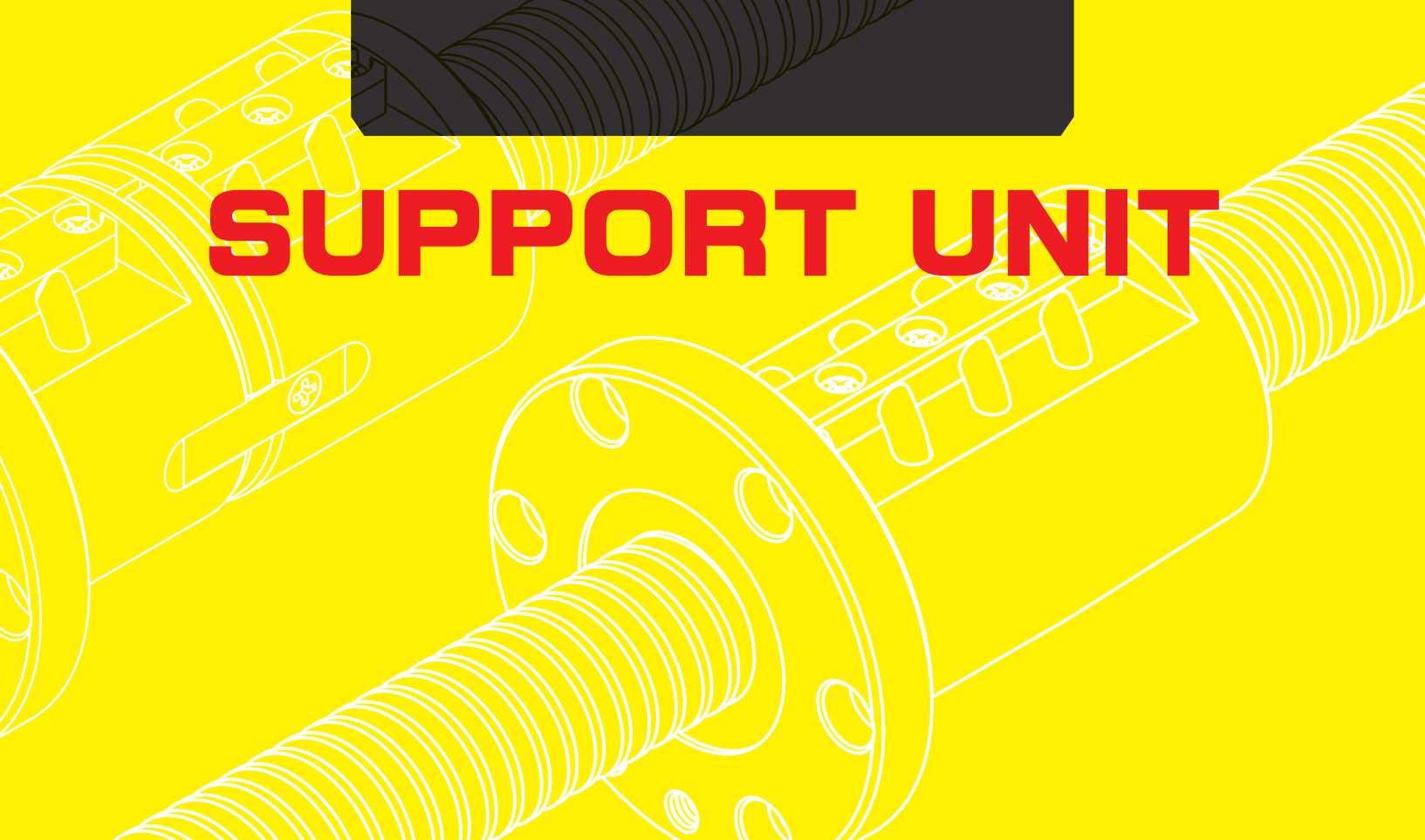
Made in Taiwan

# 螺桿支撐座

**BALL SCREW SUPPORT UNIT**



**SUPPORT UNIT**



### 支撐座各廠牌型號對照表

*Ballscrew support unit equivalent interchangeable  
for major manufacturer*

NSB & THK	NSB & THK	KURODA	NSK	NSB & THK	KURODA	NSK
BK10	EK5	-	-	FK5	-	-
BK12	EK6	BSW6	WBK06-01A	FK6	-	WBK06-11
BK15	EK8	BSW8	WBK08-01A	FK8	BRW8	WBK08-11
BK17	EK10	BSW10	-	FK10	BRW10	WBK10-11
BK20	EK12	BSW12	-	FK12	BRW12	WBK12-11
BK25	EK15	BSW15	-	FK15	BRW15	WBK15-11
BK30	EK20	BSW20	-	FK17	-	-
BK35				FK20	BRW20	WBK20-11
BK40	EF06	BUN06	-	FK25	BRW25	WBK25-11
	EF08	BUN08	WBK08S-01	FK30	-	-
BF10	EF10	BUN10	-			
BF12	EF12	BUN12	-	FF06	BUR-6	-
BF15	EF15	BUN15	-	FF10	BUR-10	-
BF17	EF20	BUN20	-	FF12	BUR-12	-
BF20				FF15	BUR-15	-
BF25				FF17	-	-
BF30				FF20	BUR-20	-
BF35				FF25	BUR-25	-
BF40				FF30	BUR-30	-
	NSB	KURODA	NSK			
	AK10	-	WBK10-01A			
	AK12	-	WBK12-01A			
	AK15	-	WBK15-01A			
	BK17	-	WBK17-01A			
	AK20	-	WBK20-01A			
	AK25	BSW25	WBK25-01A			
	AF10	-	WBK10S-01			
	AF12	-	WBK12S-01			
	AF15	-	WBK15S-01			
	BF17	-	WBK17S-01			
	AF20	-	WBK20S-01			
	-	-	WBK25S-01			

## N-TYPE 表面處理 無電解鍍（防鏽處理）

小型機器輕荷重用 For compact ball screw		
<b>AK系列</b> (方形固定側) Support Unit AK		
P02	AK-B 染黑	AK-N 無電解鍍
<b>AF系列</b> (方形支撐側) Support Unit AF		
P03	AF-B 染黑	AF-N 無電解鍍
<b>BK系列</b> (方形固定側) Support Unit BK		
P04	BK-B 染黑	BK-N 化鍍
<b>BF系列</b> (方形支撐側) Support Unit BF		
P05	BF-B 染黑	BF-N 無電解鍍
<b>EK系列</b> (凸形固定側) Support Unit EK		
P06	EK-B 染黑	EK-N 無電解鍍
<b>EF系列</b> (凸形支撐側) Support Unit EF		
P07	EF-B 染黑	EF-N 無電解鍍

小型機器輕荷重用 For compact ball screw		
<b>FK系列</b> (法蘭形固定側) Support Unit FK		
P08	FK-B 染黑	FK-N 無電解鍍
<b>FF系列</b> (法蘭形支撐側) Support Unit FF		
P09	FF-B 染黑	FF-N 無電解鍍
<b>AKE系列</b> (經濟方型固定側) Support Unit AKE		
P10	AKE-B 染黑	AKE-N 無電解鍍
<b>FKE系列</b> (經濟法蘭型固定側) Support Unit FKE		
P11	FKE-B 染黑	FKE-N 無電解鍍
<b>WBK-DF/DFD型</b> (高荷重支撐座) WBK-DF/DFD type support Unit		
P12	WBK-DF/DFD-B 染黑	WBK-DF/DFD-N 無電解鍍
<b>小型FK系列</b> FK05 ~ FK08 (法蘭形固定側) Support Unit FK		
P14	FK-B 染黑	FK-N 無電解鍍

建議軸端加工尺寸圖 P16~ P17

支撐座固定端軸向負荷參考表 P18

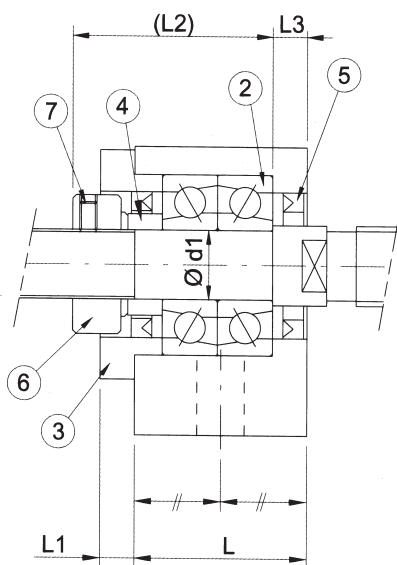
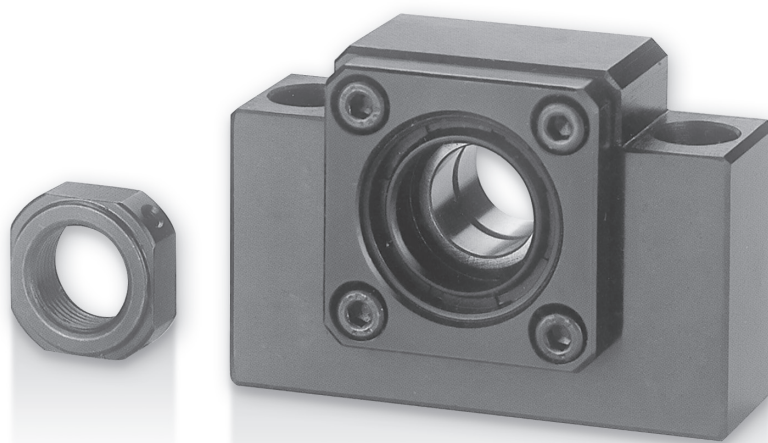
鎖固螺帽型號參考表 P19

安裝程序 P20

## AK系列（方形固定側）

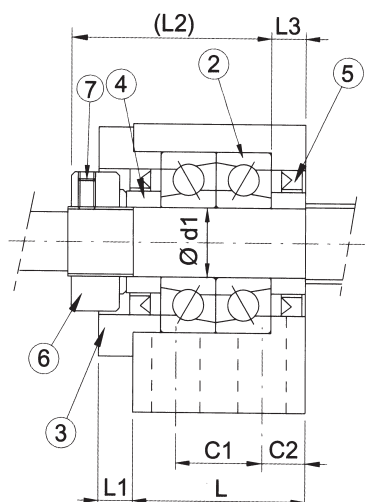
Support Unit AK  
(fixed-side rectangular type)

# AK

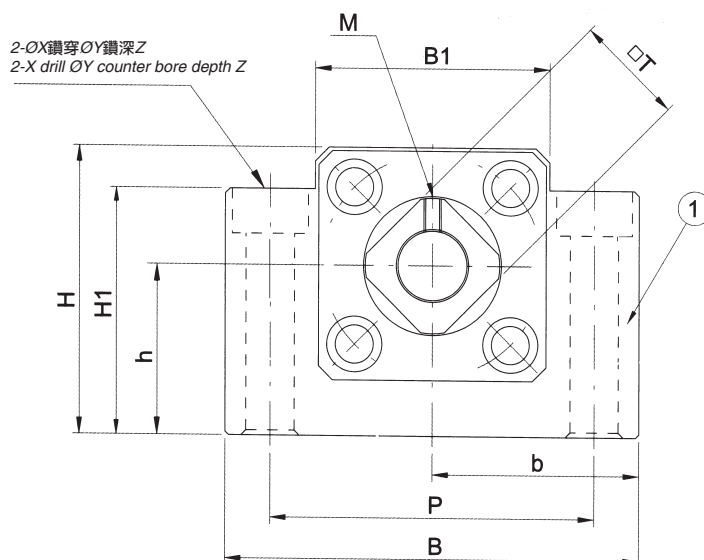


**AK10 ~ AK15**

編號/Part No.	部品名稱/Part name	數量/Qty
1	軸承座本體/Housing	1
2	軸承/Bearing	1組/1 set
3	壓板/Holding lid	1
4	套筒/Collar	2
5	油封/Seal	2
6	鎖固螺帽/Lock nut	1組/1 set
7	內六角止付螺絲附銅片 Hexagon socket-head Setscrew(with set piece)	2



**AK20 ~ AK25**

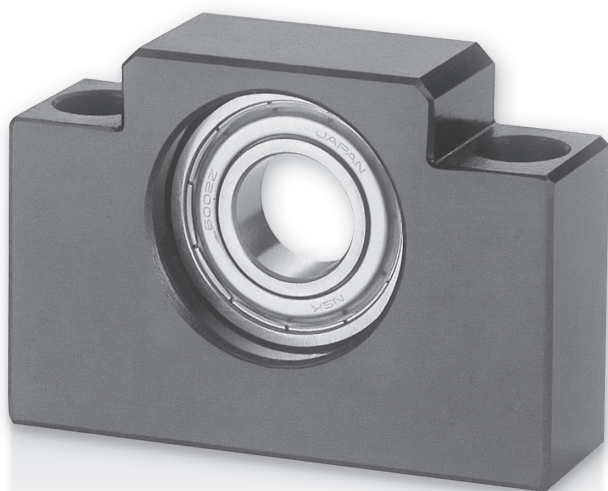


**AK10 ~ AK25**

單位 / Unit : mm

型號 Model No.	軸徑 Shaft diameter d1	L	L1	L2	L3	B	H	b ±0.02	h ±0.02	B1	H1	P	X	Y	Z	M	T	C1	C2
AK10	10	24	6	31.5	6	70	43	35	25	36	35	52	9	14	11	M4	16	-	-
AK12	12	24	6	31.5	6	70	43	35	25	36	35	52	9	14	11	M4	19	-	-
AK15	15	25	6	36	5	80	49	40	30	41	40	60	11	17	15	M4	22	-	-
AK20	20	42	10	50	10	95	58	47.5	30	56	45	75	11	17	15	M4	30	22	10
AK25	25	48	12	59	14	105	68	52.5	35	66	25	85	11			M5	35	30	9

接受表面特殊處理之訂製 Surface Special treatment is available.



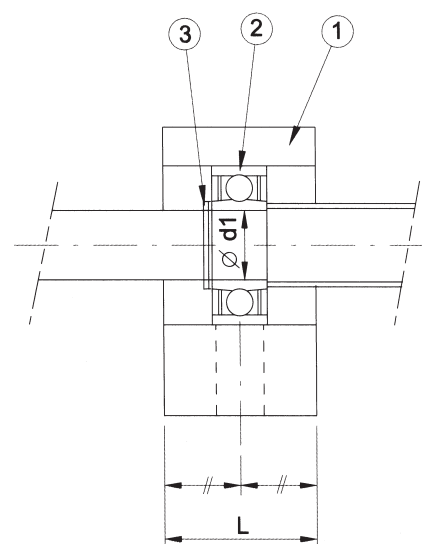
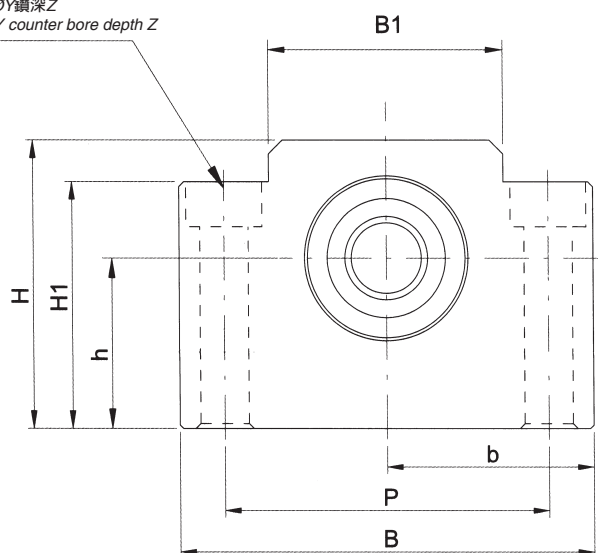
## AF系列（方形支撐側）

*Support Unit AF*  
(Supported-side rectangular type)

編號/Part No.	部品名稱/Part name	數量/Qty
1	軸承座本體/Housing	1
2	軸承/Bearing	1組/1 set
3	C型扣環/Snap ring	1

# AF

2-ØX鑽穿ØY鑽深Z  
2-X drill ØY counter bore depth Z



單位 / Unit : mm

型號 Model No.	軸徑 Shaft diameter d1	L	B	H	b ±0.02	h ±0.02	B1	H1	P	X	Y	Z	使用軸承 Bearing	使用C型扣環 Snap ring
AF10	8	20	70	43	35	25	36	35	52	9	14	11	608ZZ	S 8
AF12	10	20	70	43	35	25	36	35	52	9	14	11	6000ZZ	S 10
AF15	15	20	80	49	40	30	41	40	60	9	14	11	6002ZZ	S 15
AF20	20	26	95	58	47.5	30	56	45	75	11	17	15	6204ZZ	S 20
AF25	25	30	105	68	52.5	35	66	25	85	11			6205ZZ	S 25

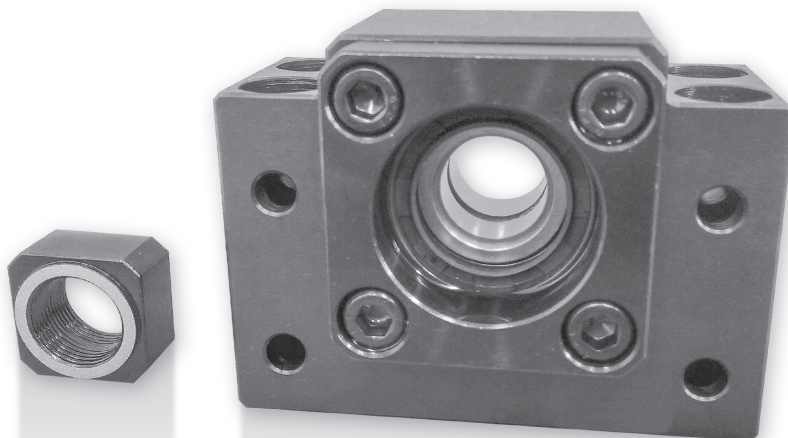
接受表面特殊處理之訂製 Surface Special treatment is available.



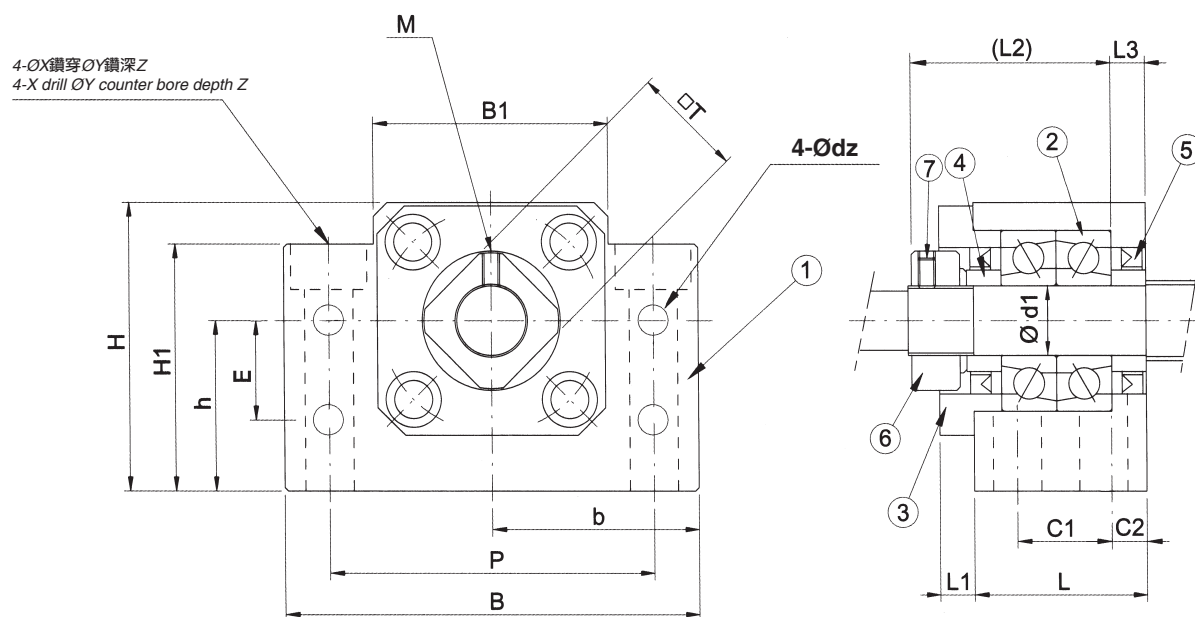
## BK系列（方形固定側）

**Support Unit BK**  
(fixed-side rectangular type)

編號/Part No.	部品名稱/Part name	數量/Qty
1	軸承座本體/Housing	1
2	軸承/Bearing	1組/1 set
3	壓板/Holding lid	1
4	套筒/Collar	2
5	油封/Seal	2
6	鎖固螺帽/Lock nut	1組/1 set
7	內六角止付螺絲附銅片 Hexagon socket-head Setscrew(with set piece)	2



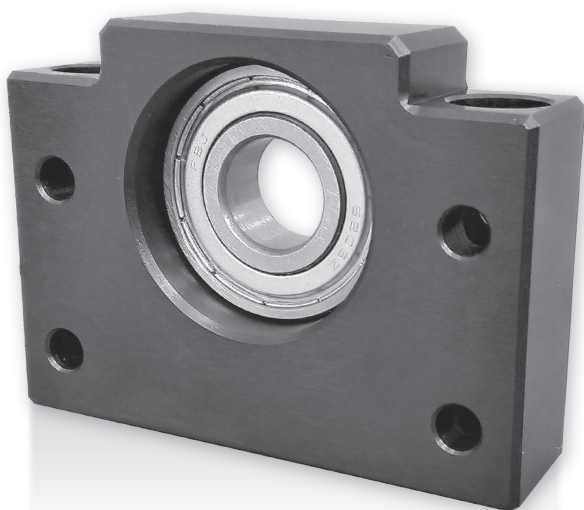
# BK



單位 / Unit : mm

型號 Model No.	軸徑 Shaft diameter d1	L	L1	L2	L3	B	H	b ±0.02	h ±0.02	B1	H1	P	C1	C2	X	Y	Z	M	T	E	dz
BK10	10	25	5	31.5	5	60	39	30	22	34	32.5	46	13	6	6.6	11	5	M4	16	15	5.5
BK12	12	25	5	31.5	5	60	43	30	25	34	32.5	46	13	6	6.6	11	1.5	M4	19	18	5.5
BK15	15	27	6	34	6	70	48	35	28	40	38	54	15	6	6.6	11	6.5	M4	22	18	5.5
BK17	17	35	9	44	7	86	64	43	39	50	55	68	19	8	9	14	8.5	M4	24	28	6.6
BK20	20	35	8	43	8	88	60	44	34	52	50	70	19	8	9	14	8.5	M4	30	22	6.6
BK25	25	42	12	54	9	106	80	53	48	64	70	85	22	10	11	17.5	11	M5	35	33	9
BK30	30	45	14	61	9	128	89	64	51	76	78	102	23	11	14	20	13	M6	40	33	11
BK35	35	50	14	67	12	140	96	70	52	88	79	114	26	12	14	20	13	M8	50	35	11
BK40	40	61	18	76	15	160	110	80	60	100	90	130	33	14	18	26	17	M8	50	37	14

接受表面特殊處理之訂製 Surface Special treatment is available.



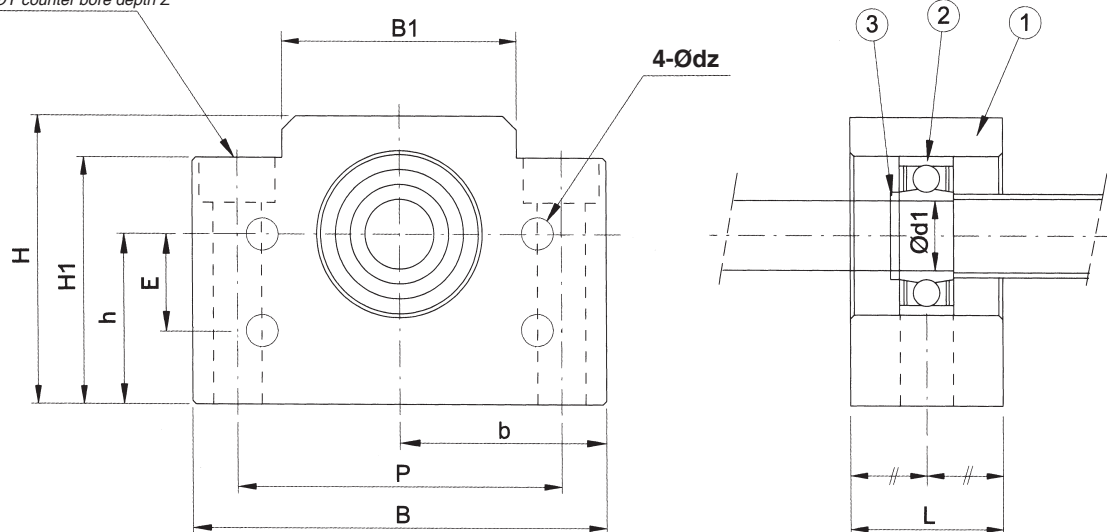
## BF系列（方形支撐側）

*Support Unit BF*  
(Supported-side rectangular type)

編號/Part No.	部品名稱/Part name	數量/Qty
1	軸承座本體/Housing	1
2	軸承/Bearing	1組/1 set
3	C型扣環/Snap ring	1

# BF

2-ØX鑽穿ØY鑽深Z  
2-X drill ØY counter bore depth Z



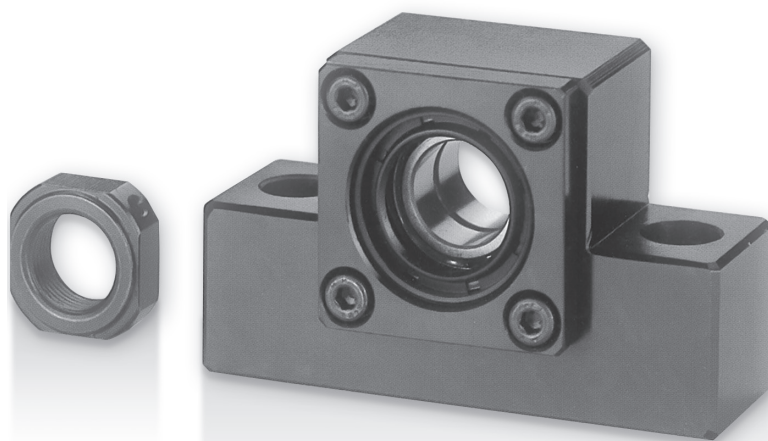
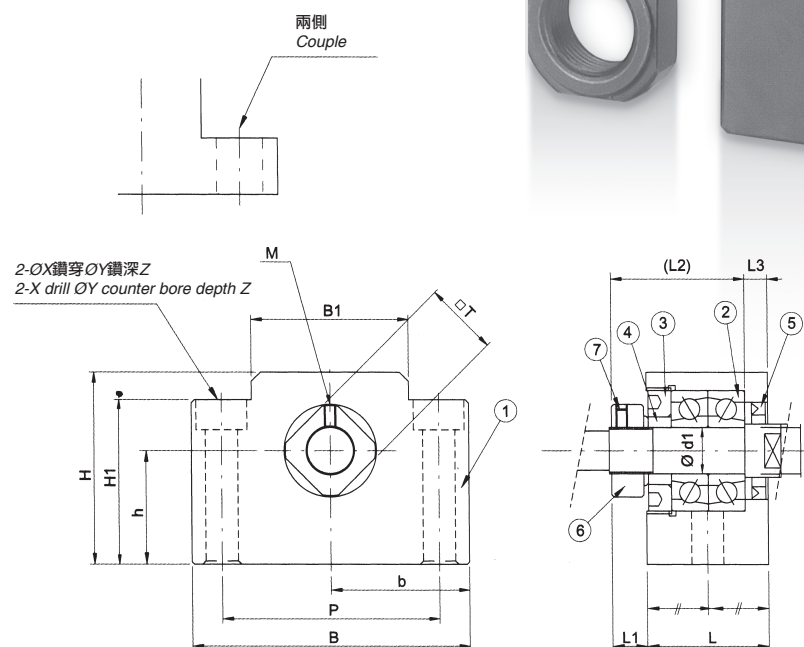
單位 / Unit : mm

型號 Model No.	軸徑 Shaft diameter d1	L	B	H	b ±0.02	h ±0.02	B1	H1	P	X	Y	Z	E	dz	使用軸承 Bearing	使用C型扣環 Snap ring
BF10	8	20	60	39	30	22	34	32.5	46	6.6	11	5	15	5.5	608ZZ	S 8
BF12	10	20	60	43	30	25	34	32.5	46	6.6	11	1.5	18	5.5	6000ZZ	S 10
BF15	15	20	70	48	35	28	40	38	54	6.6	11	6.5	18	5.5	6002ZZ	S 15
BF17	17	23	86	64	43	39	50	55	68	9	14	8.5	28	6.6	6203ZZ	S 17
BF20	20	26	88	60	44	34	52	50	70	9	14	8.5	22	6.6	6004ZZ	S 20
BF25	25	30	106	80	53	48	64	70	85	11	17.5	11	33	9	6205ZZ	S 25
BF30	30	32	128	89	64	51	76	78	102	14	20	13	33	11	6206ZZ	S 30
BF35	35	32	140	96	70	52	88	79	114	14	20	13	35	11	6207ZZ	S 35
BF40	40	37	160	110	80	60	100	90	130	18	26	17.5	37	14	6208ZZ	S 40

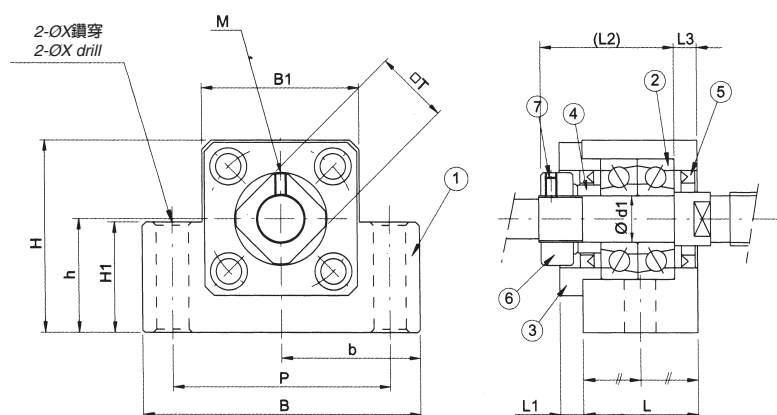
接受表面特殊處理之訂製 Surface Special treatment is available.

## EK系列（凸形固定側）

Support Unit EK  
(fixed-side rectangular type)



## EK10 ~ EK20



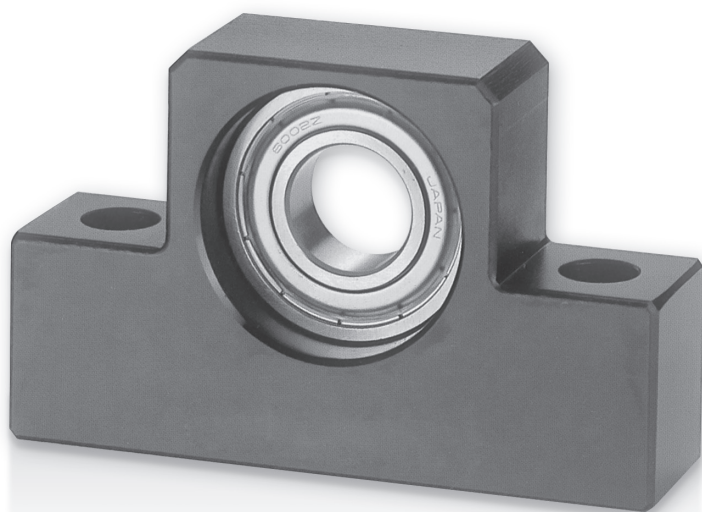
編號/Part No.	部品名稱/Part name	數量/Qty
1	軸承座本體/Housing	1
2	軸承/Bearing	1組/1 set
3	壓板/Holding lid	1
4	套筒/Collar	2
5	油封/Seal	1 (2)
6	鎖固螺帽/Lock nut	1
7	內六角止付螺絲附銅片 Hexagon socket-head Setscrew(with set piece)	2

單位 / Unit : mm

型號 Model No.	軸徑 Shaft diameter d1	L	L1	L2	L3	B	H	b	h	B1	H1	P	X	Y	Z	M	T
EK06	6	20	5.5	22	3.5	42	25	21	13	18	20	30	5.5	9.5	11	M3	12
EK08	8	23	7	26	4	52	32	26	17	25	26	38	6.6	11	12	M3	14
EK10	10	24	6	31.5	6	70	43	35	25	36	24	52	9	-	-	M4	16
EK12	12	24	6	31.5	6	70	43	35	25	36	24	52	9	-	-	M4	19
EK15	15	25	6	36	5	80	49	40	30	41	25	60	11	-	-	M4	22
EK20	20	42	10	50	10	95	58	47.5	30	56	25	75	11	-	-	M4	30

接受表面特殊處理之訂製 Surface Special treatment is available.





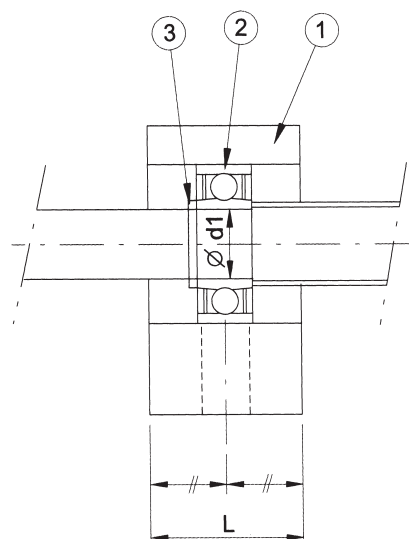
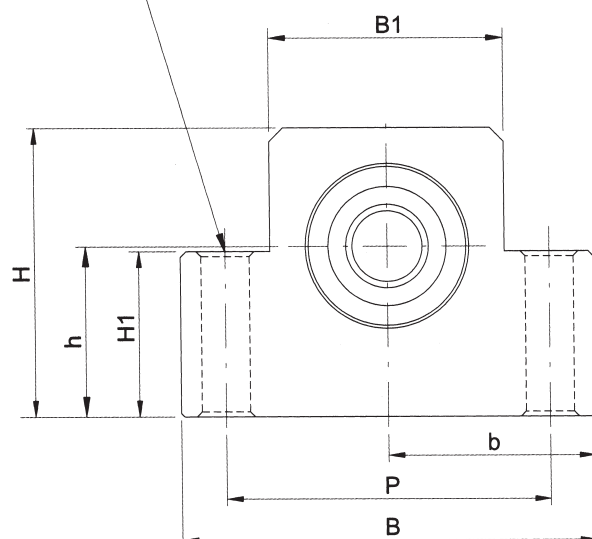
## EF系列（凸形支撐側）

*Support Unit EF*  
(Supported-side rectangular type)

編號/Part No.	部品名稱/Part name	數量/Qty
1	軸承座本體/Housing	1
2	軸承/Bearing	1組/1 set
3	C型扣環/Snap ring	1

# EF

2-ØX鑽穿ØY鑽深Z  
2-X drill ØY counter bore depth Z



單位 / Unit : mm

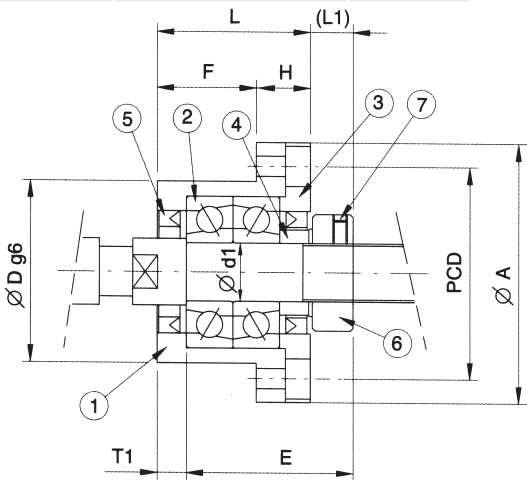
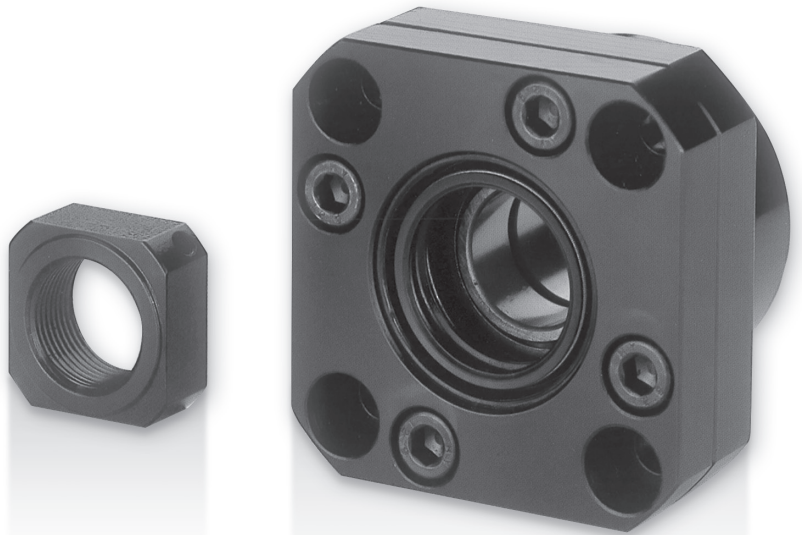
型號 Model No.	軸徑 Shaft diameter d1	L	B	H	b ±0.02	h ±0.02	B1	H1	P	X	Y	Z	使用軸承 Bearing	使用C型扣環 Snap ring
EF06	6	12	42	25	21	13	18	20	30	5.5	9.5	11	606ZZ	S 6
EF08	6	14	52	32	26	17	25	26	38	6.6	11	12	606ZZ	S 6
EF10	8	20	70	43	35	25	36	24	52	9	-	-	608ZZ	S 8
EF12	10	20	70	43	35	25	36	24	52	9	-	-	6000ZZ	S 10
EF15	15	20	80	49	40	30	41	25	60	9	-	-	6002ZZ	S 15
EF20	20	26	95	58	47.5	30	56	25	75	11	-	-	6204ZZ	S 20

接受表面特殊處理之訂製 Surface Special treatment is available.

FK系列（法蘭形固定側）

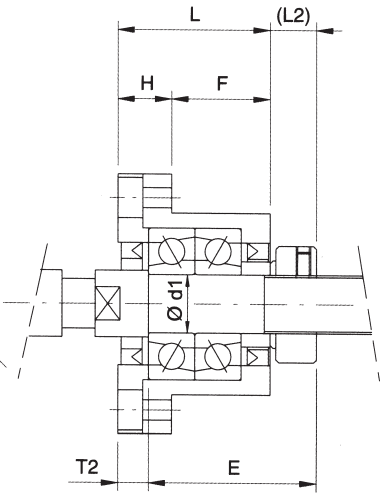
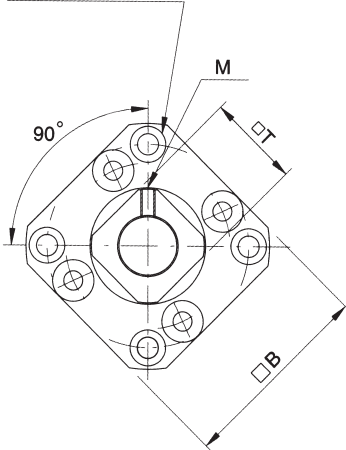
Support Unit FK  
(fixed-side rectangular type)

編號/Part No.	部品名稱/Part name	數量/Qty
1	軸承座本體/Housing	1
2	軸承/Bearing	1組/1 set
3	壓板/Holding lid	1
4	套筒/Collar	2
5	油封/Seal	2
6	鎖固螺帽/Lock nut	1組/1 set
7	內六角止付螺絲附銅片 Hexagon socket-head Setscrew(with set piece)	2



裝置方法A / Mounting method A

4-ØX鑽穿ØY鑽深Z  
4-X drill ØY counter bore depth Z



裝置方法B / Mounting method B

單位 / Unit : mm

型號 Model No.	軸徑 Shaft diameter d1	L	H	F	E	Dg6		A	PCD	B	裝置方法A Mounting method A		裝置方法B Mounting method B		X	Y	Z	M	T
											L1	T1	L2	T2					
FK06	6	20	7	13	22	22	-0.007 -0.02	35	28	28	5.5	3.5	8.5	6.5	3.4	6	3	M3	12
FK08	8	23	9	14	26	28	-0.007 -0.02	43	35	35	7	4	10	7	3.4	6	4	M3	14
FK10	10	27	10	17	29.5	34	-0.009 -0.025	52	42	42	7.5	5	8.5	6	4.5	8	4	M4	16
FK12	12	27	10	17	29.5	36	-0.009 -0.025	54	44	44	7.5	5	8.5	6	4.5	8	4	M4	19
FK15	15	32	15	17	36	40	-0.009 -0.025	63	50	52	10	6	12	8	5.5	9.5	6	M4	22
FK17	17	45	22	23	47	50	-0.009 -0.025	77	62	61	11	9	14	12	6.6	11	10	M4	24
FK20	20	52	22	30	50	57	-0.010 -0.029	85	70	68	8	10	12	14	6.6	11	10	M4	30
FK25	25	57	27	30	60	63	-0.010 -0.029	98	80	79	13	10	20	17	9	14	13	M5	35
FK30	30	62	30	32	61	75	-0.010 -0.029	117	95	93	11	12	17	18	11	17	15	M6	40

接受表面特殊處理之訂製 Surface Special treatment is available.

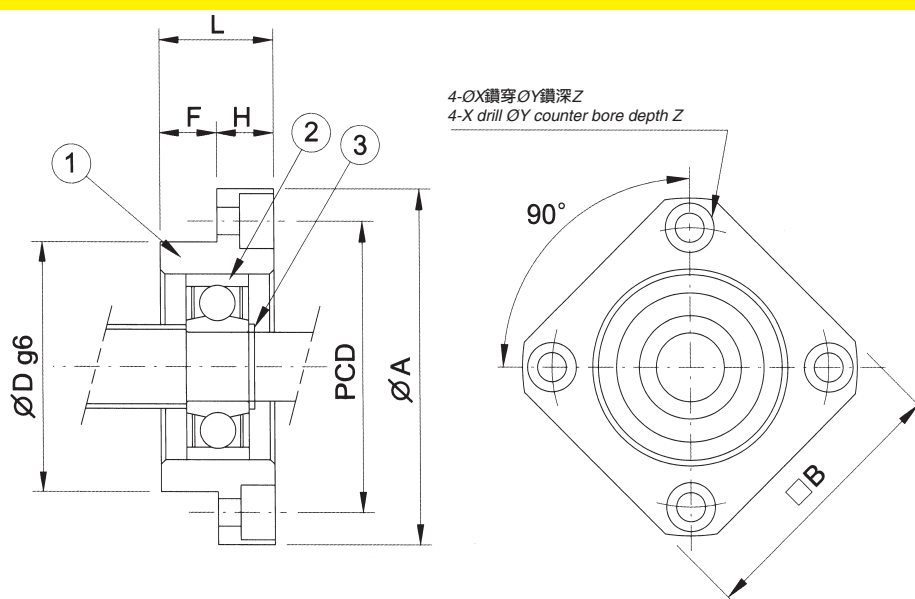


## FF系列（法蘭形支撐側）

Support Unit FF  
(Supported-side round type)

編號/Part No.	部品名稱/Part name	數量/Qty
1	軸承座本體/Housing	1
2	軸承/Bearing	1組/1 set
3	C型扣環/Snap ring	1

# FF



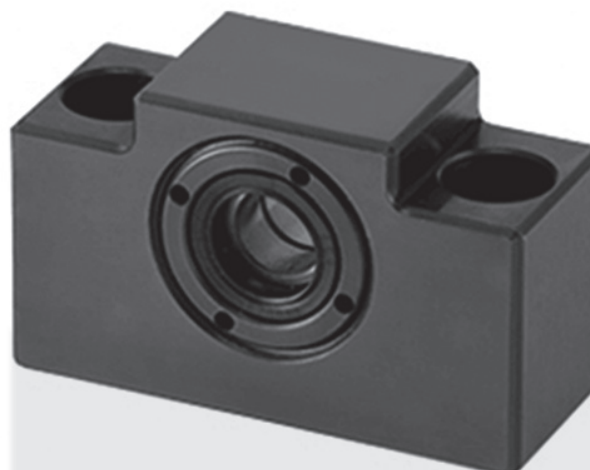
單位 / Unit : mm

型號 Model No.	軸徑 Shaft diameter d1	L	H	F	Dg6		A	PCD	B	X	Y	Z	使用軸承 Bearing	使用C型扣環 Snap ring
FF06	6	10	6	4	22	-0.007 -0.02	36	28	28	3.4	6	4	606ZZ	S 6
FF10	8	12	7	5	28	-0.007 -0.02	43	35	35	3.4	6	4	608ZZ	S 8
FF12	10	15	7	8	34	-0.009 -0.025	52	42	42	4.5	8	4	6000ZZ	S 10
FF15	15	17	9	8	40	-0.009 -0.025	63	50	52	5.5	9.5	5.5	6002ZZ	S 15
FF17	17	20	11	9	50	-0.009 -0.025	77	62	61	6.6	11	6.5	6203ZZ	S 17
FF20	20	20	11	9	57	-0.010 -0.029	85	70	68	6.6	11	6.5	6204ZZ	S 20
FF25	25	24	14	10	63	-0.010 -0.029	98	80	79	9	14	8.5	6205ZZ	S 25
FF30	30	27	18	9	75	-0.010 -0.029	117	95	93	11	17.5	11	6206ZZ	S 30

接受表面特殊處理之訂製 Surface Special treatment is available.

## AKE系列（經濟方型固定側）

### Support Unit AKE (fixed-side rectangular economy type)



編號/Part No.	部品名稱/Part name	數量/Qty
1	軸承座本體/Housing	1
2	徑向配對軸承/Bearing	1組/1 set
3	螺栓壓板/Screw Holding Lid	1
4	套筒/Collar	2
5	油封/Seal	1
6	鎖固螺帽/Lock nut	1組/1 set
7	內六角止付螺絲附銅片 Hexagon socket-head Setscrew(with set piece)	1

## AKE

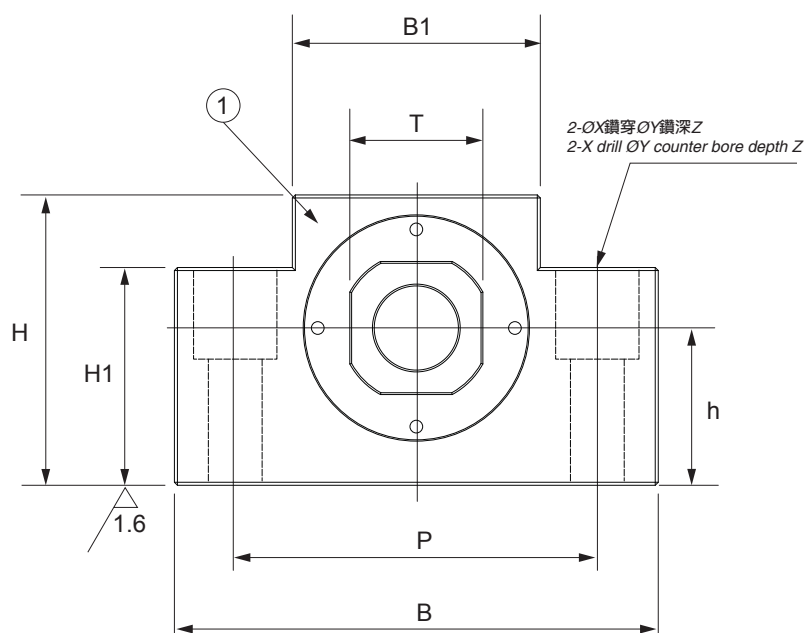
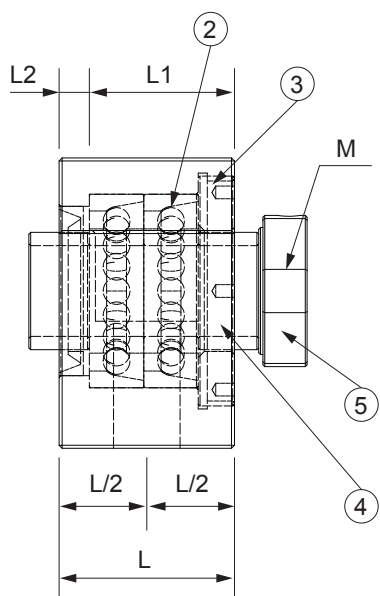
※ ①②③⑤ 是一體的，請勿將其分解。

①②③⑤ as a whole, do not take them apart.

※ 已施加過預壓，使其能承受推力荷重。

請在旋轉數 Max3,000rpm 以內使用。

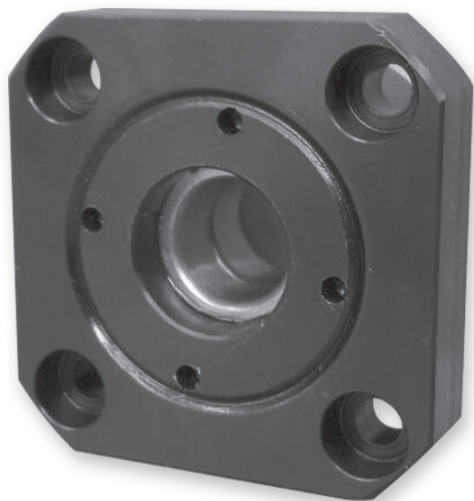
Max. 3,000 r.p.m with preload bearings.



單位 / Unit : mm

型號 Model No.	軸徑 Shaft diameter d1	L	L1	L2	H	B1	H1	B	h	P	X	Y	Z	M (細螺紋)	T
AKE10	10	27	31.5	6	43	36	35	70	25	52	9	14	11	M10x1.0	16
AKE12	12	27	31.5	6	43	36	35	70	25	52	9	14	11	M12x1.0	19
AKE15	15	29	36	5	49	41	40	80	30	60	11	17	15	M15x1.0	22

接受表面特殊處理之訂製 Surface Special treatment is available.



## FKE系列（經濟法蘭型固定側）

*Support Unit FKE*  
(fixed-side rectangular economy type)

編號/Part No.	部品名稱/Part name	數量/Qty
1	軸承座本體/Housing	1
2	徑向配對軸承/Bearing	1組/1 set
3	螺栓壓板/Screw Holding Lid	1
4	套筒/Collar	2
5	油封/Seal	1
6	鎖固螺帽/Lock nut	1組/1 set
7	內六角止付螺絲附銅片 Hexagon socket-head Setscrew(with set piece)	1

## FKE

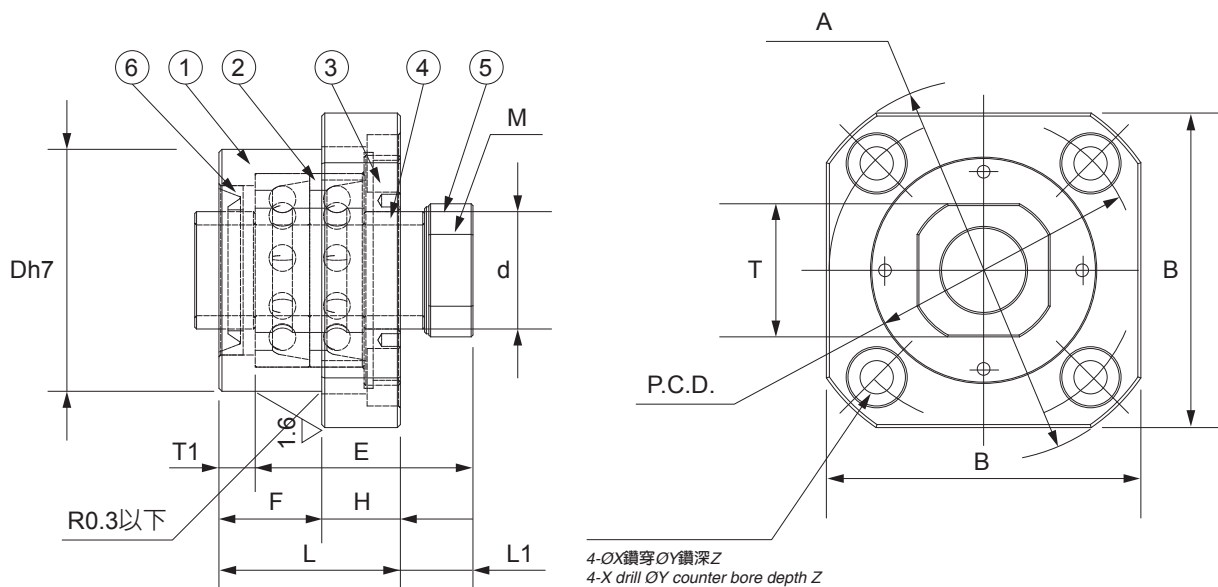
※ ①②③⑤ 是一體的，請勿將其分解。

①②③⑤ as a whole, do not take them apart.

※ 已施加過預壓，使其能承受推力荷重。

請在旋轉數 Max3,000rpm 以內使用。

Max. 3,000 r.p.m with preload bearings.



單位 / Unit : mm

型號 Model No.	軸徑 Shaft diameter d1	L	H	F	E	Dh7	A	PCD	B	L1	T1	X	Y	Z	M (細螺紋)	T
FKE05	5	16.5	6	10.5	18.5	20	34	26	26	5.5	3.5	3.4	6	3	M5x0.5	11
FKE06	6	20	7	13	22	22	36	28	28	5.5	3.5	3.4	6	3.5	M6x0.75	12
FKE08	8	23	9	14	26	28	43	35	35	7	4	3.4	6	4	M8x1.0	14
FKE10	10	26	10	16	29.5	34	52	42	42	7.5	5	4.5	8	4	M10x1.0	16
FKE12	12	26	10	16	29.5	36	54	44	44	7.5	5	4.5	8	4	M12x1.0	19
FKE15	15	30	13	17	36	40	63	50	52	10	6	5.5	9.5	6	M15x1.0	22

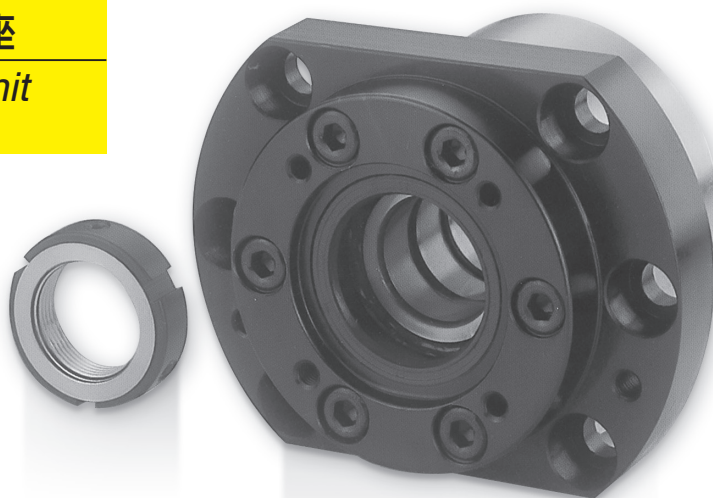
接受表面特殊處理之訂製 Surface Special treatment is available.



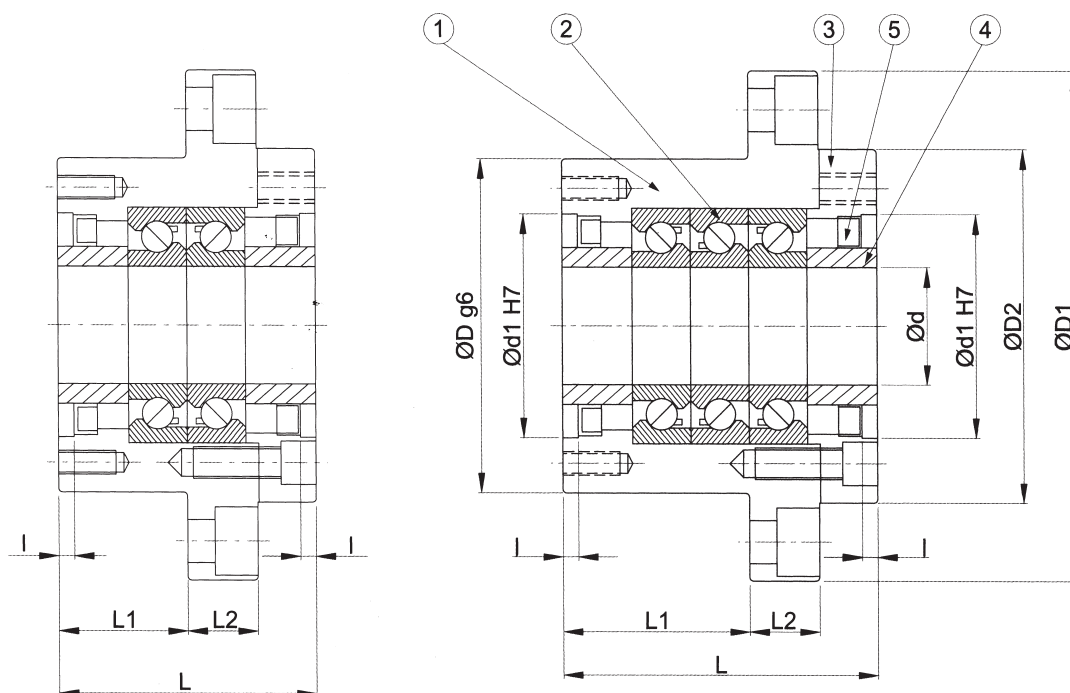
## WBK-DF/DFD型高荷重支撐座

WBK-DF/DFD type support Unit  
(heavy-load)

編號/Part No.	部品名稱/Part name	數量/Qty
1	軸承座本體/Housing	1
2	軸承/Bearing	1組/1 set
3	壓板/Holding lid	1
4	套筒/Collar	2
5	油封/Seal	2



## WBK-DF/DFD

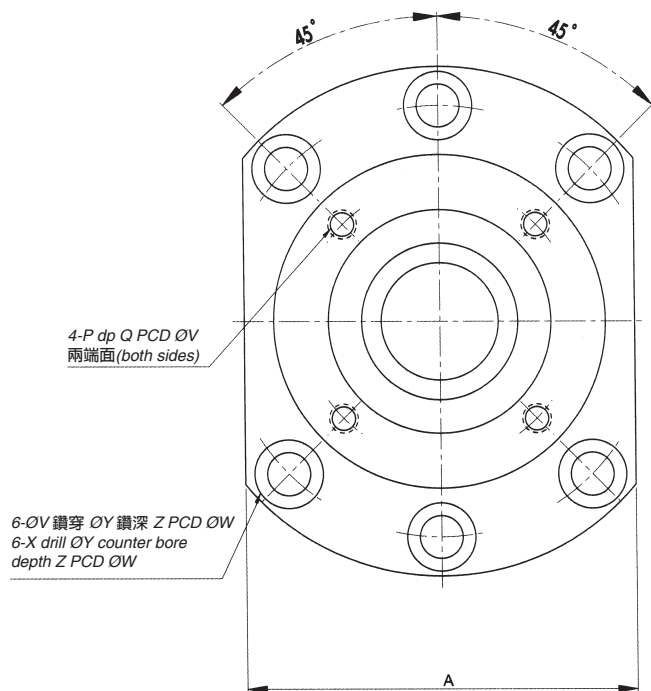


DF組合

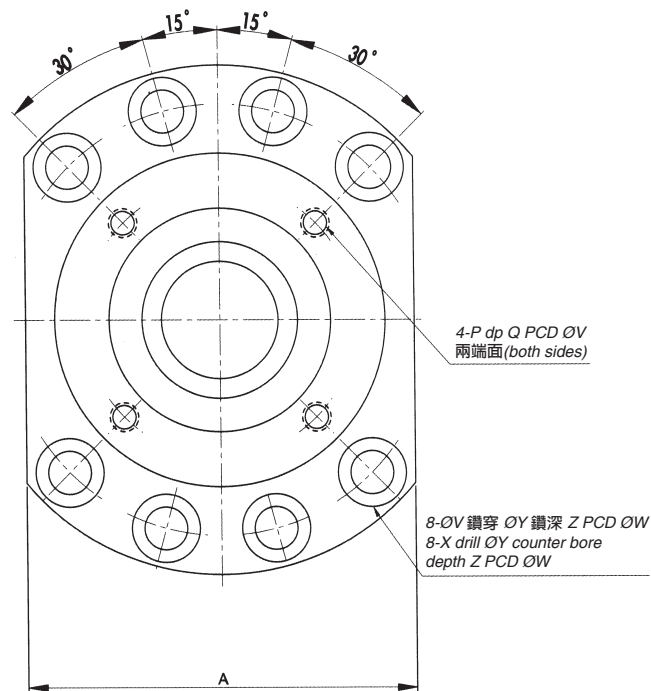
DFD組合

單位 / Unit : mm

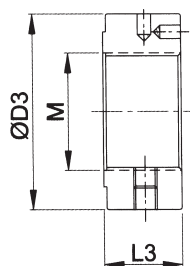
型號 Model No.	d	D	D1	D2	L	L1	L2	A	W	X	Y	Z	d1	I	V	P	Q
WBK 20DF	20	70	106	72	60	32	15	80	88	9	14	8.5	45	3	58	M5	10
WBK 25DF	25	85	130	90	66	33	18	100	110	11	17.5	11	57	4	70	M6	12
WBK 25DFD	25	85	130	90	81	48	18	100	110	11	17.5	11	57	4	70	M6	12
WBK 30DF	30	85	130	90	66	33	18	100	110	11	17.5	11	57	4	70	M6	12
WBK 30DFD	30	85	130	90	81	48	18	100	110	11	17.5	11	57	4	70	M6	12
WBK 35DF	35	95	142	102	66	33	18	106	121	11	17.5	11	69	4	80	M6	12
WBK 35DFD	35	95	142	102	81	48	18	106	121	11	17.5	11	69	4	80	M6	12
WBK 40DF	40	95	142	102	66	33	18	106	121	11	17.5	11	68	4	80	M6	12
WBK 40DFD	40	95	142	102	81	48	18	106	121	11	17.5	11	68	4	80	M6	12



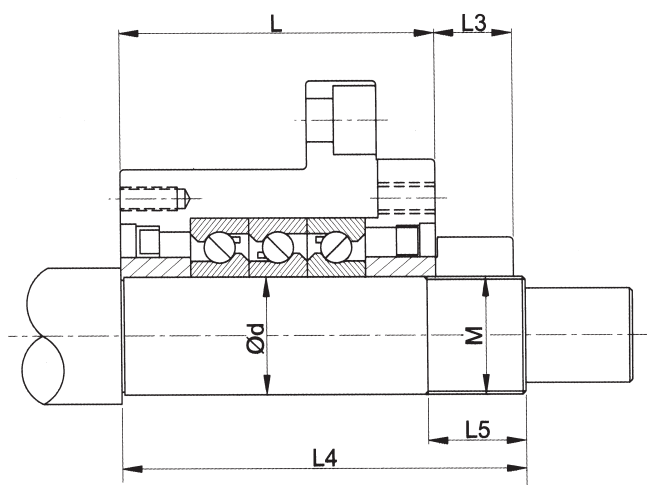
軸徑  $\text{Ø}d \leq 30$   
Shaft diameter  $\text{Ø}d \leq 30$



軸徑  $\text{Ø}d \leq 35$   
Shaft diameter  $\text{Ø}d \leq 35$



鎖固螺帽  
Lock nut



軸端尺寸  
Dimensions of shaft end

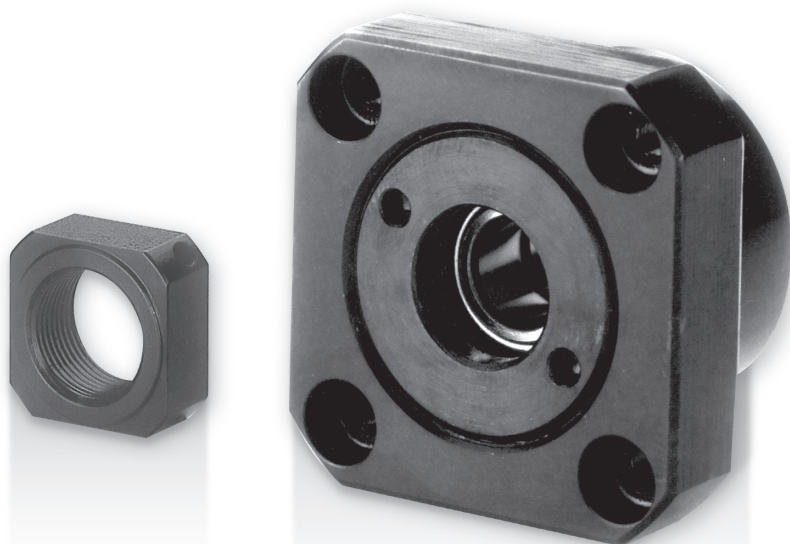
單位 / Unit : mm

型號 Model No.	基本動定格荷重 Basic dynamic load rating Ca(kgf)	界限荷重 Permissible axial load (N)	預壓荷重 Preload (N)	軸方向剛性 Axial rigidity (N/um)	起動力矩 Starting torque (N-cm)	鎖固螺帽 Lock nut			重量 Weight Kgs	軸端尺寸 Dimensions of shaft end		
						M	D3	L3		d	L4	L5
WBK 20DF	21900	26600	2150	750	14.0	M20x1	40	18	1.9	20	81	23
WBK 25DF	28500	40500	3150	1000	23.0	M25x1.5	45	20	3.1	25	89	26
WBK 25DFD	46500	81500	4300	1470	31.0	M25x1.5	45	20	3.4	25	104	26
WBK 30DF	29200	43000	3350	1030	24.0	M30x1.5	50	20	3.0	30	89	26
WBK 30DFD	47500	86000	4500	1520	33.0	M30x1.5	50	20	3.3	30	104	26
WBK 35DF	31000	50000	3800	1180	28.0	M35x1.5	55	22	3.4	35	92	30
WBK 35DFD	50500	100000	5200	1710	37.0	M35x1.5	55	22	4.3	35	107	30
WBK 40DF	31500	52000	3900	1230	28.0	M40x1.5	60	22	3.6	40	92	30
WBK 40DFD	51500	104000	5300	1810	38.0	M40x1.5	60	22	4.2	40	107	30

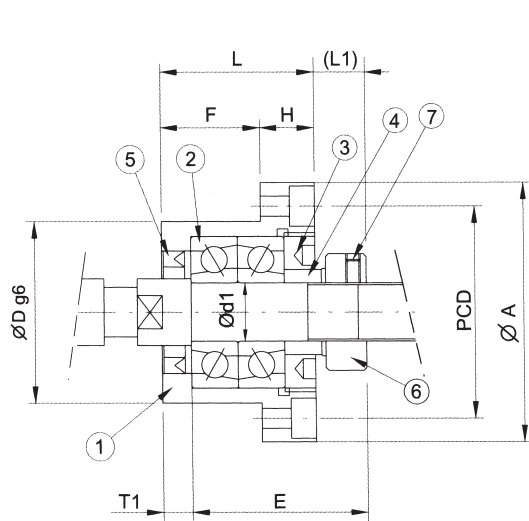
## FK系列（法蘭形固定側）

Support Unit FK  
(fixed-side rectangular type)

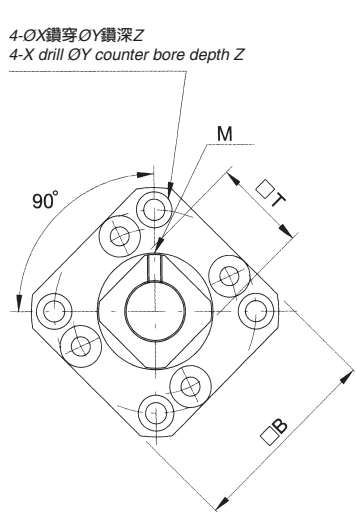
編號/Part No.	部品名稱/Part name	數量/Qty
1	軸承座本體/Housing	1
2	軸承/Bearing	1組/1 set
3	壓板/Holding lid	1
4	套筒/Collar	2
5	油封/Seal	2
6	鎖固螺帽/Lock nut	1組/1 set
7	內六角止付螺絲附銅片 Hexagon socket-head Setscrew(with set piece)	2



## FK05 ~ FK08



裝置方法A / Mounting method A



裝置方法B / Mounting method B

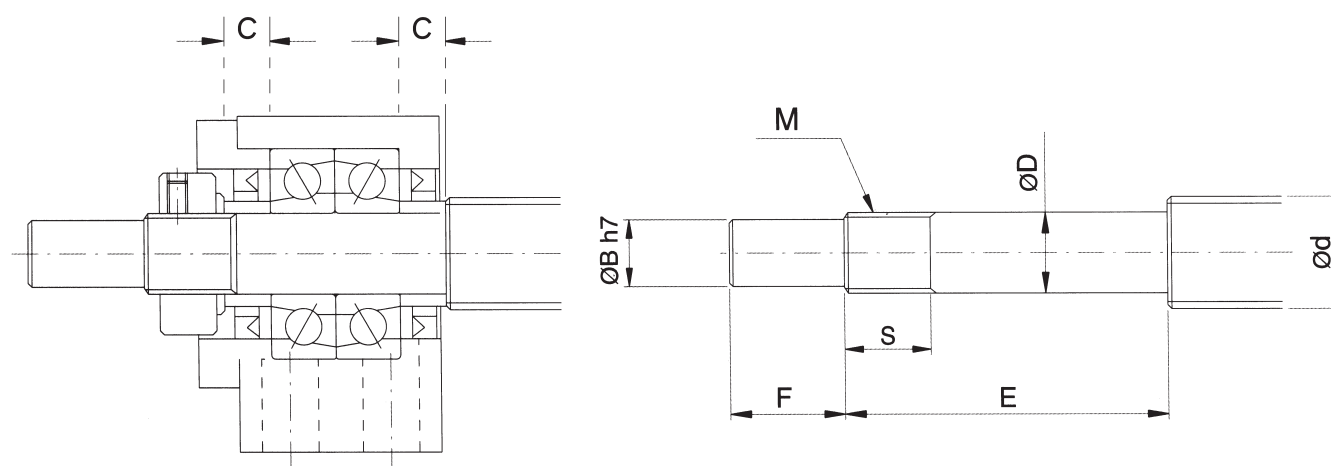
單位 / Unit : mm

型號 Model No.	軸徑 Shaft diameter d	L	H	F	E	Dg6		A	PCD	B	裝置方法A Mounting method A		裝置方法B Mounting method B		X	Y	Z	M	T
											L1	T1	L2	T2					
FK05	5	16.5	6	10.5	18.5	20	-0.007 -0.02	34	26	26	5.5	3.5	7	5	3.4	6.5	3	M2.6	11
FK06	6	20	7	13	22	22	-0.007 -0.02	35	28	28	5.5	3.5	8.5	6.5	3.4	6	3	M3	12
FK08	8	23	9	14	26	28	-0.007 -0.02	43	35	35	7	4	10	7	3.4	6	4	M3	14

接受表面特殊處理之訂製 Surface Special treatment is available.

## 建議軸端加工尺寸（固定側）BK型

Recommended shaft end shape(Fixed-side)  
for Support Units types

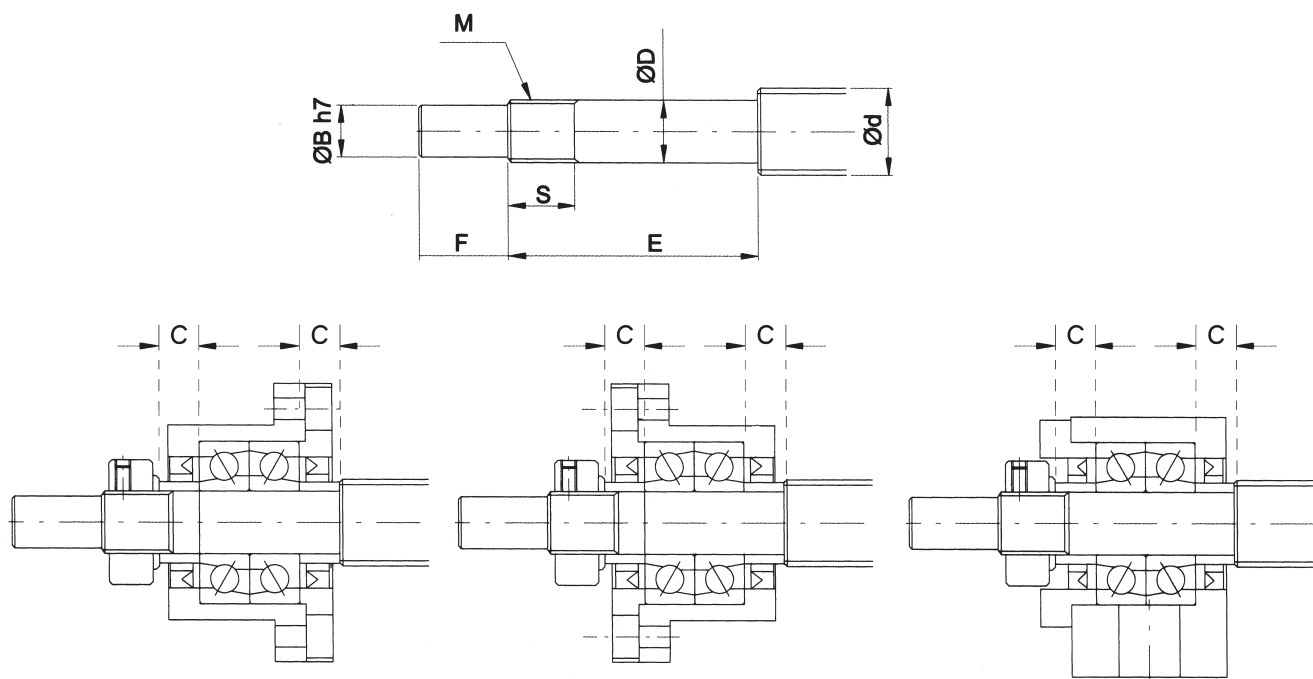


BK型  
Type BK

單位 / Unit : mm

型號 Support unit model No.	滾珠螺桿軸外徑 Ballscrew shaft OD	軸端部外徑 Shaft support portion OD					公稱螺紋 Metric screw thread		套筒長度 Metric screw thread
BK型 Type BK	d	D		B	E	F	M	S	C
BK10	12/14/15	10	-0.005 -0.012	8	36	15	M10X1	16	5.5
BK12	14/15/16	12	-0.005 -0.012	10	36	15	M12X1	14	5.5
BK15	18/20	15	-0.005 -0.012	12	40	20	M15X1	12	6
BK17	20/25	17	-0.005 -0.014	15	53	23	M17X1	17	7
BK20	25/28	20	-0.005 -0.014	17	53	25	M20X1	15	8
BK25	32/36	25	-0.005 -0.014	20	65	30	M25X1.5	18	9
BK30	36/40	30	-0.005 -0.015	25	72	38	M30X1.5	25	9
BK35	45	35	-0.005 -0.015	30	81	45	M35X1.5	28	12
BK40	50	40	-0.005 -0.015	35	93	50	M40X1.5	35	15

**建議軸端加工尺寸（固定側）FK,EK,AK型**  
**Recommended shaft end shape(Fixed-side)**  
**for Support Units types FK,EK,AK**



**FK 型**  
Type FK

**FK 型**  
Type FK

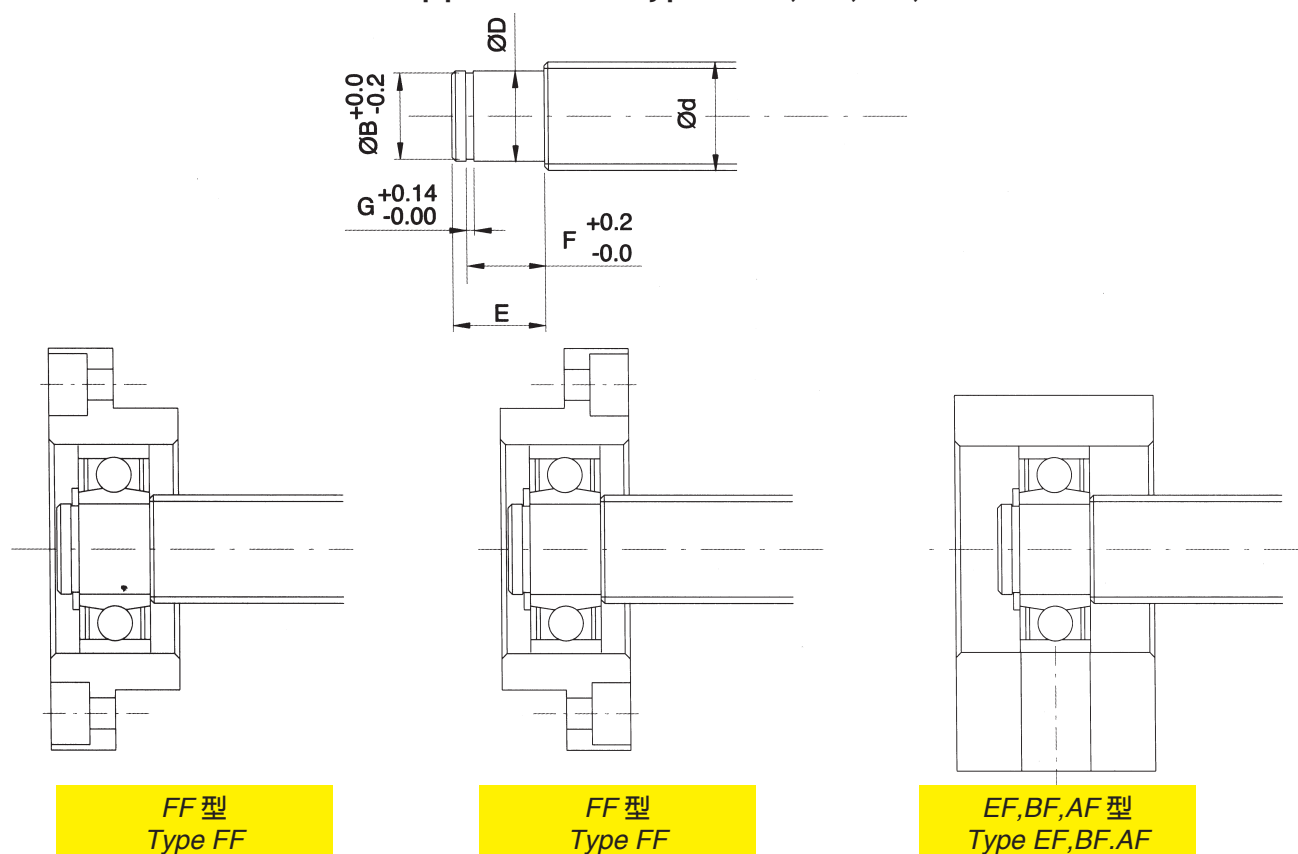
**EK,AK 型**  
Type EK,AK

單位 / Unit : mm

型號 Support unit model No.					滾珠螺桿軸外徑 Ballscrew shaft OD	軸端部外徑 Shaft support portion OD						公稱螺紋 Metric screw thread	套筒長度 Metric screw thread
FK型 Type FK	FKE型 Type FKE	EK型 Type EK	AK型 Type AK	AKE型 Type AKE	d	D		B	E	F	M	S	C
FK05	FKE05	EK05	-	-	8	5	-0.005 -0.012	4	25	6	M5X0.5	7	3.5
FK06	FKE06	EK06	-	-	8	6	-0.005 -0.012	4	28	8	M6X0.75	8	5
FK08	FKE08	EK08	-	-	10/12	8	-0.005 -0.012	6	32	9	M8X1	10	5.5
FK10	FKE10	EK10	AK10	AKE10	12/14/15	10	-0.005 -0.012	8	36	15	M10X1	11	5.5
FK12	FKE12	EK12	AK12	AKE12	14/15/16	12	-0.005 -0.014	10	36	15	M12X1	11	5.5
FK15	FKE15	EK15	AK15	AKE15	18/20	15	-0.005 -0.014	12	47	20	M15X1	13	10
FK17	-	-	-	-	20/25	17	-0.005 -0.014	15	58	23	M17X1	15	10
FK20	-	EK20	AK20	-	25/28/30	20	-0.005 -0.014	17	62	25	M20X1	17	11
FK25	-	-	AK25	-	30/32/36	25	-0.005 -0.014	20	76	30	M25X1.5	20	15
FK30	-	-	-	-	36/40	30	-0.005 -0.015	25	72	38	M30X1.5	25	9



## 建議軸端加工尺寸 (固定側) FF,EF,BF,AF型

Recommended shaft end shape(Fixed-side)  
for Support Units types FF,EF,BF,AF

單位 / Unit : mm

型號 Support unit model No.				滾珠螺桿軸外徑 Ball screw shaft OD	軸端部外徑 Shaft support portion OD					
FF型 Type FF	EF型 Type EF	BF型 Type BF	AF型 Type AF	$d$	$D$		$E$	$B$	$F$	$G$
FF06	EF06	-	-	8	6	$-0.005$ $-0.012$	9	5.7	6.8	0.8
-	EF08	-	-	10	6	$-0.005$ $-0.012$	9	5.7	6.8	0.8
FF10	EF10	BF10	AF10	12/14/15	8	$-0.005$ $-0.012$	10	7.6	7.9	0.9
FF12	EF12	BF12	AF12	14/15/16	10	$-0.005$ $-0.012$	11	9.6	9.15	1.15
FF15	EF15	BF15	AF15	18/20	15	$-0.005$ $-0.014$	13	14.3	10.15	1.15
FF17	-	BF17	-	20/25	17	$-0.005$ $-0.014$	16	16.2	13.15	1.15
FF20	EF20	(BF20)Note	AF20	25/28/30	20	$-0.005$ $-0.014$	19(16)	19	15.35(13.35)	1.35
FF25	-	BF25	AF25	30/32/36	25	$-0.005$ $-0.014$	20	23.9	16.35	1.35
FF30	-	BF30	-	36/40	30	$-0.005$ $-0.015$	21	28.6	17.75	1.75
-	-	BF35	-	40/45	35	$-0.005$ $-0.015$	22	33	18.75	1.75
-	-	BF40	-	50	40	$-0.005$ $-0.015$	23	38	19.75	1.95

### 支撐座固定端軸向負荷參考表

Reference of Axial load of fixed-side type support units

支撐座型號 Model No.		軸承 Bearing	靜負荷 Static load (Kgf)	軸向負荷 Attowable Axial load (Kgf)	極限轉速 Lirriting Rpm (RPM)
FK06	EK06	706C	93	74	
FK08	EK08	708A	129	103	
BK10	AK10	7000A	239	195	27105
FK10	EK10				
BK12	AK12	7001A	276	217	24375
FK12	EK12				
BK15	AK15	7002A	321	240	20800
FK15	EK15				
BK17	FK17	7203A	556	413	17160
		7203B	523	490	11798
BK20		7004A	622	428	15730
	AK20	7204A	770	587	14560
FK20	EK20	7204B	710	691	10625
BK25	AK25	7205A	964	709	12675
FK25		7205B	881	820	8980
BK30	FK30	7206A	1388	939	10660
		7206B	1268	1082	7570
BK35		7207B	1714	1466	6400
BK40		7208B	2145	1834	5700

**鎖固螺帽型號參考表**  
Reference of Lock nut type

編號 Order Coding	型號 Model No.	表面處理 Surface treatment	鎖緊扭矩 MAX Torque (kgf-cm)	防鬆扭矩 Setscrew MAX Torque (kgf-cm)
RN06	M6*P0.75	染黑 Black Oxide	25	6(M3)
RN06_N		化學鍍 Electroless Nickel Plating		
RN08	M8*P1.0	染黑 Black Oxide	50	6(M3)
RN08_N		化學鍍 Electroless Nickel Plating		
RN10	M10*P1.0	染黑 Black Oxide	95	6(M4)
RN10_N		化學鍍 Electroless Nickel Plating		
RN12	M12*P1.0	染黑 Black Oxide	140	15(M4)
RN12_N		化學鍍 Electroless Nickel Plating		
RN15	M15*P1.0	染黑 Black Oxide	240	15(M4)
RN15_N		化學鍍 Electroless Nickel Plating		
RN17	M17*P1.0	染黑 Black Oxide	315	15(M4)
RN17_N		化學鍍 Electroless Nickel Plating		
RN20	M20*P1.0	染黑 Black Oxide	480	15(M4)
RN20_N		化學鍍 Electroless Nickel Plating		
RN25	M25*P1.5	染黑 Black Oxide	860	50(M6)
RN25_N		化學鍍 Electroless Nickel Plating		
RN30	M30*P1.5	染黑 Black Oxide	1280	50(M6)
RN30_N		化學鍍 Electroless Nickel Plating		
RN40	M40*P1.5	染黑 Black Oxide	3000	50(M6)
RN40_N		化學鍍 Electroless Nickel Plating		

## 安裝程序

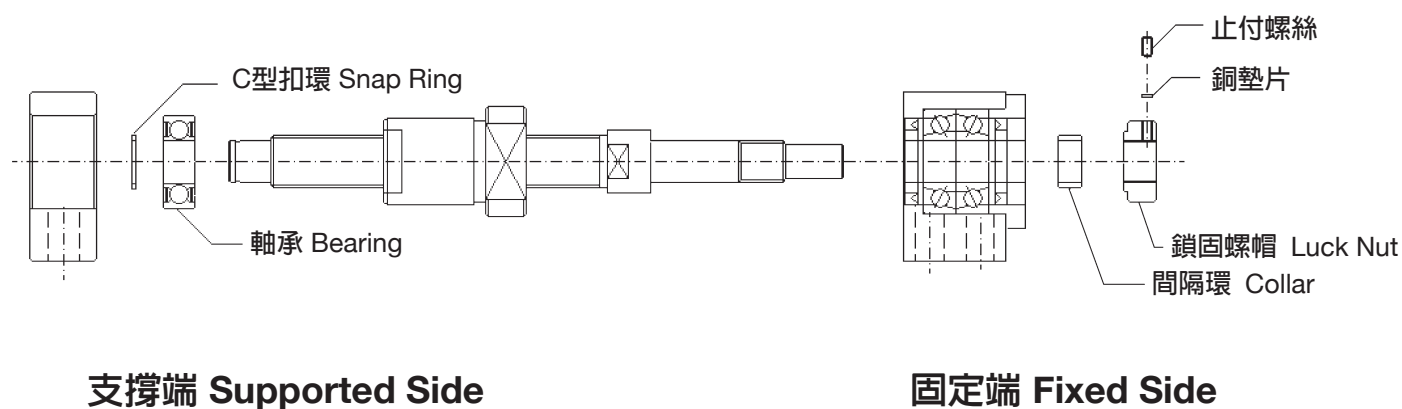
### ◆將固定端支撐座與滾珠螺桿組合。

- 請勿拆解支撐座
- 裝入螺桿時請勿刮破軸封

### ◆螺桿置入固定端支撐座後，鎖固螺帽之銅墊片請務必墊上，並用內六角止付螺絲鎖上。

- 在固定前先將銅墊片置入鎖固螺帽內，並以耐落膠防止鬆落
- 若在特殊環境下，請與我們連絡

### ◆將支撐端軸承與螺桿軸端組合，並以C型扣環固定，再將其置入支撐端支撐座內。



支撐端 Supported Side

固定端 Fixed Side

## 確認精度

### ◆量測滾珠螺桿固定端軸端處迴轉精度。

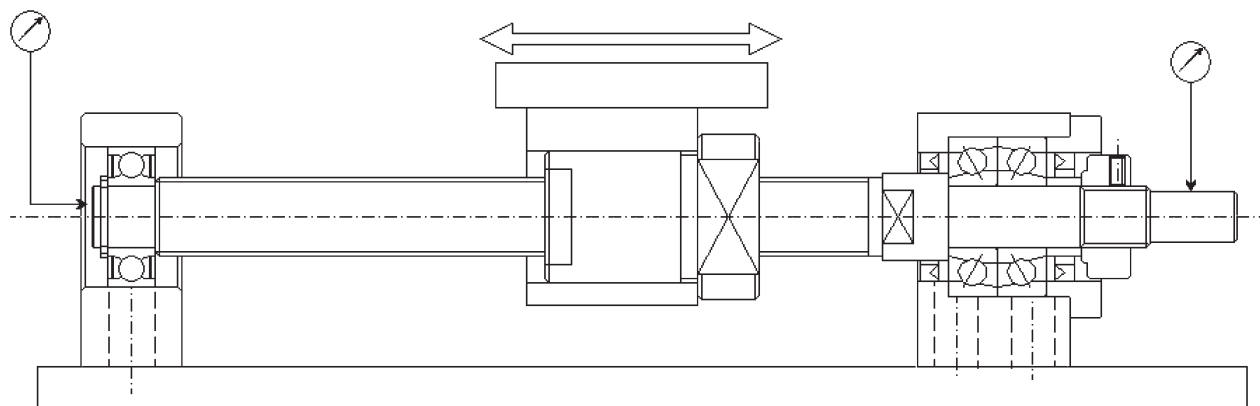
- 滾珠螺桿軸端之震幅

### ◆量測支撐端軸端軸向背隙。

- 軸方向之背隙

測定軸方向之背隙 Measure the axial clearance

測定軸端之震幅 Measure the run-out







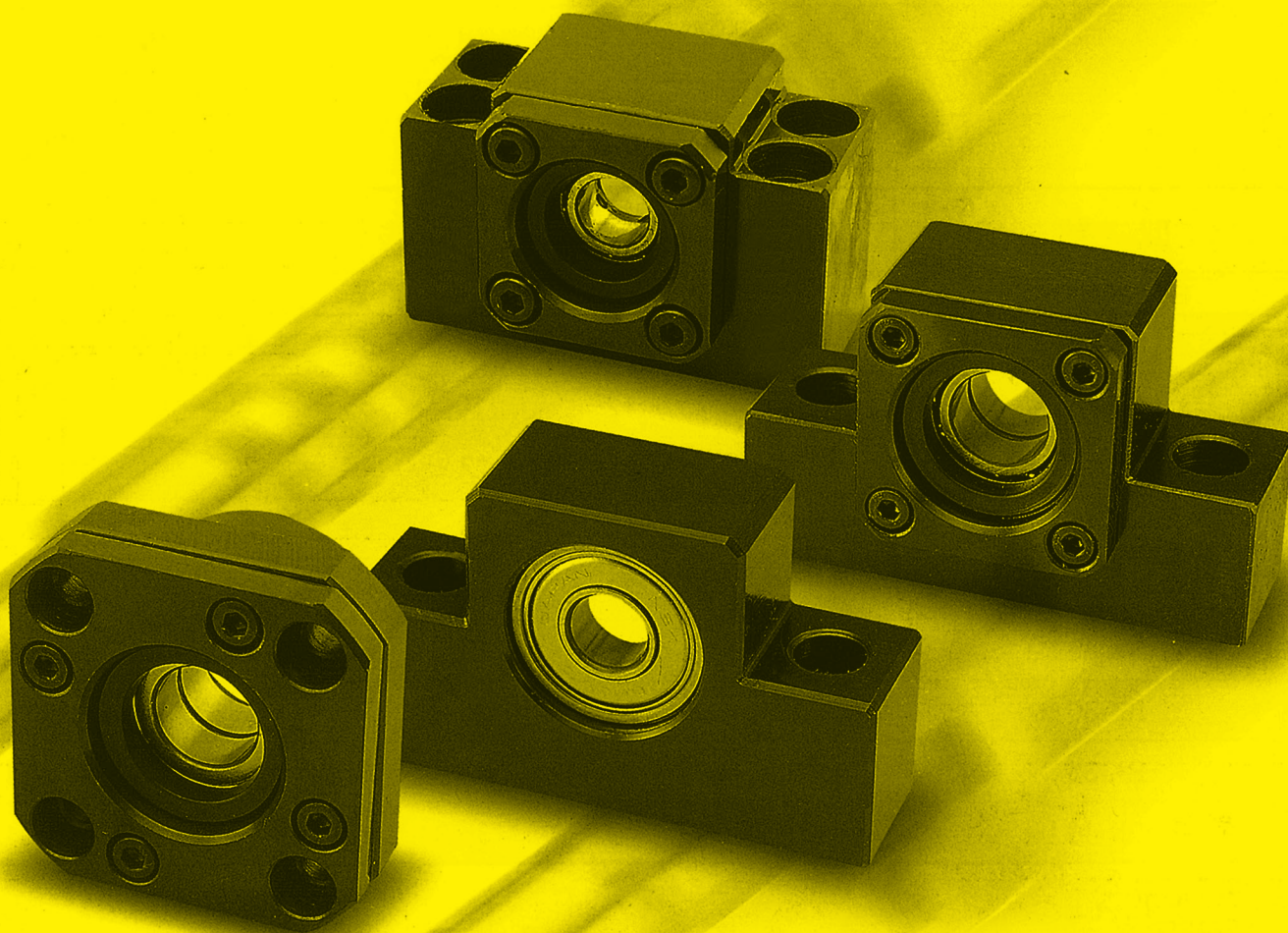


授权代理商：滨崎自动化科技（深圳）有限公司

深圳市龙岗区南联碧新路2055号佳业广场308

[www.hamasaki-cn.com](http://www.hamasaki-cn.com)

销售电话：17620462872 客服电话：13632805384



**承鈞企業有限公司**

CHENG JUN ENTERPRISE CO., LTD.

高雄市小港區松華路526號

TEL : (07)8013488 FAX : (07)8011366

統一編號：27686145

E-mail : [info@nsb.com.tw](mailto:info@nsb.com.tw)

[http : //www.nsb.com.tw](http://www.nsb.com.tw)