



Features

- Highlight SMD5050RGB + flexible FPC
- High brightness :
R 75lm/m (23lm/ft)
G 155lm/m (47lm/ft)
B 30lm/m (9lm/ft)
RGB 260lm/m (79lm/ft)
- Precise cutting 100mm/unit (0.328ft/unit)
- Waterproof: IP20~IP67
- Working time ≥ 50000 H
- Suitable for various dimming controllers

Standard CCT



R 620nm

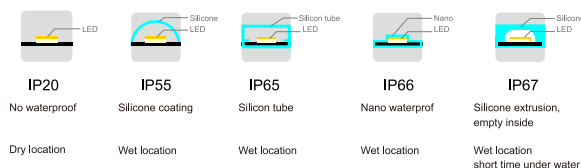


G 525nm

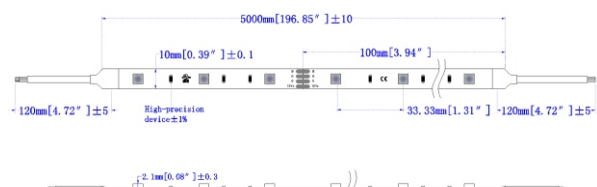


B 470nm

Various waterproof solution



Dimension



BV standard product

help to set up an energy conservation, flexible and multifunctional home lighting , the product with the features of low power, high brightness and high waterproof, various of connection accessories and dimming control systems are for choice

Parameter

Input voltage	12Vdc
Beam angle	120°
CCT	R/G/B
Power	R 2.4W/m (0.73W/ft) G 2.4W/m (0.73W/ft) B 2.4W/m (0.73W/ft) RGB 7.2W/m (2.19W/ft)
Current	R 0.2A/m (0.061A/ft) G 0.2A/m (0.061A/ft) B 0.2A/m (0.061A/ft) RGB 0.6A/m (0.183A/ft)
Brightness	R 75lm/m (23lm/ft) G 155lm/m (47lm/ft) B 30lm/m (9lm/ft) RGB 260lm/m (79lm/ft)
Length / reel	5M (16.4ft)
Cut length	100mm/unit (0.328ft/unit)
IP grade	IP20/IP55/IP65/IP66/IP67
Operating Temperature	-20℃ ~ +45℃
Storage temperature	0℃ ~ +60℃
Environment humidity	40-70% RH

Test report

