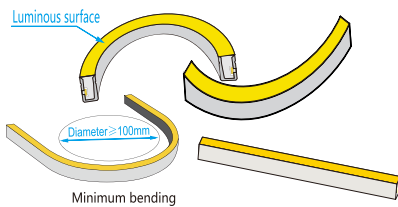
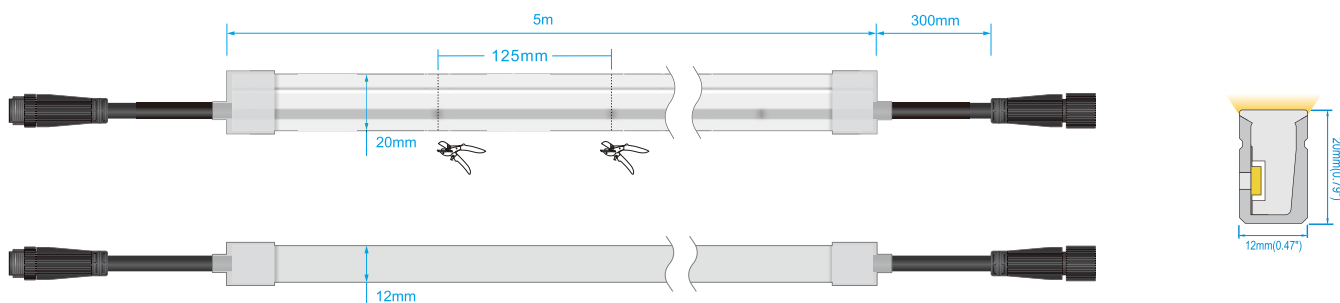


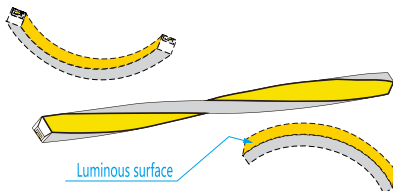
Soft light emitting, environmental protection grade silicone material, integrated extrusion molding process. Unique optical light distribution structure design, uniform lighting surface and no shadow. IP67 protection level, salt solution resistance, acids & alkalis, corrosive gases, fire and UV resistance. Excellent toughness, simple and stylish appearance, delicate and unique. 3 years warranty, working life ≥ 50000 hours.

- Compatible with DMX512(1990) signal protocol.
- Adopt RS485 signal trunk and signal differential transmission mode to ensure stronger ability of anti-interference and longer transmission distance
- Automatically addressing with editor

Dimension structure



Correct bending direction and bending radius



Do not twist it or bending reversely

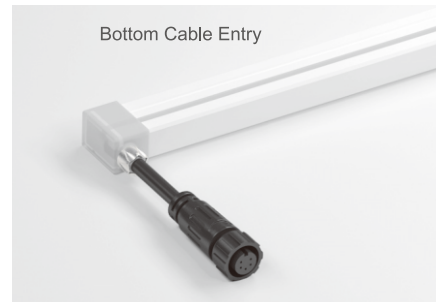
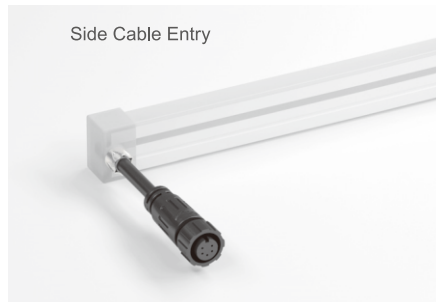
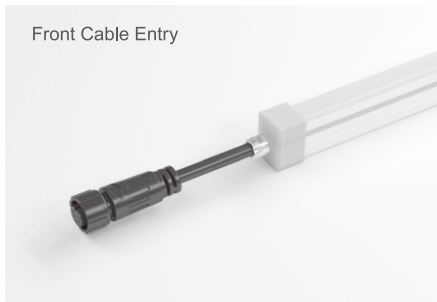
Parameter

Light transmittance	28%
Beam angle	115°
Voltage(V)	DC24
power(W/M)	Max.10
Minim cuttable length	125
LED(PCS/M)	80
IP Gard	IP67
Gray Scale	65536
Working Temperature	-25°C -- 45°C
Pixel(pix/M)	8
Control Mode	DMX512
Lumen / m	R:31 G:92 B:17.5 RGB:138
IC type	SM16522PS



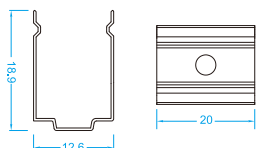
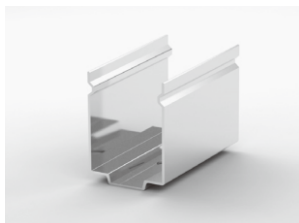
Various Connections

Use three kinds of entry cable to meet the different installing request

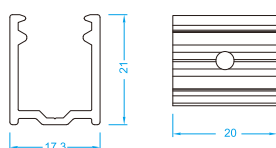
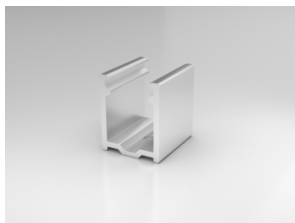


Mounting Way

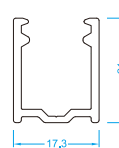
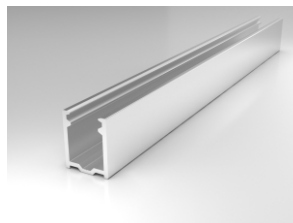
Stainless Steel Mounting clips



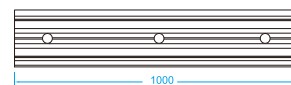
Aluminium Mounting clips



Aluminium Profile



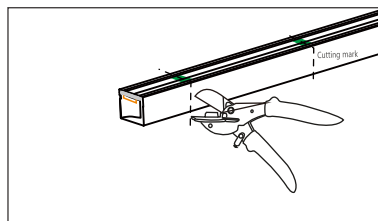
Suspension Installation



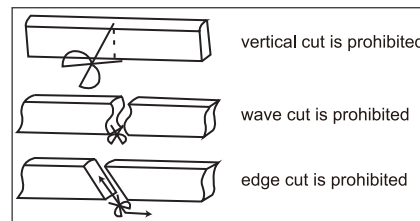
Cuting



Special cutter



Correct cutting way



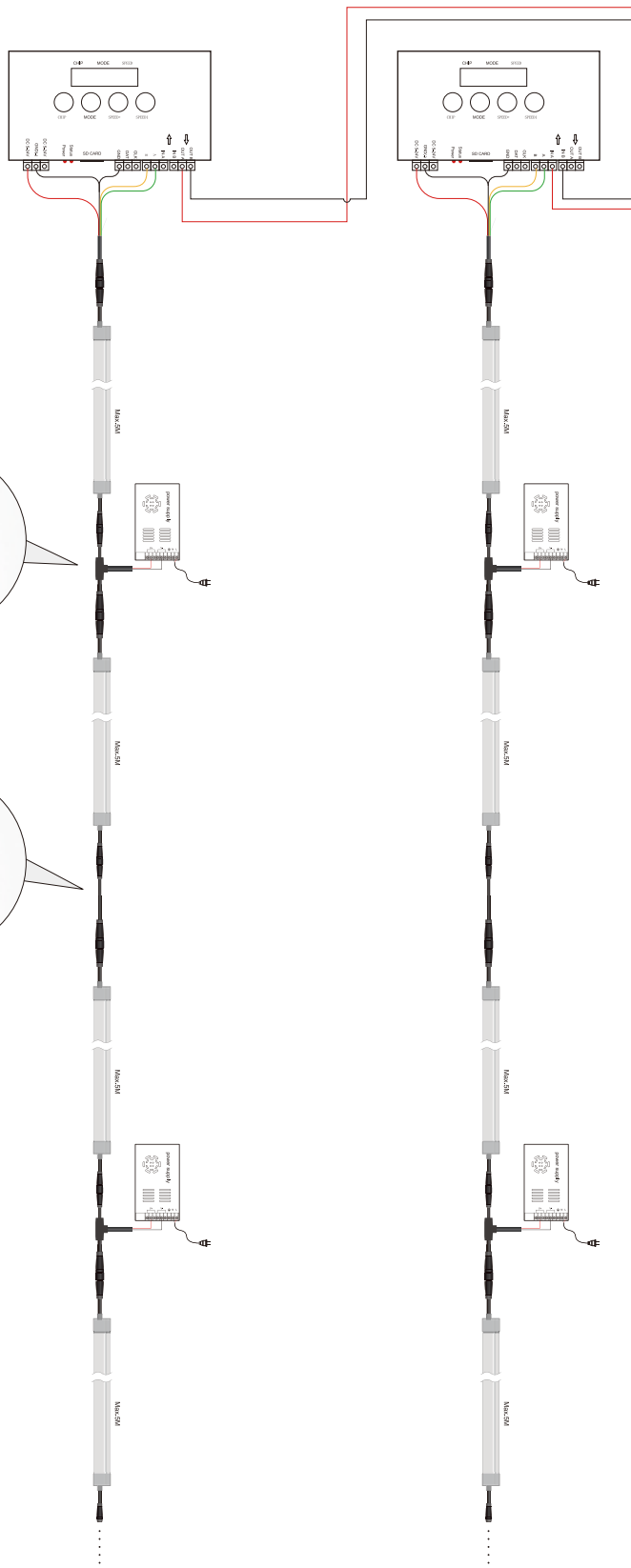
Wrong cutting way

Offline control

After the led strip is connected to the signal wire and power supply wire correctly, it is necessary to use a special addresser to address the led strip, then the controller / console can run the control effect program.

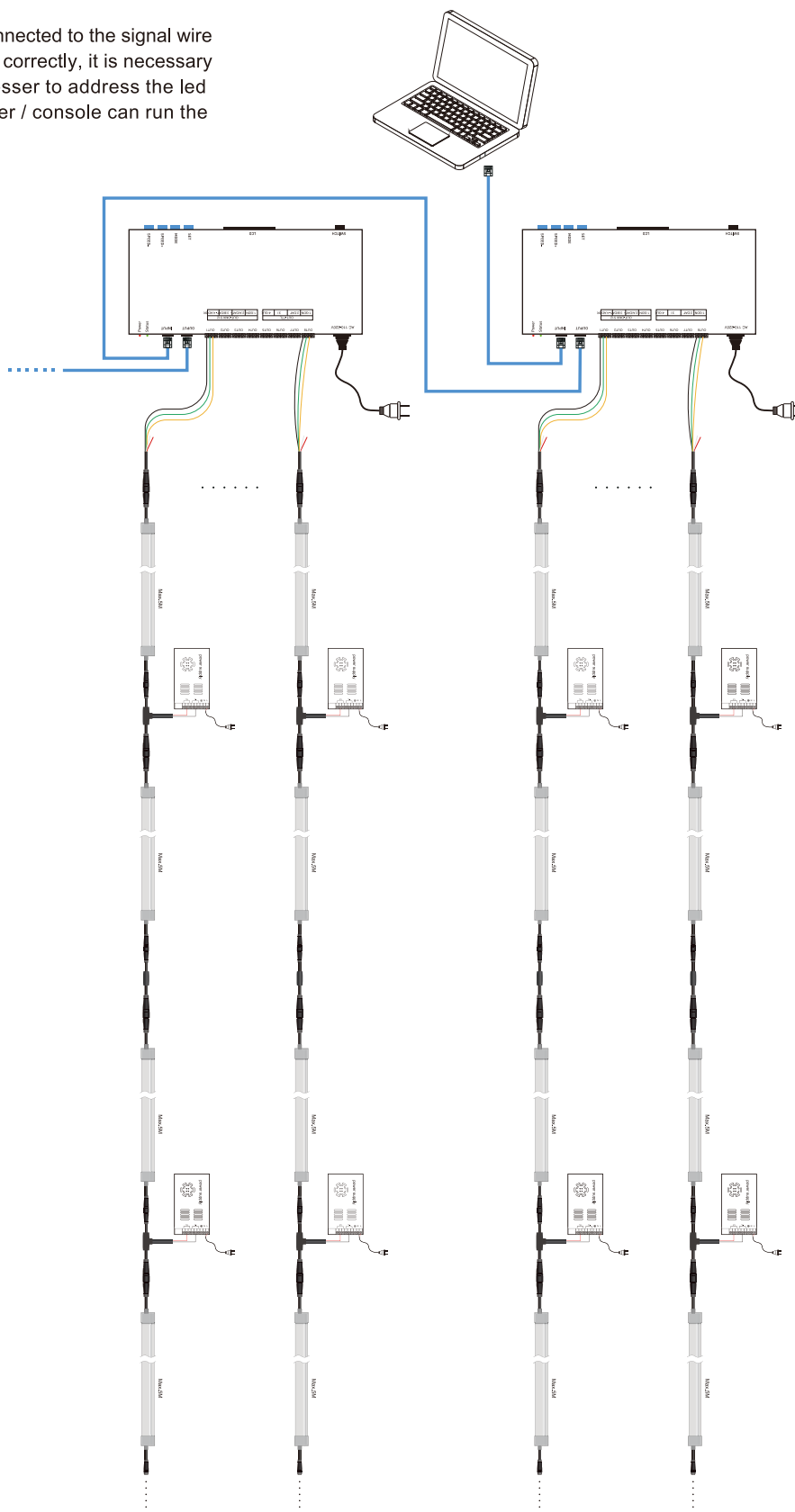
T shape power and signal connector
(Power supply and signal connection at both ends)

Signal connecting cable
(Isolate power supply, Signal pass through)



Online control

After the led strip is connected to the signal wire and power supply wire correctly, it is necessary to use a special addresser to address the led strip, then the controller / console can run the control effect program.



Addressing Instructions

The addressing operation is an operation that needs to be performed when the power is turned on for the first time after the wiring of led strip is completed; There is no need to address the led strip without changing the connection order of the led strip. The led strip and the addressing device are connected according to the corresponding relationship in the following table:

Wire order of led strip input	Addressing device's port
green	A
yellow	B
black	GND

Using the K-1000C

The controller integrates control and addressing, and can only be automatically addressed backward to 512 channels from the default starting channel value 001. After addressing is completed, switch to the controller mode, you can automatically run the control effect program without power off. The operation is as follows:

- 1 After the led strip and the controller are properly connected with the signal and power cable, power on

- 2 After the controller is started, firstly hold down the "CHIP" button, then press the "MODE" button at the same time, the controller shows "61 XX XX", Release two buttons at the same time to enter the led strip's addressing interface, as shown below:



- 3 Press the "CHIP" button to adjust the displayed value of the first and second digits to "65", the last digit needs to be kept at "3" (if it is other numbers, can adjust the SPEED + / SPEED- two buttons), as follows Figure:



- 4 Press the "MODE" button to start addressing the led strip, the controller shows "A A A", as shown below:



- 5 Wait for the completion of addressing, and show "65 1 3", as shown in the figure below



- 6 Firstly press the "CHIP" button and then press the "MODE" button to exit the addressing mode and enter the controller mode, as shown in the following figure.



- 7 The display of the first and second digits of the controller must be "10". If it is other numbers, the led strip cannot be controlled normally. Adjust the "CHIP" button to select the displayed values of these two digits.

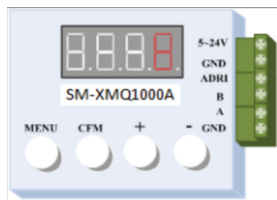
- 8 In the program broadcast mode, you can change the broadcast speed by adjusting the "SPEED +" and "SPEED-" buttons; If there are multiple programs in the SD card, you can select the program you need to play through the "MODE" button.

Use of SM-XMQ1000A

This addresser can only be used for addressing and post-addressing testing. After the addressing operation is completed, disconnect the led strip's signal input wire from the addresser and connect it to the DMX512 controller or console, control the effect program by the controller or console

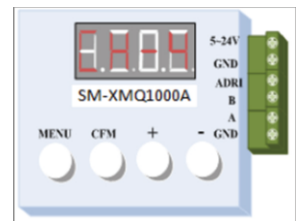
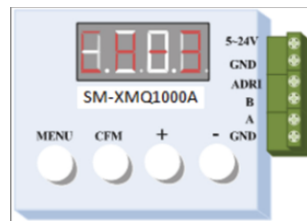
The addresser can implement customized initial channel value setting. The addressing operation is as follows:

- The coder powers up by default to play the built-in testing effect, the built-in effect are 9 pcs, The menu "CFM" can switch the built-in effect, when pressed to the digital tube with the word "LOOP" displayed, the built-in effect will circularly play, if press the key again, the built-in effect will individually play, The following interface shows the current broadcast of the eighth shows the current broadcast of the eighth built-in testing effect:

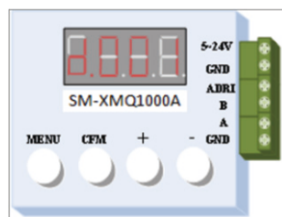
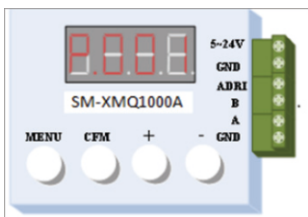


- After the addresser is connected to the signal wire of the led strip; the led strip and the addresser are powered on

- Under built-in effect 1-9, as shown in the interface above, shortly press the "MENU" key to turn into the interface (CH-3, CH-4), long press "MENU" key, can switch "CH-3" and "CH-4", our led strip select "CH-3"



- When the interface is "CH-3", please press the "MENU" button to enter the interface as below picture:

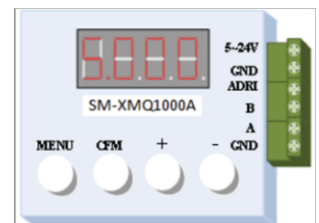


Press the "CFM" button to switch between "P.001" and "d.001", this led strip selects "d.001"

- Under the interface of "d.001", Press "+" or "-" key to set the "initial channel value"; the 001 bit will be added and subtracted automatically.

- After finished setting the "initial channel value", press "MENU" key to enter the following interface for set the "channel step"

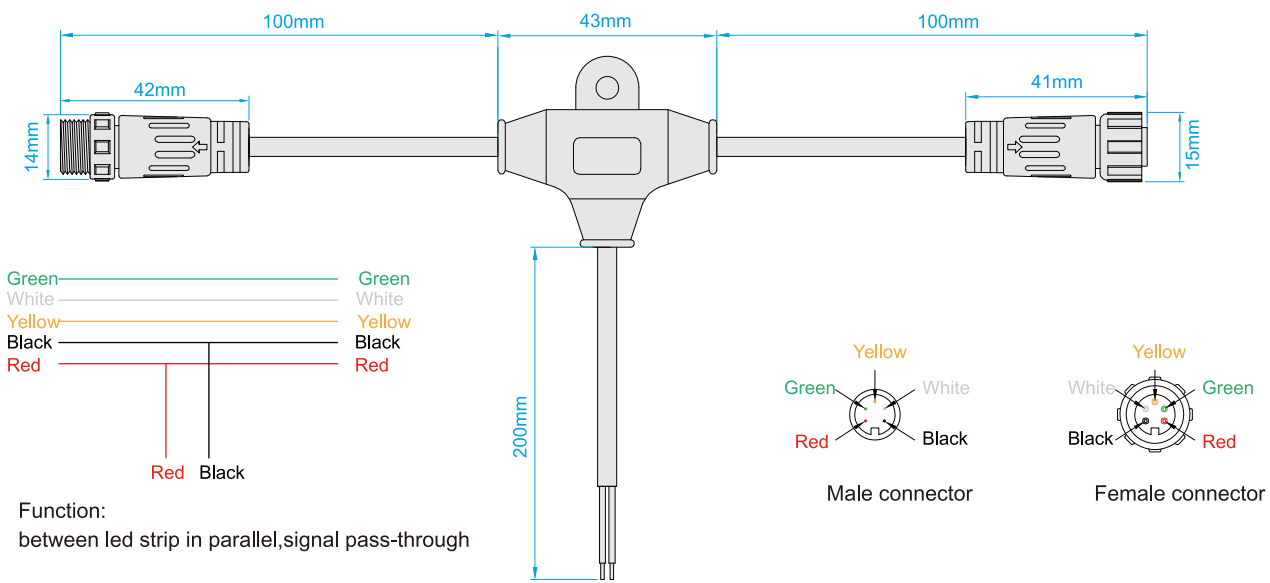
Press "+" or "-" key to set the "Channel Step", the led strip is set to "S.003"



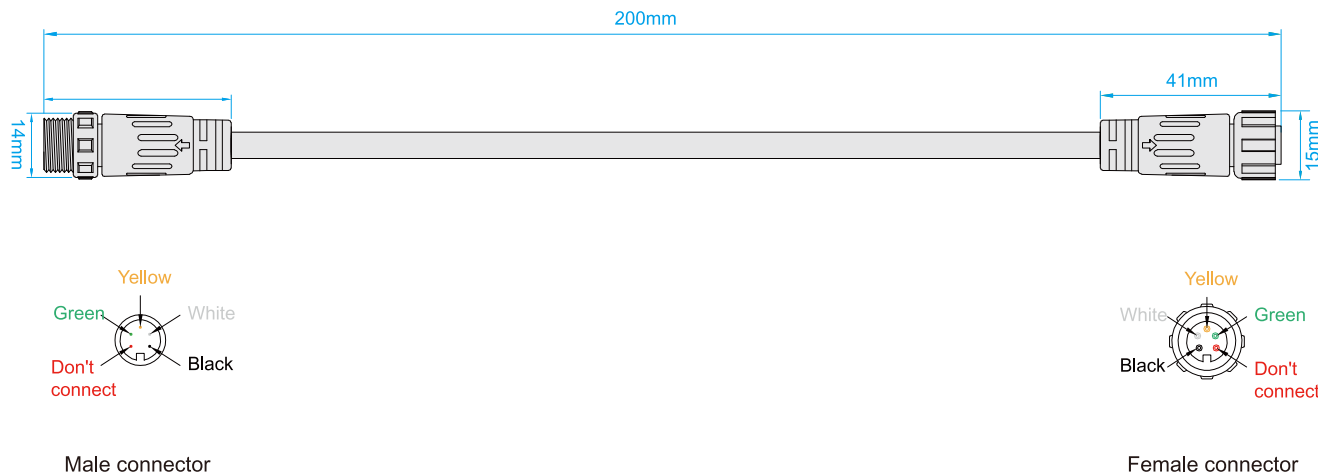
- In the above interface, press the "CFM" key to enter the code writing status, please wait for the code writing to be completed.

Optional accessories

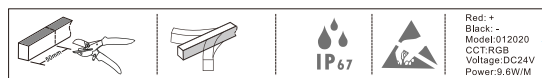
T-type 3 channel connector



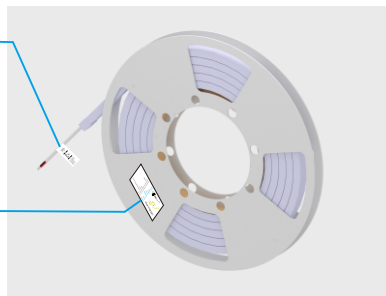
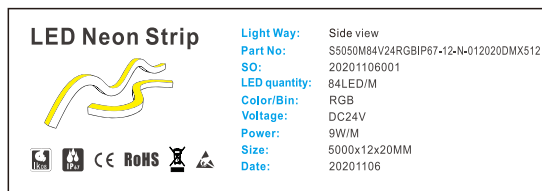
Signal switching cable



Package

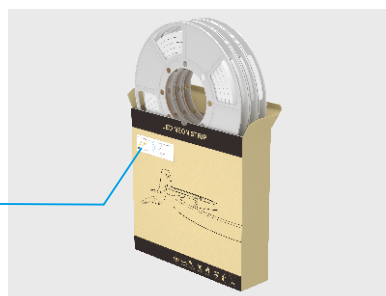
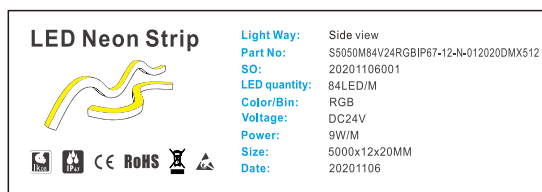


Red: +
Black: -
Model: 012020
CCT: RGB
Voltage: DC24V
Power: 9.6W/M



5M=381mm x 29mm

• Reel



5M=29mm x 3 reels

• Inner box



3 boxes



410*410*260mm

• Packing