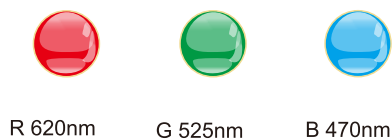




## Features

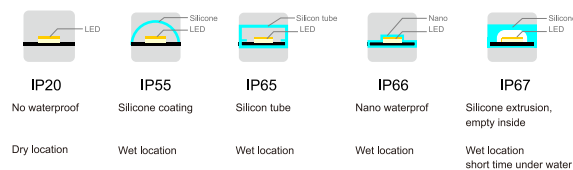
- Highlight SMD5050RGB + flexible FPC
- High brightness :  
R 155lm/m ( 47lm/ft )  
G 315lm/m ( 96lm/ft )  
B 65lm/m ( 20lm/ft )  
RGB 520lm/m ( 158lm/ft )
- Precise cutting 50mm/unit ( 0.164ft/unit )
- Waterproof: IP20~IP67
- Working time  $\geq 50000\text{H}$
- Suitable for various dimming controllers

## Standard CCT

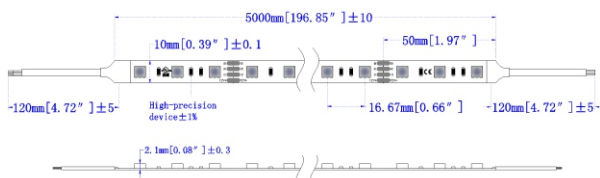


R 620nm      G 525nm      B 470nm

## Various waterproof solution



## Dimension



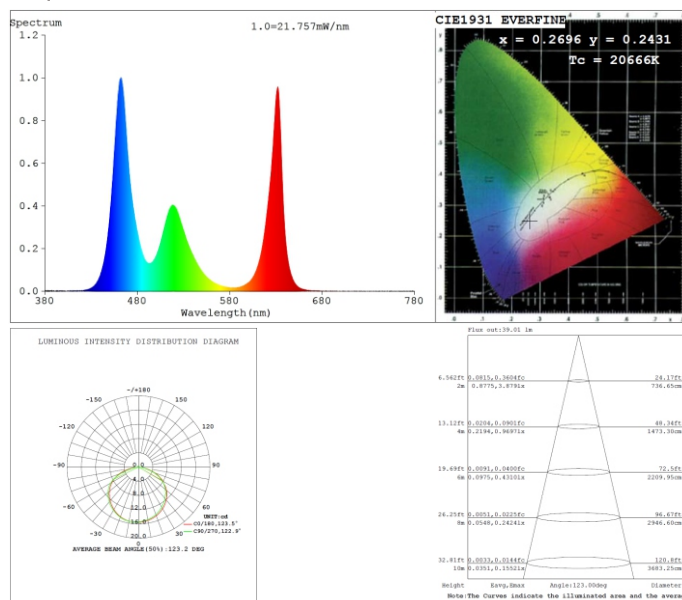
## BV standard product

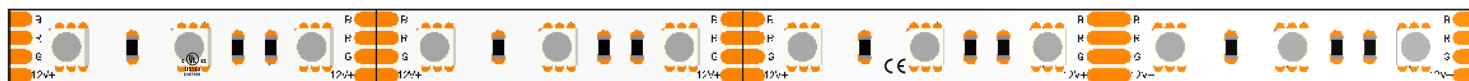
help to set up an energy conservation, flexible and multifunctional home lighting , the product with the features of low power, high brightness and high waterproof, various of connection accessories and dimming control systems are for choice

## Parameter

Input voltage	12Vdc
Beam angle	120°
CCT	R/G/B
Power	R 4.8W/m ( 1.46W/ft ) G 4.8W/m ( 1.46W/ft ) B 4.8W/m ( 1.46W/ft ) RGB 14.4W/m ( 4.4W/ft )
Current	R 0.4A/m ( 0.122A/ft ) G 0.4A/m ( 0.122A/ft ) B 0.4A/m ( 0.122A/ft ) RGB 1.2A/m ( 0.37A/ft )
Brightness	R 155lm/m ( 47lm/ft ) G 315lm/m ( 96lm/ft ) B 65lm/m ( 20lm/ft ) RGB 520lm/m ( 158lm/ft )
Length / reel	5M ( 16.4ft )
Cut length	50mm/unit ( 0.164ft/unit )
IP grade	IP20/IP55/IP65/IP66/IP67
Operating Temperature	-20℃ ~ +45℃
Storage temperature	0℃ ~ +60℃
Environment humidity	40-70% RH

## Test report





### R 620nm

4.8W/m ( 1.46W/ft )  
155lm/m ( 47lm/ft )

### G 525nm

4.8W/m ( 1.46W/ft )  
315lm/m ( 96lm/ft )

### B 470nm

4.8W/m ( 1.46W/ft )  
65lm/m ( 20lm/ft )

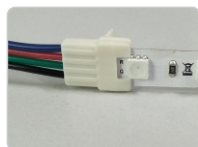
### RGB

14.4W/m ( 4.4W/ft )  
520lm/m ( 158lm/ft )

## Optional accessories



BV-SL10BB-4  
IP20-10mm RGB  
for 30 ~ 120LED/m



BV-SL10XB-4  
IP20-10mm RGB  
for 30 ~ 120LED/m



RGB 10mm-IP20  
Splice Connector  
(L) Snap connector  
(T) Snap connector  
(X) Snap connector



BV-SE-N10XB-4  
IP20/IP55-10mm RGB  
for 30 ~ 120LED/m



BV-SE-N10BB-4  
IP20/IP55-10mm RGB  
for 30 ~ 120LED/m



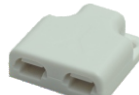
BV-XC-JXD-H2  
DC/AC 300V10A  
for 18 ~ 22AWG



BV-XC-JXD-T2  
DC/AC 300V10A  
for 18 ~ 22AWG



BV-XC-JXD-D2  
DC/AC 300V6A  
for 18 ~ 22AWG  
Connectible

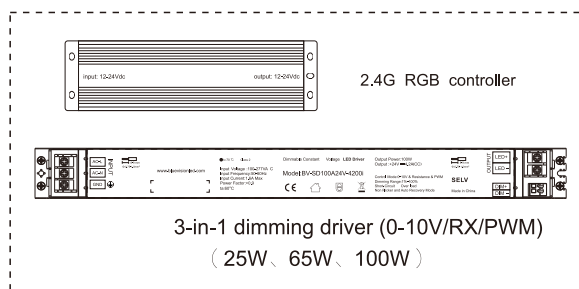


BV-XC-PD-1T02  
DC/AC 300V6A  
Compatible with BV-XC-JXD-D2, 1 for 2 connector

## 2.4G dimming

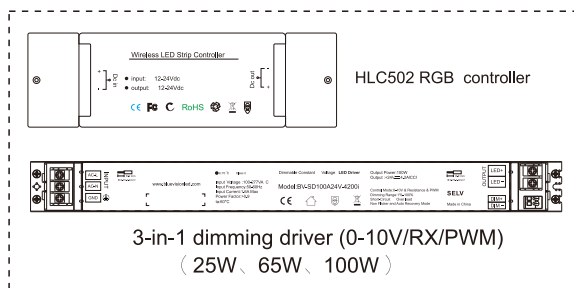


Dimmer



LED flexible strip

## Smart dimming



LED flexible strip