

# User Manual

---

## Travel router & portable WIFI box



Model No.: W-LB6

2013@v1.0

## **I. Product specification**

Charge in/out: DC5V/500mA

Storage device: USB disk drive; USB cardreader;  
USB external enclosure

Wireless I/F: WI-FI 802.11b/g/n

WiFi outreach: approx. 10M

Operation temp: -10~50°C

Charging temp: 0~45°C

## **II. Product feature**

Portable travel router

Wireless storage for smart phone/pad

Wireless file server

Wireless video/audio playback

Support up to 4 devices simultaneously

iPhone/iPad apps available

Password protection

## **III. System require & support media type**

Compatible with iOS 4.3.5 and above, Android 2.3 and above, Windows 8/7/ Vista/ XP, Mac OSX 10.4 and later, and Linux kernel 2.4 and above.

Support media type:

Photo: JPG, JPEG, PNG, BMP

Audio: Mp3, WAV

Video: ios: M4V, MOV; android: Mp4

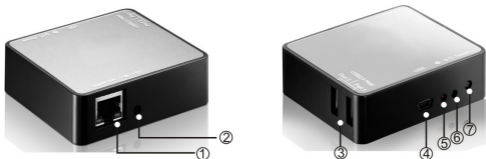
Document: DOC, XLS, PPT, PDF, TXT

## IV. Package

Before using the product, please check the fittings in the package compliant with the below. If not, please contact the local dealers timely.

- ◇one travel router & portable WIFI box
- ◇one 1000M LAN cable
- ◇one installation CD
- ◇one USB to DC power cable

## V. Hardware view

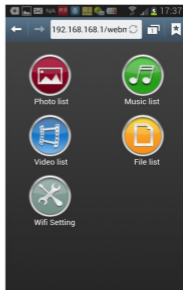
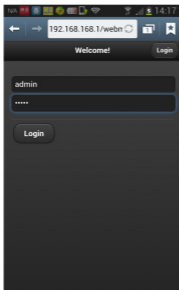


- 1---1000M RJ connector, for LAN cable.
- 2---DC jack,for 5V DC in.
- 3---2x USB port,for U-disk,cardreader...
- 4---USB port (It can't supply power for device)
- 5---System LED,when system ready,LED light.
- 6---Power and status LED.power on,blue LED light;  
when access device over WIFI, LED blinking.
- 7---Reset button. press over 3 seconds to reset to  
default status.

## VI. Access WIFI drive via browsers

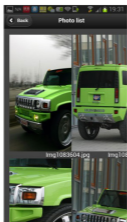
### 1. For Android smart phone/Pad

- 1). Connect USB-DC cable and power on the device, turn on your smart phone or pad's WIFI, the [IM1203xxxx] WIFI will be detected and display, then connect it.
- 2). Open a web browser, key in **192.168.168.1** or any website
- 3). The login window will appear and key in account [admin] and password [12345]
- 4). There will display [Photo list] / [Music list] / [Video list] folder.



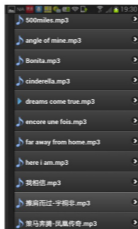
## a. Photo

Tap the photo icon and choose photo to browse



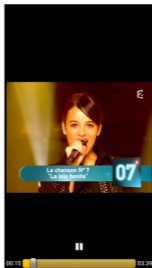
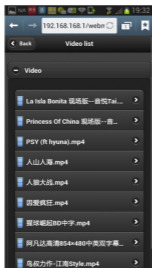
## b. Music

Tap the music icon and select music and play




### c. Video

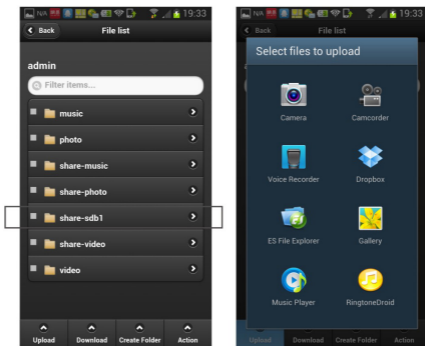
Tap the video icon and select and play video



If the movie can't play normally, it due to the player software, please download other player such as **[Moboplayer]** and try it again.

### d. File manager

Tap  icon, In this window, you can manage your file, create new folder, upload or download files to between the portable WIFI device and your mobile smart phone/pad.



If you want to add one folder in U-disk, please create the folder under [Share sdb1] folder.

To upload files, please open the destination folder, such as [Share sdb1]---[Photo], then tap [Upload], select photos from your smart device, the photo will be upload to the folder.

Download files from portable driver to local smart device, open the folder such as [Share sdb1]--[Photo], select the photos, then tap [Download], the photo will download to local smart device.

## e. WIFI setting

Tap  icon enter WIFI setting window, you can set your SSID and WIFI password, the SSID you enter will showing on the wireless network list



Enable on/off button and key in your password, if you forget your password, click [Display text] to view your password

Submit after need to connect WIFI drive again.

## 2. For iPhone/iPad

Connect WIFI to internet, enter APP store to download [Mcloud] driver and install. Tap [Mcloud] icon to enter, it will display a window. Tap the Mcloud icon to login.

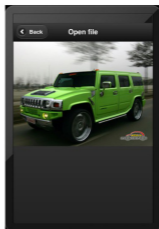
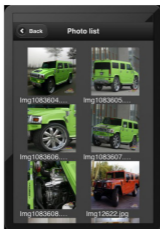


Key in the account [admin] and password [12345], enter [Share-sdb1], you will see [Photo list] /[Music list] /[Video list] 3 folders.



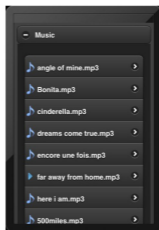
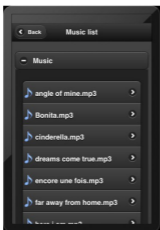
## a.Photo

Tap the photo icon and choose photo to browse



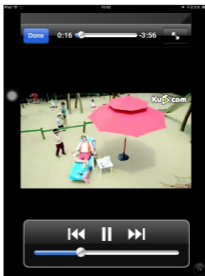
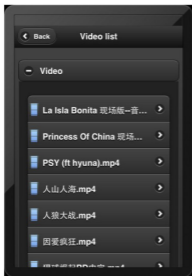
## b.Music

Tap the music icon and select music and play



## c. Video

Tap the video icon and select and play video



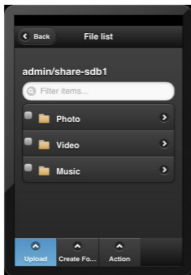
If the movie can't play normally, it due to the player software, please download other player such as **[Moboplayer]** and try it again.

## d. File manager

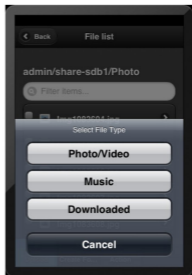
Tap  icon, In this window, you can manage your file, create new folder, upload or download files between the portable WIFI device and your mobile smart phone/pad..

If you want to create one folder in U-disk, please create the folder under [Share sdb1] folder.

To upload files, please open the destination folder, such as [Share sdb1]---[Photo], then tap [Upload], select photos from your smart device, the photo will be upload to the folder.

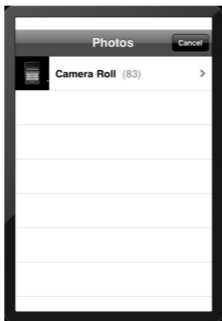


Open a destination folder, then tap [Upload]




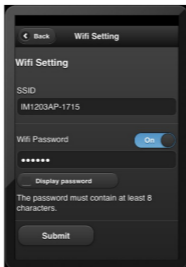
Select the files type, if it is photo, please tap [Photo/Video]

Select the photo you want to upload, the photo will upload to the folder.



## e.WIFI setting

Click  icon, enter WIFI setting window, you could modify the device name and set a password.



## VII.Set the product as a travel WIFI router

Connect the USD-DC cable to device and power source Please plug the LAN cable into the RJ45 in device, the Lan cable must connect to your router and could access internet. Now the device convert to a WIFI router and you can visit internet with the device over WIFI.

# Disclaimer

**All the information in this document is subject to change without prior notice. The manufacturer makes no representations or any warranties regarding the Contents of this manual. The information contained in this manual is provided for the general use by the customers. No part of this document may be reproduced or transmitted in any form by any means without the express written permission of The manufacturer. All brand names and product names used in this document are trademarks or registered trademarks of their respective holders.**

