

USER MANUAL

1BAY M.2 NVME SSD Full system Clone Dock



Model No: 31CBNV1C

USB3.2 Gen2 10Gbps

2023@v1.0

Model 31CBNV1C

Congratulations on your purchase of our product! We will show you a new storage concept with safety and convenience. It is our pleasure to give you the best solution to expand your HDD's capacity and enhance your data's reliability in PC system. Before using the product, please, read this manual carefully for further recognizing of the product. Thank you!

SECURITY MEASURES

Do not try to modify the product by yourself, it can do only the qualified specialists.
If a problem is detected, contact the authorized service center.
Warning! The manufacturer and distributors are not responsible for cases when the device is not used for its intended purpose or in accordance with this manual.
The manufacturer reserves the right to amend the contents of this manual without publishing it on paper, if there are changes, they will be posted on the manufacturer's website in the section of the product for which the changes are made.

I. System Requirement

Basic environment for use this device:
Hardware requirement: a PC or Notebook with free USB port
System USB specification must support USB3.0/3.1 or USB3.2 Gen1/Gen2
Support Operation system: Win7/8/10/11

II. Feature

- * Suitable for SSD and interface: 2230/42/60/80mm M.2 NVME SSD solid state disk
- * Interface: M.2 NVME SSD to USB3.1 Gen2 Type-C (external interface standard Type-C port)
- * Transmission speed: theoretical transmission speed max up to 10Gb/s
- * Attached Clone software support full clone PC's or Notebook's HDD/SSD to NVME SSD through USB connect, you can backup your operating system and full data to the NVME SSD.
- * LED display NVME SSD read/write status
- * Just support M-key M.2 SSD, not support B-key M.2 SSD(NGFF)
- * Built-in Power on/off switch
- * Directly plug and pull NVME SSD, the operation is simple
- * Full aluminum material helps dissipate heat
- * Power supply: Bus-Power

III. Check fittings

Before using the product, please check the fittings in the package compliant with the below. If not, please contact the local dealers timely.
◇ One USB A-C cable
◇ One manual

IV. Install M.2 NVME SSD

Directly plug the M.2 NVME SSD in M-key connector.

V. SSD Full System Clone

This product support full Notebook/PC HDD/SSD clone to NVME SSD, please follow the steps as below :

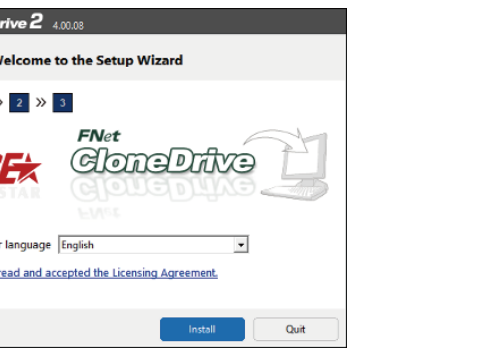
1. Plug the M.2 NVME SSD in M-key connector
2. Connect this product to your Notebook/PC by USB cable
3. Turn the power switch to Power on position

Note: the external target M.2 NVME SSD capacity must same or more bigger than Notebook/PC's HDD/SSD capacity

4. Login in the website: <https://www.agestar.com/download.html> to download the clone software: CloneDrive2_1Bay_31CBNV1C.rar

Clone software only support installation and using under Win7/8/10

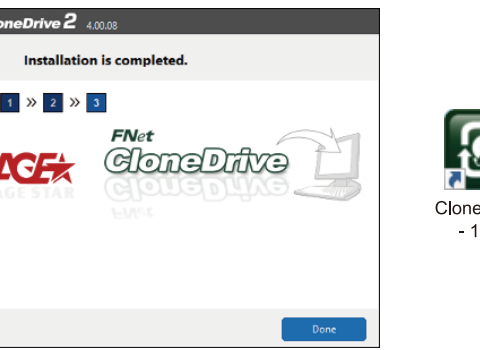
5. Double click the icon "CloneDrive2_install", select language and agree to accept the licensing agreement;



6. The driver start installing:.....



7. Installation completed and click "Done"



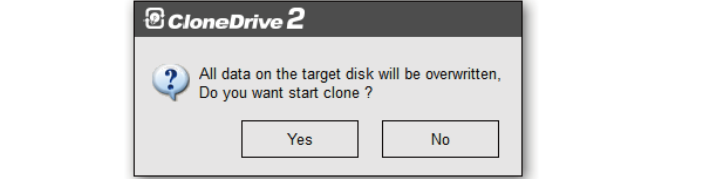
8. Double click the icon, the guide show [Make sure your internet is working properly, then click the "Activate" button], click "Activation"



9. CloneDrive will show source and target SSD information, and [Ready to clone] appear in window, click [Start]



10. All data in target SSD will be overwritten, make sure that old data has backup, then click [Yes] to continue



11. Start clone SSD and appear the progress



12. Clone action finish, and you will see the new target SSD information in disk manager window



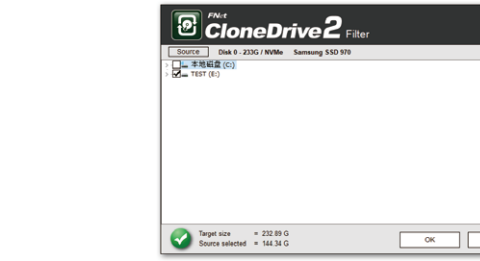
VI. Partition disk or folder clone

If you don't want to clone full disk, just want to clone one partition disk, or only clone the data of a certain folder, you can follow this steps as below:

1. Open the [DriverClone2] driver and click [Filter]



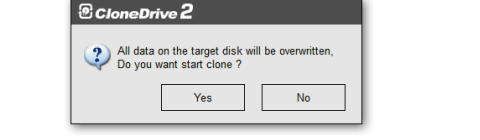
2. Select a partition disk such as [E:], or one or some folder, then click [OK]



3. Guide will show the source partition disk E to target SSD, click [Start]



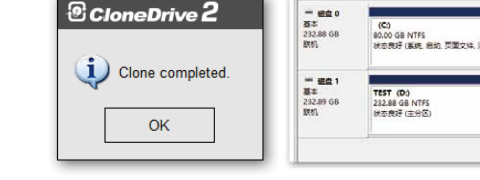
4. Guide also remind all data will be overwritten in target SSD, click [Yes] to continue



5. Guide will show the progress in window



6. After finish clone action, you can check the new disk information



Note: If use full system clone, the target SSD will have the same operation system (Windows xx....) and all data as source disk, have no any change.

VII. Driver Installation

Under system Win7/8/10/11, System will automatically detect the new hardware and finish the setup!

Then an icon will appear on the right-bottom area of the system toolbar as below:



VIII. Remove the external enclosure

Before removing this unit from your computer, please finish the following procedures for a safe removal.

1. Click the icon in the [Desktop] window of your computer
2. A [Safely Remove Hardware] message window will appear, Click the [Stop] button
3. [It is now safe to remove the USB device] message will appear, close the [Safely Remove Hardware] window
4. Now you can safely remove the enclosure!

IX. Format a new Hard Disk Drive

If you use a new Hard Disk Drive, you must format it before you use it. Please follow the steps as below to format your new Hard Disk Drive:

Under system Win 7/8/10/11

- 1). Right click [My Computer], and select [Manager]

- 2). System will display a "Computer Manager" window, And click [Disk Manager] in left window

- 3). In right window, The message of the new Hard Disk Drive will appear under the system disk, Such as [Seagate....]

- 4). Right click the new disk drive, And select [Delete partition]

- 5). Right click the new disk drive, Select [New Partition]

- 6). Right click the new disk drive, Select [New logical drive]

- 7). Right click the new disk drive, Select [Format disk drive]

- 8). Now you have formatted the new disk drive, Then in [My Computer], the new Hard Disk Drive will appear and you can use it.

Purpose

Connect your hard drive to your computer, laptop or TV. Designed for use without restrictions in residential and commercial premises.

Mounting rules and conditions

This device does not require any mounting or permanent fixation.

Storage conditions

The device must be stored at a temperature of 5 to 40 degrees Celsius at a relative humidity of no more than 85% and also avoid direct sunlight.

Transportation conditions

It is recommended to transport the device in the original package.

Terms of selling

The device is designed for selling through retail and wholesale networks and does not require special conditions.

Recycling conditions

Contact the authorized service center for recycling.

The service life of the product

24 months from the date of sale, but not more than 30 months from the date of production
Date of production is indicated on the product package

Warranty period

1 year: * In accordance with the warranty conditions.

Manufacturer

Age Star Inc, 6F-1., NO.23., Sec.1, Sichuan Rd., Banqiao City, Taipei, Taiwan, R.O.C.

Person authorized by the manufacturer to carry out actions when confirming conformity and to impose responsibility for non-compliance of products with the requirements of the technical regulations of the Customs Union: OOO "Network of Computer Clinics"

Address: 127521, Moscow, st. Sheremet'yevskaya , 47, et. 3, room 26.

Purpose

Connect your hard drive to your computer, laptop or TV. Designed for use without restrictions in residential and commercial premises.

Mounting rules and conditions

This device does not require any mounting or permanent fixation.

Storage conditions

The device must be stored at a temperature of 5 to 40 degrees Celsius at a relative humidity of no more than 85% and also avoid direct sunlight.

Transportation conditions

It is recommended to transport the device in the original package.

Terms of selling

The device is designed for selling through retail and wholesale networks and does not require special conditions.

Recycling conditions

Contact the authorized service center for recycling.

The service life of the product

24 months from the date of sale, but not more than 30 months from the date of production
Date of production is indicated on the product package

Warranty period

1 year: * In accordance with the warranty conditions.

Manufacturer

Age Star Inc, 6F-1., NO.23., Sec.1, Sichuan Rd., Banqiao City, Taipei, Taiwan, R.O.C.

Person authorized by the manufacturer to carry out actions when confirming conformity and to impose responsibility for non-compliance of products with the requirements of the technical regulations of the Customs Union: OOO "Network of Computer Clinics"

Address: 127521, Moscow, st. Sheremet'yevskaya , 47, et. 3, room 26.

Disclaimer

All the information in this document is subject to change without prior notice The manufacturer makes no representations or any warranties regarding the Contents of this manual. The information contained in this manual is provided for the general use by the customers. No part of this document may be reproduced or transmitted in any form by any means without the express written permission of The manufacturer. All brand names and product names used in this document are trademarks or registered trademarks of their respective holders.



Clone software download:
<https://www.agestar.com/download.html>