

The background of the entire image is a close-up, macro shot of a glass surface covered in numerous water droplets of varying sizes. A prominent, dark, diagonal crack runs from the upper left towards the bottom right, intersecting the droplets. The lighting creates highlights on the droplets, giving them a three-dimensional appearance.

decorated glass

**JYC<sup>®</sup>**  
SAFETY GLASS

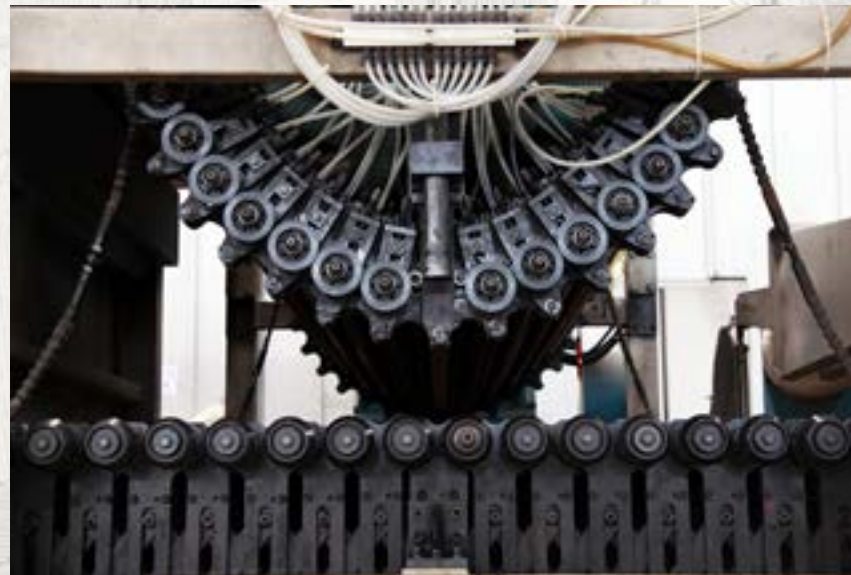
# decorated glass

design leonardi marinelli architetti

**JYC<sup>®</sup>**  
SAFETY GLASS



# 5000 years of glass



Glass is an inorganic solid material that is usually clear or translucent with different colors. It is hard, brittle, and stands up to the effects of wind, rain or sun.

The use of glass in buildings is a transparent feature to allow light to enter into rooms and floors, illuminating enclosed spaces and framing an exterior view through a window. It is also a material for internal partitions and external cladding.

Glass has been used for various kinds of bottles and utensils, mirrors, windows and more. It is thought to have been first created around 3000 BC. During the 15th century in Venice, the first clear glass called *cristallo* was invented and then heavily exported.

On 1902, Irving W. Colburn patented the sheet glass drawing machine, making the mass production of glass for windows possible.

20 years ago JYC Safety Glass have been supplying the domestic market in China as well as international markets. Today JYC develop new technology about decorated glass.





JYC GLASS Co., LTD is one of the most cooperated-valued safety decoration glass supplier in China, which is specialize in interior/exterior decoration project & DIY glass. JYC mainly produces the high added value construction decoration glass. JYC is supplying the world latest product for the sanitary, architectural decoration & furniture company. 85% of our products sell well to the EU, USA, AUS & ASIA. JYC not only has the Quality Certification of world, but has earn a good reputation in technology & after-sales. Every year, JYC sincerely services for over 2,000,000 families in the world.



The most versatile and advanced inglass printer



INTERIOR



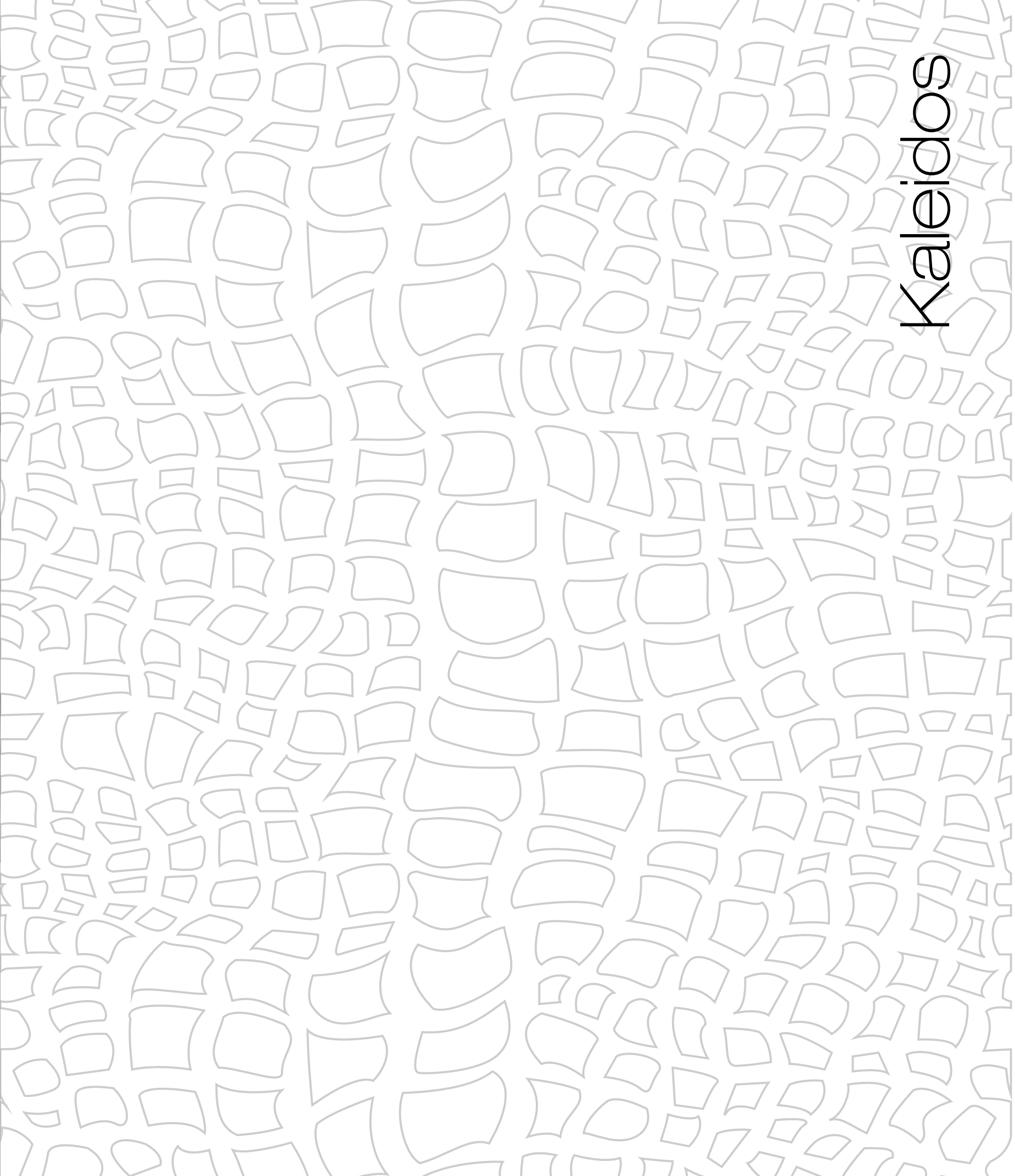
Woody



Plot







Kaleidos





Calypso

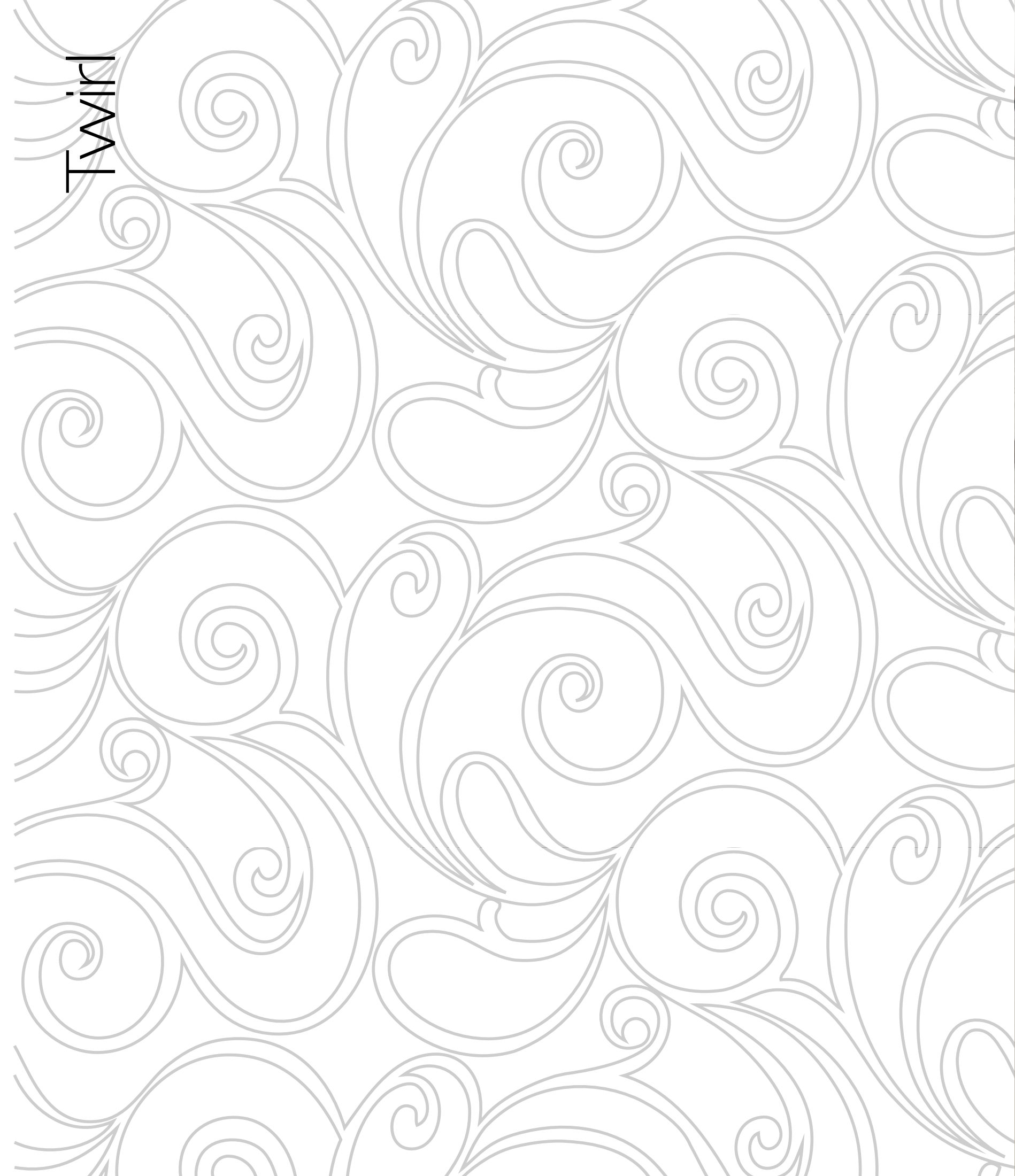


# Tangle





Twirl







Optical

ARCHITECTURE



Carbon







Smash



COMMERCIAL

Pop





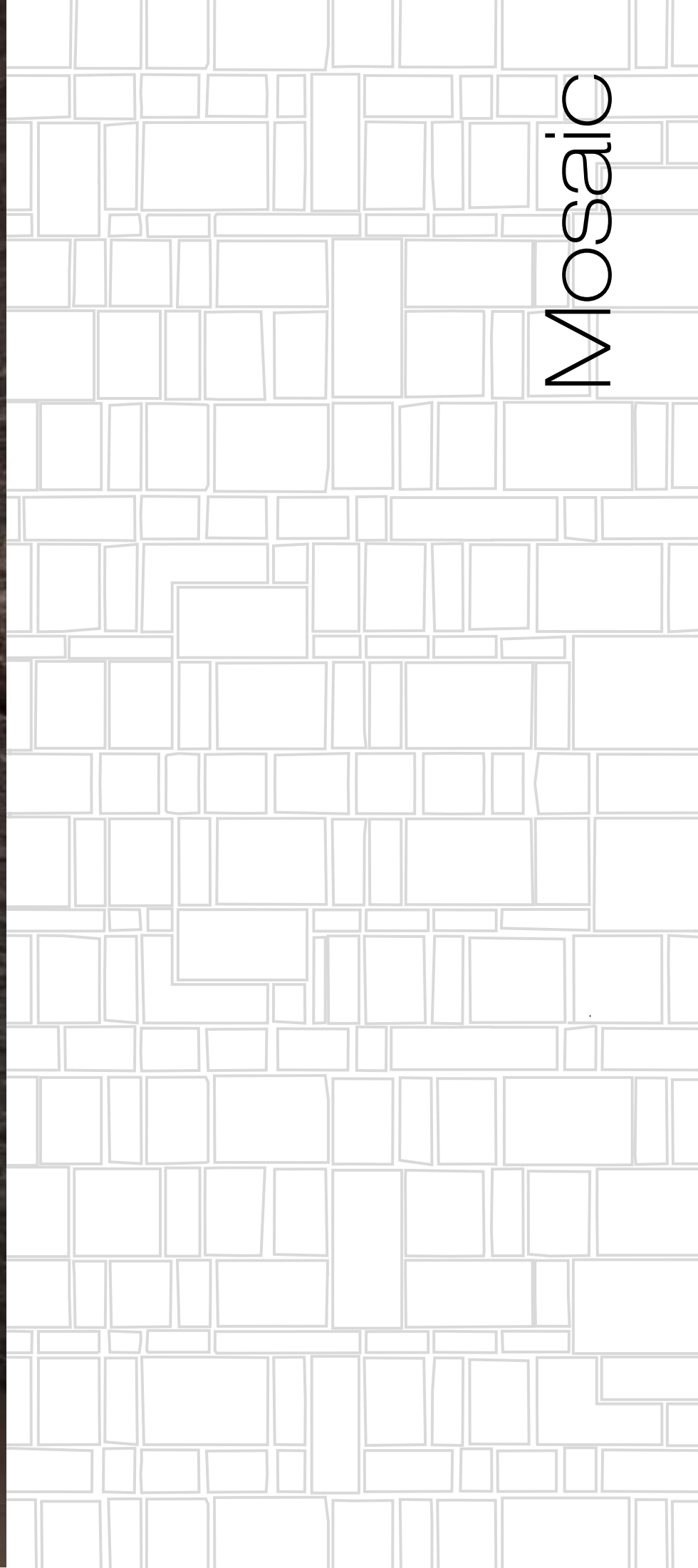
Cross







Mosaic

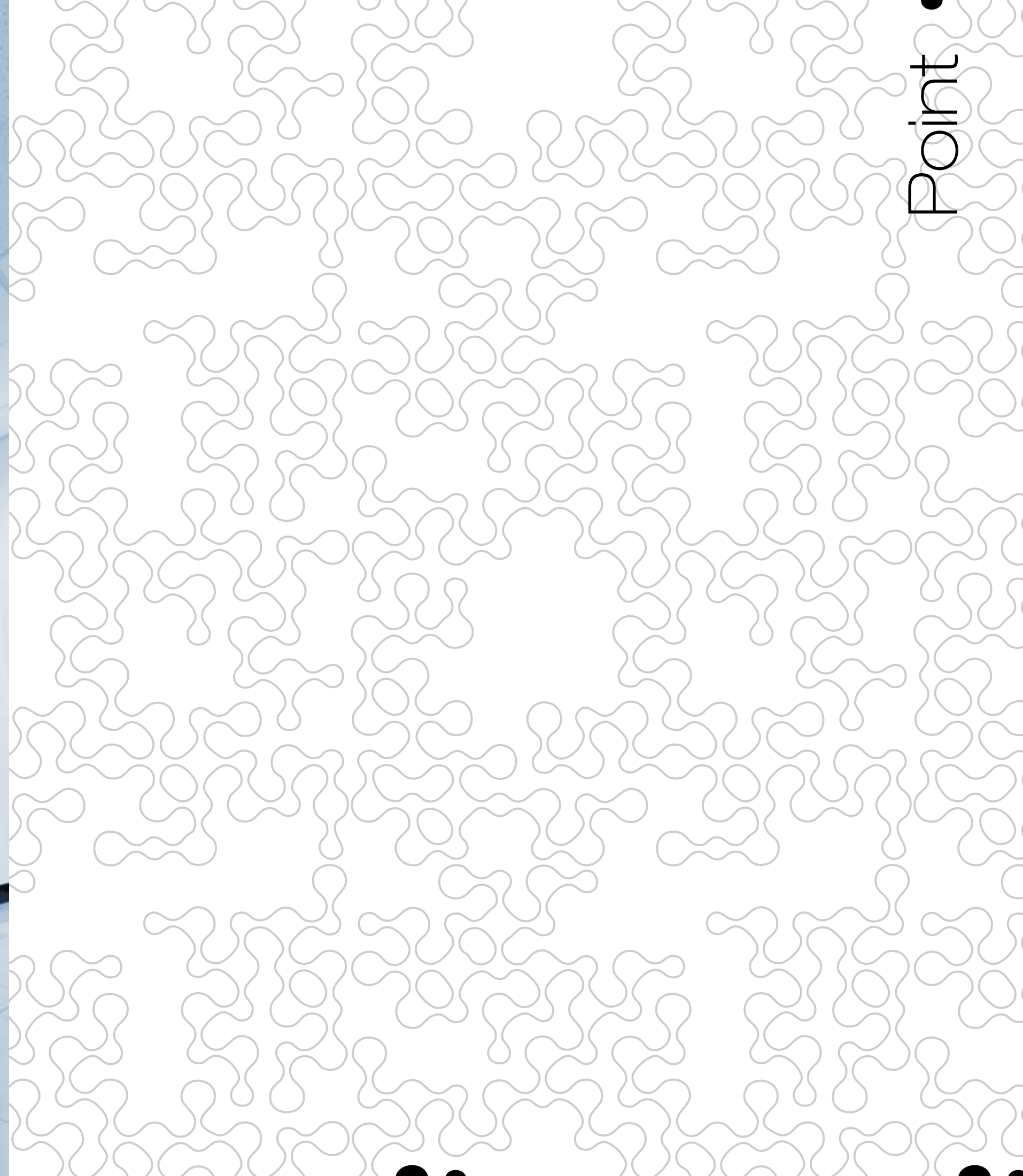




Grid





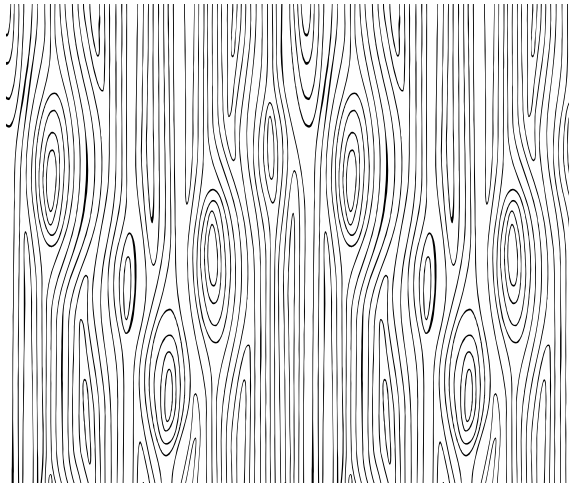




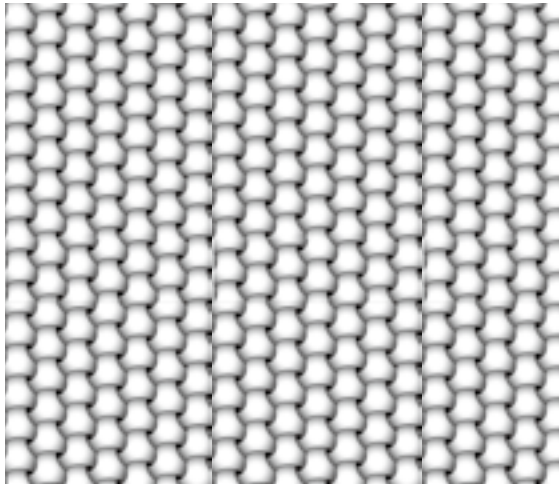


Geometric

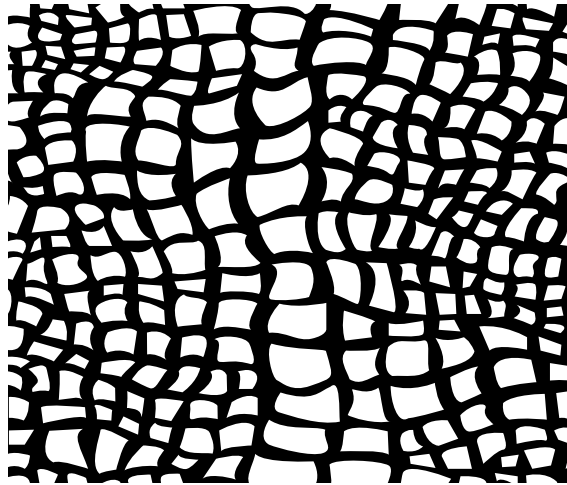




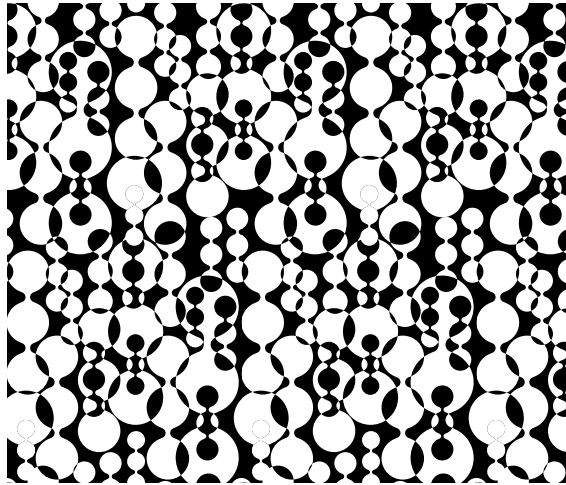
WOOD



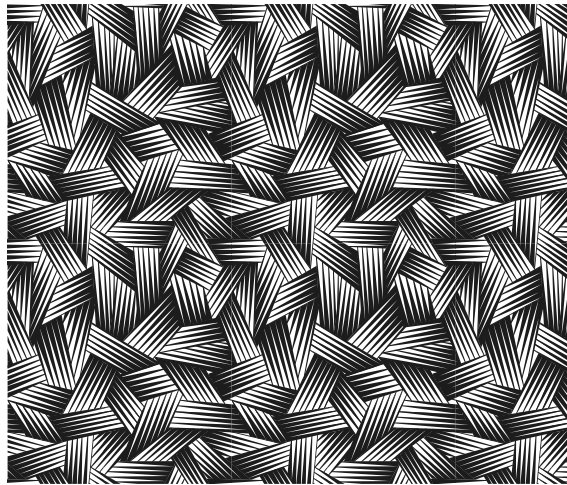
PLOT



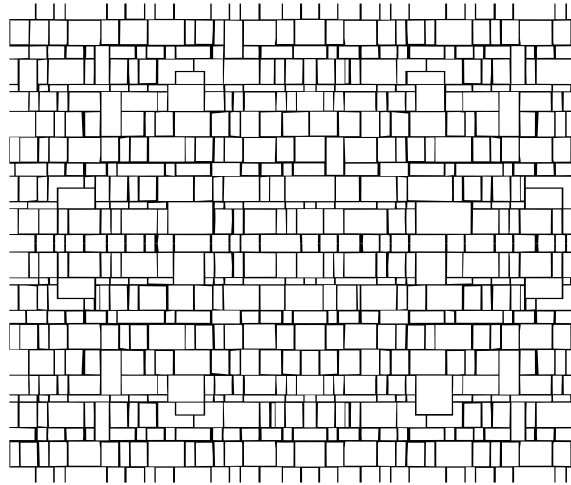
KALEIDOS



POP



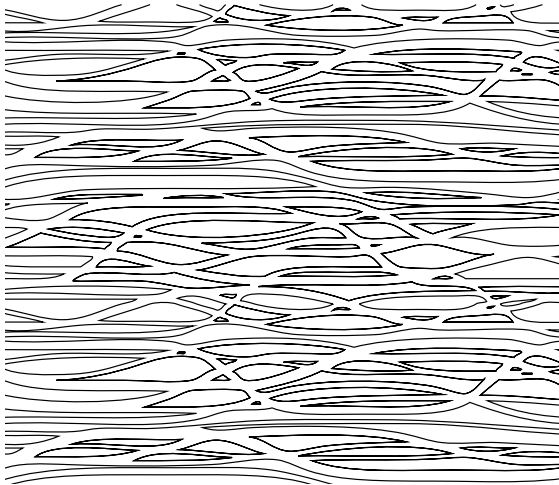
CROSS



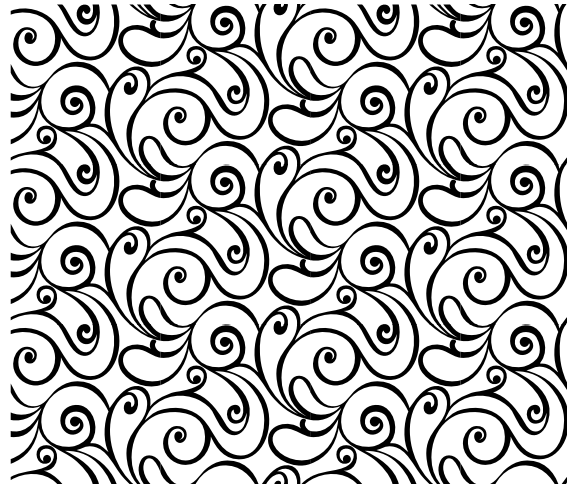
MOSAIC



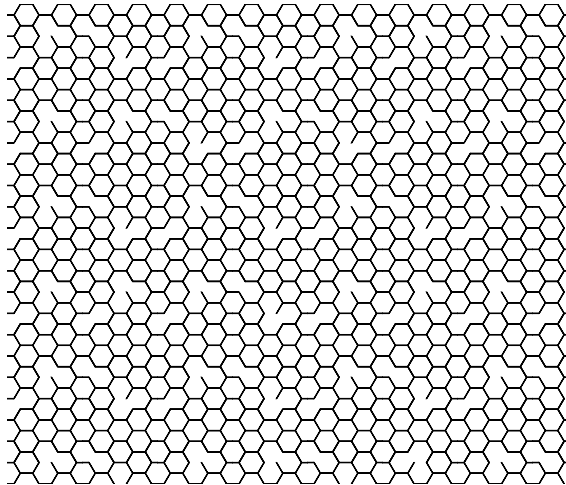
CALYPSO



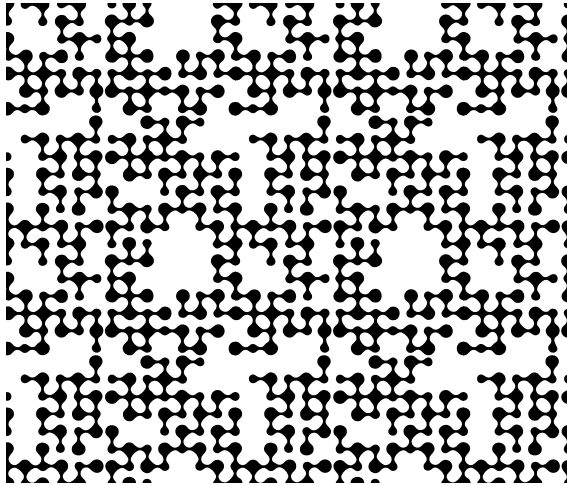
TANGLE



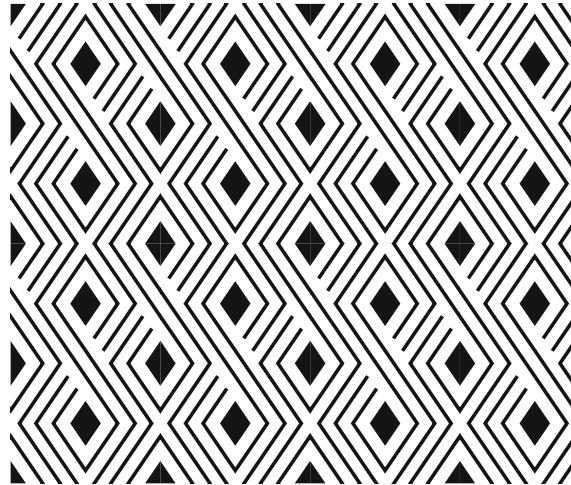
TWIRL



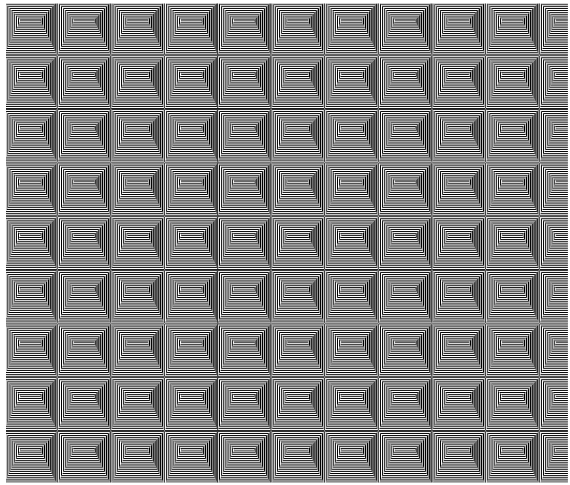
GRID



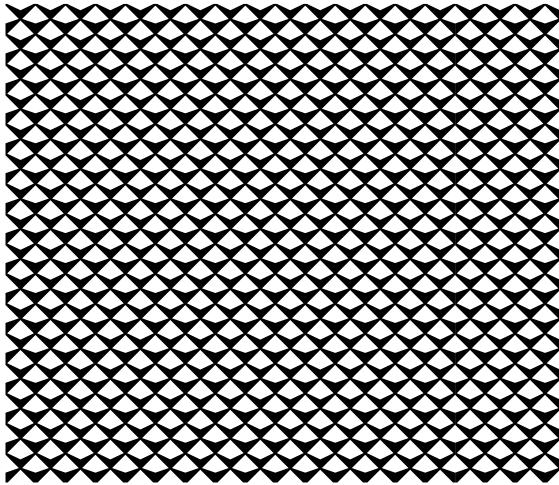
POINT



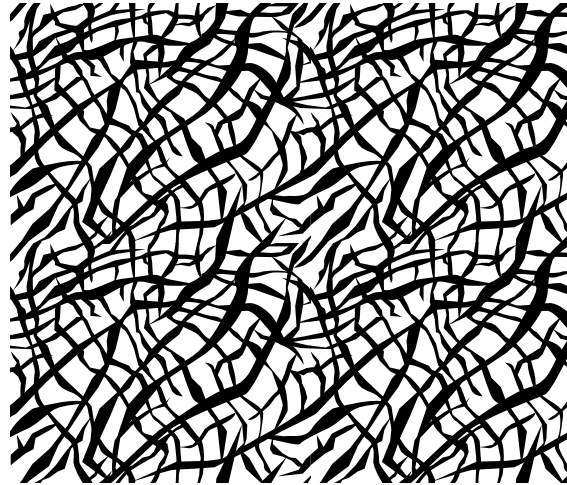
GEOMETRIC



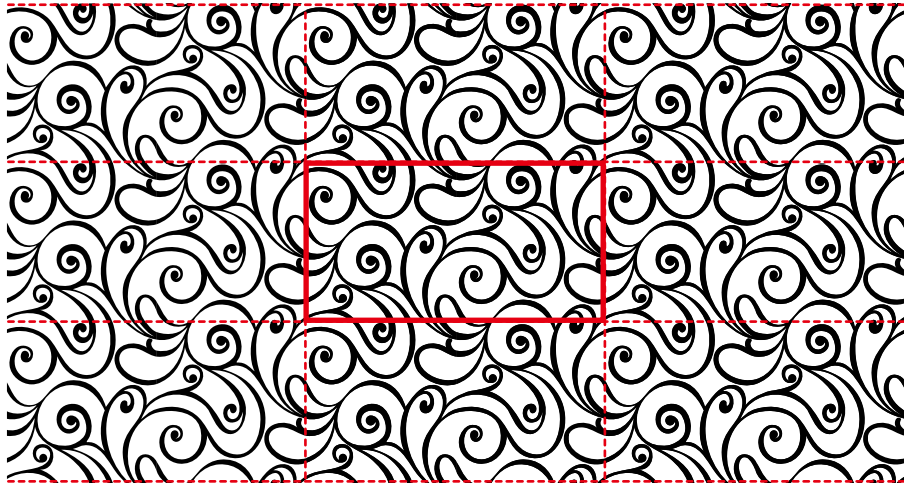
OPTICAL



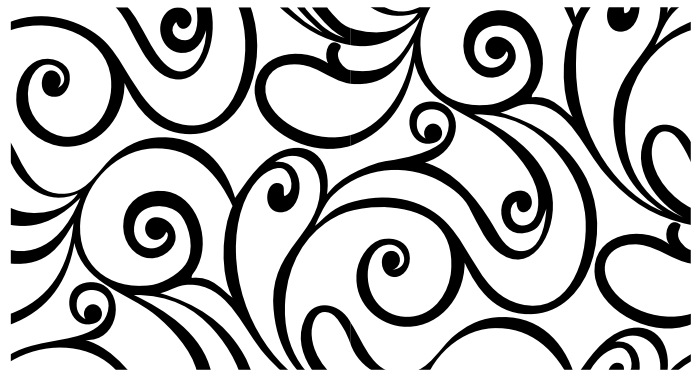
CARBON



SMASH



MODULARITY







JYC GLASS CO., LTD  
New Light Source Industrial Zone,  
Luocun Disteic, Foshan City ,  
GunagDong Pr, CHINA  
Tel. 0086 757 82135805, 806, 807, 808  
Fax. 0757 82135803  
[www.jycglass.com](http://www.jycglass.com)  
[jycglass@vip.163.com](mailto:jycglass@vip.163.com)  
[jycglass@163.com](mailto:jycglass@163.com)