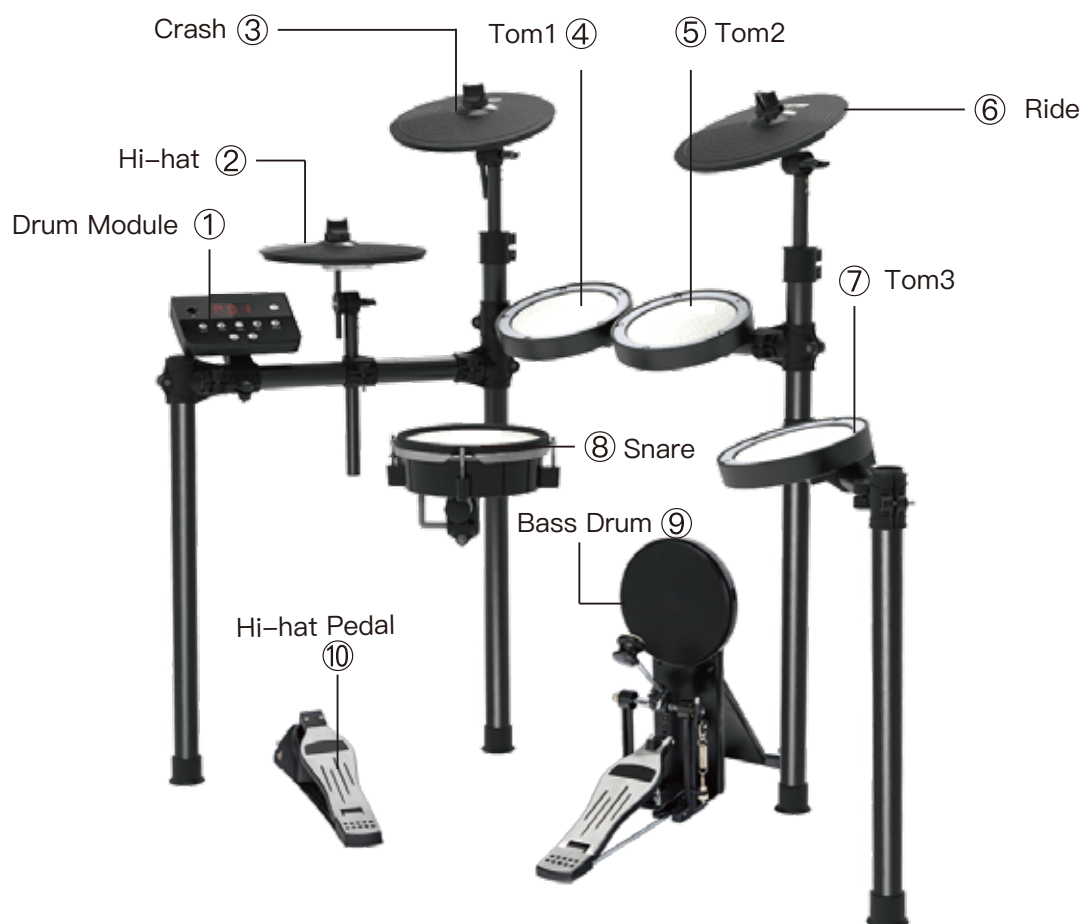


Drum Kit Installation Manual V1.10



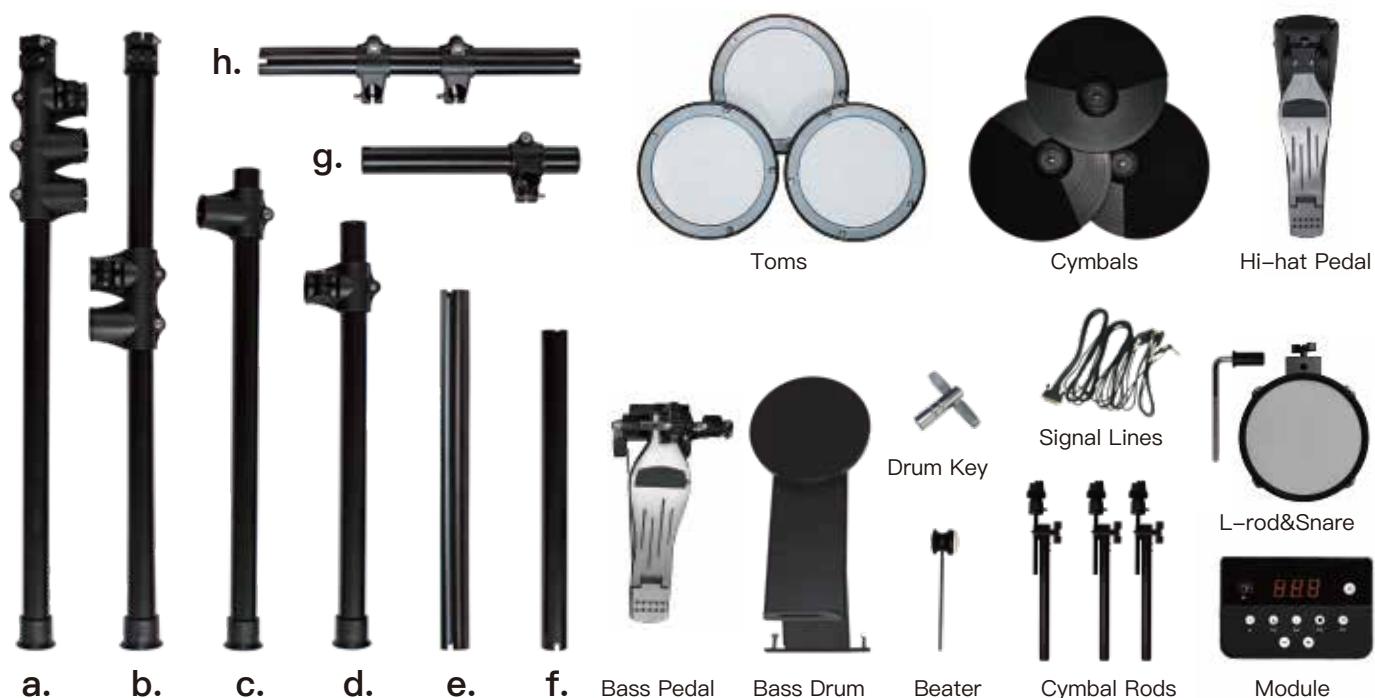
INSTALLATION INSTRUCTIONS

1. Installing tools

- ① A Knife (Provided by user) , to gash the box tapes.
- ② Drum Key (Please find it in the package), to install racks and adjust pads.

2. STEPS:

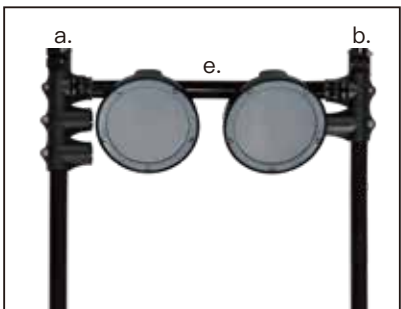
- ① Open box with knife and take out of all the parts as below picture . Count them with Parts List. (This picture is for reference only, the detailed parts please subject to the Parts List)



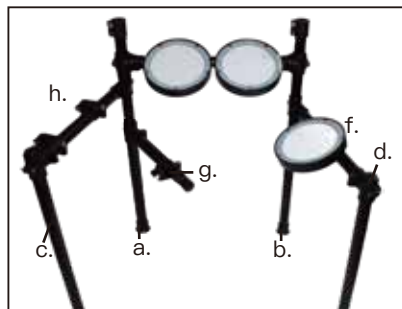
② Assemble the racks following to below pictures, fastening screw after the assembling.



(1) Install Toms in the Rack e and f.



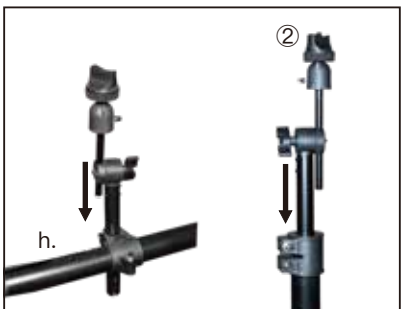
(2) Connect Rack a and b through Rack e.



(3) Connect the other racks as shown.



Note: While connect drum racks, please make sure the rack reaches the position as ① shown, and then fasten screw at position ② with drum key.

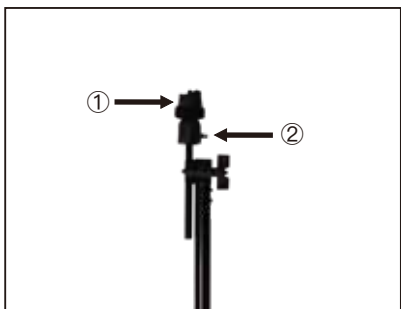


(4) Plug cymbal rods into Rack a, b and h.



(5) Assemble the module on Rack h.

③ Install cymbal pads to cymbal rods.



(1) Take off cymbal hat and fasten the screw of pillar stand.



(2) Place cymbal pad on the pillar stand. Note: Please put the groove of cymbal against the embossment of the stand.

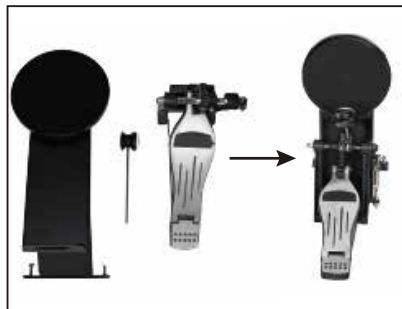


(3) Adjust cymbal pad to make the groove match pillar stand. Fasten cymbal hat after finishing.

④ Fix the L-rod to the rack g and then install the snare to the L-rod.



⑤ Assemble and adjust the felt beater with bass drum.



⑥ In the end, put the hi-hat pedal under hi-hat, connect all the pads and cymbals with module by signal lines.

※Tips: Please refer the User Guide for adjusting module, so that you can set up your own drumming parameters. There are 6 pcs of cable ties to help you organize these cables.