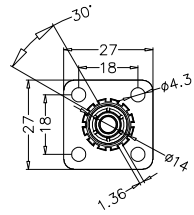
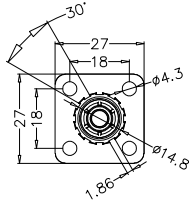


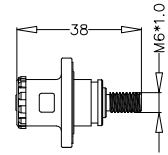
No	Description	Note	Date	Rev
1	First release	Charles	2021.11.25	A1



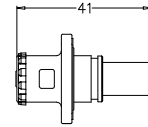
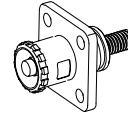
E6-M (0/R)



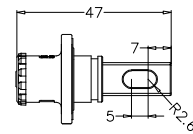
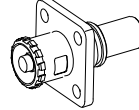
E6-M (B)



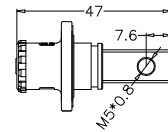
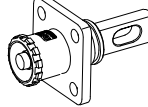
E6-M(B/O/R)-T-(0/1/2)



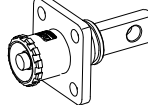
E6-M(B/O/R)-10/16/25-(0/1/2)



E6-M(B/O/R)-B-(0/1/2)



E6-M(B/O/R)-M5-(0/1/2)



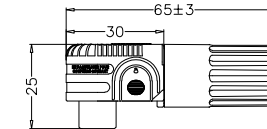
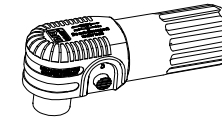
E6 MALE CONNECTOR

E6-M(B/O/R)-(B/T/M5/10/16/25)-(0/1/2)

B:BLACK
 O:ORANGE
 R:Red
 B:Busbar
 T:Threaded
 M5:M5x0.8
 10:10mm²crimp
 16:16mm²crimp
 25:25mm²crimp
 0: Blank No Keyway
 1: 30 °
 2: 45 °

NOTE:

- 1.Specification subject to change without notice.
- 2.Tolerance $\pm 1\text{mm}$
- 3.Proper Installation and fixation are required to prevent stress due to cable bending or hanging which will cause quality and electrical hazard issue.
- 4.Operation temperature:-40℃~+125℃
- 5.Get more information for www.niu-power.com or marketing@niu-power.com



E6 FEMALE 90° SHAPE CONNECTOR

E6-F(I / L)-(B/O/R)-(10/16/25)-(0/1/2)

I: 180° SHAPE

L: 90° SHAPE

B:BLACK
 O:ORANGE
 R:Red

10:10mm²crimp
 16:16mm²crimp
 25:25mm²crimp

0: Blank No Keyway
 1: 30 °
 2: 45 °

NIU POWER CORPORATION

TECHNICAL CENTER APPROVED
 TECHNICAL SUPPORT
 MARKETING@NIU-POWER.COM
 WWW.NIU-POWER.COM

NIU POWER

DRAWN: CHARLES

CHECKED: BINGO

APPROVED: YB

SHEET 1/1

PART NO. N10308

TITLE: E6 Series

UNIT: mm SCALE: * SIZE: A4 REV: A1