

A4 Max Solar Connector

Max 系列:光伏铜线连接器 A4 Max



A4 Max(1)
With NEC lock

A4 Max(2)
Without NEC lock



IEC 1500V
UL 1500V



UL: 6703
IEC: 62852



-40 °C ~ 90 °C



UL94-V0



IP 68



UV Resistance



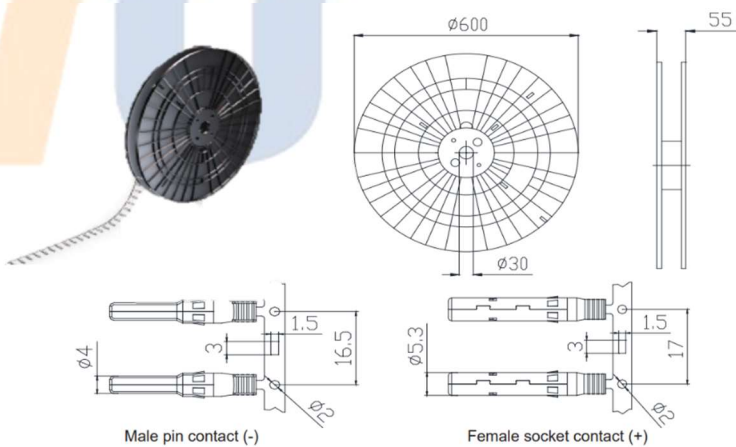
Product Overview 产品概述:

A4 Super connectors use high quality weather resistance materials that guarantee long-term reliability. A4-S could match 2.5mm² to 16mm² cables, it could be wildly used in different applications. The lower contact resistance and higher current transfer capability ensure high product efficiency. A4-S connectors have IP68 water-proof rating and can be used in a wide operating temperature range from -40 °C to 90 °C.

A4 Max 系列连接器采用高品质绝缘耐候材料, 可保障产品在户外长期安全使用。产品可适配 2.5 平方到 16 平方电线, 具有更广的应用范围。较小的接触电阻和大电流传输能力保障了产品长期使用的可靠性。A4 Max 系列连接器符合 IP68 额定标准, 且能够工作在 -40 °C 到 90 °C 极限环境。

Technical Data 技术参数:

Rated Voltage 额定电压	IEC 1500V\UL1500V
Certification 执行标准	IEC 62852; UL 6703
Rated Current 额定电流	25A/35A/40A/50A/70A
Ambient 工作温度	-40 °C up to +90 °C
Contact Resistance 接触电阻	≤0.25mΩ
Pollution Degree 污染等级	Class II
Protection Degree 保护等级	Class II
Fire Resistance 阻燃等级	UL94-V0
Rated Impulse Voltage 额定浪涌电压	16KV



Order Data 规格信息:

Connector Male Housing 连接器正极本体选型表		Connector Female Housing 连接器负极本体选型表			Male Terminal 负极导体选型表		Female Terminal 正极导体选型表	
TYPE 型号	Cable OD	TYPE 型号 (1)	TYPE 型号 (2)	Cable OD	TYPE 型号	Conduct Spec 导体规格	TYPE 型号	Conduct Spec 导体规格
A4-F6 F6 型本体	4.7mm~6.0mm	A4-M6 M6 型本体	A4-M6-2 M6-2 型本体	4.7mm~6.0mm	A4-MU U 型公端子	2.5mm ² ~6mm ²	A4-FU U 型母端子	2.5mm ² ~6mm ²
A4-F7 F7 型本体	5.6mm~7.0mm	A4-M7 M7 型本体	A4-M7-2 M7-2 型本体	5.6mm~7.0mm	A4-MO-10 O 型公端子	6mm ² ~10mm ²	A4-FO-10 O 型母端子	6mm ² ~10mm ²
A4-F8 F9 型本体	6.8mm~8.0mm	A4-M8 M8 型本体	A4-M8-2 M9-2 型本体	7.0mm~8.0mm	A4-MO-16 O 型公端子	16mm ²	A4-FO-16 O 型母端子	16mm ²
A4-F10 F10 型本体	8.0mm~10mm	A4-M10 M9 型本体	A4-M10-2 M10-2 型本体	8.0mm~10mm				



A4 Max Solar Connector

A4 Max 系列:光伏铜线连接器 A4 Max



IEC 1500V
UL 1500V



UL: 6703
IEC: 62852



-40℃~90℃



UL94-V0



IP 68



UV Resistance



A4 Max(1)
With lock

A4 Max(2)
Without lock



Male Connector Housing 连接器正极本体	Female Connector Housing 负极本体	Male Terminal 负极导电体	Female Terminal 正极导电体	Terminal Package 导电体包装
<input type="checkbox"/> F6:A4-F6	<input type="checkbox"/> F6:A4-M6-1/2	<input type="checkbox"/> MU:A4-MU	<input type="checkbox"/> FU:A4-FU	<input type="checkbox"/> B:Terminal in bags
<input type="checkbox"/> F7:A4-F7	<input type="checkbox"/> F7:A4-M7-1/2	<input type="checkbox"/> MO10:A4-MO-10	<input type="checkbox"/> FO10:A4-FO-10	<input type="checkbox"/> R:Terminal in Rolls
<input type="checkbox"/> F7:A4-F8	<input type="checkbox"/> F7:A4-M8-1/2	<input type="checkbox"/> MO16:A4-MO-16	<input type="checkbox"/> FO16:A4-FO-16	
<input type="checkbox"/> F10:A4-F10	<input type="checkbox"/> F10:A4-M10-1/2			

* Customized options available, for more information, please contact NIU Power's team: Marketing@niu-power.com.

Male Connector Housing
连接器负极本体: 3.5±0.5N*m

Female Connector Housing
连接器正极本体: 3.5±0.5N*m



Type U Male Terminal
U 型 公端子



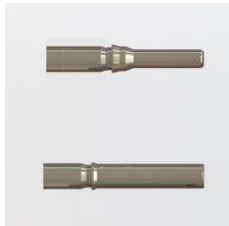
Type O Male Terminal
O 型 公端子



Type U Female Terminal
U 型 母端子



Type O Female Terminal
O 型 母端子



Package Info 包装信息:



Carton Dimension (cm)	Pack list	QTY	Gross Weight (kg)
59cm X 39cm X 20cm	Male Housing	500 pcs	16kg
	Female Housing	500 pcs	
	Male terminal	500 pcs	
	Female terminal	500 pcs	
Remark: 500 pairs in one carton package			

