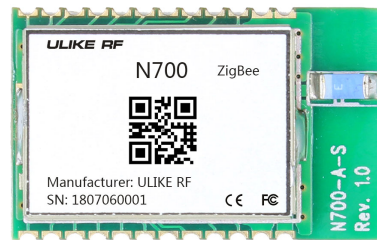


# N700

## CC2530 Zigbee RF Module



## INTRODUCTION

N700 is a low-cost and small size Zigbee RF module for transmitting and receiving digital data via radio frequency. All of the N700's electronics (including an antenna) reside on a single PCB, and all operational power is derived from a single supply voltage.

The transceiver module design consists of a TI CC2530 low-power, integrated UHF transceiver RF chip, The module used PCB antenna, and all IO pin are brought out. The module available frequency is from 2405Mhz to 2480mhz, The hardware is designed for maximum range.

## Technical specifications

### Hardware Information

Interfaces: UART, SPI, IIC  
Dimension: 25 x 15mm x 3mm  
Operating voltage: 3V  
Operating temperature: -30°C to +70°C

Consumption (Sleep): 1uA  
Consumption (RX): 17mA  
Consumption (TX): 35mA (4dBm)  
Wireless Micro-controller: CC2530  
Mounting: SMD

### Software

Asynchronous Transparent mode  
Low Power mode  
Secure mode

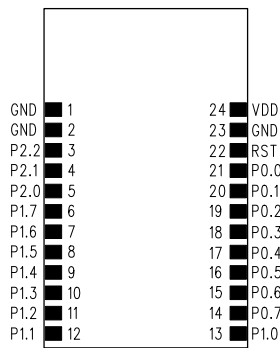
RSSI mode  
Serial bootloader  
Adjustable packet size

### Wireless Interface

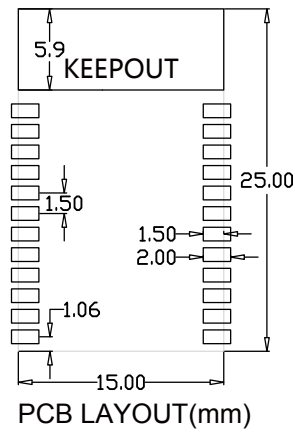
RF Antenna  
Frequency: 2405 to 2480MHz  
Modulation: QSSS  
RF deviation:  $\pm 10$  Khz

RF data rate: 250 kbps  
RF output power: up to 4dBm  
RF sensitivity: -96dBm

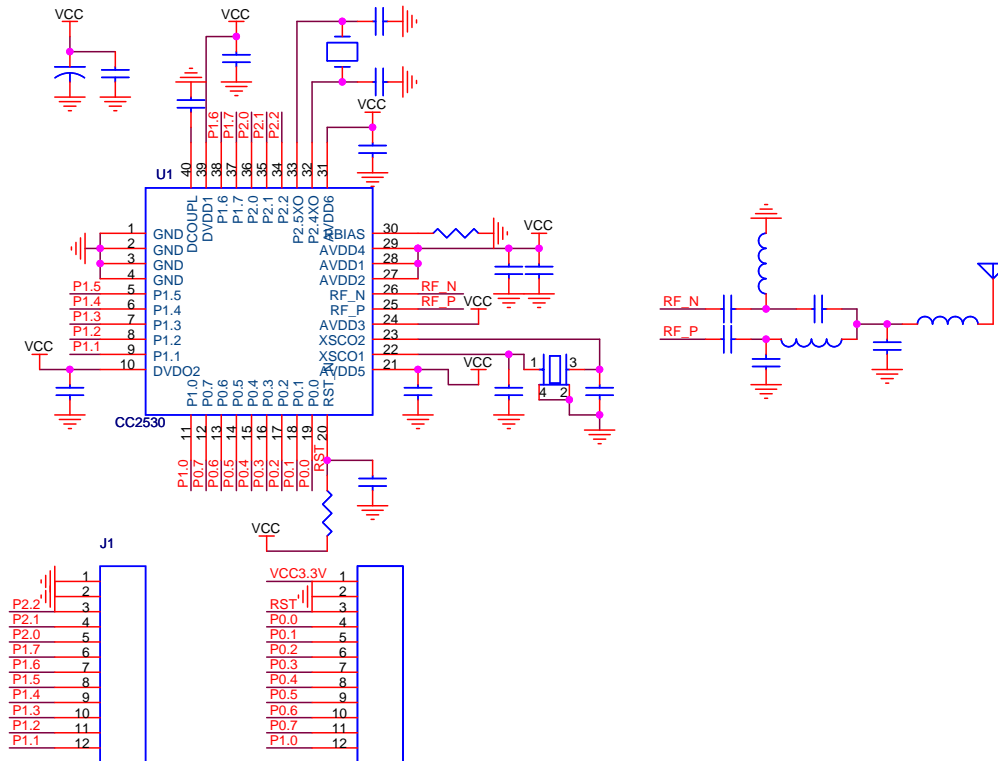
## Pin configuration & Dimensions



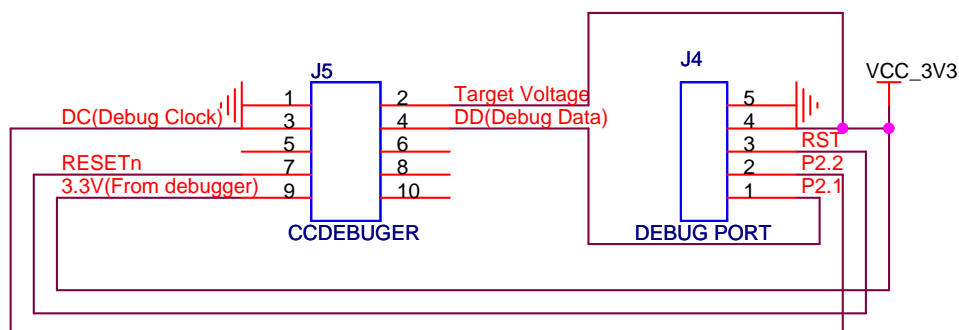
PIN define



## Circuit



## Debug interface



## **Part numbers**

N700-A-S-ZB      RF Module N700-A-S-ZB – 3mW – 2405Mhz

## **OTHER MODULES OF BANDS RANGE**

N707-A-P-ZB      RF Module N700-A-P – 3mW – 2405Mhz

## **Notice**

This N700 USB dongle have not any fireware,custom must use your own firmware. More about CC2530 information please see the CC2530 datasheet.

Please visit : [www.ti.com](http://www.ti.com)

## **Manufacturer**

SHENZHEN NANCHENG TECHNOLOGY CO.,LTD

## **Contact with us**

Shenzhen NanCheng Technology CO.,LTD  
Addr: Room307,Xinbaoyuan Building,N5179,District 74 Xinan Street,  
BaoAn District,Shenzhen,China 518101  
Sales department: +0086 755 29662101  
E-mail : [info@hkulike.com](mailto:info@hkulike.com)  
Web: [www.hkulike.com](http://www.hkulike.com)