



**常州市白鹭电器有限公司**  
CHANGZHOU EGRET ELECTRIC EQUIPMENT CO.,LTD.



**常州市星尔道国际贸易有限公司**  
CHANGZHOU EGRET MANUFACTURING CO.,LTD

Add : 4 TongShun Road,HengLin Town,WuJin District,ChangZhou City,JiangSu Province,China

Tel : +86-519-88781819 88789969

Fax : +86-519-88499193

Web : [www.egretmfg.com](http://www.egretmfg.com)

Domestic : [bailu@bailudianqi.com](mailto:bailu@bailudianqi.com)

International : [info@egretmfg.com](mailto:info@egretmfg.com)



## Pressure Switches Series

### Products Catalogue

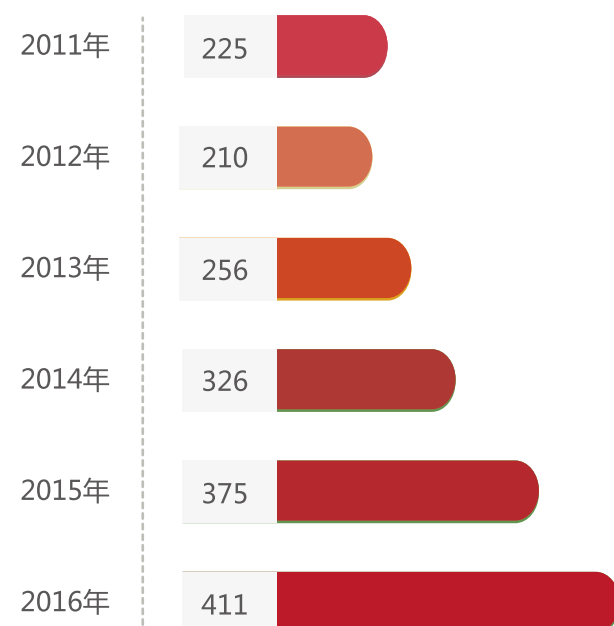
**常州市白鹭电器有限公司**  
CHANGZHOU EGRET ELECTRIC EQUIPMENT CO.,LTD.

**常州市星尔道国际贸易有限公司**  
CHANGZHOU EGRET MANUFACTURING CO.,LTD





压力控制器年产量（单位：万只）



### Cooperation Brand

Haier

清华同方  
TSINGHUA TONGFANG

Angel® 安吉尔®

GLOBE GROUP

CHIGO  
志高空调

ENERGY

YAIR® 扬子空调

Dun An  
盾安集团

BRIGHT  
贝莱特

Mammoth  
The Leader In Custom HVAC

Page 01	Company introduction
Page 03	Series of automatic reset pressure controllers
Page 04	Series of manual reset pressure controller
Page 05	BLPS-YK series pressure controller contour(unit:mm)
Page 06	Usage precautions of BLPS-YK series pressure controller
Page 07	Series pressure controller technique parameter row watch of BLPS-YK
Page 07	Commonly used pressure parameter reference(Unit:Mpa)
Page 08	BLFDF solenoid Valve Introduction
Page 08	BLFDF technical data
Page 09	BLFDF overall dimension drawings
Page 10	BLDXF one-way valve
Page 11	BLDXF magnetic check valve
Page 12	BLDXF(A) steel ball single direction valve
Page 13	Cut-off Valve for Refrigeration
Page 14	Sideward Cut-off valve
Page 15	BL-THG
Page 16	Qualification certificate





## Company introduction

Egret electric is located in Changzhou City, Jiangsu Province, China. Changzhou is a time-honored historic city with cultural deposits, and has been a national leading city in economy, culture, education and other aspects. The company has superior geographic location, and the transportation is very convenient. The company is in China's economically developed Yangtze Delta region, and beside No. 312 national highway, Beijing-Hangzhou Grand Canal, Beijing-Shanghai High-speed Railway and several other highways are through here. It takes only 2 hours by car from the company to Shanghai Pudong International Airport, and also only 1 hour to Nanjing Lukou International Airport via a direct airport freeway.

Founded in 1997, the company covers an area of 13,000 square meters, with a total construction area of 20,000 square meters. The company, with a spacious production environment, is a manufacturer specializing in pressure controller.

Pressure controller, another product of the company is mainly used for protection and control of high and low pressure on household, commercial and automotive air conditioners and other refrigeration systems, and can also be used for air compressors, spray machines, hydraulic presses and all other devices that need pressure control. The products are composed of automatic reset series, manual reset series, and high and low pressure series. Now the company's annual production has been up to 3 million, and such products are exported to East Asia, Middle East, Europe and other overseas markets.

The company first adopted the ISO9001:2008 quality system certification in the same industry. All its products have passed CQC, UL and TUV/CE quality certification and testing, so that customers at home and abroad would securely purchase Bailu brand of adhesive tapes and pressure controllers.

The company adheres to the service aim of "quality first, credit first and customer foremost", and the strategic approach of creating the brand relying on quality and seeking for development by innovation; the company provides you with the best value products and services wholeheartedly. Welcome sincerely domestic or overseas customers to our company to visit and study!

## Series of automatic reset pressure controllers

### Usage

- BLPS-YK series pressure controller functions to control pressure transmission power switch on/off based on the principle of instability jumping when the dish metal diaphragm is under uniform pressure load. It is mainly used for high or low pressure protection and control on household, commercial and automotive air conditioning refrigerating systems, and can also be used to protect and control high or low pressure on air compressor, hydraulic machines, various equipment and tools.

### Characteristic

- By using screw quick coupling or copper tube welded structure, the products are flexibly installed and easily used, with no special installation and fixing mode. Insert and wire-type electrical connectors can be selected by users.
- Unipolar single-throw or unipolar double-throw, normally open or normally closed switch contact structure options can be selected by users, while the sealed stainless steel sensor is safe and reliable.
- It can be manufactured according to any pressure value selected by users within the pressure range of 3-667PSI (0.02-4.6Mpa).

### Working principle

- When the medium (liquid or gas) pressure within the pressure system is above or below the rated security pressure, the dish metal diaphragm within the system jumps instantaneously, thus to push the switch contact to be connected or disconnected through a connecting rod.
- When the pressure drops to the rated recovery value, the dish metal diaphragm is instantaneously reset and the switch is automatically reset.

## Series of manual reset pressure controller

### Usage

Series of manual reset pressure controllers are suitable for overpressure protection of all types of air conditioning and refrigeration systems and a variety of equipment, tools and pressure systems with special requirements for pressure protection in a wide range of circumstances.



### Working principle

- When the system pressure is above the rated security pressure, the pressure induction disk within the sensor moves instantaneously, the security disk through a guide rod is driven to the lock location, while the security disk pushes the switch touch point to disconnect through the connected guide rod.
- When the pressure drops to the rated security pressure below, the induction disk is automatically reset, while as the security disk has been at the lock location and cannot be automatically reset, the switch touch point cannot be connected, and the system can return to the normal working condition only by pressing the external button and forcing to push the security disk lock to the switch touch point into the connected state.

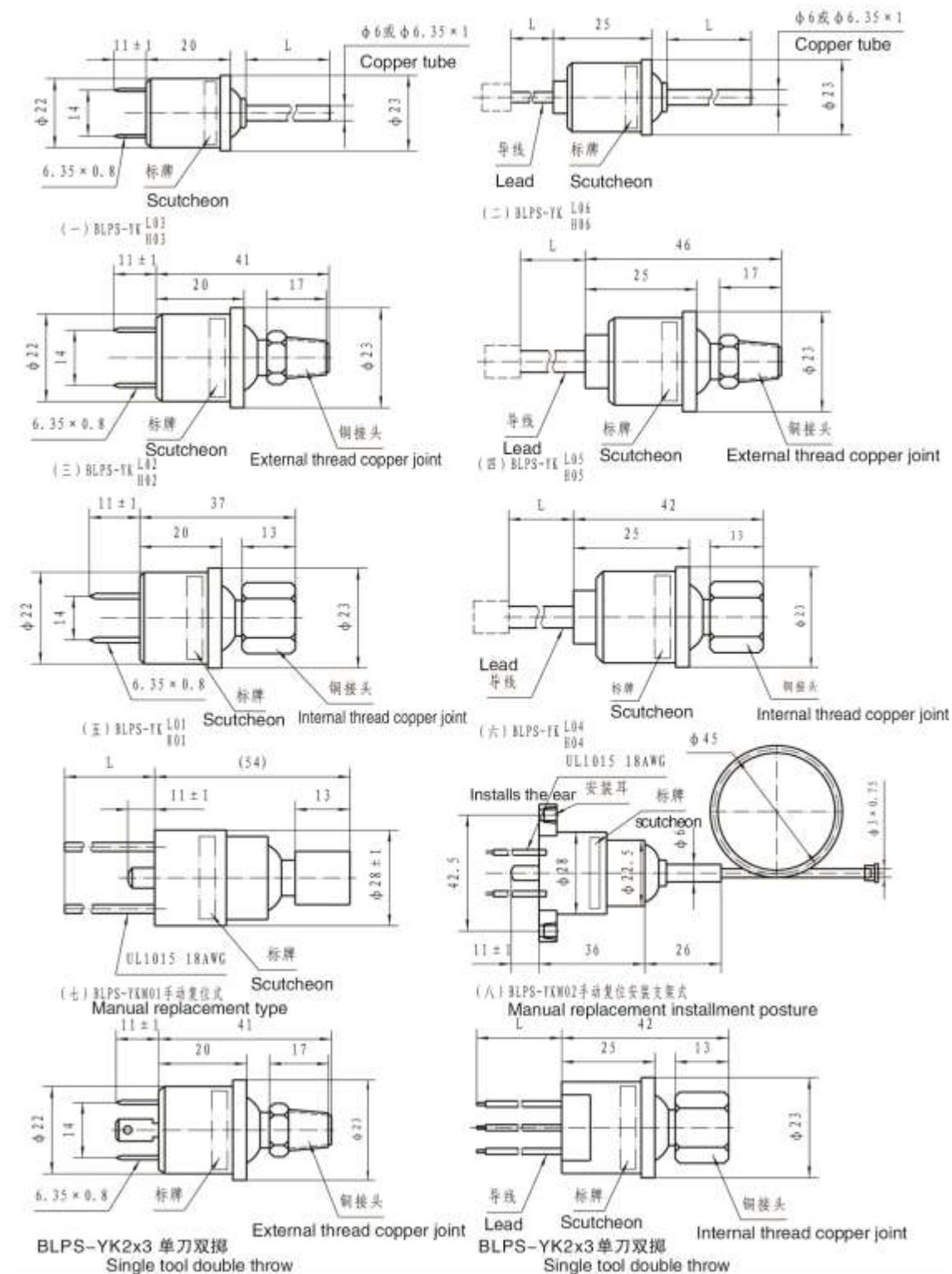
### Characteristics

- By using screw quick coupling or copper tube, and capillary tube welded connection structure, the products are easy and convenient to meet the varied needs for different users.
- The housing is installed by plate-loading (with installing ear) or thread (without additional fixing and installing mode), optional for users at will.
- The stainless steel sensor with sealed double security disk can ensure that the system is not misact to the switch affected by unexpected sensor failure, which would lead to start the machine and damage the machine. Thus, the products are particularly safe and reliable.
- Independent automatic disconnection and manual reset double-structure design greatly increases the security and reliability of pressure protection.





## BLPS-YK Series pressure controller contour(unit:mm)



Note: About takes over control, the attachment related size may according to user's need, the wire and end the specification by the user designated

## Usage precautions of BLPS-YK series pressure controller

For 290-667PSI (2-4.6Mpa) parameters in BLPS-YK series, a pressure limiting device should be installed during usage and testing to avoid impact of high pressure more than 1200PSI(8Mpa).

For 3-290PSI (0.02-2Mpa) parameters in BLPS-YK series, pressure limiting device should be installed during usage and testing to avoid impact of high pressure more than 700PSI(5Mpa) and to prevent high temperature damage when welding:

For BLPS-YK series, when welding process is used at the time of assembly, cool water should be used for welding protection (please refer to Figure 1).



Series pressure controller technique parameter row watch of BLPS-YK

NO.	Name	Features/setting value
1	Setting range of pressure range	3-667PSI/0.02-4.6mpa
2	Tolerance range of pressure switch	1.45-14.5PSI/0.01-0.1mpa
3	Contact form	Normal open,close
4	Contact capacity	AC240V,3A,AC120V,6A
5	Contact resistance	≤ 50 MΩ
6	Insulation resistance	≥100 MΩ(between terminal and housing)
7	Dielectric strength	No breakdown and flashing in 1min at AC1500V
8	Maximum burst pressure	No burst phenomenon in 1min at ≤5000PSI(34.5MPa) blast pressure
9	Gas tightness	No leakage (4.8mpa/1min)
10	Adaptive temperature	-30-80 degree
11	Life cycle	≥100000 times
12	Over pressure	Increase to 10mpa.No burst and leakage in 10mins



Commonly used pressure parameter reference(Unit:Mpa)

Code	Series	Opening	Closing	Pressure	Contact form
1	BLPS-YKH	2.5±0.06	2.0±0.05	High pressure	Normal close
2	BLPS-YKH	2.6±0.06	2.2±0.06	High pressure	Normal close
3	BLPS-YKH	2.8±0.06	2.2±0.06	High pressure	Normal close
4	BLPS-YKH	3.0±0.06	2.4±0.06	High pressure	Normal close
5	BLPS-YKL	0.05±0.03	0.15±0.04	Low pressure	Normal open
6	BLPS-YKL	0.15±0.04	0.3±0.05	Low pressure	Normal open
7	BLPS-YKL	0.3±0.05	0.45±0.05	Low pressure	Normal open
8	BLPS-YKL	0.02±0.01	0.15±0.04	Low pressure	Normal open

BLFDF Solenoid valve intrudution

APPLICATION

Mainly used in refrigeration systems:

- Air conditioners
- Dehumidifiers
- Ice machines
- Freezing machines

FEATURES

- Small sizes, Low power consumption
- Stability & Reliable performance

OPTIONS

- Connection sizes to fit your system
- Available with straight - thru or right angle design

CLASSIFICATION

- AC current normally closes valve
- DC current normally closes the valve

COMPONENTS

Composed of valve body & electroma coils -which control the closing of the valve by on-off electrom-agetic coils.

WORKING CONDITIONS

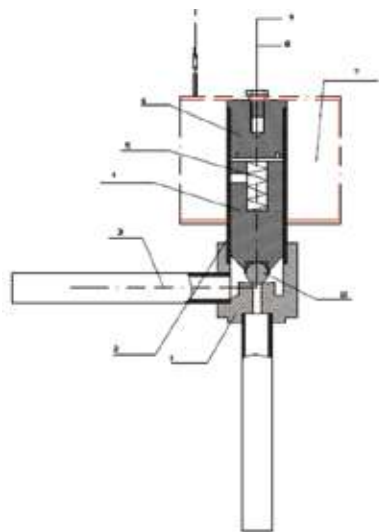
- Refrigerant : R22, R407C, R410A, etc.
- Maximum pressure : 4.5Mpa
- Voltage : range from 85% to 110% of rated voltage
- Medium temperature : -30℃ - 120℃
- Ambient temperature : -30℃ - 50℃
- Relative humidity : 95% or less



BLFDF Technical data

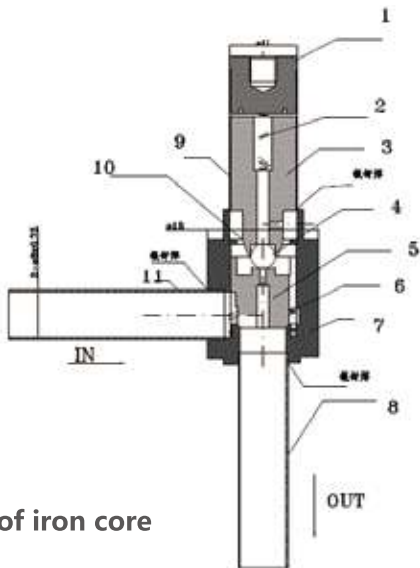
Model	Movement Pattern	Diameter [mm]	Flow	Internal Leakage [mL/min]	Actions pressure [Mpa]		Takeover OD
					Max	Min	
FDF-1-2A	Normally Close	Φ1.9	38	≤100	3.4	0	Φ6
FDF-1-3A		Φ3.0	110	≤300	3.4	0	Φ8
FDF-1-4A		Φ4.0	196	≤500	3.4	0	Φ6
FDF-1-6A		Φ6.0	367	≤500	3.4	0	Φ8
FDF-1-8A		Φ8.0	450	≤500	3.4	0	Φ8

## FDF overall dimension drawings



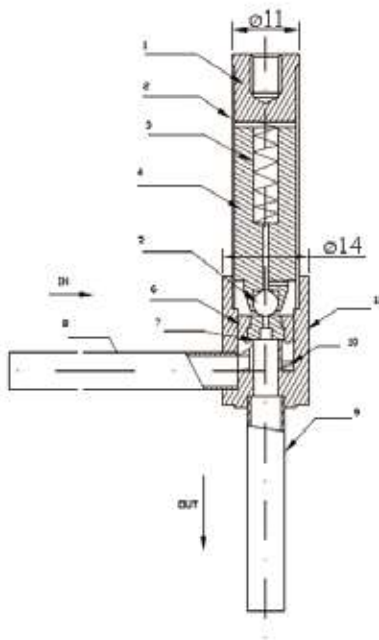
Drawing 1: FDF- 1 - 2A

- 1.Valve seat
- 2.Cover
- 3.Intake pipe/ Exhaust Pipe
- 4.Iron core
- 5.Spring of iron core
- 6.Plug
- 7.Electromagnetic coil
- 8.M5 hex angular cross screw
- 9.Spring washer
- Steel ball



Drawing 3: FDF- 1 - 6A

1. Plug
2. Spring of iron core
3. Iron core
4. Steel ball
5. Free spool
6. Spring of valve spring
7. Valve seat
8. Exhaust Pipe
9. Check block
10. Cover
11. Intake pipe



Drawing 2: FDF- 1 - 4A

1. Plug
2. Cover
3. Spring of iron core
4. Iron core
5. Steel ball
6. Free spool
7. Packed spool
8. Intake pipe/
- 9.Exhaust Pipe
10. Spring
11. Valve seat

## BLDXF One-way valve

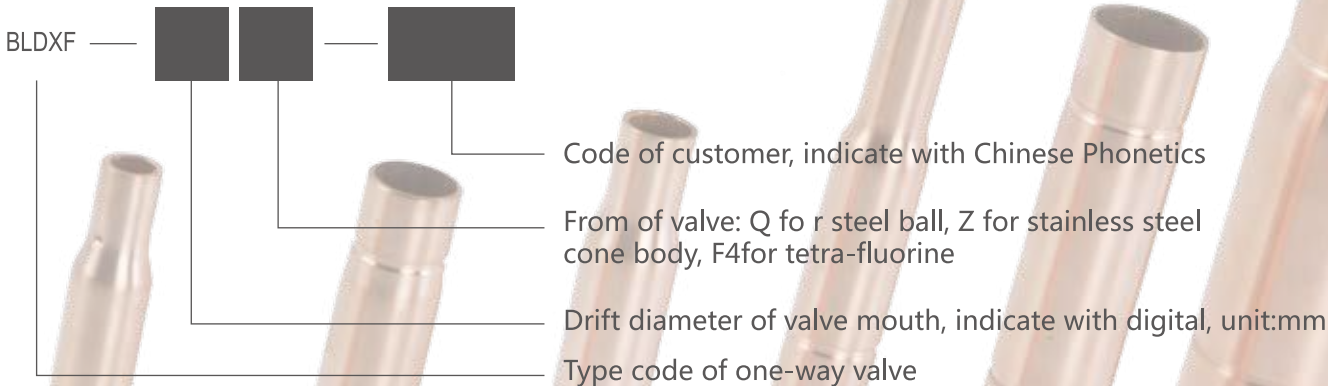
### Functions and applications

It is mainly used for air-condition, refrigerating machine and so on refrigeration system.When the compressor stopped, it can prevent the refrigerating fluid to flow back and when heating, it can increase the flow of freezing medium and raise heat efficiency.

### Main Technical Parameters

- Test pressure of pressure withstand: 4.41Mpa
- Test pressure of airtight:3Mpa
- Pressure difference opening at clockwise direction: 0.001-0.01Mpa
- Leaking amount at counterclockwise direction:Under 1Mpa air pressure, less than 500ml/min
- Flow: According to the drift diameter of valve mouth
- Suitable temperature of fluid: -30 ~ +120 °C

### Model Complied



### Main Specifications & Model

Type	Drift diameter of valve mouth (mm)	Pipe of valve body (mm)	Length valve body (mm)	Flow (L/min)
DXF-3.5Q	3.5	Φ12x1	100±1.5	3
DXF-3.5Z	3.5	Φ12x1	100±1.5	3
DXF-3.5F4	3.5	Φ12x1	100±1.5	3
DXF-5Z	5	Φ13.2x1	100±1.5	3.2
DXF-5F4	5	Φ13.2x1	100±1.5	3.2
DXF-6F4	6	Φ13.2x1	127±1.5	3.5
DXF-6.1Q	6.1	Φ13.2x1	127±1.5	3.5
DXF-8F4	8	Φ19x1.25	150±2	4

### Requirements of Installation

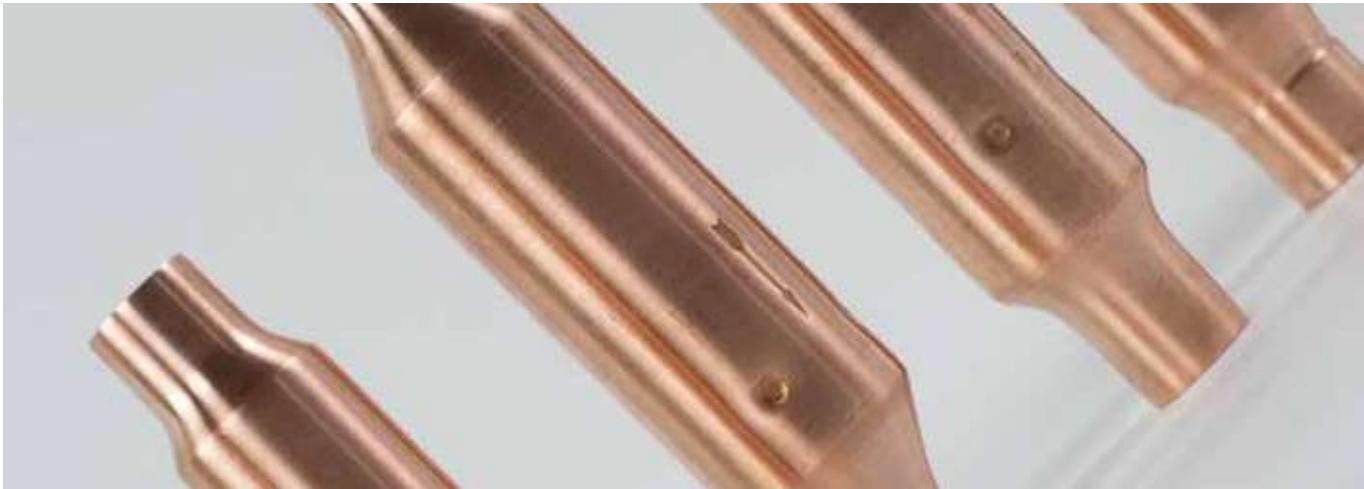
The valve body should be installed upright and vertical in accordance with the flow direction of cool medium. When the medium is in counterclockwise direction, the mouth of valve will be blocked through its self-weight and opposition pressure of cool medium.



BLDXF Magnetic check valve

Product Synopsis

The film an one-way valve of the DXF series adopt magnetish, a direction of film pack Place from absorb the structure design,thus make one-way valve door shut to match automati-cally, Have to circulate the resistance smallest,the discharge is big,inside leak several benefits of quantify zero etc. Characteristics,service life 10,000,000 times above,that valve be applicable to all to make the cold and the big and medium -sized hot pump central air condition systems.inside place the filter net.



Specifications

Type	Working Pressure	Pressure resistance	Opening pressure	Leaking amount
BLDXF-06	4.5	21.5	0.02	50
BLDXF-08	4.5	21.5	0.02	50
BLDXF-10	4.5	21.5	0.02	50
BLDXF-12	3.9	21.5	0.02	50
BLDXF-14	3.9	21.5	0.02	50
BLDXF-18	2.8	14.0	0.06	80
BLDXF-22	3.05	15.5	0.1	80
BLDXF-26	3.05	14.5	0.1	80
BLDXF-34	2.8	14.0	0.2	80
BLDXF-42	2.65	13.5	0.25	100
BLDXF-50	2.65	13.5	0.25	100

Dimensions

Type	Inner Diameter of Connection A		Diameter of Valve Body B		Length C	
	inch	mm	inch	mm	inch	mm
BLDXF-06	3/8	9.7	1-1/8	28.5x1.1	5	127.0
BLDXF-08	1/2	12.8	1-1/8	28.5x1.1	5	127.0
BLDXF-10	5/8	16.1	1-1/8	28.5x1.1	5	127.0
BLDXF-12	3/4	19.1	1-1/8	28.5x1.1	5	127.8
BLDXF-14	7/8	22.3	1-1/8	28.5x1.1	5	127.8
BLDXF-18	1-1/8	28.8	1-3/4	45x1.2	7-7/8	200.0
BLDXF-22	1-3/8	35	2-5/8	67x1.8	10	254.0
BLDXF-26	1-5/8	42	2-5/8	67x1.8	10	254.0
BLDXF-34	2-1/8	54	3-4/8	89x2.3	12	305.0
BLDXF-42	2-5/8	67	4-1/8	105x2.6	13	330.2
BLDXF-50	3-1/8	80	4-1/8	105x2.6	13	330.2

BLDXF(A) Steel ball single direction valve

Product Synopsis

The one-way valve of the DXF(A)steel ball type is the spheroid spring coil design,the metals and metals seal completely,the steel ball surroundings keeps a type to flow a design,make the valve physique of the small diameter outputs the big discharge,all metals design.Allow to install and circulate yes heat.

Specifications

Type	Max Working Pressure ( Mpa )	Pressure Endurance (Mpa)	Opening Pressure (Mpa)	Leaking Capacity (air)	Passing Capacity (cc/mm)	Pressure Droy Capacity ( tons )		
						R-12	R-12	R-12
BLDXF-6A	4.5	21.5	0.02	300	≥750	3.8	5.0	3.3
BLDXF-8A	4.5	21.5	0.02	300	≥750	6.8	9.0	6.0
BLDXF-10A	3.5	19.5	0.05	500	≥950	12.8	17.0	11.3
BLDXF-14A	3.5	19.5	0.05	500	≥1250	26.3	35.0	23.5
BLDXF-18A	2.8	14.0	0.065	800	≥1650	69.1	92.0	61.8

Dimensions

Type	Inner Diameter of Connection A		Diameter of Valve Body B		Length C	
	inch	mm	inch	mm	inch	mm
BLDXF-6A	3/8	9.7	1/2	12.7	3.8	95.0
BLDXF-8A	1/2	12.8	5/8	16.0	3.7	95.0
BLDXF-10A	5/8	16.0	7/8	22.2	4.5	114.3
BLDXF-14A	7/8	22.4	1-1/8	28.6	4.5	114.3
BLDXF-18A	1-1/8	28.8	1-3/8	35.0	5.0	127.0

Materials of Main Parts

Item	Material
Valve Seat	Hpb59-1
Copper Tube	Tp2
Spring	Stainless steel
Steel Ball	3Gr13





## Cut-off Valve for Refrigeration

### Introduction

- 1.The cut-off valve can be used in split-type air conditioner with R22, R407C, R134a, R410A as refrigerant, to connect indoor and outdoor units. A valve rod will be used to open and close the valve to control flow. The valve can be also used to vacuumize and add cooling agent.
- 2.Turn the valve clockwise to close and turn counter-clockwise to open the flow of refrigerant.

### Basic parameters

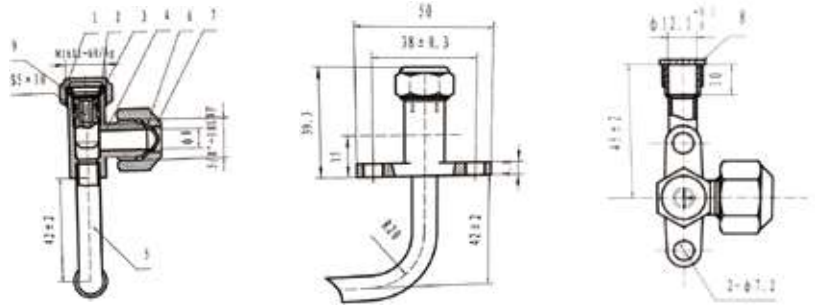
Specification	Valve diameter (mm)	Connector thread(in)	Over size (mm)	Matching power(HP)	Applicable refrigerant	Maximum working pressure(Mpa)	Temperature
BL-FJ4	Φ5	7/16-20UNF	Φ6.35	1~2	R22 R407C R410A R134a	4.2Mpa	-50℃~120℃
BL-FJ8	Φ8	5/8-18UNF	Φ9.52	1~5			
BL-FJ10	Φ9.8	3/4-16UNF	Φ12.7	1.5~10			
BL-FJ13	Φ12.5	7/8-14UNF	Φ16	2~12			
BL-FJ16	Φ16	17/16-14UNF	Φ19	5~8			

### Working condition

- 1.Refrigerant:R22, R407C, R134a and R410A
- 2.Medium temperature:-30℃~120℃
- 3.Maxium pressure: 4.2Mpa

### Instructions

- 1.Valve temperature should not exceed 120℃. When welding, please cool valve with water or wet cloth;
- 2.Customer should confirm the valve usage, specification, medium installation size, joint pipe shape and size, quantity and delivery date;
- 3.Matching power is just for reference, please do match test in advance;
- 4.Our products should be stored in a dry, ventilated warehouse and away from harmful gases.



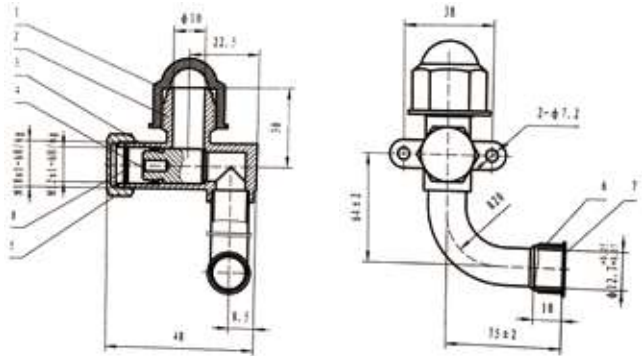
## Sideward Cut-off valve

### Introduction

1. The cut-off valve can be used in split-type air conditioner with R22, R407C, R134a, R410A as refrigerant, to connect indoor and outdoor units. A valve rod will be used to open and close the valve to control flow. The valve can be also used to vacuumize and add cooling agent.
- 2.Turn the valve clockwise to close and turn counter-clockwise to open the flow of refrigerant.

### Basic parameters

Specification	Valve diameter (mm)	Connector thread(in)	Over size (mm)	Matching power(HP)	Applicable refrigerant	Maximum working pressure(Mpa)	Temperature
BL-FJ4	Φ5	7/16-20UNF	Φ6.35	1~2	R22 R407C R410A R134a	4.2Mpa	-50℃~120℃
BL-FJ8	Φ8	5/8-18UNF	Φ9.52	1~5			
BL-FJ10	Φ9.8	3/4-16UNF	Φ12.7	1.5~10			
BL-FJ13	Φ12.5	7/8-14UNF	Φ16	2~12			
BL-FJ16	Φ16	17/16-14UNF	Φ19	5~8			

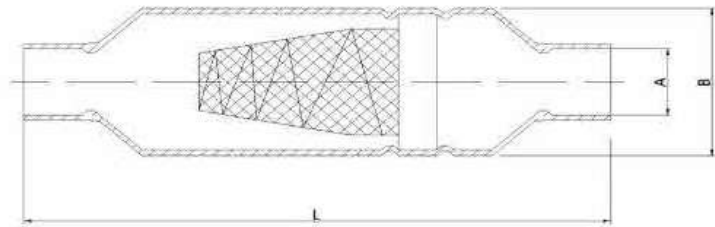




The bag filter built- in network than the average network has increased threefold, reducing the flow resistance, improved performance and so on.

Specifications

Type	Interface size	Length	Material	Pocket Network Mesh Number
BLTHG-9.6	Φ9.7	120	TP2Φ32*1	80
BLTHG-12.7	Φ12.8	120	TP2Φ32*1	80
BLTHG-16	Φ16.2	120	TP2Φ32*1	80
BLTHG-19	Φ19.2	120	TP2Φ32*1	80
BLTHG-22	Φ22.3	130	TP2Φ45*1.6	80
BLTHG-28	Φ28.7	130	TP2Φ45*1.6	80
BLTHG-35	Φ35.2	130	TP2Φ45*1.6	80
BLTHG-42	Φ41.4	130	TP2Φ45*1.6	80
BLTHG-54	Φ54.0	220	TP2Φ66*2.0	60



• TUV



• TUV&CE-压力开关

• TUV、CE



UL证书