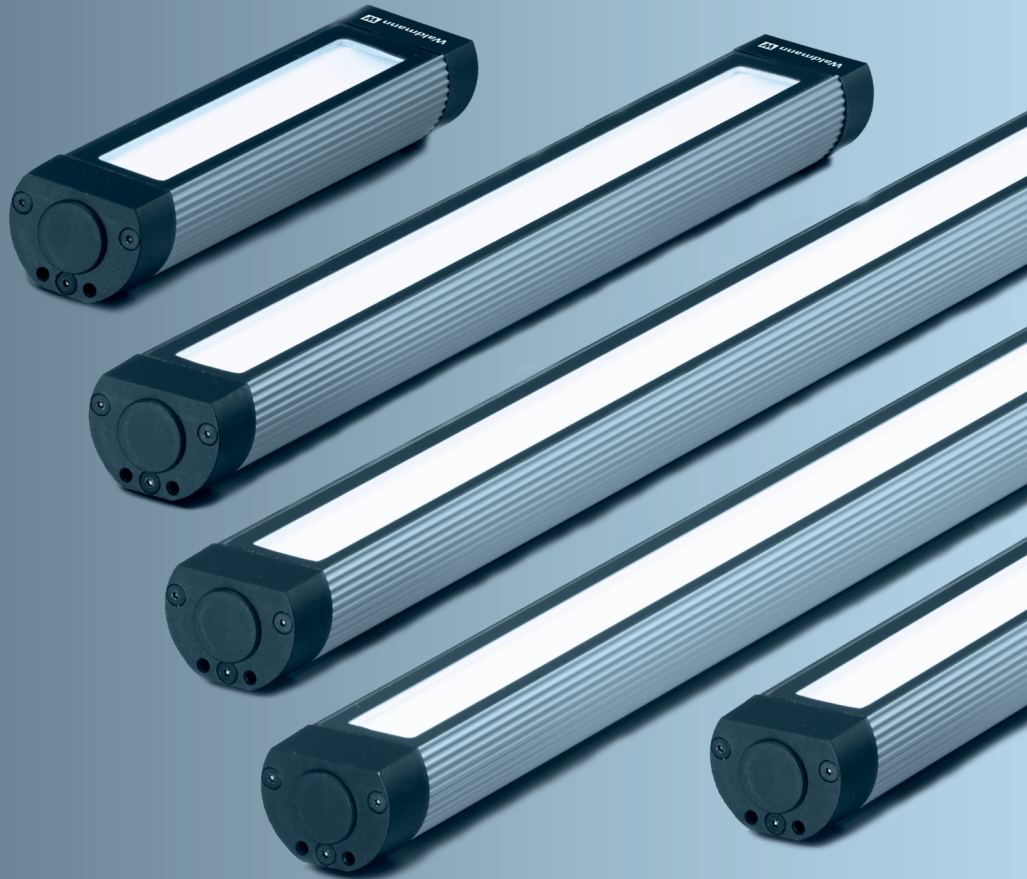


CN/EN

MACH LED PLUS.forty | 表面安装式灯具

LED





MACH LED PLUS.FORTY

创造更多可能 / FOR THE ADDED PLUS OF POSSIBILITIES.

在世界各地，每天都有成千上万盏沃达迈 (Waldmann) 灯具应用于严苛的工作环境中。技术先进、结构坚固的MACH LED PLUS.forty灯具应运而生。

MACH LED PLUS.forty采用高效、免维护的LED技术以及智能化照明技术，坚固耐用且兼具美观的外壳设计使MACH LED PLUS.forty一跃成为机械和系统照明工程的首选。

不同的长度和输出功率能够满足任何照明和室内环境条件，达到符合标准的照明要求。此外，灵活的适配组件、M12接头和连接线缆可快速便捷地完成灯具间的组合。

必要时，所有重要部件都可进行更换。这使得MACH LED PLUS.forty成为市面上可持续性最强的机床灯具之一。

- 超低眩光、光线均匀且过渡柔和
- 外径仅40mm，含4种长度和输出功率
- 铝制外壳，4mm厚的安全玻璃
- 侧边盖有着超强承载力，采用Viton®密封，保护等级高
- 耐受多种冷却剂和润滑剂，抗高温、冲击和振动
- M12密封接头
- 连接24V电压



Every day, hundreds of thousands of Waldmann luminaires are used for tough applications all over the world. They have provided the input for the technically sophisticated and robust MACH LED PLUS.forty.

The highly efficient and maintenance-free LED technology, clever lighting technology and extremely robust housing in the attractive design make MACH LED PLUS.forty the first choice for lighting engineering of machines and systems.

Different lengths and output levels enable standard-compliant lighting conditions for any lighting and room situation. Moreover, flexible adaptation options, M12 connector socket and cable ensure a fast and easy integration.

If required, all important components can be replaced. This makes MACH LED PLUS.forty one of the most sustainable machine luminaires on the market.

- Ultra low-glare, homogenous light with soft transitions
- Outer diameter 40 mm, four lengths and output levels
- Aluminium housing and 4 mm thick safety glass
- Side parts designed with a maximum capacity and protected Viton® gasket for a high system of protection
- Resistant to many coolants and lubricants, high temperatures, shocks and vibrations
- Encapsulated M12 connectors
- Connection to machine voltage of 24 V

MACH LED PLUS.forty



由于兼具多样化的照明特性，MACH LED PLUS.forty能够满足绝大部分的照明需求，甚至是极其有限的工作空间。

为狭小空间提供高效照明

外径40mm，最短长度仅为190mm，MACH LED PLUS.forty即使在极其狭小的空间同样能确保高照度。

它的单位输出功率非常可观：最短版本的单个灯具便能保证较小工作空间的标准照明。

为现代机器所设计的现代灯具

MACH LED PLUS.forty完美体现了最顶尖的技术：最前沿的LED技术、特别研发的光学系统以及由灯光工程师设计的现代外壳概念。

MACH LED PLUS.forty：是为高科技机器所设计的高科技灯具。

Thanks to different kinds of lighting characteristics, MACH LED PLUS.forty supports a variety of visual tasks, even if sometimes space is limited.

Maximum light for minimum space

With an outer diameter of 40 mm and a minimum length of 190 mm MACH LED PLUS.forty enables high illuminance even in the most restricted space.

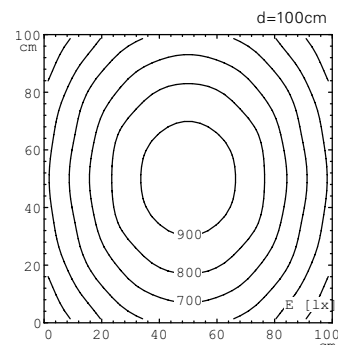
It's output density is very impressive: just a single luminaire of the shortest version enables standard-compliant illumination of smaller working spaces.

Modern light for modern machines

The MACH LED PLUS.forty reflects the state-of-the-art technology: the latest LED technology, specially developed optic systems and the most modern housing concept by the Engineer of Light. MACH LED PLUS.forty: high-tech light for high-tech machines.



MACH LED PLUS.forty



基于23W实例的照度

Illuminance taking 23W as an example

技术参数

特点:

- 含有12、27、42或57颗LED
- 色温: 中性白色 5000 K
- 显色指数: CRI > 70
- 无色阳极氧化铝外壳, 高性能黑色塑料侧盖和4 mm厚的安全玻璃
- 含多种支架配件可供选择, 便于集成
- 建议的最高环境温度: $T_{a_{max}} = 50\text{ }^{\circ}\text{C}$
- LED 使用寿命 (L 70) > 60000 h
- 抗振性10-55 Hz (振幅 0.35 mm); 耐冲击性高达 50 g
- IP67防护等级; 防触电保护等级III
- 采用M12插头连接, A编码

TECHNICAL DATA

Features:

- 12, 27, 42 or 57 x LED
- Colour temperature neutral white 5000 K
- Colour rendering CRI > 70
- Colourless anodised aluminium housing, black side parts made of high-performance plastic 4 mm thick safety glass
- Integration through various brackets from the accessories
- Maximum permissible ambient temperature $T_{a_{max}} 50\text{ }^{\circ}\text{C}$
- LED service life (L 70) > 60000 h
- Vibration resistant from 10 up to 55 Hz (amplitude 0.35 mm) Shock resistant up to 50 g
- System of protection IP67; protection class III
- Connection via M12 connector, A-coded

20–28 VDC

能耗	操作装置	尺寸	E_m/E_{max}^*	型号	订货号
5 W	—	A = 190 mm x 40 mm	142/206 lx ¹	MFA 320/750/S	CN0 009 000 - 006 416 00
11 W	—	A = 365 mm x 40 mm	340/492 lx ¹	MFA 780/750/S	CN0 010 000 - 006 416 03
17 W	—	A = 540 mm x 40 mm	524/741 lx ¹	MFA 1250/750/S	CN0 011 000 - 006 416 06
23 W	—	A = 715 mm x 40 mm	686/956 lx ¹	MFA 1670/750/S	CN0 012 000 - 006 416 09

* E_m = 中等照度; E_{max} = 最大照度; ¹ 测量范围100 cm x 100 cm/测量距离100 cm

20–28 VDC

OUTPUT	OPERATING DEVICE	DIMENSIONS	E_m/E_{max}^*	MODEL	ORDER NO.
5 W	—	A = 190 mm x 40 mm	142/206 lx ¹	MFA 320/750/S	CN0 009 000 - 006 416 00
11 W	—	A = 365 mm x 40 mm	340/492 lx ¹	MFA 780/750/S	CN0 010 000 - 006 416 03
17 W	—	A = 540 mm x 40 mm	524/741 lx ¹	MFA 1250/750/S	CN0 011 000 - 006 416 06
23 W	—	A = 715 mm x 40 mm	686/956 lx ¹	MFA 1670/750/S	CN0 012 000 - 006 416 09

* E_m = medium illuminance; E_{max} = maximum illuminance; ¹ Measuring field 100 cm x 100 cm/Measuring distance 100 cm

MACH LED PLUS.FORTY

可轻松集成的机床照明灯 / SIMPLY INTEGRATED MACHINE LUMINAIRES.



一款优秀的机械设备照明产品应该满足用户从安装到实际应用过程中会面临的所有需求。

支架灵活, 极易安装

为匹配灯具安装而特别设计的支架(见配件)能够对灯具的安装位置和照射范围进行灵活的调节。

多种配件选择, 满足各种工况

配有预装配线缆的M12连接插座(含多种长度)和不含线缆的定制款M12连接插座可供选择, 便于轻松集成。

A machine luminaire is only convincing if it satisfies the user from the installation through to the actual application.

Flexible bracket for easy mounting

Special brackets (accessories) have been developed for mounting of luminaires, they allow for flexible adjustment of the luminaires.

Sophisticated accessories for all instances


Both pre-assembled connection cables with M12 connector socket in various lengths and custom M12 connector sockets are available for particularly simple integration.

配件 / ACCESSORIES

整套灯具支架 / LUMINAIRE BRACKET-SET

	特征 / SPECIAL FEATURE	订货号 / ORDER NO.
	调节幅度 Adjustment range +/- 90°	408 001 105 - 006 419 63

M12 连接线缆 / CONNECTOR CABLE

	插头 / SOCKET	线缆 / CABLE	应用 / USE	订货号 / ORDER NO.
	4针 A编码	3 m; 2 x 0.75 mm ² 线缆直径约 5 mm	24 V	338 022 030 - 007 664 32
	4针 A编码	7 m; 2 x 0.75 mm ² 线缆直径约 5 mm	24 V	338 022 040 - 007 664 35
	4-pin A-coded	3 m; 2 x 0.75 mm ² Cable diam. approx. 5 mm	24 V	338 022 030 - 007 664 32
	4-pin A-coded	7 m; 2 x 0.75 mm ² Cable diam. approx. 5 mm	24 V	338 022 040 - 007 664 35

*插头颜色请以实物为准 / The colour of socket is for reference only, please adhere to the actual product.

HEADQUARTERS GERMANY

Herbert Waldmann GmbH & Co. KG
Postfach 50 62
78057 VILLINGEN-SCHWENNINGEN
GERMANY
Telephone +49 7720 601 - 0
Telephone +49 7720 601 - 100 (Sales)
Fax +49 7720 601 - 290
www.waldmann.com
sales.germany@waldmann.com

FRANCE

Waldmann Eclairage S.A.S.
Zone Industrielle
Rue de l'Embranchement
67116 REICHSTETT
FRANCE
Telephone +33 3 88 20 95 88
Fax +33 3 88 20 95 68
www.waldmann.com
info-fr@waldmann.com

ITALY

Waldmann Illuminotecnica S.r.l.
Via della Pace, 18 A
20098 SAN GIULIANO MILANESE (MI)
ITALY
Telephone +39 02 98 24 90 24
Fax +39 02 98 24 63 78
www.waldmann.com
info-it@waldmann.com

THE NETHERLANDS

Waldmann B.V.
Lingewei 19
4004 LK TIEL
THE NETHERLANDS
Telephone +31 344 631019
Fax +31 344 627856
www.waldmann.com
info-nl@waldmann.com

AUSTRIA

Waldmann Lichttechnik Ges.m.b.H.
Gewerbepark Wagram 7
4061 PASCHING/LINZ
AUSTRIA
Telephone +43 7229 67400
Fax +43 7229 67444
www.waldmann.com
info-at@waldmann.com

SCANDINAVIA

Waldmann Ljusteknik AB
Botvid Business Center
Fågelviksvägen 9
SE-145 53 Norsborg
Telephone + 46 8 990 350
Fax + 46 8 991 609
www.waldmann.com
info-se@waldmann.com

SWITZERLAND

Waldmann Lichttechnik GmbH
Benkenstrasse 57
5024 KÜTTIGEN
SWITZERLAND
Telephone +41 62 839 1212
Fax +41 62 839 1299
www.waldmann.com
info-ch@waldmann.com

USA

Waldmann Lighting Company
9 W. Century Drive
WHEELING, ILLINOIS 60090
USA
Telephone + 1 847 520 1060
Fax + 1 847 520 1730
www.waldmannlighting.com
waldmann@waldmannlighting.com

中国 I CHINA

沃达迈灯具制造(上海)有限公司
Waldmann Lighting (Shanghai) Co., Ltd.
中国上海市宝山区
长建路199号5号标准厂房A11a单元
邮编 200949
Part A11a, No. Five Normative Workshop
199 Changjian Road, Baoshan
CN-Shanghai, P.R.C. 200949
电话 I Phone +86 21 5169-1799
传真 I Fax +86 21 3385-0032
www.waldmann.com.cn
info-cn@waldmann.com

SINGAPORE

Waldmann Lighting Singapore Pte. Ltd.
77A Neil Road
SINGAPORE 088903
SINGAPORE
Telephone + 65 6275 8300
Fax + 65 6275 8377
www.waldmann.com
sales-sg@waldmann.com



www.waldmann.com.cn