

埃库斯®
AIKUSI

MORE THAN MEETS THE EYES
IRON VALVES & PIPE FITTINGS



Contact Us

HEBEI AIKUSI VALVE CO., LTD.

Shiqiao, Wangwu Town, Botou City, Hebei province, China.

International Business Manager

Mr Carl Zhao

Mob/Wechat: +8613863131718





COMPANY PROFILE

Hebei AIKUSI Valves Co., LTD, an ISO 9001-2008 certified company, committed to manufacturing valves, fittings & related products for water works, water treatment and HVAC applications.

AIKUSI consisting of Hebei AIKUSI Valves Co. Ltd. Botou TAILIDA Foundry Co., Ltd within our own factory and foundry. we have blast furnace, pre-coated sand mould, shot blasting machine, machining center and electrostatic epoxy resin coating line, given all of this, our products quality always under good control.

AIKUSI mainly produce Iron Resilient Seated Gate Valves (BS, DIN F4, F5, AWWA), Metal Seal Gate Valves, Butterfly Valves (Double eccentric double flanged, Concentric double flanged, Wafer type, Lug type), Check Valves (Swing type, Double Door Wafer), Y Strainers, Air Release Valve, etc. Supported by our many years' experience and expertise in this field, AIKUSI can also supply customized products.

Our philosophy is to offer the best possible products at affordable prices. Welcome to visit our factory before cooperating. AIKUSI is trying to satisfy you in all respects.



Warranty:

All components of AIKUSI valves and fittings are made of first class materials and are warranted for a period of eighteen (18) months from the date of delivery to be free from defects in material and workmanship (but not against reasonable wear and tear, damage caused by misuse, abrasion, corrosion, negligence, accident, faulty installation or by dispensing material incompatible with the valve) under normal use and to perform the service for which they are intended in a thoroughly reliable and efficient manner when properly installed and serviced.

During this period, AIKUSI will, at its discretion, repair or replace any part.

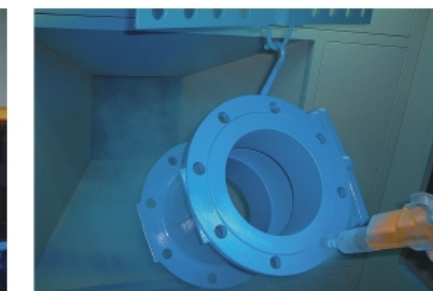
This warranty extends only to persons or organizations that purchase directly from AIKUSI or from one of its worldwide approved distributors.

PRODUCTIVE PROCESS

AIKUSI insist on using WRAS APPROVED powder



Our powder coatings technology meets your coatings needs



CASTING PREPARATION

Metal burrs and sharp edges of casting are cleaned up using grinding machines. Oil/Grease etc is cleaned up using special cleaning chemicals to ensure that the casting is free of all impurities and ready to accept coating. There are then sandblasted to create a rough texture on the surface of the casting to help provide a strong mechanical bond with the coating. Castings are visually inspected to ensure cleanliness and roughness of the surface.

APPLICATION OF POWDER COATING

Castings are then put in an oven to be heated to +280 Deg C. Using electrostatic spray guns, the hot castings (min. temperature 210 Deg C) are coated with Epoxy Resin Powder inside and outside creating a film of no less than 250 microns all round. After the castings are completely coated, these are then allowed to cool down resulting in formation of a solid layer of Epoxy Film on the entire valve body both interior and exterior.

QUALITY ASSURANCE

Inspecting cured valve body to ensure 'pin hole' has not occurred.

Coating thickness in all round should be verified as min. 250 microns through a thickness meter.

Using slide caliper to measure flange hole dimension, thickness of flange etc, insure all figures conform to relevant standards.

ASSEMBLING

Assembling Body, Bonnet, Wedge, Stem, Stem nut, O-rings, Gasket, Gland, Seal cover and Bolts into a semi-product.

HYDRO TEST

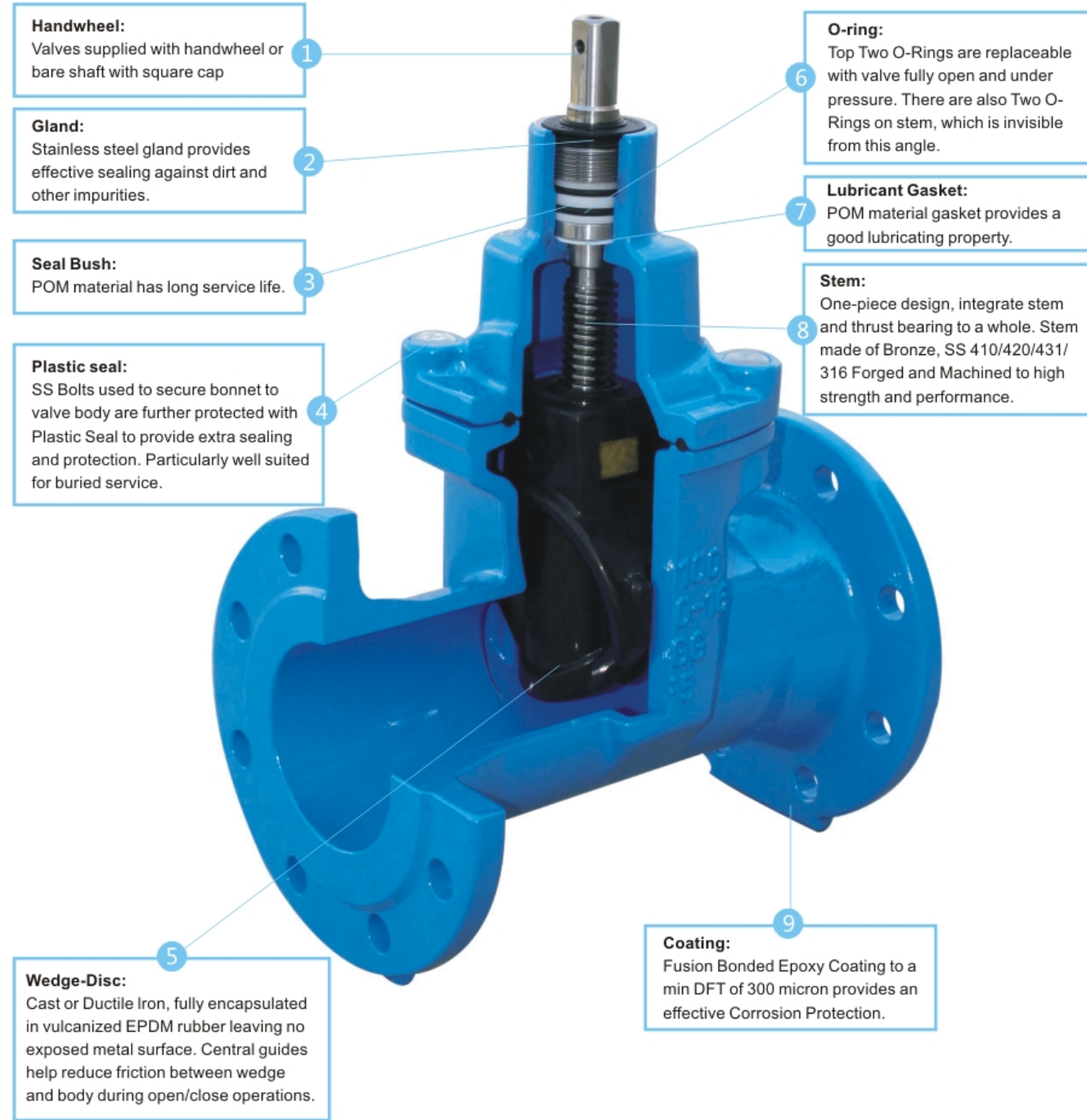
Separately doing shell and seal test strictly in accordance to relative standards. Defective products will be reworked or scrapped.

PACKING

The valves are separated in bubble bag before packing horizontally or vertically into the wooden crate. Each valve will be isolated with a piece of cardboard.

RESILIENT SEATED GATE VALVE DESIGN FEATURE

ADVANTAGE: All metal parts are isolated by POM components, thus reduce wear and increase of service life.



GATE VALVES



BS 5163 / BS 5150 NRS

SPECIFICATIONS

Size	DN40 – DN600
Class	PN10,PN16,PN25
Design	BS 5163
Face to Face	BS 5163/ISO 5752 3 Series
End Flange	BS EN 1092/BS 4505
Test	BS5163



DIN3352/EN1171 F4 NRS

SPECIFICATIONS

Size	DN40 – DN600
Class	PN10,PN16,PN25
Design	DIN 3352
Face to Face	DIN 3202 F4 / ISO 5752 14 Series
End Flange	DIN2501 / BS EN1092
Test	DIN 3230



DIN3352/EN1171 F5 NRS

SPECIFICATIONS

Size	DN40 – DN600
Class	PN10,PN16,PN25
Design	DIN 3352
Face to Face	DIN 3202 F5 / ISO 5752 15 Series
End Flange	DIN2501 / BS EN1092
Test	DIN 3230



Socket End NRS

SPECIFICATIONS

Size	DN50 – DN300
Class	PN10,PN16
Design	DIN 3352
Face to Face	ISO 5752 15 Series
End Flange	Suitable for PVC tube, Iron Pipe
Test	DIN 3230



Socket End NRS

SPECIFICATIONS

Size	DN50 – DN300
Class	PN10,PN16
Design	DIN 3352
Face to Face	ISO 5752 15 Series
End Flange	Suitable for PVC tube, Iron Pipe
Test	DIN 3230



AS 2638.2 NRS

SPECIFICATIONS

Size	DN50 – DN600
Class	PN10,PN16
Design	AS 2638.2
Face to Face	AS 2638.2 / ISO 5752 3 Series
End Flange	AS 4087 Figure B5(AS 2129 Tabled)
Test	AS 2638.2



BS5163/DIN3352 NRS

SPECIFICATIONS

Size	DN40 – DN600
Class	PN10,PN16,PN25
Design	BS 5163
Face to Face	BS 5163/ISO 5752 3 Series
End Flange	BS EN 1092/BS 4505
Test	BS5163



BS5163/DIN3352 NRS

SPECIFICATIONS

Size	DN40 – DN600
Class	PN10,PN16,PN25
Design	BS 5163
Face to Face	BS 5163/ISO 5752 3 Series
End Flange	BS EN 1092/BS 4505
Test	BS5163



AWWA C509 NRS

SPECIFICATIONS

Size	2" – 24"
Class	125 LBS – 150 LBS
Design	ANSI / AWWA C 509
Face to Face	ASME B16.10 / ISO 5752 3 Series
End Flange	ASME B16.1, ASME B16.42
Test	ANSI / AWWA C 509

GATE VALVE & BUTTERFLY VALVE



Metal Seat Gate Valve

SPECIFICATIONS

Size DN50 - DN800
Class PN10, PN16, PN25
Design BS5163 / DIN 3352
Face to Face BS5163 / ISO 5752 3 Series, 14 Series
End Flange BS EN1092 / DIN2501
Test BS5163 / DIN3230



RSGV with top Flange

SPECIFICATIONS

Size DN50 - DN800
Class PN10, PN16, PN25
Design BS5163 / DIN 3352
Face to Face BS5163 / ISO 5752 3 Series, 14 Series
End Flange BS EN1092 / DIN2501
Test BS5163 / DIN3230



DIN3352 Oversize NRS

SPECIFICATIONS

Size DN300 - DN1000
Class PN10, PN16
Design DIN 3352
Face to Face DIN 3202 F4 / ISO 5752 14 Series
End Flange DIN2501 / BS EN1092
Test DIN 3230



RSGV with Bypass

SPECIFICATIONS

Size DN350 - DN800
Class PN10, PN16, PN25
Design BS5163 / DIN 3352
Face to Face BS5163 / ISO 5752 3 Series, 14 Series
End Flange BS EN1092 / DIN2501
Test BS5163 / DIN3230



Electric Actuator for Gate Valve

SPECIFICATIONS

Power: AC380V / 50/60Hz
Environment temp: -20°C~65°C
Related humidity: <90% (25°C)
Environment : Without any high corrosion and explosion medium.
Working time: Within 10min.
Input/output signal: 4~20mA/0~10V/2~10V input/output (modulating type)
on/off signal (on/off type)
Housing protection class: IP65.(outdoor) / IP67



Adjustable Extension Spindle

SPECIFICATIONS

No. 1 Extension Spindle: 500mm - 800mm
No. 2 Extension Spindle: 850mm - 1150mm
No. 3 Extension Spindle: 1200mm - 1500mm
Customization is available



PIN-LESS WAFER / LUG TYPE

SPECIFICATIONS

Size: DN50 - DN600, 2" - 24"
Class: Up to PN16
Design: API 609, EN593, BS5155
Face to face: ISO5752, API609, EN558
End Flange: DIN2501, EN1092, B16.5
Working Temperature: -20°C - +200°C



PIN THROUGH FLANGE END TYPE

SPECIFICATIONS

Size: DN50 - DN1600, 2" - 64"
Class: Up to PN16
Design: API 609, EN593
Face to face: ISO5752, API609, EN558
End Flange: DIN2501, EN1092, B16.5
Working Temperature: -20°C - +200°C



ECCENTRIC DISC FLANGE TYPE

SPECIFICATIONS

Size: DN100 - DN1800, 4" - 72"
Class: Up to PN16
Design: API 609, EN593, BS5155
Face to face: ISO5752 13/14 Series
End Flange: DIN2501, EN1092
Working Temperature: -20°C - +200°C

CHECK VALVE & FITTINGS



DUAL PLATE CHECK TYPE

SPECIFICATIONS

Size: DN40 - Dn900, 1 1/2" - 36"
Class: Up to PN16
Design: API 594
Face to face: DIN3202 K3
End Flange: AS 2129, EN10, B16.1
Working Temperature: -20°C - +200°C



SWING CHECK VALVE

SPECIFICATIONS

Size: DN50 - DN400
Class: PN10, PN16
Design: BS 5153
Face to face: BS 5153
End Flange: EN1092 / BS 4505
Test: BS5153



Metal Sealing Swing Check Valve

SPECIFICATIONS

Size: DN50 - DN400
Class: PN10, PN16, PN25
Design: BS 5153
Face to Face: EN558-1
End Flange: BS EN1092-2
Test: EN12266



Non Return Ball Check Valve

SPECIFICATIONS

Size: DN50 - DN300
Class: PN10, PN16
Design: DIN 3352
Face to Face: DIN 3202 - F6
End Flange: EN1092 - 2
Test: EN12266



Air Release Valve

SPECIFICATIONS

Size: DN50 - DN300
Class: PN10, PN16
Design: DIN 2532 / DIN 2533
Face to Face: DIN 2533
Test: EN12266



Y Strainer

SPECIFICATIONS

Size: DN25 - DN300
Class: PN10, PN16
Design: DIN
Face to face: DIN3202 F1
End Flange: EN1092 / BS 4505
Working Temperature: -10°C - +200°C



Universal Coupling (Wide Range)

SPECIFICATIONS

Size: DN40 - DN800
Sleeve: Steel / Ductile Iron
End Ring: Ductile Iron (EN1563)
Bolt and Nut: Steel 8.8 Zinced / Dacro
Gasket: EPDM / NBR (EN681)
Coating: Fusion Bonded Epoxy / Rilsan (EN14901)



Flange Adaptor (Wide Range)

SPECIFICATIONS

Size: DN40 - DN800
Body: Ductile Iron (EN1563)
End Ring: Ductile Iron (EN1563)
Bolt and Nut: Steel 8.8 Zinced / Dacro
Gasket: EPDM / NBR (EN681)
Coating: Fusion Bonded Epoxy / Rilsan (EN14901)
Bolt Torque: M12: 55-65NM M14: 95-110NM
Pressure: Water / 16 BAR, Gas / 6 BAR

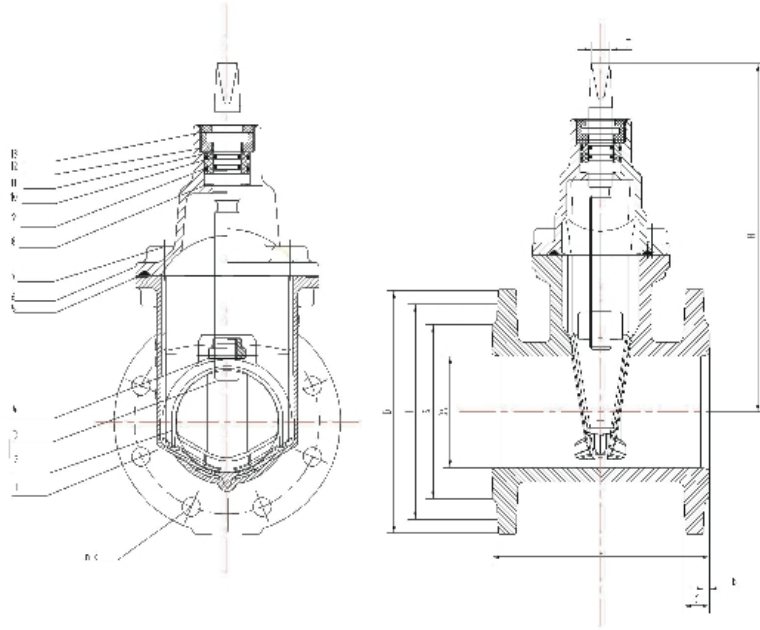


Dismantling Joint

SPECIFICATIONS

Size: DN50 - DN2000
Class: PN10, PN16
Body/Retainer: Ductile Iron
Pipe: Ductile Iron
Ring: EPDM / NBR
Stud: Steel Zinced / Dacro
Coating: Fusion Bonded Epoxy

BS 5163 RESILIENT SEATED GATE VALVE



STANDARD MATERIALS OF MAIN PARTS

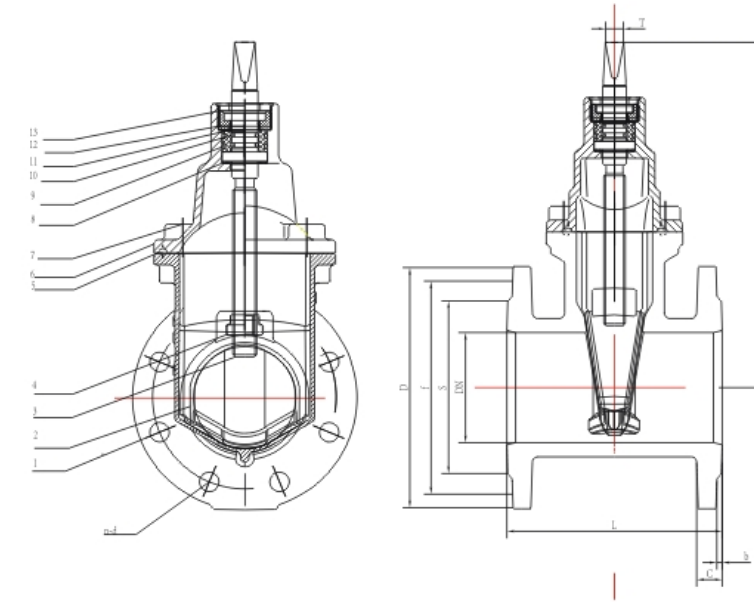
Sr No.	PART NAME	MATERIAL
1	Body	GGG50
2	Disc	GGG50+NBR/EPDM
3	Stem	2Cr13
4	Stem Nut	Brass
5	Gasket	NBR/EPDM
6	Bonnet	GGG50
7	Bolts	CS or SS
8	Washer	PA
9	O ring	NBR/EPDM
10	O ring	NBR/EPDM
11	Seal Cover	PA
12	Gland	2Cr13 or 304SS
13	Weather Cover Seal	PA

Hydro test detail

DN mm	40~600		
Normal Pressure Mpa	1.0MPa	1.6MPa	2.5MPa
Shell Test Mpa	1.5MPa	2.4MPa	3.75MPa
Seat test Mpa	1.1MPa	1.76MPa	2.75MPa
Work temperature	≤80°C		
Medium	water, waste, water		
Material	Ductile iron		

DN	H	T	BS5163 L	EN1092-2									
				D		F		S		b	C		n-d
				1.0MPa	1.6MPa	1.0MPa	1.6MPa	1.0MPa	1.6MPa		1.0MPa	1.6MPa	
40	198	14	178	165		110		84		3	19		4-19
50	205	14	178	165		125		99		3	19		4-19
65	241	17	190	185		145		118		3	19		4-19
80	260	17	203	200		160		132		3	19		8-19
100	312	19	229	220		180		156		3	19		8-19
125	360	19	254	250		210		184		3	19		8-19
150	403	19	267	285		240		211		3	19		8-23
200	497	24	292	340		295		266		3	20		8-23 12-23
250	580	27	330	400		350	355	319		3	22		12-23 12-28
300	670	27	356	455		400	410	370		4	24.5		12-23 12-28
350	750	27	381	505	520	460	470	429		4	24.5	26.5	16-23 16-28
400	910	32	406	565	580	515	525	480	489	4	24.5	28	16-28 16-31
450	970	32	432	615	640	565	585	530	548	4	25.5	30	20-28 20-31
500	1070	36	457	670	715	620	750	582	609	4	26.5	31.5	20-28 20-34
600	1215	36	508	780	840	725	770	682	720	5	30	36	20-31 20-37

DIN F4/F5 RESILIENT SEATED GATE VALVE



STANDARD MATERIALS OF MAIN PARTS

ITEM	PART NAME	MATERIAL
1	Body	GGG50
2	Disc	GGG50+NBR/EPDM
3	Stem	2Cr13
4	Stem Nut	Brass
5	Gasket	NBR/EPDM
6	Bonnet	GGG50
7	Bolts	CS or SS
8	Washer	PA
9	O ring	NBR/EPDM
10	O ring	NBR/EPDM
11	Seal Cover	PA
12	Gland	2Cr13 or 304SS
13	Weather Cover Seal	PA

Hydro test detail

DN mm	40~600		
Normal Pressure Mpa	1.0MPa	1.6MPa	2.5MPa
Shell Test Mpa	1.5MPa	2.4MPa	3.75MPa
Seat test Mpa	1.1MPa	1.76MPa	2.75MPa
Work temperature	≤80°C		
Medium	water, waste, water		
Material	Ductile iron		

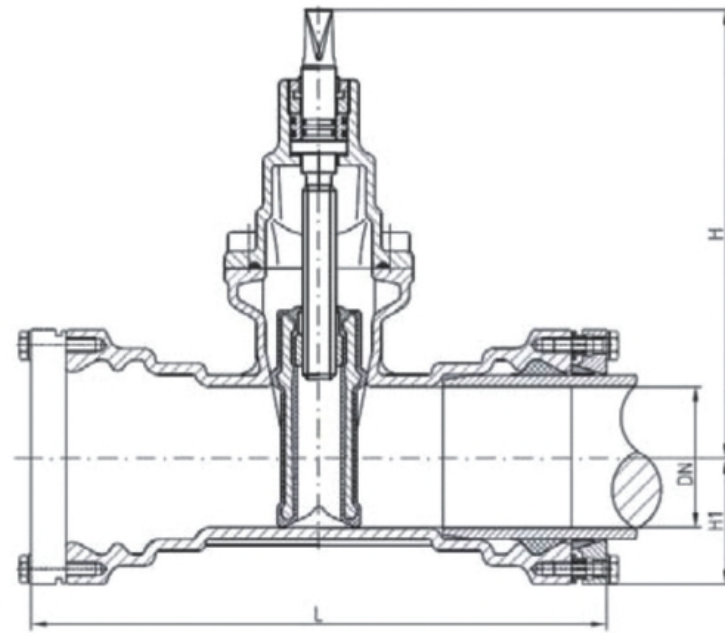
DN	H	T	DIN3202		EN1092-2									
			F4	F5	D		F		S		b	C		n-d
			L		1.0MPa	1.6MPa	1.0MPa	1.6MPa	1.0MPa	1.6MPa		1.0MPa	1.6MPa	
40	198	14	140	240	150		110		84		3	19		4-19
50	216	14	150	250	165		125		99		3	19		4-19
65	260	17	170	270	185		145		118		3	19		4-19
80	286	17	180	280	200		160		132		3	19		8-19
100	325	19	190	300	220		180		156		3	19		8-19
125	389	19	200	325	250		210		184		3	19		8-19
150	428	19	210	350	285		240		211		3	19		8-23
200	532	24	230	400	340		295		266		3	20		8-23 12-23
250	636	27	250	450	395	405	350	355	319		3	22		12-23 12-28
300	744	27	270	500	445	460	400	410	370		4	24.5		12-23 12-28
350	840	27	290	550	505	520	460	470	429		4	24.5	26.5	16-23 16-28
400	970	32	310	600	565	580	515	525	480	489	4	24.5	28	16-28 16-31
450	1045	32	330	650	615	640	565	585	530	548	4	25.5	30	20-28 20-31
500	1150	36	350	700	670	715	620	750	582	609	4	26.5	31.5	20-28 20-34
600	1295	36	390	800	780	840	725	770	682	720	5	30	36	20-31 20-37

SOCKET END RESILIENT SEATED GATE VALVE

Resilient Seated with Lockable Socket for HDPE pipes

Pressure Rating: PN16

Material of Construction: Ductile Cast Iron GGG 40/50



Size	Dimensions		
DN mm	L mm	H ₁ mm	H mm
80	315	76	290
100	334	76	340
150	392	120	460
200	405	150	540

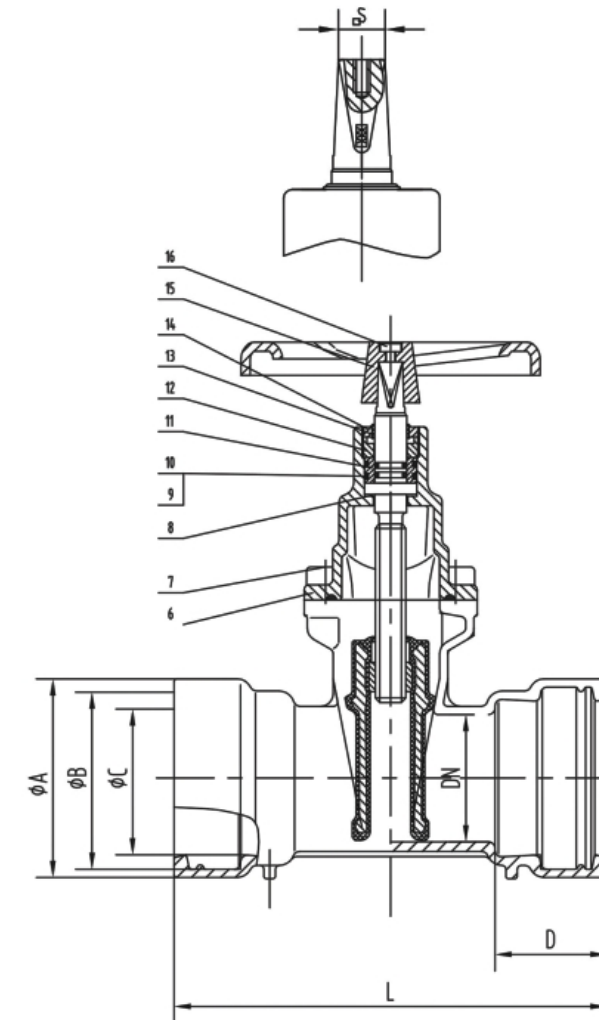
Materials / Equipment

Body	GGG40/50
Wedge	GGG rubber lined
Wedge rubber sealing	EPDM or NBR
Bonnet	GGG 40/50
Stem	Stainless steel 1.4021
Stem nut	Bronze
Stem guide bush	Bronze
O-rings	EPDM or NBR
Sliding disc	POM
Tightening ring	GGG 40/50
Clamping ring	Bronze
Gasket	EPDM or NBR
Corrosion protection	Epoxy Powder coated PAL 5015
Handwheel	DI

Range of application: Potable water

Size DN	Pressure rating PN	Hydrotest pressure in bar		Admissible working pressure in bar up to 70°C
		Body	Seat	
80-200	16	24	16	16

SOCKET END RESILIENT SEATED GATE VALVE



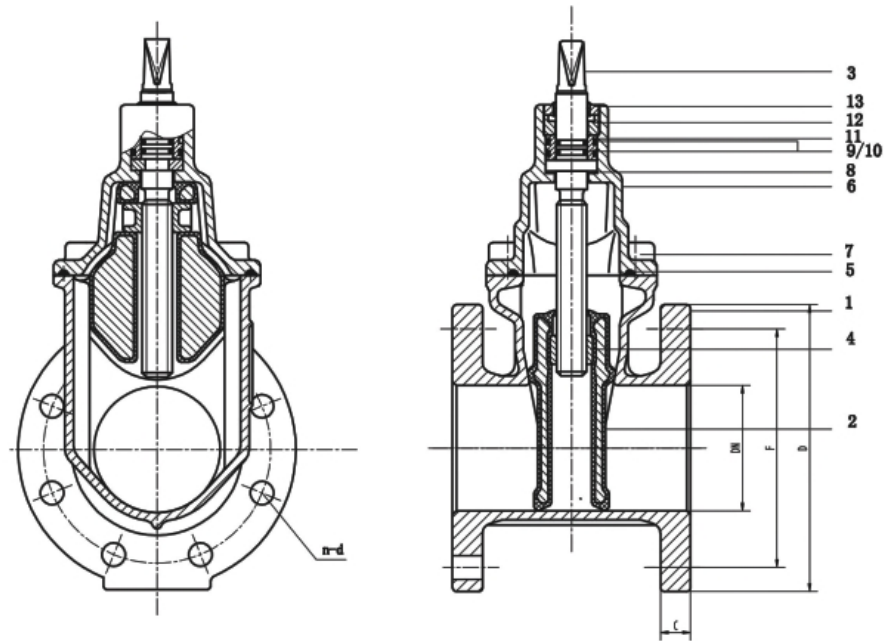
ITEM	PART NAME	DESCRIPTION
1	Body	DIEN1563 GJS500-7
2	Wedge	DIEN1563 GJS500-7+EPDM/NBR
3	Stem	Stainless Steel 420
4	Stem nut	Brass
5	Middle gasket	NBR or EPDM
6	Bonnet	DIEN1563 GJS500-7
7	Bolt	Stainless Steel 304
8	Lubricant gasket	POM
9	O-ring	NBR or EPDM
10	O-ring	NBR or EPDM
11	Seal bush	POM
12	Screw cover	Cr13
13	Dust cover	NBR or EPDM
14	Top cover	PA-66
15	Hand wheel	DIEN1563 GJS500-7
16	Screw	Stainless Steel 304

Size	DN80-200
Class	PN10-PN16
Design	DIN3352
Face to Face	
End Flange	EN1092-2
Test	EN2266-1

DIMENSIONS AND WEIGHTS

DN	A	B	C	D	L	S
80	130	110	98	84	280	17
100	161	144	120	84	300	17
150	220	200	172	84	350	19
200	281	257.5	225	100	400	22

RESILIENT SEATED GATE VALVE-AWWA C509

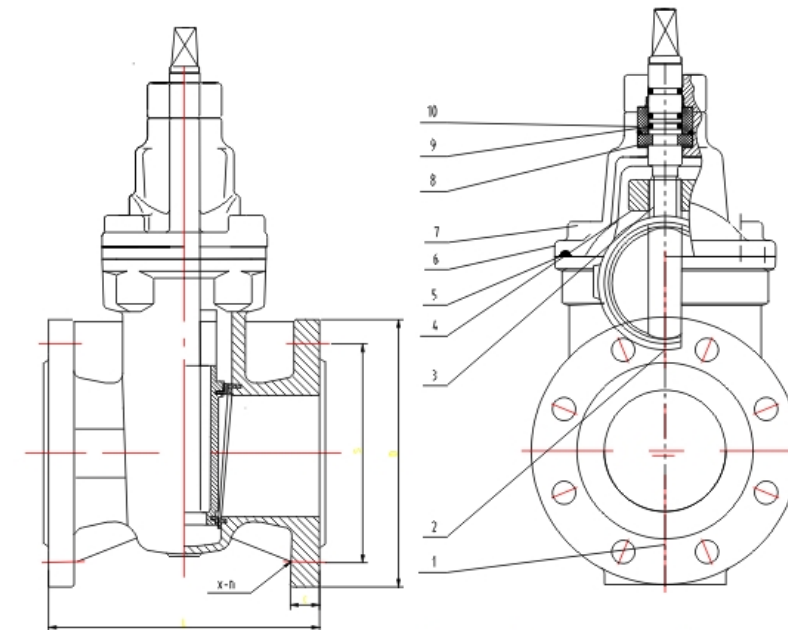


Sr No.	Parts	Material
1	Body	GGG50
2	Disc	GGG50+CR
3	Stem	2Cr13
4	Stem Nut	Brass
5	Gasket	EPDM
6	Bonnet	GGG50
7	Bolts	CS or SS
8	Washer	POM
9	O ring	NBR/EPDM
10	O ring	NBR/EPDM
11	Seal Cover	POM
12	G1 and	2Cr13
13	Weather Cover Seal	PA

Design: ANSI/AWWA C509
Face to Face Dimension: ISO 5723 3 Series/ASTM B16.10
Inspection & Test: C509 End Flanges
Dimension: B16.1/B16.42

AWWA C509 RESILIENT GATE VALVE					
DN	L	D	F	C	n-d
DN50	178	150	120.5	15.9	4-19
DN65	190	180	139.5	17.5	4-19
DN80	203	190	152.5	19.1	4-19
DN100	229	229	190.5	23.9	8-19
DN125	254	254	216.5	23.9	8-22
DN150	267	279	241.5	25.4	8-22
DN200	292	343	298.5	28.6	8-22
DN250	330	406	362.5	30.2	12-55
DN300	356	483	432	31.8	12-55

METAL SEAT GATE VALVE

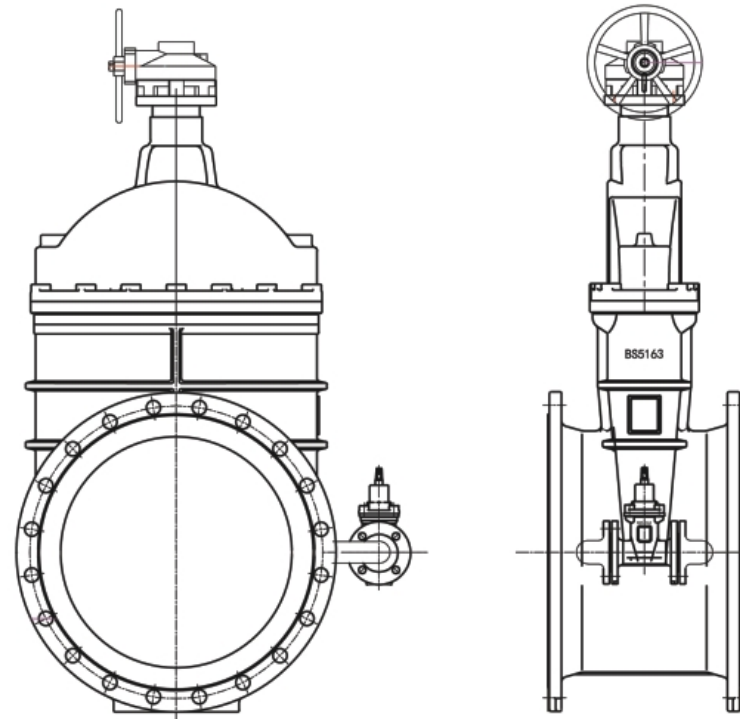


Sr No.	Parts	Material
1	Body	GGG50
2	Disc	GGG50+Brass
3	Stem	SS420
4	Stem Nut	Brass
5	Gasket	EPDM
6	Bonnet	GGG50
7	Bolts	A2-70
8	Stem Collar	Brass
9	O ring	EPDM
10	Bearing	POM

Shell Test	2.4 MPa	Suitable Temp°C	-10°C~80°C
Seat Test(Hyd.)	1.6 MPa	CLASS	PN16
		SIZE	DN50~DN300
Design: DIN3352	Face to Face Dimension: BS5163		
Inspection & Test: EN12266	End Flanges Dimension: EN1092-2		

DN	L	EN1192-2			
		D	S	x-n	C
50	178	150	125	4-Φ19	19
65	190	185	145	4-Φ19	19
80	203	200	160	8-Φ19	19
100	220	220	180	8-Φ19	19
150	267	285	240	8-Φ22	19
200	292	340	295	12-Φ22	20
250	330	400	355	12-Φ28	22
300	356	455	410	12-Φ28	24.5

RESILIENT SEATED GATE VALVE WITH BYPASS



SPECIFICATIONS

Size: DN350-DN600

Class: PN10-PN16

Design: BS5163

End Flange: BS EN1092-2

Face to face dimension: BS5163

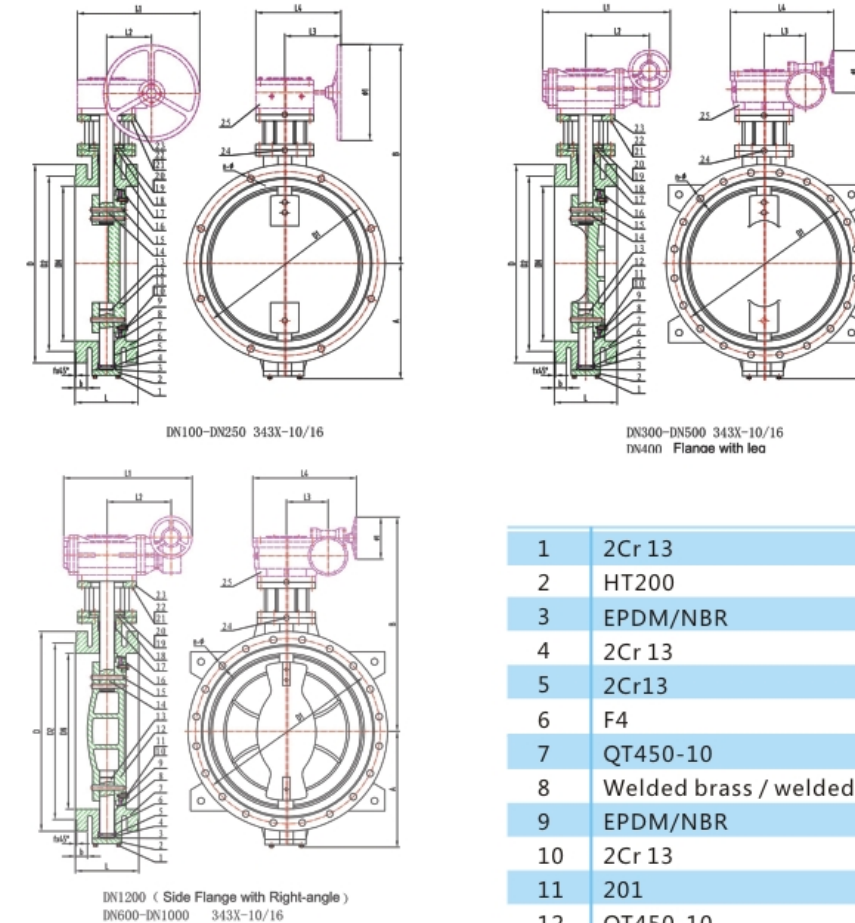
STANDARD MATERIALS OF MAIN PARTS

Sr No.	Parts	Material
1	Body	GGG50
2	Disc	GGG50+EPDM
3	Stem Nut	Brass
4	Stem	2Cr13
5	Gasket	NBR/EPDM
6	Bolts	CS or SS
7	Bonnet	GGG50
8	Washer	POM
9	Seal Cover	POM
10	O ring	NBR
11	O ring	NBR
12	G1 and	2Cr13
13	Weather Cover Seal	POM
14	G-Box	WCB

DIMENSIONS

DN	OUTLINE mm				END FLANGE BS PN10/16mm										By pass
	L	h	D	h1	a	d	C		X-n		T	G		F	
350	381	950	500	1030	350	520	460	470	14-Φ23/2-M20	14-Φ23/2-M20	26.5	429		4	DN50
400	406	1035	560	1115	400	580	515	525	14-Φ28/2-M24	14-Φ28/2-M24	28	480		4	DN50
450	432	1165	560	1245	450	640	565	585	18-Φ28/2-M24	18-Φ28/2-M24	30	530	548	4	DN80
500	457	1230	650	1310	500	715	620	650	18-Φ28/2-M24	18-Φ28/2-M24	31.5	582	609	4	DN80
600	508	1390	650	1470	600	840	725	770	18-Φ31/2-M27	18-Φ31/2-M27	36	682	720	5	DN80

DOUBLE ECCENTRIC BUTTERFLY VALVE



Technical Data

Design STD: BS5155

Face to face: BS EN 558-1/ISO5772

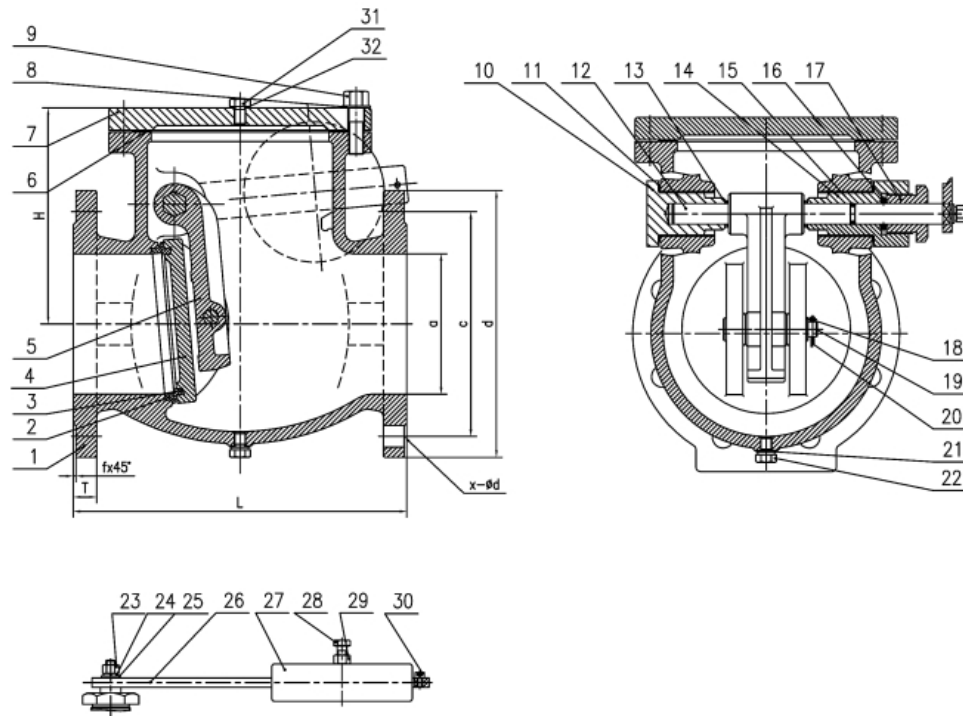
Flange end: BS EN 1092-2/ISO7005-2

Pressure test: BS5155

1	2Cr13	14	SS416
2	HT200	15	2Cr13
3	EPDM/NBR	16	Q235
4	2Cr13	17	EPDM/NBR
5	2Cr13	18	HT200
6	F4	19	2Cr13
7	QT450-10	20	2Cr13
8	Welded brass / welded SS	21	2Cr13
9	EPDM/NBR	22	2Cr13
10	2Cr13	23	HT200
11	201	24	416
12	QT450-10	25	QT450-10
13	SS416		

DN	L Long	A	B	fx45°	PN10					PN16					L1	L2	L3	L4	Φ1
					D	D1	D2	n-Φ	b	D	D1	D2	n-Φ	b					
100	190	138	347	3	220	180	158	8-19	19	220	180	158	8-19	19	216	60	155	221	180
125	200	155	427	3	250	210	184	8-19	19	250	210	184	8-19	19	216	60	155	221	180
150	210	173	444	3	285	240	212	8-23	19	285	240	212	8-23	19	270	72	175	253	240
200	230	225	477	3	340	295	268	8-23	20	340	295	268	12-23	20	270	72	175	253	240
250	250	248	565	3	395	350	320	12-23	22	405	355	320	12-28	22	346	96	183	283	300
300	270	283	695	3	445	400	370	12-23	24.5	460	410	370	12-28	24.5	434	181	94	357	300
350	290	313	715	3	505	460	430	16-23	24.5	520	470	430	16-28	26.5	434	181	94	357	300
400	310	343	775	3	565	515	482	16-23	25	580	525	482	16-31	28	434	181	94	357	300
450	330	368	786	3	615	565	532	16-28	26	640	585	548	20-31	30	434	181	94	357	300
500	350	395	918	3	670	620	585	20-28	28	715	650	609	2--34	32	531	200	125	432	400
600	390	460	1007	5	780	725	685	20-31	30	840	770	720	20-37	36	574	228	140	501	400
700	430	518	1060	5	895	840	800	20-31	33	910	840	794	24-37	41	574	228	140	501	400
800	470	588	1102	5	1015	950	905	24-24	36	1025	950	901	24-40	45	574	228	140	501	400
900	510	653	1180	5	1115	1050	1005	28-34	38	1125	1050	1001	28-40	47	638	243	162	547	450
1000	550	727	1339	5	1230	1160	1110	28-37	41	1255	1170	1112	28-43	50	777	302	236	656	450
1200	630	808	1444	5	1455	1380	1330	32-40	45	1485	1390	1328	32-49	55	777	302	236	656	450

BS5153 METALLIC SWING CHECK VALVE



STANDARD MATERIALS OF MAIN PARTS

ITEM	PART NAME	MATERIAL
1	Body	Ductile Iron/ Cast Iron
2	Disc	Ductile Iron/ Cast Iron
3	Cover	Ductile Iron/ Cast Iron
4	Shaft/Pin	Stainless Steel 420/431/316
5	Shaft Nut	Ductile Iron/ Cast Iron
6	Hinge	Ductile Iron
7	Body Ring	Brass/ Bronze
8	Disc Ring	Brass/ Bronze

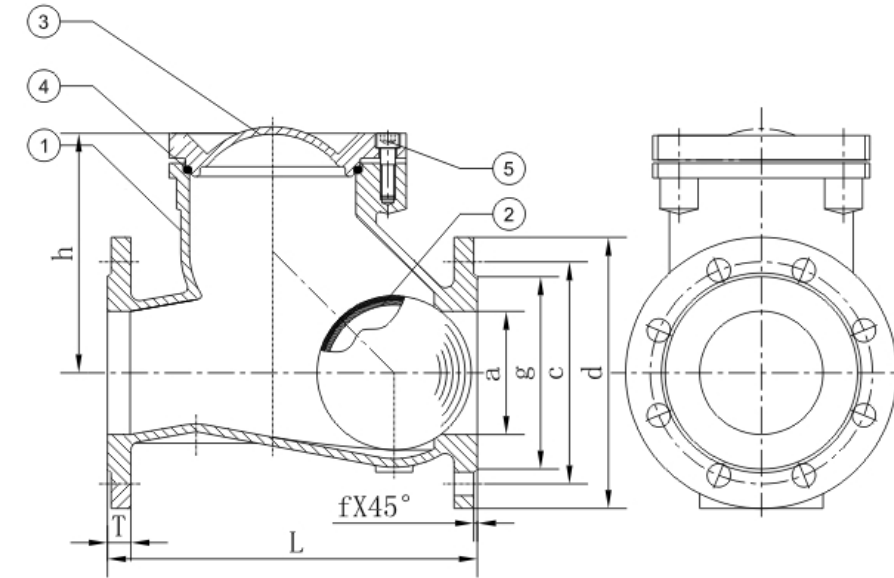
SPECIFICATIONS

Size	DN50-400
Class	PN 10-PN 16
Design	BS 5153
Face to Face	BS 5153
End Flange	BS 4504/ BS EN 1092
Test	BS 5153

DIMENSIONS

SIZE	a	c	d	T(DI / CI)	f	L	X-N(PN10/PN16)	≈H	D
50	50	125	165	19 20	3	203	4-Φ19	135	170
65	65	145	185	19 20	3	216	4-Φ19	148	176
80	80	160	200	19 22	3	241	8-Φ19	178	205
100	100	180	220	19 24	3	292	8-Φ19	195	220
125	125	210	250	19 26	3	330	8-Φ19	210	265
150	150	240	285	19 26	3	356	8-Φ23	250	295
200	200	295	340	20 30	3	495	8-Φ23 12-Φ23	300	370
250	250	355	405	22 32	3	622	12-Φ23 12-Φ28	335	430
300	300	410	460	24.5 32	4	698	12-Φ23 12-Φ28	365	505
350	350	470	520	26.5 36	4	787	16-Φ23 16-Φ28	415	610
400	400	525	580	28 38	4	914	16-Φ28 16-Φ31	455	685

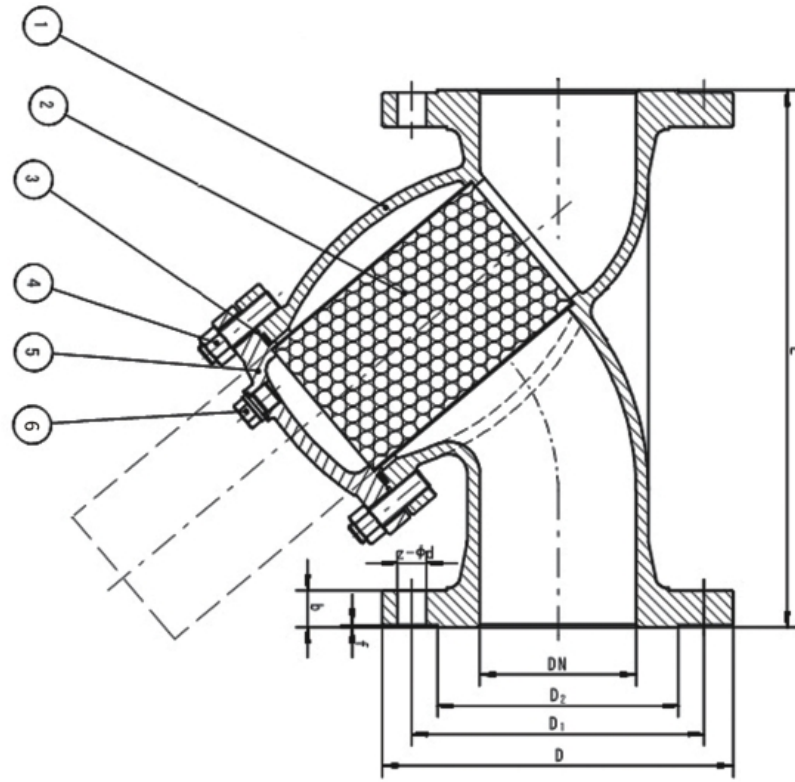
RESILIENT NON RETURN BALL CHECK VALVE



5	BOLTS		A2-70
4	O-RING	1	NBR
3	Cover	1	GGG50
2	BALL	1	AL/EPDM(DN50-DN100) GGG50/NBR(DN125DN300)
1	BODY	1	GGG50
No.	PART NAME	QTY	MATERIAL
Shell Test			Suitable Temp°C -10°C~80°C
Seat Test(Hyd.)			CLASS PN10/PN16
Seat Test(Air)			SIZE DN50~DN300
Design:DIN3352			Face to Face Dimension:DIN3202 F6
Inspection & Test:EN12266			End Flanges Dimension:EN1092-2

SIZE	a	c	d	T	f	L	X-N(PN10/PN16)	≈h	g
50	50	125	165	19	3	200	4-Φ19	110	99
65	65	145	185	19	3	240	4-Φ19	125	118
80	80	160	200	19	3	260	8-Φ19	155	132
100	100	180	220	19	3	300	8-Φ19	200	156
125	125	210	250	19	3	350	8-Φ19	220	184
150	150	240	285	19	3	400	8-Φ23	260	211
200	200	295	340	20	3	500	8-Φ23 12-Φ23	320	266
250	250	350	405	22	3	600	12-Φ23 12-Φ27	360	319
300	300	400	410	24.5	4	700	12-Φ23 12-Φ27	430	370

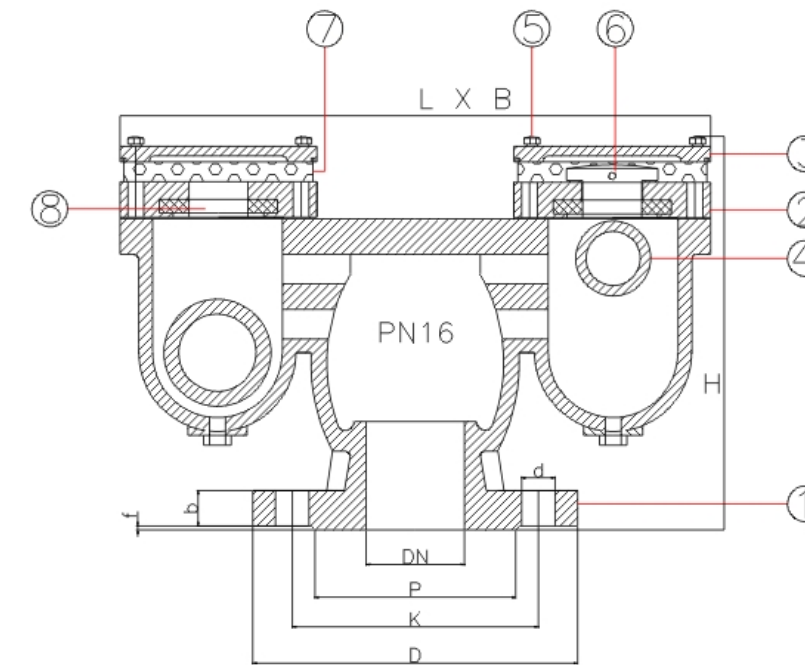
DIN 3202 F1 CAST IRON Y STRAINER



- 1.Design:DIN3352
- 2.Flange:DIN2501
- 3.Face to face:DIN3202 F1
- 4.Standard screen:3/64" pref.
- 5.Screen thickness:0.5mm

Sr No.	Parts	Material
1	Body	GGG50
2	Screen	SS304
3	Gasket	NBR
4	Bolts	SS304
5	Bonnet	GGG50
6	Plug bolts	SS304

AIR RELEASE VALVE



- STANDARDS APLIED**
- 1.Design standard to AWWA C512
 - 2.End Flanges Dimension to EN1092-2
 - 3.Testing standard to EN12266

No.	Part Nome	Material
1	BODY	GGG50
2	BONNET	GGG50
3	COVER PLATE	SS304
4	SEALING BALL	SS304
5	BOLT	A2-70
6	AIR VENT	BRASS
7	EXHAUST GAS NETWORK	SS304
8	GASKET	EPDM

DN	D	K	P	b	f	d	H	L×B
DN50	165	125	99	19	3	4-19	200	300×100
DN80	200	160	132	19	3	8-19	280	370×120
DN100	220	180	156	19	3	8-19	300	370×120
DN150	285	240	211	19	3	8-23	360	460×150