

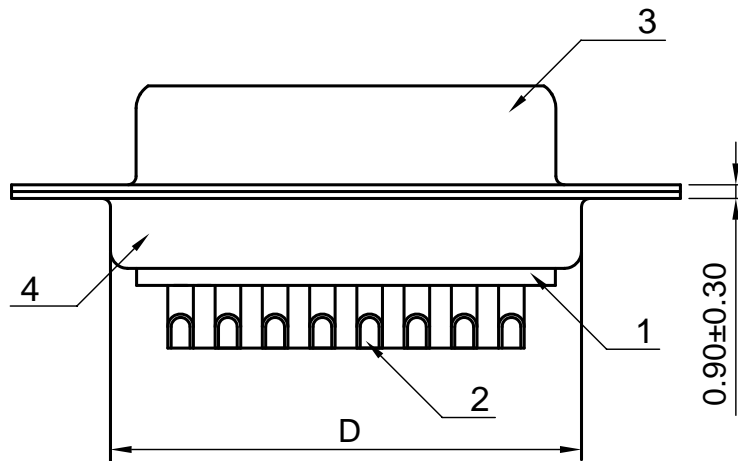
#### Material:

1. Insulator: P.B.T UL 94V-0
2. Contact: Brass or Copper Alloy
3. Shell: Cold Rolled Steel

#### Specifications:

1. Current Rating: 5 A
2. Withstanding Voltage: 500V AC/Minute.
3. Contact Resistance: 15 mOhm max.
4. Insulation Resistance: 1000 mOhm min.
5. Operating Temperature: -55°C to 105°C  
(upto +125°C for high temp)

4	Back-Shell	1	Cold Rolled Steel	T=0.40mm	Tin Plated
3	Front-Shell	1	Cold Rolled Steel	T=0.40mm	Nickel Plated
2	Contact	9-50	Brass or Copper Alloy	T=0.20mm	Gold Plated
1	Housing	2	P.B.T	UL 94V-0	Black/Blue/White
No.	Part Name	Qty	Material	Remarks/ Thickness	Finish



POS.	A	B	C	D	E	F
9	30.80	24.99	16.30	19.20	7.90	12.60
15	39.15	33.32	24.65	27.70	7.90	12.60
25	53.00	47.04	38.40	41.10	7.90	12.60
37	69.30	63.50	54.80	57.30	7.90	12.60
50	67.00	61.00	52.20	55.10	10.90	15.30

**AAA**CONN

AAA (HK) Electronics Co., Ltd.

www.aaaconnectors.com

**RoHS Compliant**

TOLERANCES ARE

DRAWING BY

X. ±

CHECKED BY

.X ±

UNIT / mm

SCALE 1 : 1

.XX ±

DATE

.XXX ±

SIZE A4

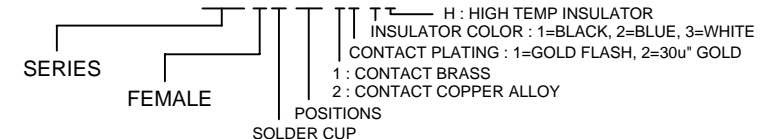
PPOJECTION

ANG ±



#### ORDER INFORMATION

171-FS-xx-xx-xx



Description: D-Sub Connector Receptacle Female Sockets Solder Cup