



GRANDIND

HAIYAN JIAMEI HARDWARE MFG. AND TECH. CO., LTD

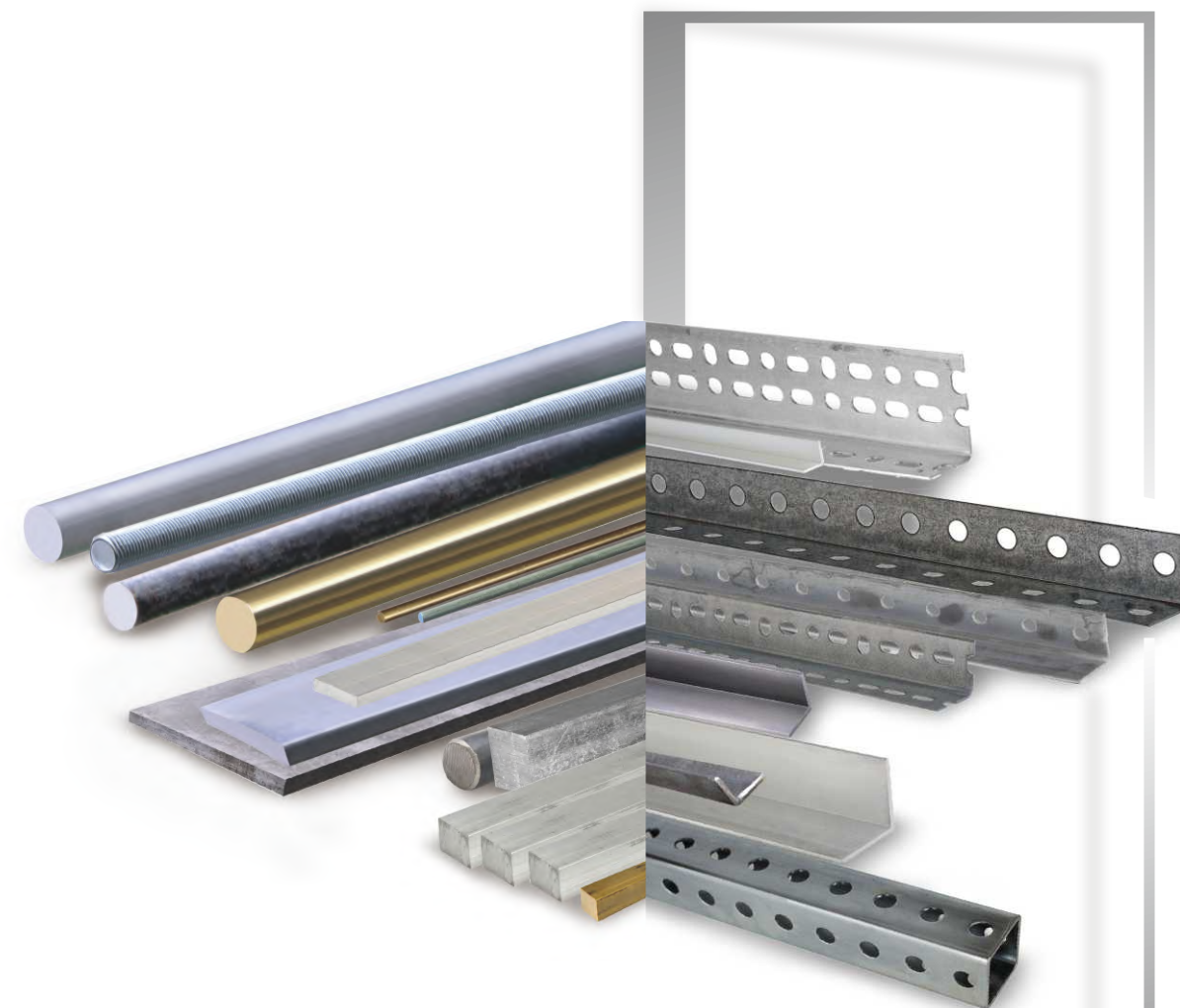
99Xufeng Road, Qinshan, Haiyan

Tel: 0086-573-86515981

FAX: 0086-573-86515982

Email: willwang@jiameihardware.com; info@jiameihardware.com

Website: www.jiameihardware.com



GRANDIND

***HAIYAN JIAMEI HARDWARE MFG.
AND TECH. CO., LTD***

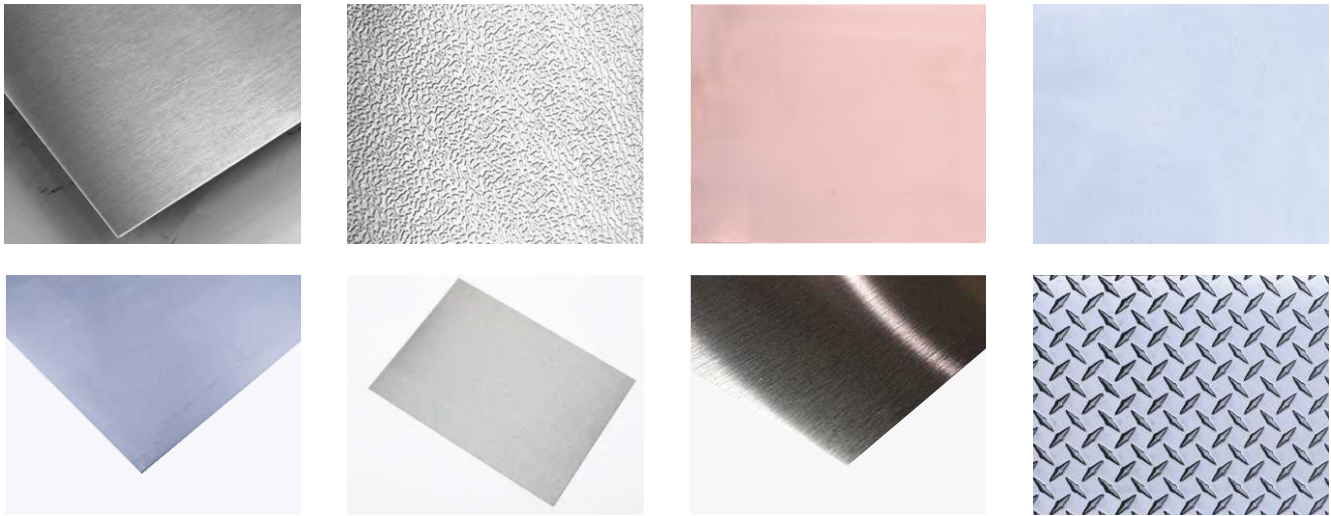


Company Profile

Haiyan Jiamei Hardwar Mfg. and Tech. Co., Ltd (established in 2014) is a subsidiary of Grand Industries group.

In 2018, the whole sales of Grand Industries Group was more than 33 million US Dollars, main products are fasteners, hardware, sheets and tubes. We are determined to provide a package service to our customers, including design, manufacture, packing and install. We expect our experience on fastener and hardware may help our customers work easily.

Haiyan Jiamei is still a young company in the market, but depending on the experienced team and advanced machinery equipment, it keeps a rapid growth. Welcome new and old customers come to visit our new workshop.

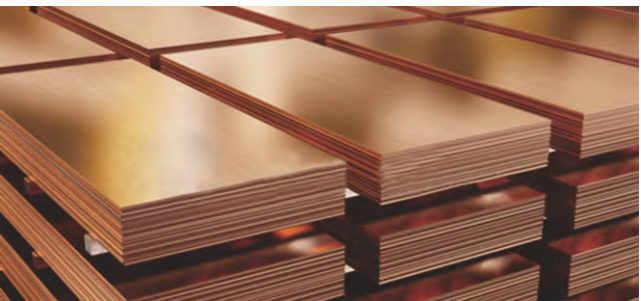


Sheet

Sheet metal is metal formed by an industrial process into thin, flat pieces. Sheet metal is one of the fundamental forms used in metalworking and it can be cut and bent into a variety of shapes. Countless everyday objects are fabricated from sheet metal. Thicknesses can vary significantly; extremely thin sheets are considered foil or leaf, and pieces thicker than 6 mm (0.25 in) are considered plate steel or "structural steel."

Material: Carbon steel, Galvanized, Aluminum, Copper, stainless

Finish: Zinc, Galvanized, Spray, Anodizing, Polishing, Sand Blasting, Superficial wiredrawing, Embossing....



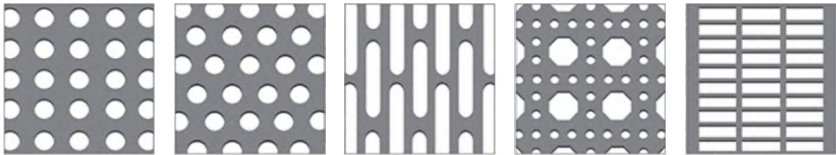
Decorate Metal

The decorative sheet on the exterior of the building, it does not bear the weight, but it improves the decorative and artistic of the building. Designers can customize a variety of shapes and colors according to user requirements. It coordinates with the environment, works with light, integrates buildings and nature, and relieves the pressure on tall buildings.

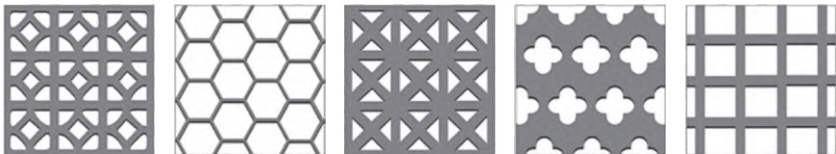
As a high-speed development of the curtain wall, the metal curtain wall is favored by the architects, with strong technical force, breathable and transparent, and diverse colors. It is also widely used in interior decoration, ceilings, etc.

There are various types of holes,round,square,triangular shape,fish scales shape,concave or convex shape and various combination of shapes,which can be customized according to customer needs.

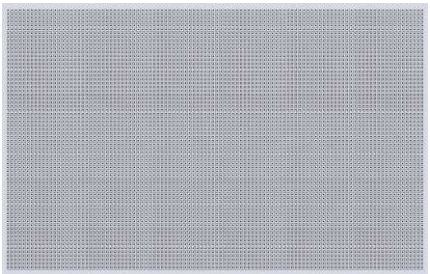
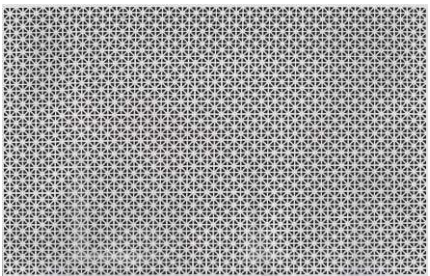
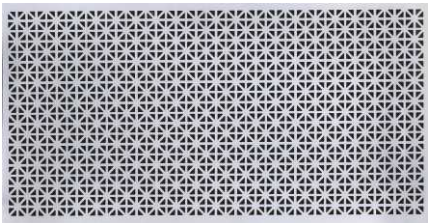
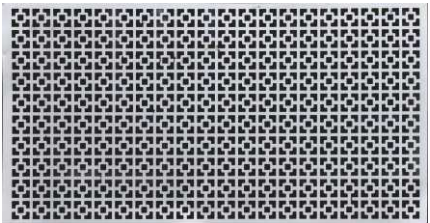
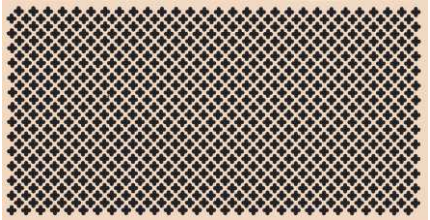
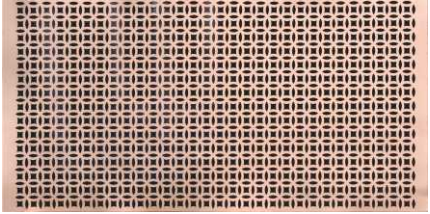
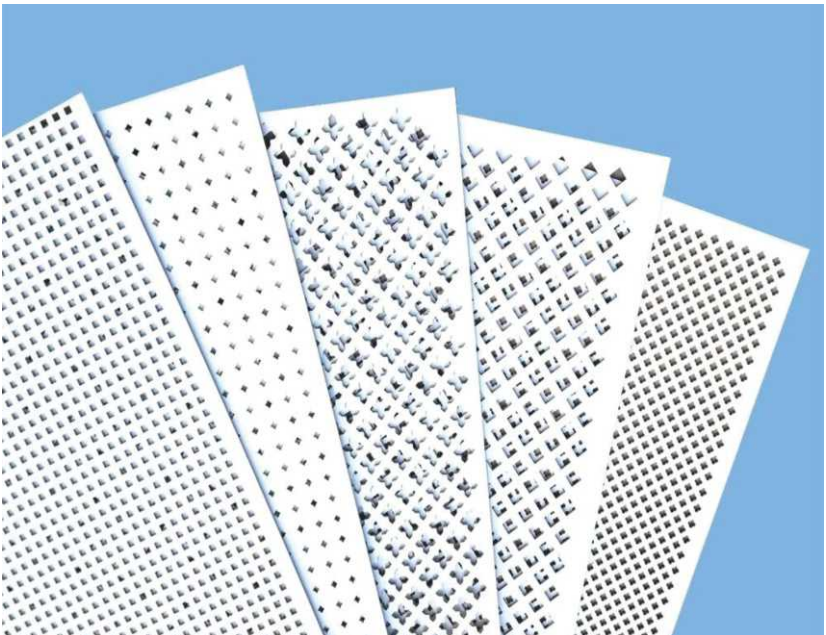
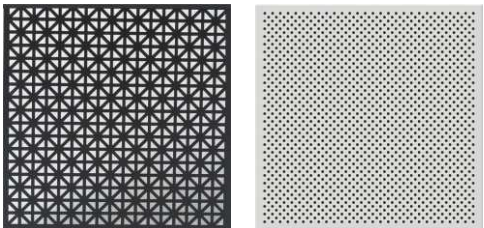
Material: Carbon steel, Galvanized, Aluminum, Copper, stainless,PVC
Finish: Zinc,Galvanized, Spray, Anodizing, Polishing, Sand Blasting, Superficial wiredrawing, Embossing....



Round Hole Straight Round Hole Staggered Round Hole Slotted Octagon Cane Airline



Marietta Hexagon Grecian Full Leaf Clover Square

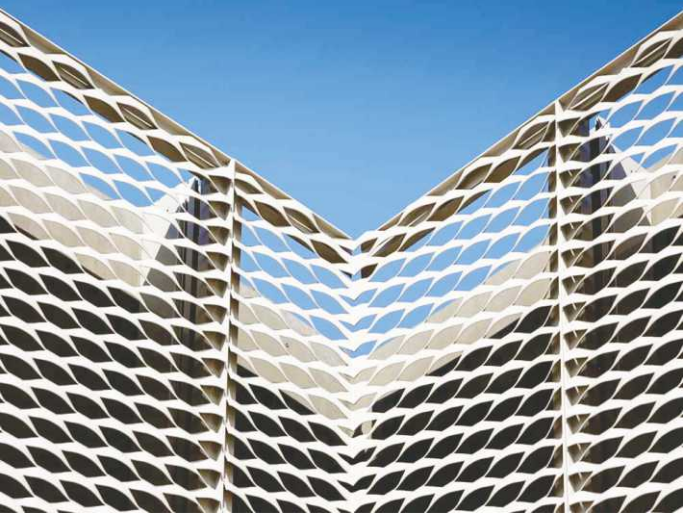
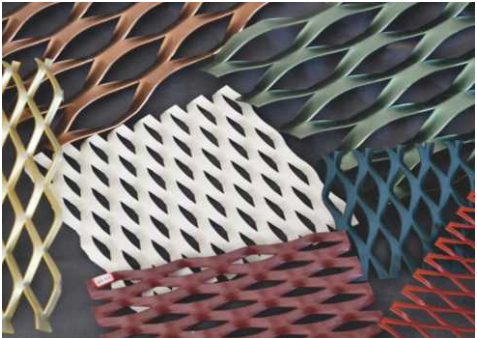
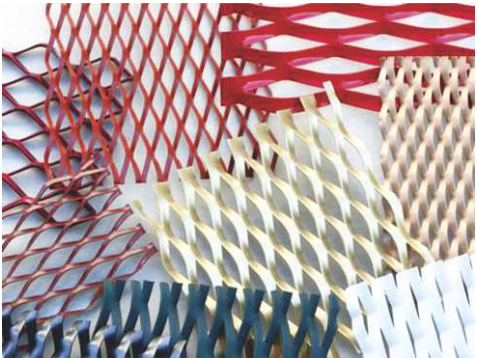
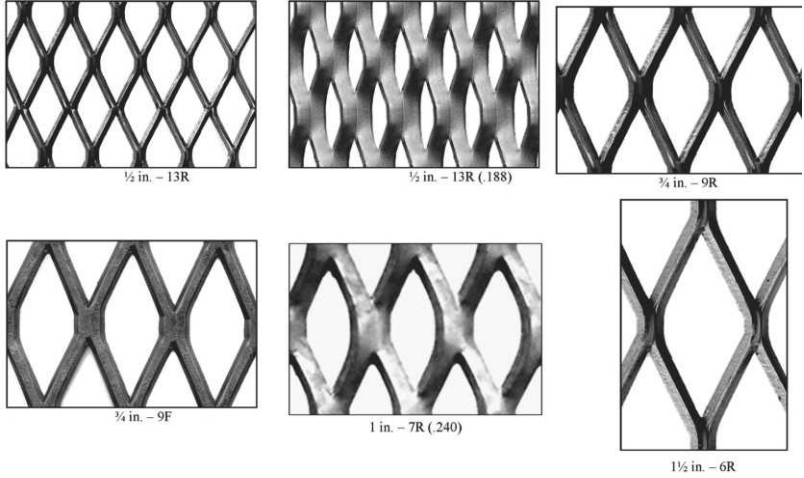
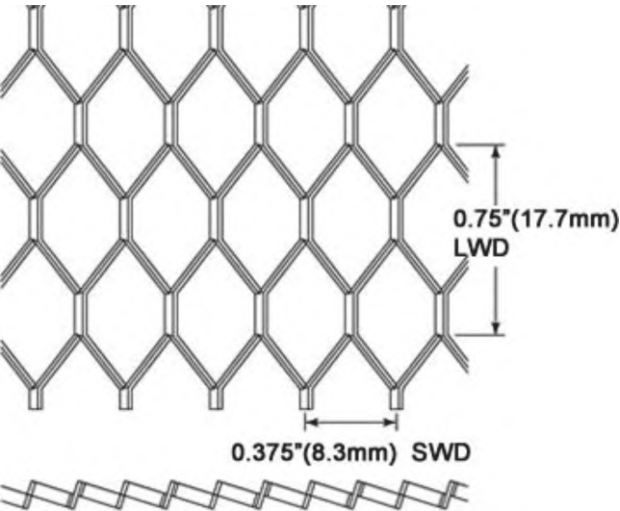
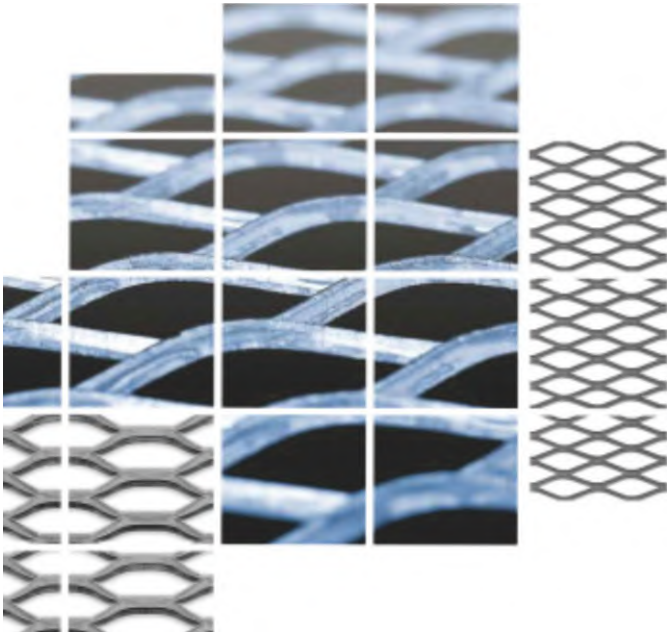
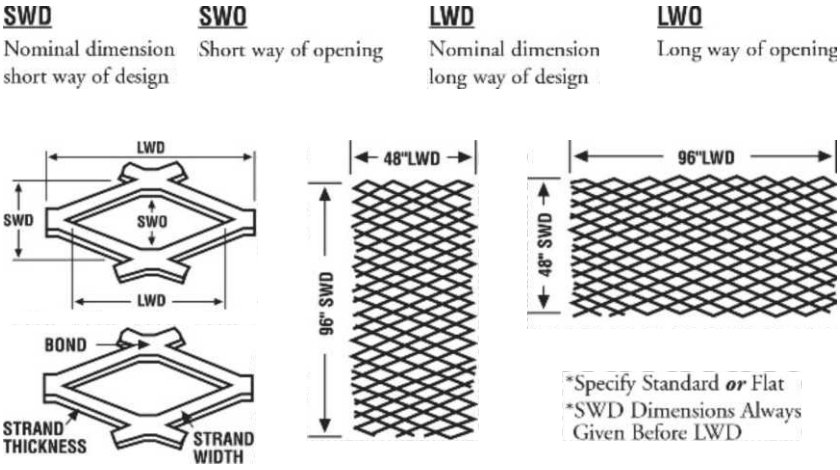
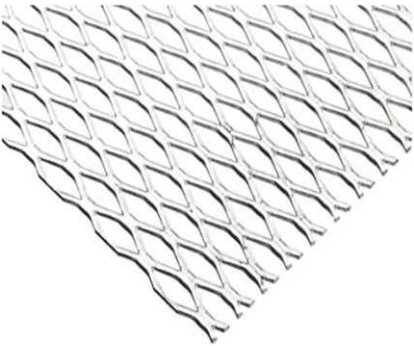


Expanded Metal

Expanded Metal material usually is carbon steel,aluminum,stainless steel,also can custmize the material.according to the special application.Expanded metal is expanded by the metal sheet,with the features of durable,keeping long time.

After flatten process,the bond will become more smooth, the surface will be like the plate without raised.Mainly used for Ceiling decoration,Outdoor furniture,Beach tables and chairs,Shelf platform etc.

Finish: usually is Zinc, Galvanized,sand blasting....

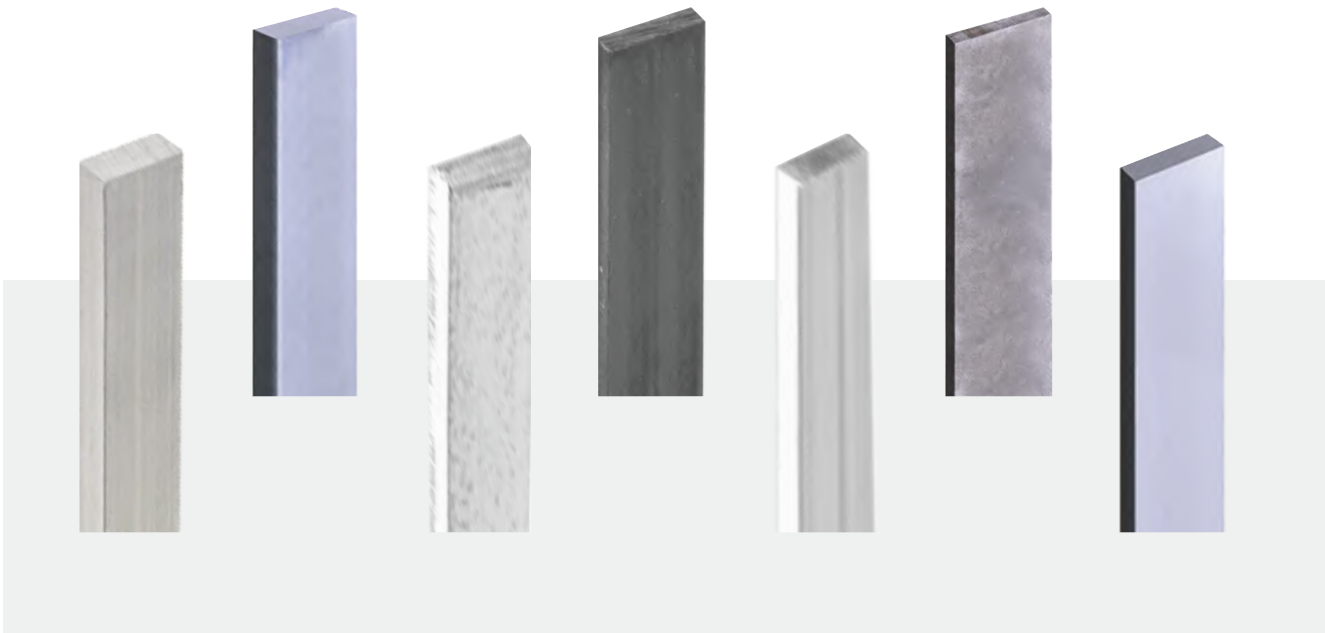


Flat bar

Flat bar are perfect for a number of uses, including ladder hangers, braces, and are easy to weld to fit any need. Made of corrosion-resistant metals, they remain sturdy and look good longer. Flats can be formed into any shape.

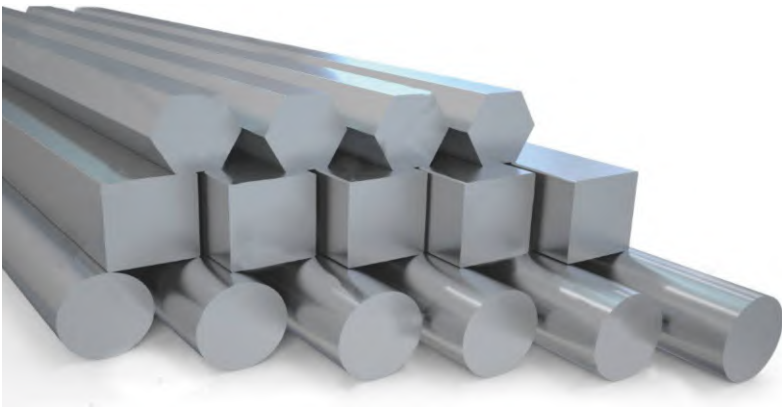
Material: Carbon steel, Galvanized, Aluminum, Copper, stainless

Finish: Zinc,Galvanized, Spray, Anodizing



Round&Square Rods

All-metal floor stand are widely used in industrial maintenance, agricultural implements, transportation equipment, ornamental iron work, fencing, artwork, etc. This shape is easy to weld, cut, form and machine with the proper equipment and knowledge. Choose the right shape as

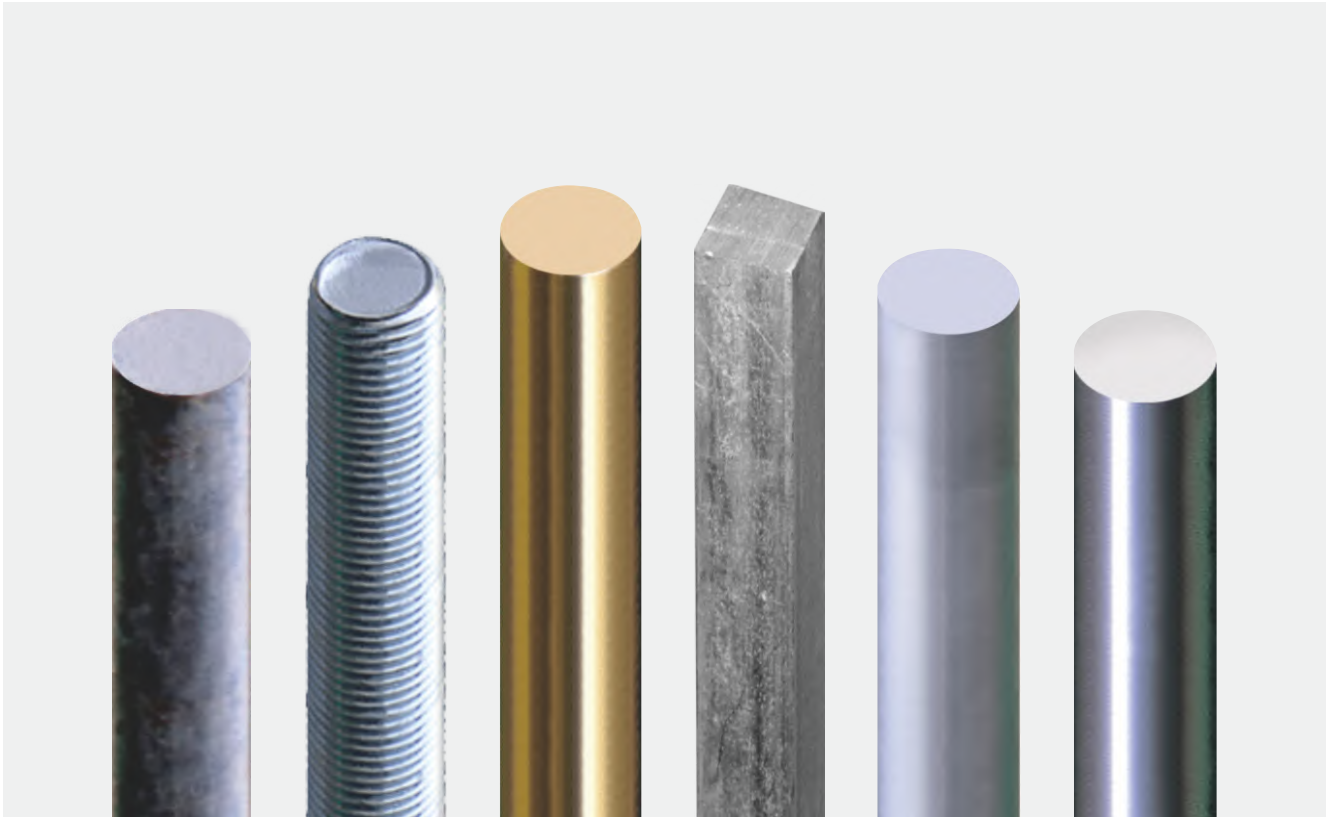


Finish : Bare, ZINC, aluminum anodizing

Materials: Steel, brass, stainless, aluminum

Diameter: 1/2. 1/4. 3/4. 3/8. 5/16. 1....

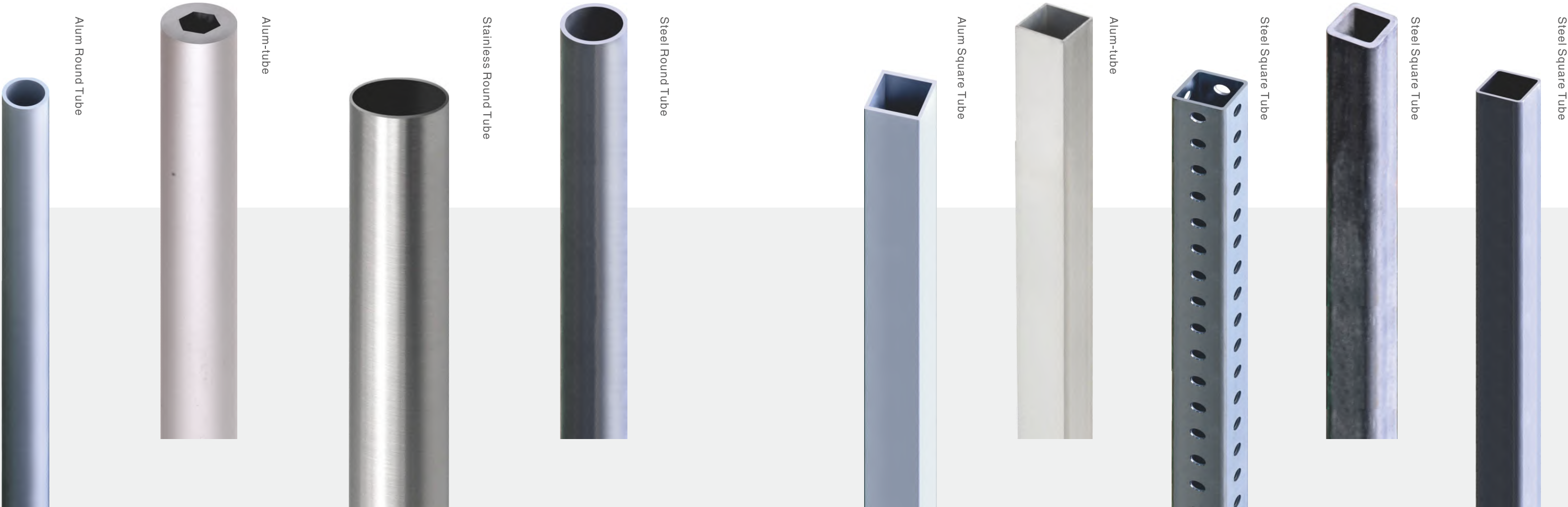
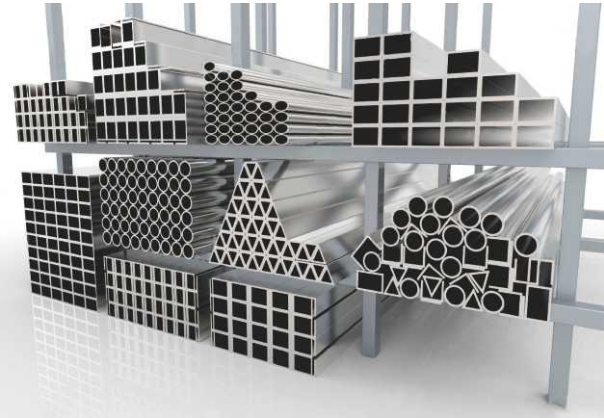
Length: can be cut to any length



Round&Square tube

Tubes are great for fence repairs, key stock, handles and safety grids. Steel round tubes have a finish that is recommended for welding, repairs, and fabrication. Manufactured with low carbon steel. Plain steel, not plated to simplyfy welding. Available in different widths.

- Finish:** Bare, ZINC, GALVANIZED, aluminum anodizing
- Materials:** Steel, brass, stainless, aluminum
- Diameter:** 1/2. 1/4. 3/4. 3/8. 5/16. 1....
- Thickness:** 16GA, 18GA, 14GA, 13GA...
- Length:** Factory 6m, can be cut to any length



ANGLES

Angle is one of the most popular hot rolled, low carbon steel shapes used in manufacturing. It's 90 degree angle shape adds strength and rigidity to any project for a lower price compared to other shapes and types of metal. It is easy to weld, cut, form and machine.

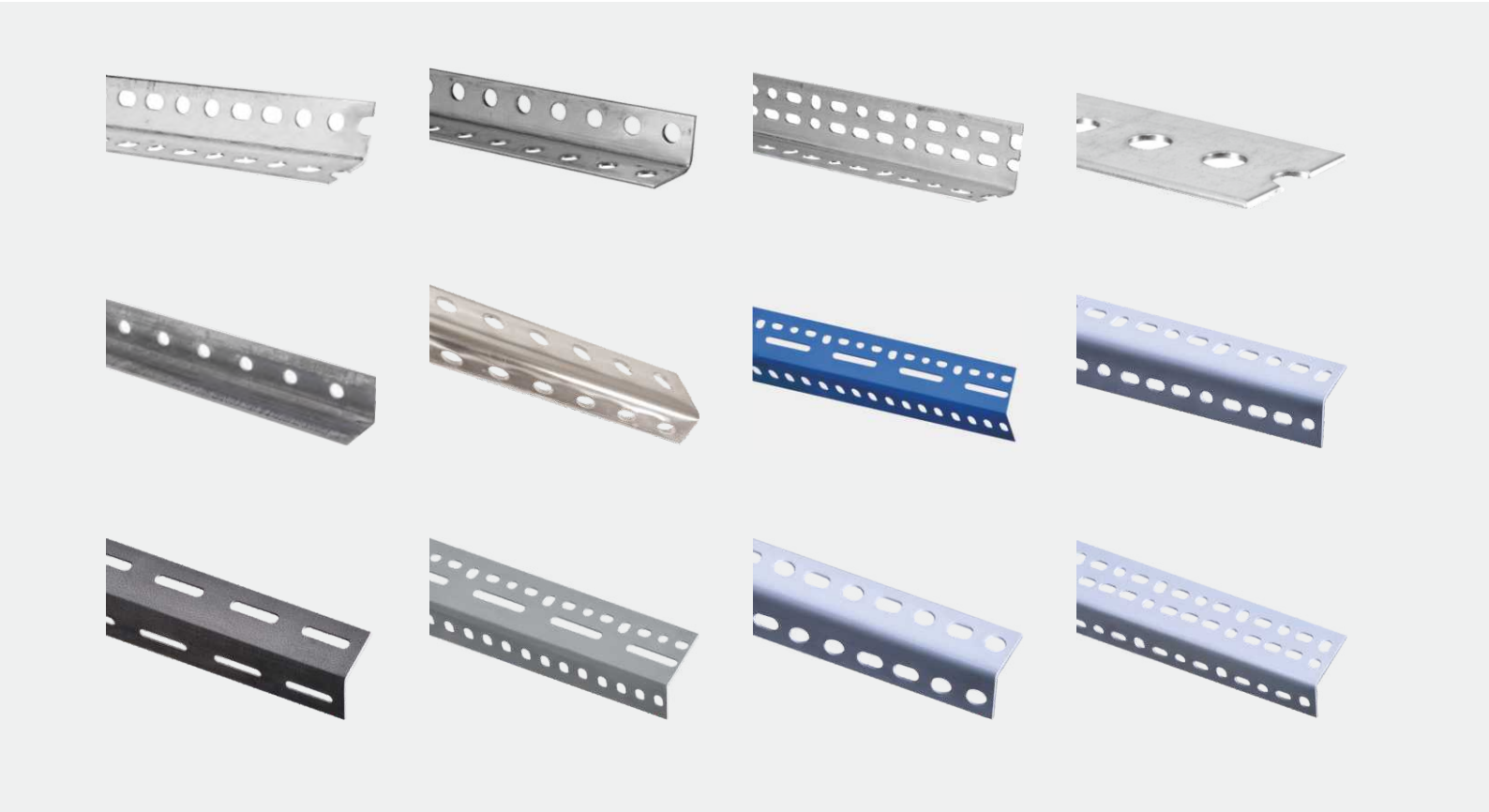
Finish: BARE, ZINC, GALV, Gray, black,white...

Thickness: 1/8,1/16...

Length: can be cut to any length

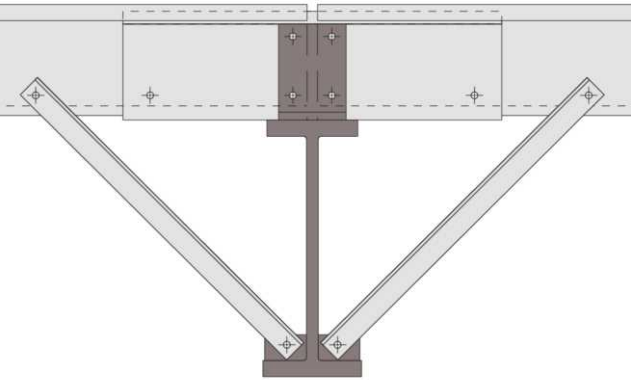
Materials: Steel,aluminum

| Size | Thickness | Length | Materials |
|---------|-----------|--------|-----------|
| 1/2x1/2 | 1/16 | 36in. | Steel |
| 1/4x1/4 | 1/16 | 36in. | Steel |
| 3/4x3/4 | 1/8 | 36in. | Steel |
| 3/8x3/8 | 1/8 | 48in. | Alumunum |
| 5/8x5/8 | 1/8 | 48in. | Alumunum |
| 7/8x7/8 | 1/8 | 72in. | Alumunum |
| 1x1 | 1/8 | 72in. | Alumunum |



Slotted angle helps you build an efficient framing system for a variety of uses from machine guards to hand rails.

Slotted Angle is the most versatile, time and cost effective construction material available for building carts, ladders, benches, shelving, cases, racks or any other type of structure.



Finish: Gray, White, Black, ZINC, GALV



Other

Aluminum channel Plywood Trim is lightweight and maintains high corrosion resistance. Aluminum channel plywood trim is available in 4ft, 6ft, and 8ft. Use with appropriate sized plywood.

