

国家级高新技术企业

浙江省级液压马达技术研发中心

ISO9001质量体系认证

ISO14001环境体系认证

OHSAS18001职业健康安全体系认证

宁波中意液压马达有限公司

NINGBO ZHONGYI HYDRAULIC MOTOR CO., LTD.

THOTH 萨奥思

宁波中意液压马达有限公司

Ningbo Zhongyi Hydraulic Motor Co., Ltd.

中国·宁波市镇海经济开发区中意路88号

Add: 88 Zhongyi RD Zhenhai Ningbo China

市场营销部

Marketing Department

Tel: +86-574-86261172 86378300 86378301

86264399 86252670 86252105

Fax: +86-574-86288064

国际贸易部

International Trade Department

Tel: +86-574-86378895

Fax: +86-574-86378310

PC: 315200

http: //www.zihyd.com

E-mail: sales@zihyd.com

全国免费服务热线 : 400 112 1102

本产品资料如有修改, 恕不另行通知 2018 年 5 月版



微信二维码

HYDRAULIC TRANSMISSION

PRODUCT
MANUALS

液压传动装置产品手册



CE



宁波中意液压马达有限公司

NINGBO ZHONGYI HYDRAULIC MOTOR CO.,LTD.

THOTH

萨奥思



我们愿以 “诚信、合作、互利、共赢” 的原则，与国内外各界朋友真诚合作，共同创造；以先进的技术、卓越的品质、优良的服务竭尽全力成为广大用户值得信赖的合作伙伴。

We would like to sincerely cooperate with all the friends, domestic and overseas, on the principle of "good faith, cooperation, mutual benefits and co-winning", and jointly create the future. We will try our best to become your reliable partner with our leading technology, outstanding quality and best services.

蔡国定
Cai Guoding

COMPANY INTRODUCTION

企业简介

宁波中意液压马达有限公司成立于1971年，是中国目前规模最大的专业生产液压马达的高新技术企业之一，公司目前在国内设有两大生产基地，其中宁波厂区占地面积44000多平方米，企业总资产达到3亿元；安徽芜湖厂区占地面积80000多平方米，一期投资1.5亿元。公司不仅具有国际标准化的加工车间，更拥有国际、国内领先技术的制造、检测设备。中意人将与您携手打造一流产品、一流服务、一流品牌。

公司位于中国经济最发达和最具有潜力的长江三角洲，浙江省的东部—宁波镇海经济开发区，海陆空交通发达。公司距宁波栎社国际机场20公里，距国际四大深水良港之一的北仑港10公里。宁波杭州湾跨海大桥的贯通，使宁波融入上海2小时交通圈。

Ningbo Zhongyi Hydraulic Motor Co., Ltd. was founded in 1971, and is one of the largest hi-tech enterprises in China that specialize in production of hydraulic motors. At present the company owns two manufacturing bases, one is in Ningbo covering an area of 44,000m², with total asset of RMB300 million. The other is in Wuhu Anhui with an area of 80,000m². First phase investment will be RMB150 million. The Company has manufacturing workshop meeting the international standards and the manufacture and test equipments that are leading technologically home and abroad. The staff of Zhongyi will create first-class products, services and brand hands in hands with you.

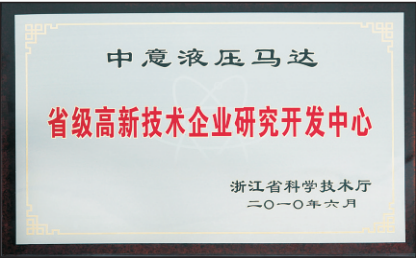
The Company is situated in Zhenhai Economic Development Zone in the east of Zhejiang Province in the Yangtze River Delta that is the most developed and has the greatest potential in economy in China, with convenient sea, land and air transportation conditions. The Company is 20km away from Ningbo Lishe International Airport, and 10km away from Beilun Seaport (one of four largest deep-water seaports in the world). The completed Ningbo Hangzhou Bay Crossing-sea Bring merges Ningbo into the Shanghai 2-hour traffic circle.

2015年公司为了加大研发力度成立了太原中意高科液压科技有限公司	In 2015, the company set up Taiyuan Zhongyi Gaoke Hydraulic Technology Co., Ltd. for research.
2015年建立 “浙江省博士后工作站”	In 2015 the company established Zhejiang province postdoctoral workstation.
2015年与中科院宁波材料所成立了 “液压马达耐磨涂层材料研发中心”	In 2015, the company established Hydraulic motor wear resistant coating material research Center.
2014宁波重大科技攻关项目成功验收	In 2014, Ningbo major scientific and technological projects successful acceptance.
2013年安徽芜湖厂区正式投产	In 2013, Anhui Wuhu plant is put into operation officially.
2012年被认定为宁波市企业技术创新团队	In 2012, the company was identified as the technology innovation team in Ningbo City.
2011年建立多功能马达寿命检测中心	In 2011, multifunctional test center for motor life was established.
2010年被认定为浙江省级高新技术企业研究开发中心	In 2010, the company was evaluated as Zhejiang Hi-tech R&D Center.
2009年全面启用 “THOTH” 萨奥思品牌	In 2009, the company launched new brand “THOTH”.
2008年自主研发的ZYH型液压回转装置被列入国家火炬计划项目	In 2008, ZYH Hydraulic Slewer was listed in State Torch Plan.
2008年被评为国家级高新技术企业	In 2008, the company was evaluated State Hi-tech Enterprise.
2005年被评为浙江省高新技术企业 2005年与浙江大学共建 “浙大宁波中意液压马达工程技术研发中心”	In 2005,the company was evaluated Zhejiang Hi-tech Enterprise. In 2005, the company established Zhongyi Hydraulic motor Engineering Technology Center through cooperation with Zhejiang University.
2004年工程技术中心被镇海科技创新 “10+1” 工程评为镇海区重点工程技术中心 2004年被评为宁波市高新技术企业 2004年新厂房落成，全面投入生产使用	In 2004, the Engineering Technology Center was evaluated as key engineering technology center of Zhenhai by Zhenhai Technological Innovation “10+1” Project. In 2004, the Company was evaluated Ningbo Hi-tech Enterprise.
2002年公司网站建成，www.zihyd.com，同年获得自营进出口经营权，产品成功打入国际市场	In 2002, the Company's website www.zihyd.com was established, and in the same year, the Company was granted with import-export operations right for its materials and products. Its products successfully enter international market.
2001年与上海大学合作建立中意液压工程技术中心	In 2001, the Company established Zhongyi Hydraulic Engineering Technology Center through cooperation with Shanghai University.
2000年实行股份制，并开发生产液压回转装置和液压绞车同年公司通过了ISO9001国际质量体系认证	In 2000, joint stock system transformation was executed in the Company, and it developed and manufactured hydraulic slewer and hydraulic winch. In the same year, the Company passed ISO9001 international quality system certification.
1996年正式更名为宁波中意液压马达有限公司	In 1996, the factory renamed Ningbo Zhongyi Hydraulic Motor Co., Ltd.
1991年研究开发JMDG系列曲轴连杆液压马达	In 1991, the factory researched and developed JMDG Series Radial Piston hydraulic motor.
1989年同上海煤炭科学研究院合作开发生产BM系列摆线液压马达，并建立煤炭科学研究总院上海分院镇海液压研究所	In 1989, the factory developed and produced BM Orbit hydraulic motor through cooperation with Shanghai Coal Science Research Institute, and Coal Science Research Academy Shanghai Branch Zhenhai Hydraulic Research Institute.
1978年试制生产QJM系列钢球马达，同时建立宁波镇海液压机械厂	In 1978, the factory started trial production of QJM sphere hydraulic motor, and meanwhile Ningbo Zhenhai Hydraulic Machinery Factory was established.
1971年10月建厂当时厂名为宁波镇海城关农机厂	The original factory name was Ningbo Zhenhai Chengguan Agricultural Machinery Factory when the factory was set up in October 1971.

国家级高新技术企业
浙江省高新技术企业研究开发中心
ISO9001质量体系认证
ISO14001环境体系认证
OHSAS18001职业健康安全体系认证

全球尖端设备，打造中意产品，“工欲善其事，必先利其器”，中意不惜巨资引进全球最高精设备，以雄厚的制造实力，为社会和广大用户源源不断的奉献优质产品。

Global sophisticated equipment is used for production of Zhongyi products. A handy tool makes a handy man. Zhongyi invests a large quantity of fund to import most sophisticated equipment in the world and with its strong manufacturing strength provide high-quality products to the society and users.

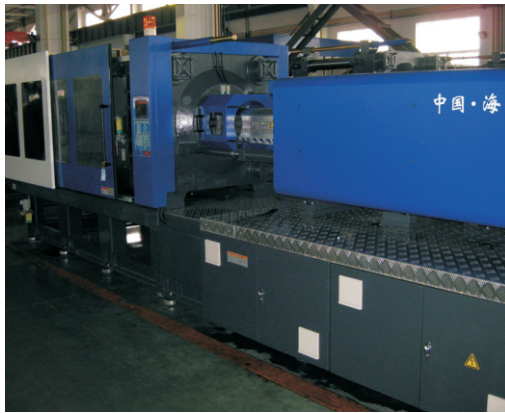


PRODUCTS APPLICATION

产品应用

公司生产的各类产品可广泛应用于矿山建筑工程机械、起重运输设备、重型冶金机械、石油煤矿机械、船舶甲板机械、机床、轻工、塑料机械、地质钻探设备、农业和林业机械、矿物机械、建筑设备和工作平台、割草机、特殊车辆、渔业卷扬机、工具机、木工和锯木机、橡胶机械等各种机械的液压传动系统中。特别适用于注塑机的螺杆驱动、提升绞盘、卷筒的驱动、各种回转机构的驱动履带和轮子行走机构的驱动。

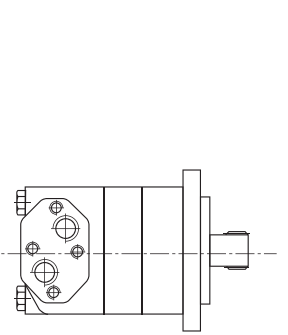
All kinds of products manufactured by the Company can be widely applied in the hydraulic drive systems of mine construction machinery, cranes and transporting equipment, heavy-type metallurgic machinery, petroleum and coal mine machinery, vessel deck machinery, machine tools, light industry, plastic machinery, geological drilling equipment, agricultural and forest machinery, mineral equipment, construction equipment and working platform, lawn mowers, special vehicles, fishery winches, machine tools, carpenter machinery and sawing machines, and rubber machinery. These products are especially applicable to screw drives of plastics injection machines, the drives of lifting winches and winding drums, and driving tracks of rotating mechanisms and the drive of wheel traveling mechanisms.



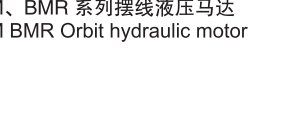
一 内置液压控制系统 INNER HYDRAULIC CONTROL SYSTEM	01
二 ZCM 液压传动装置 ZCM HYDRAULIC TRANSMISSION	
1. 产品介绍 INTRODUCTION	02
2. 型号意义 ORDERING CODE	02
3. 技术参数 TECHNICAL DATA	02
4. 外形安装图 INSTALLATION	03-07
三 ZJM 型带减速器液压马达 ZJM HYDRAULIC MOTOR WITH DECELERATOR	
1. 产品介绍 INTRODUCTION	08
2. 型号意义 ORDERING CODE	08
3. 技术参数 TECHNICAL DATA	08
4. 外形安装图 INSTALLATION	09-10
四 ZYJ 液压绞车 ZYJ HYDRAULIC WINCH	
1. 产品介绍 INTRODUCTION	10
2. 型号意义 ORDERING CODE	10
3. 技术参数 TECHNICAL DATA	11
4. 外形安装图 INSTALLATION	11
五 YJ 轻型液压绞车 YJ LIGHT-DUTY HYDRAULIC WINCH	
1. 产品介绍 INTRODUCTION	12
2. 型号意义 ORDERING CODE	12
3. 技术参数 TECHNICAL DATA	12
4. 外形安装图 INSTALLATION	12-13
六 YJ08X/G 液压绞车 YJ08X/G HYDRAULIC WINCH	
1. 产品介绍 INTRODUCTION	13
2. 外形安装图 INSTALLATION	13
七 AHW 液压绞盘 AHW HYDRAULIC WINCH	
1. 产品介绍 INTRODUCTION	14
2. 型号意义 ORDERING CODE	14
3. 技术参数 TECHNICAL DATA	14
4. 外形安装图 INSTALLATION	14

液压马达及其工程机械产品 (独特的模块化设计)- 让您选择更多, 方便更多。

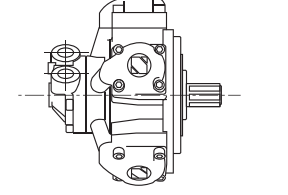
Hydraulic motor and hydraulic motor applied engineerin products(unique modularized design)more chices,more convenience.



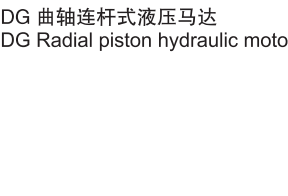
ZBM 带机械制动器摆线液压马达
ZBM Orbit hydraulic motor with braker



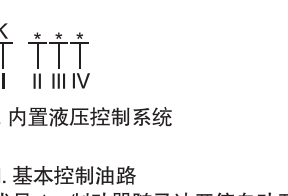
BM、BMR 系列摆线液压马达
BM BMR Orbit hydraulic motor



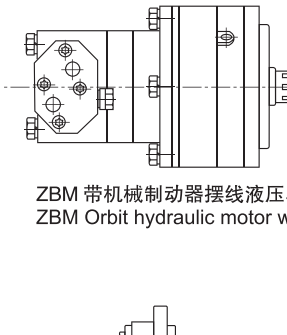
ZJM/B 带减速器摆线液压马达
ZJM/B Orbit hydraulic motor with decelerator



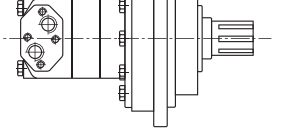
JMDG 曲轴连杆式液压马达
JMDG Radial piston hydraulic motor



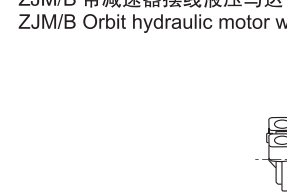
ZJM/C 带减速器曲轴连杆式液压马达
ZJM/C Radial piston hydraulic motor with decelerator



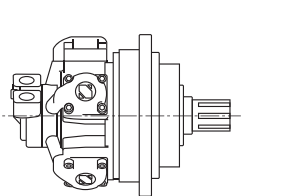
ZCM/B 液压传动装置
ZCM/B Hydraulic Transmission



ZYJ/B 液压绞车
ZYJ/B Hydraulic winch



ZCM/C 液压传动装置
ZCM/C Hydraulic Transmission



ZYJ/C 液压绞车
ZYJ/C Hydraulic winch

K
I II III IV

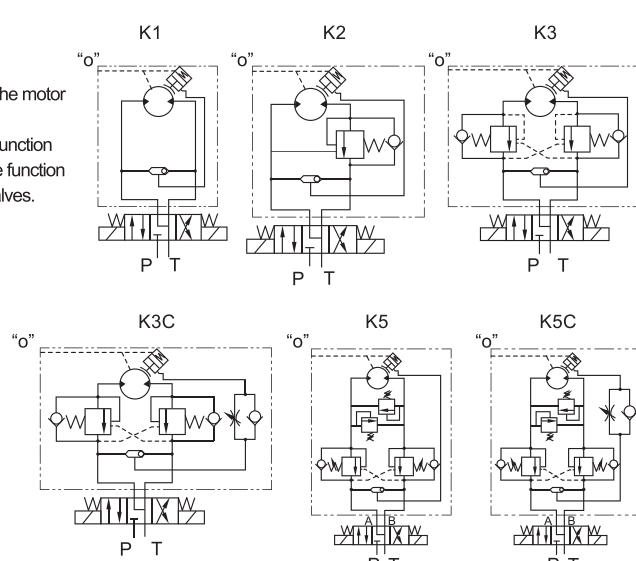
I. 内置液压控制系统
I. inner hydraulic control system

II. 基本控制油路
II. key control loop
代号 1: 制动器随马达开停自动开闭
代号 2: 同上, 且有单向平衡功能
代号 3: 同代号 1 且有双向平衡功能
代号 5: 同代号 3 且有双向安全保护阀

III. 附加制动器打开油路方式
III additional brake open method
代号 1: 电控
代号 2: 手控

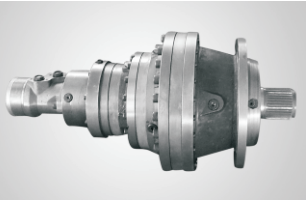
IV. 代号“B”带附加补油油路
IV Code B with additional oil compensation loop
代号“C”有延时制动功能
Code C with delay braking function

注: 1、“O”马达泄油口 应单独用管子与油箱连接, 回油背压 0.2~0.5Mpa, 并应装过过滤器。
2、平衡阀按流量大小分为不同规格, 所以选型时应与客户实际流量相匹配, 否则会引起较大压力损失或出现工作不稳定现象。



Note: 1、“O”-Motor drain port should be connected with the oil tank separately,outlet pressure 0.2~0.5Mpa.Filter is needed.
2、The balance valve according to the flow size of different specifications, so the selection should be matched with the actual flow of customers, otherwise it will cause greater pressure loss or unstable phenomenon.

● 产品介绍 INTRODUCTION



ZCM 液压传动装置由液压马达，多片式摩擦制动器 and 行星齿轮减速器等组成，具有尺寸小、重量轻、扭矩大、启动效率和传动效率高、噪音低等特点。输出轴可承受较大径向力。液压传动装置适用于各种机械的液压传动机构，回转机构等设备中。

ZCM hydraulic transmission is made up of hydraulic motor, multi-disc friction braker and planet gearbox decelerator, Having Characteristics of small, light, large torque, high start and transmission efficiency, low noise, etc. Output shaft can bear large radial force. Hydraulic transmission can be applied in kinds of hydraulic transmission system and rotating facilities.

● 型号意义 ORDERING CODE

ZCM / - -

1 2 3 4 5 6 7 8

1. 中意液压传动装置 ZCM Hydraulic transmission
2. 减速级数，1 为一级减速，2 为二级减速，3 为三级减速，4 为四级减速，后跟 03，06，09，12，为基座号 Decelerating Grade: 1—one grade, 2—two grade, 3—three grade, 4—four grade, Followed by 03, 06, 09, 12, as the base.
3. 额定输出扭矩 Rated output torque
4. 马达类型 Associated motor: B- 摆线马达 Orbit motor C- 五星马达 Radial piston motor D- 高速柱塞马达 High piston motor E- 摆缸马达 Swivelling cylinder motor
5. 安装法兰代号 Installation dimension: F- 立式前法兰 Vertical front flange M- 立式中法兰 Vertical middle flange R- 立式后法兰 Vertical retral flange
6. 输出轴型式 Shaft type: H- 标准矩形花键 Standard spline key B- 标准平键 Standard flat key K- 渐开线花键 Involute spline Z- 齿轮 Gear
7. 内置液压控制系统（见第 1 页说明）Inner hydraulic control system (see page 1)
8. 进油口尺寸（参照所配液压马达油口尺寸）ports

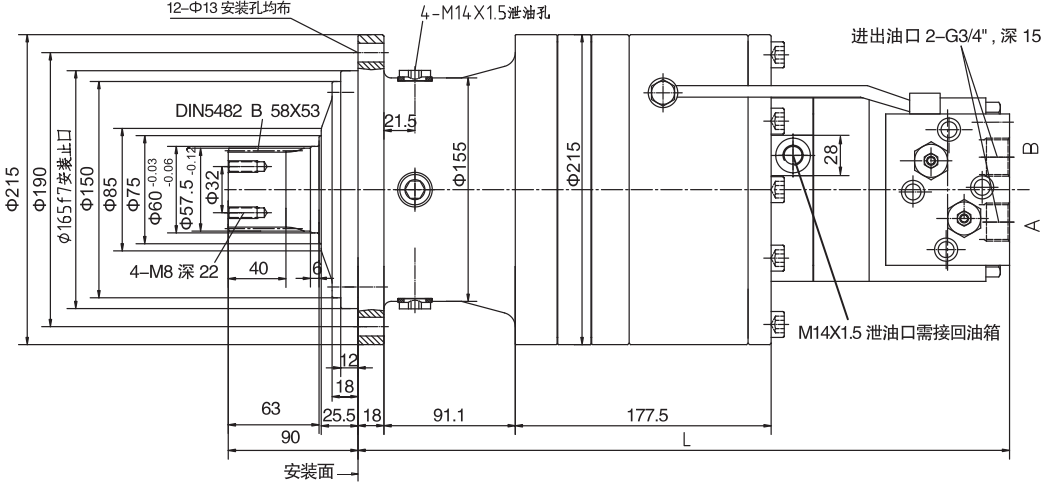
例：ZCM1.03-3000/B-F-Z-K3Y表示为中意液压传动装置，一级行星齿轮减速，额定输出扭矩3000N.m，配摆线液压马达，立式前法兰，输出形式为齿轮输出，带K3阀（带双向平衡阀和一个梭阀），进油口为Y（油口G3/4”、泄油口M14X1.5）。

Example: ZCM1.03-3000/B-F-Z-K3Y says ZCM hydraulic transmission device, one grade planetary gear reducer, rated output torque of 3000N.m, matched Orbit motor, Vertical front flange, gear output, with K3 valve (with two-way balancing valve and a shuttle valve), oil inlet and outlet Y (oil port G3/4”drain port M14X1 5)

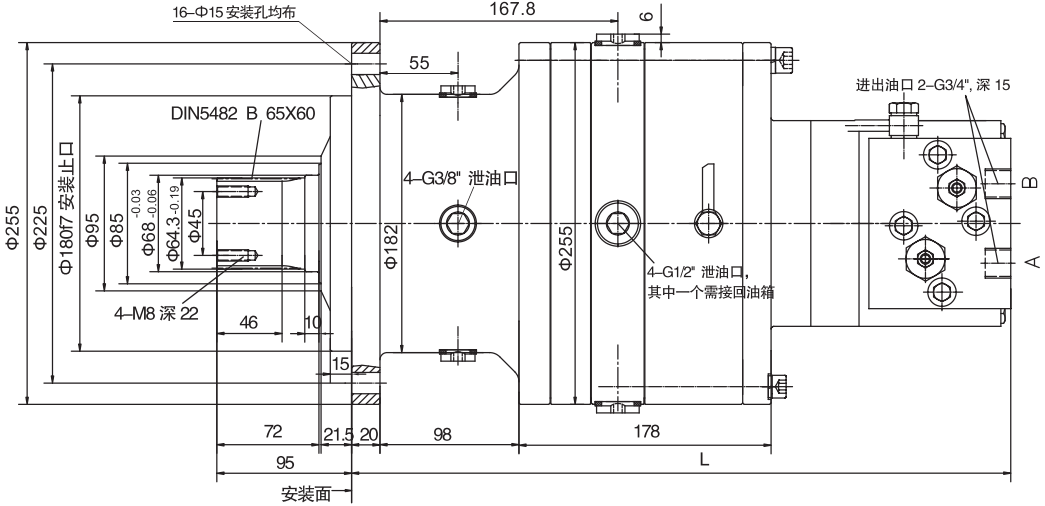
● 技术参数 TECHNICAL DATA

型号 Type	排量 Displacement ml/r	输出扭矩 N.m		工作压力 Mpa		转速范围 Speed range r/min	制动器 Braker		减速器 传动比 Ratio of gearbox	液压马达 Associated motor	重量 Weight kg	长度 L Length mm
		额定 Rated torque	最大 Max. torque	额定 Rated pressure	最高 Max. pressure		开启压力 Mpa Releasing pressure	制动扭矩 N.m Brake torque				
ZCM1.03-1000/B	728.6	1000	1300	11.5	15	9-60	2.6	1660	4.58	BM4-160	50	429
ZCM1.03-1500/B	921.3	1500	1750	13.6	16	9-60	2.6	2216	4.58	BM4-200	50	433.5
ZCM1.03-2000/B	1456.8	2000	2700	11.5	16	9-50	2.6	2771	4.58	BM4-320	50	446
ZCM1.03-3000/B	1842.6	3000	3250	13.7	15	9-40	2.6	3880	4.58	BM4-400	50	455
ZCM1.06-4000/B	2731.3	4000	5000	12.3	15.5	7-40	3.0	7430	4.42	BM5-630	110	474
ZCM1.06-5000/B	3481.1	5000	6000	12.0	14.5	6-35	3.0	7430	4.42	BM5-800	110	488
ZCM1.06-6000/B	4284.4	6000	6500	11.7	12.7	6-30	3.0	7430	4.42	BM5-985	110	503
ZCM2.06K-4000/B	3990.6	4000	5000	8.5	10.7	3-15	3.0	9260	25.13	BM4-160	90	435
ZCM2.06K-5000/B	3990.6	5000	6000	10.6	12.8	3-15	3.0	9260	25.13	BM4-160	90	435
ZCM2.06K-6000/B	5046.1	6000	6500	10.0	11.0	3-15	3.0	9260	25.13	BM4-200	90	439
ZCM2.12-10000/B	6971.9	10000	12500	12.0	15.0	2-15	2.8	25900	22.14	BM5S1-315	200	576.5
ZCM2.12-12500/B	8849.4	12500	15000	11.7	14.0	1.5-15	2.8	25900	22.14	BM5S1-400	200	583.5
ZCM3000/C	1520	3000	3820	15.7	20	5-52	2.8	7500	6	JMDG3-250	110	431
ZCM3500/C	1800	3500	4500	15.5	20	5-52	2.8	7500	6	JMDG3-300	110	431
ZCM4000/C	2100	4000	5260	15.2	20	5-52	2.8	7500	6	JMDG3-350	110	431

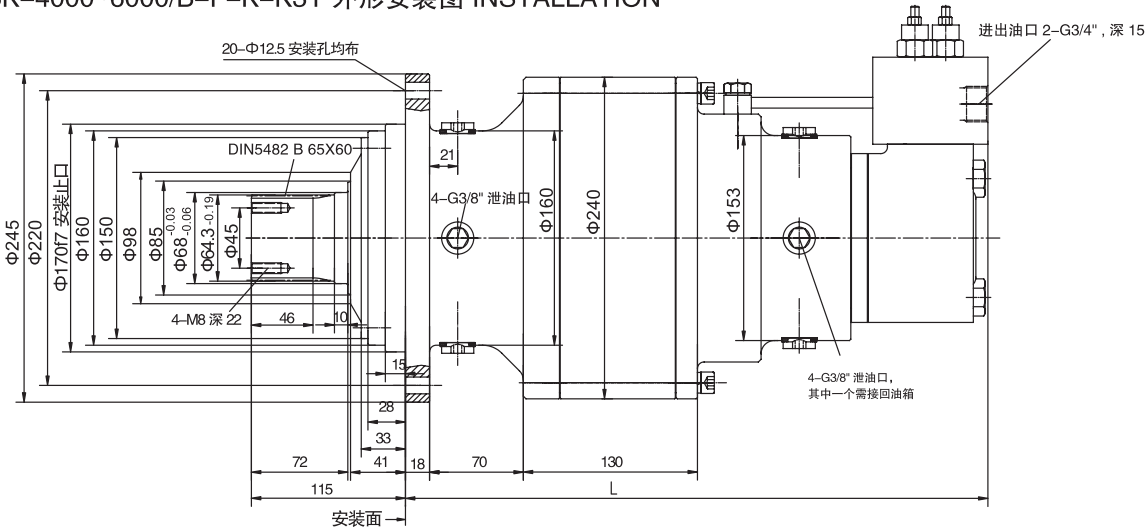
● ZCM1.03-1000~3000/B-F1-K1-K3Y 外形安装图 INSTALLATION



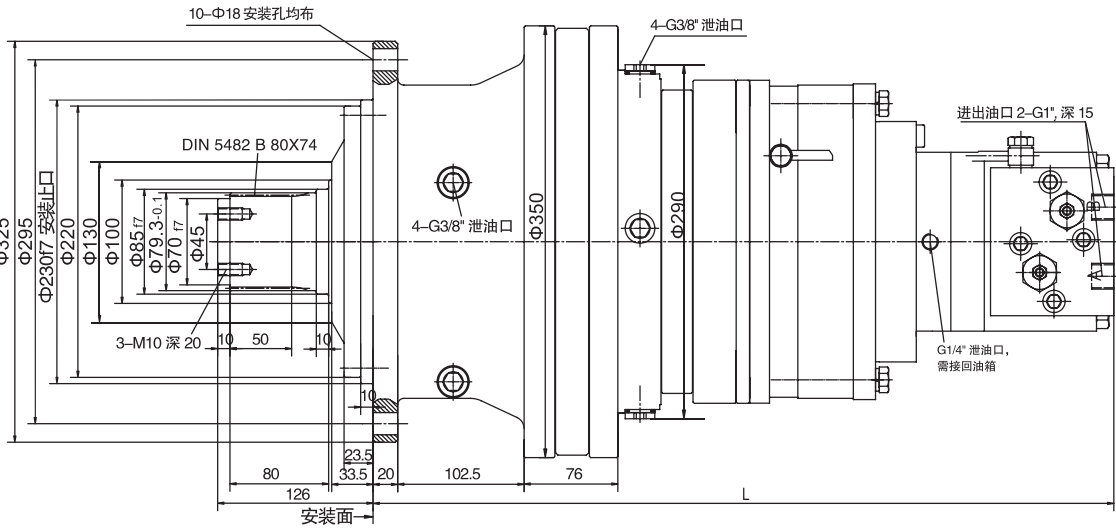
● ZCM1.06-4000~6000/B-F6-K-K3Y1 外形安装图 INSTALLATION



● ZCM2.06K-4000~6000/B-F-K-K3Y 外形安装图 INSTALLATION



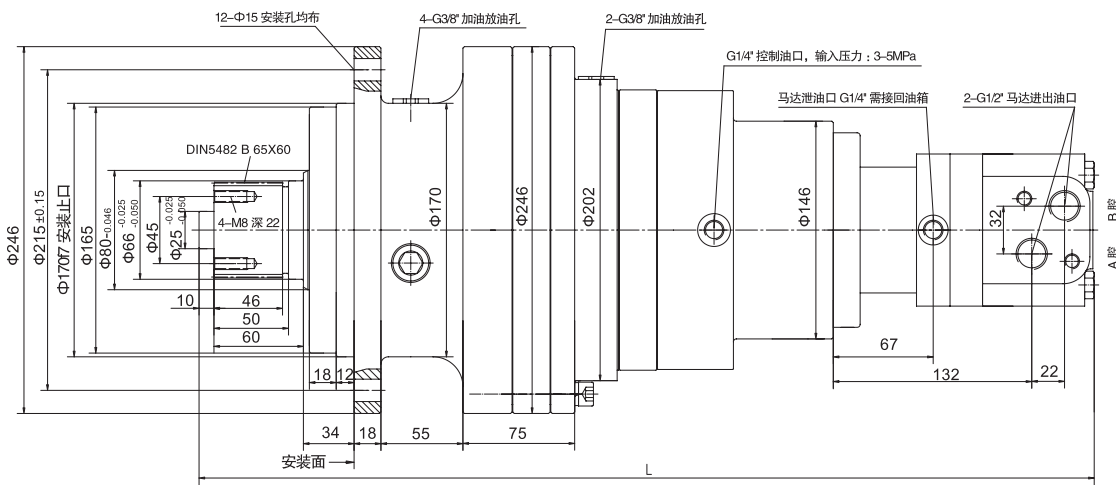
● ZCM2.12-10000~12500/B-F-K-K3Y 外形安装图 INSTALLATION



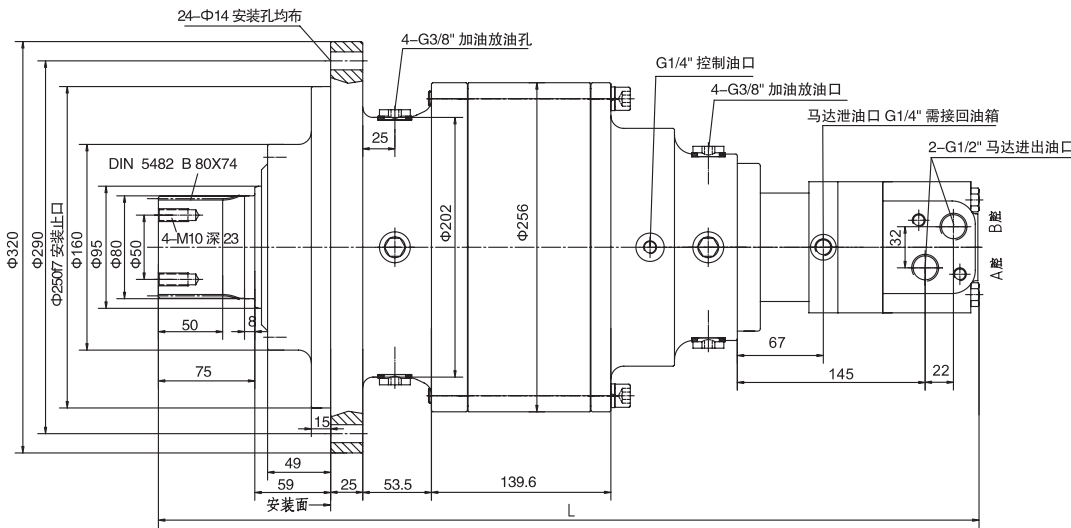
● 技术参数 TECHNICAL DATA

型号 Type	排量 Displacement ml/r	输出扭矩 N.m		工作压力 Mpa		转速范围 Speed range r/min	制动器 Braker			减速器 传动比 Ratio of gearbox	液压马达 Associated motor	重量 Weight kg	长度 L Length mm
		额定 Rated torque	最大 Max. torque	额定 Rated pressure	最高 Max. pressure		开启压力 Mpa Releasing pressure	最大允许压力 Mpa Max. Permit pressure	制动扭矩 N.m Brake torque				
ZCM2.03-1500/B	1783.9	1500	2000	7.4	10.0	3-15	1.1	5	4742	22.16	BM3-80	75	594
ZCM2.03-2000/B	2227.1	2000	3000	7.9	12.0	3-15	1.1	5	4742	22.16	BM3-100	75	597.5
ZCM2.03-3000/B	2798.8	3000	4000	9.0	12.0	3-15	1.1	5	4742	22.16	BM3-125	75	602
ZCM2.06-4000/B	2509.5	4000	4500	13.9	15.7	3-15	3.0	-	9201	24.97	BM3-100	100	628
ZCM2.06-5000/B	4015.2	5000	6000	10.5	12.6	3-12	3.0	-	9201	24.97	BM3-160	100	638.5
ZCM2.06-6000/B	5016.5	6000	6500	10.4	11.3	3-10	3.0	-	9201	24.97	BM3-200	100	645.5
ZCM2.09-7000/B	5804.9	7000	8000	10.5	12.0	1.4-10	2.4	-	8184	36.1	BMRS-160	120	698
ZCM2.09-8000/B	7252.5	8000	9000	9.6	10.8	1.4-8.3	2.4	-	8184	36.1	BMRS-200	120	705
ZCM2.09-9000/B	9118.9	9000	10000	8.6	9.6	1.4-5.5	2.4	-	8184	36.1	BMRS-250	120	714
ZCM3.07-7000/B	5124.6	7000	8000	11.9	13.6	1.0-8	2.4	-	12732	63.66	BMRS-80	95	647.5
ZCM3.12-8000/B	9517.4	8000	10000	6.7	8.0	0.3-5.0	1.1	5	20000	94.7	BMR-100	135	718
ZCM3.12-10000/B	11960.6	10000	12500	6.6	8.0	0.3-4.0	1.1	5	20000	94.7	BMR-125	135	722
ZCM3.12-12500/B	15227.8	12500	15000	6.5	8.0	0.3-3.5	1.1	5	20000	94.7	BMR-160	135	728
ZCM3.15-15000/B	15659.2	15000	20000	8.4	11.2	0.5-4.0	3.0	-	35885	97.383	BM3-160	140	839.5
ZCM3.20-20000/B	16262.9	20000	25000	10.5	13.2	0.5-3.0	3.0	-	37218	161.82	BM3-100	260	845.5
ZCM3.38-38000/B	24047.5	38000	41300	13.8	15.0	0.3-2.5	3.0	-	87584	190.4	BM3-125	300	922
ZCM4.12-12500/D	5838	12500	15000	18.5	22.2	0.3-10	0.9	-	46219	486.5	A2F12W6.1	150	675.6

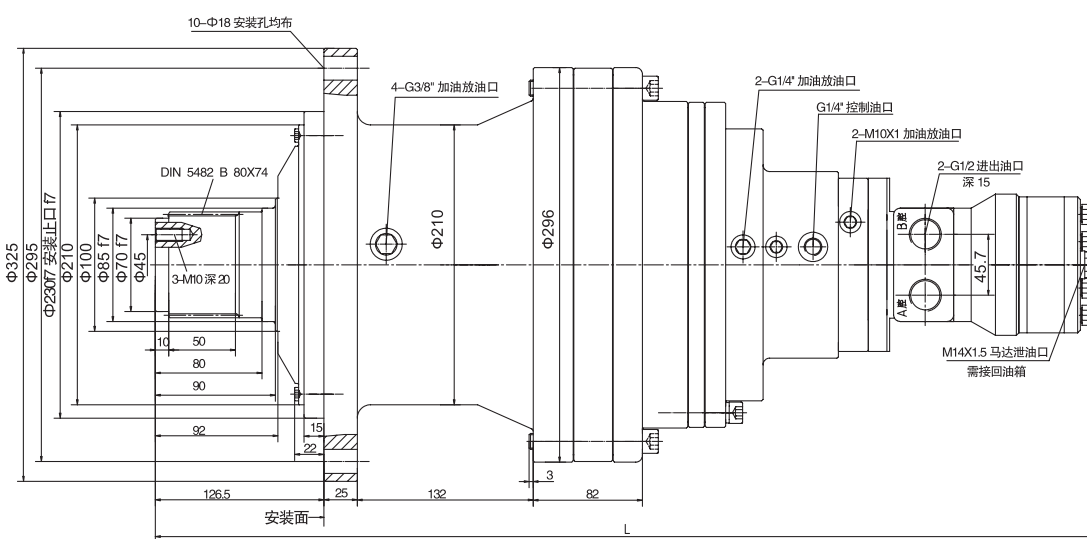
● ZCM2.03-1500~3000/B-F-K-Y 外形安装图 INSTALLATION



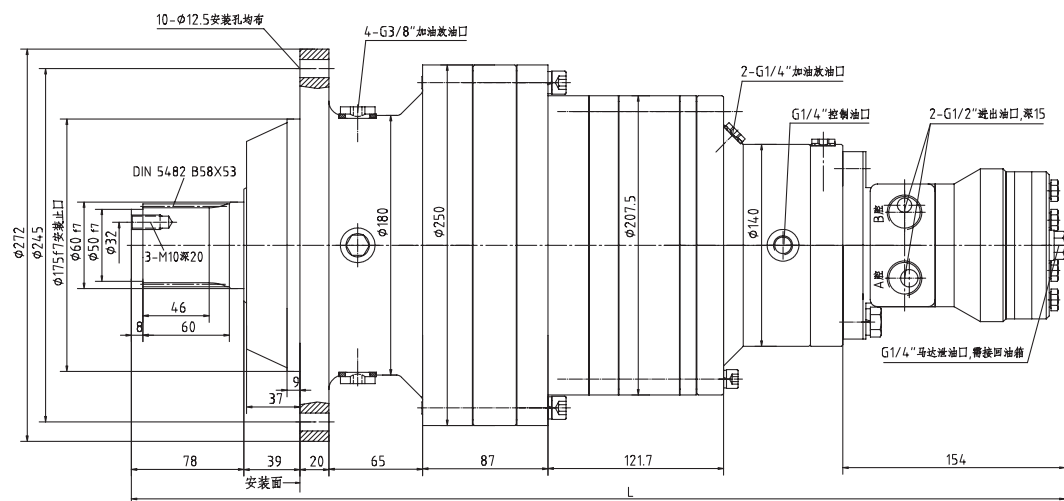
● ZCM2.06-4000~6000/B-M-K-Y 外形安装图 INSTALLATION



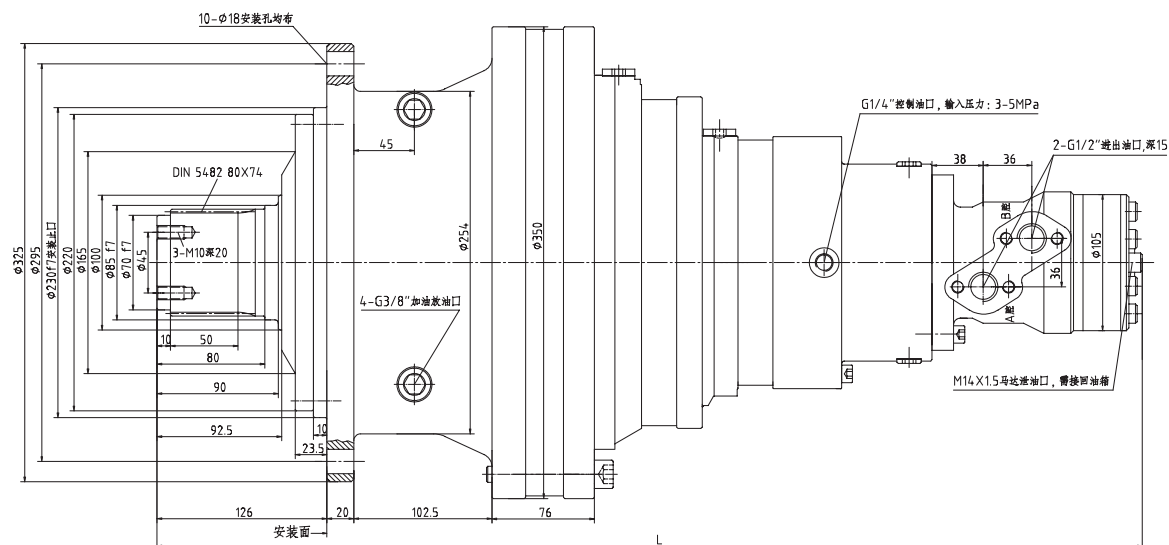
● ZCM2.09-7000~9000/B-F-K-Y 外形安装图 INSTALLATION



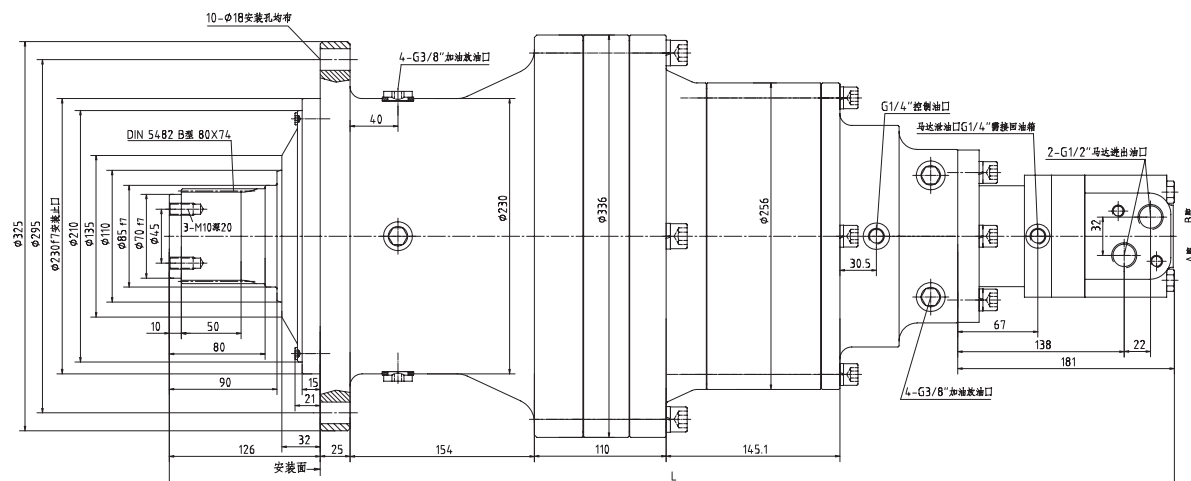
● ZCM3.07-7000/B-F-K-Y10 外形安装图 INSTALLATION



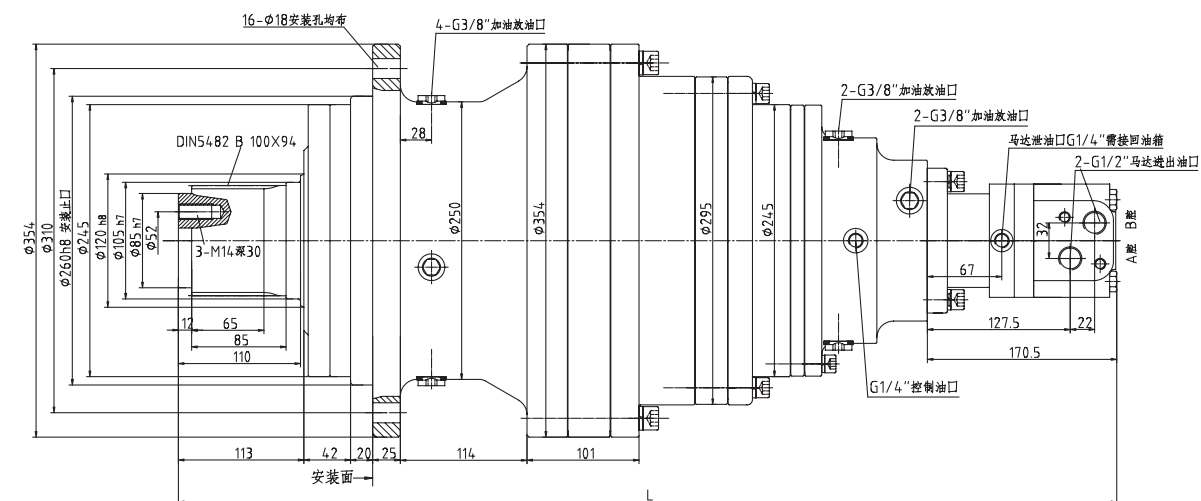
● ZCM3.12-8000~12500/B-F-K-Y 外形安装图 INSTALLATION



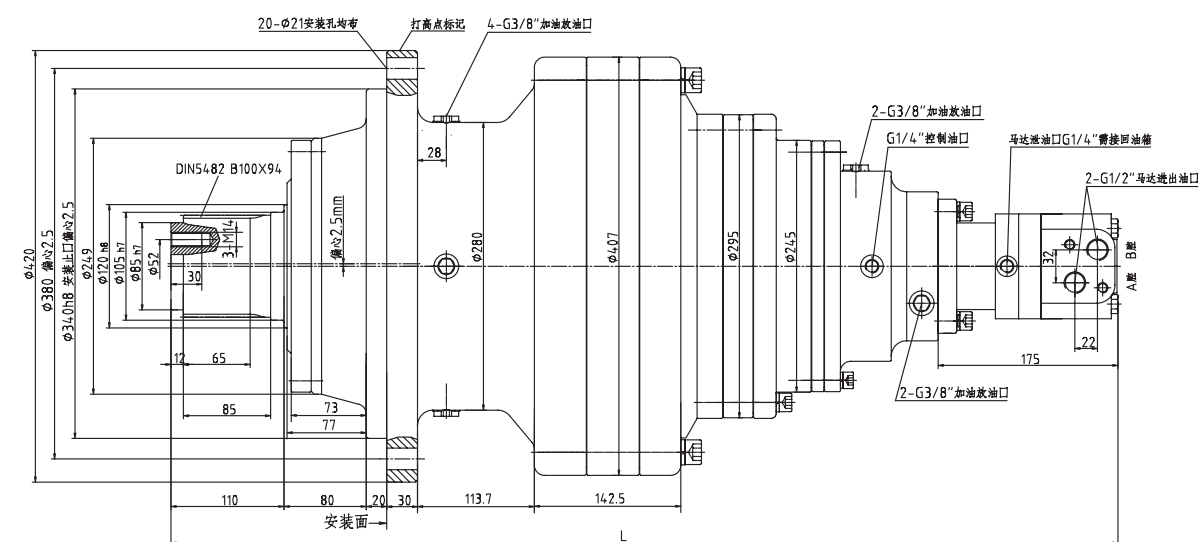
● ZCM3.15-15000/B-F1-K1-Y 外形安装图 INSTALLATION



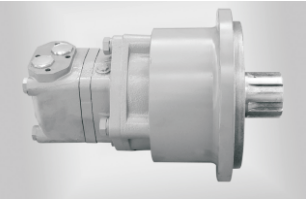
● ZCM3.20-20000/B-F-K-Y 外形安装图 INSTALLATION



● ZCM3.38-38000/B-F-K-Y 外形安装图 INSTALLATION



● 产品介绍 INTRODUCTION



ZJM 型带减速器液压马达是由液压马达和行星齿轮减速器组合而成。具有体积紧凑、低速稳定性好、价格性能比高的特色。特别适合于需要径向尺寸小、转速低、扭矩大的场合。

ZJM decelerator associated hydraulic motor is made up of planet gear decelerator and hydraulic motor. Small, stable at low speed, high performance and low price. Especially fit for small radial space, low speed and large torque needed working place.

● 型号意义 ORDERING CODE

ZJM ☐ ☐/ ☐- ☐- ☐- ☐ ☐

1 2 3 4 5 6 7 8

- 1. 中意带减速器的液压马达 ZJM Hydraulic Motor with Decelerator
- 2. 减速级数，1 为一级减速，2 为二级减速，3 为三级减速，4 为四级减速，后跟 03，06，09，12 为基座号 Decelerating Grade: 1-one grade, 2-two grade, 3-three grade, 4-four grade, Followed by 03, 06, 09, 12 as the base.
- 3. 总排量 Total Displacement
- 4. 马达类型 Associated motor: B- 摆线马达 Orbit motor C- 五星马达 Radial piston motor D- 高速柱塞马达 High piston motor E- 摆缸马达 Swivelling cylinder motor
- 5. 安装法兰代号 Installation dimension: F- 立式前法兰 Vertical front flange M- 立式中法兰 Vertical middle flange R- 立式后法兰 Vertical retral flange
- 6. 输出轴型式 Shaft type: H- 标准矩形花键 Standard spline key B- 标准平键 Standard flat key K- 渐开线花键 Involute spline Z- 齿轮 Gear
- 7. 内置液压控制系统（见第 1 页说明）Inner hydraulic control system (see page 1)
- 8. 进油口尺寸（参照所配液压马达油口尺寸）ports

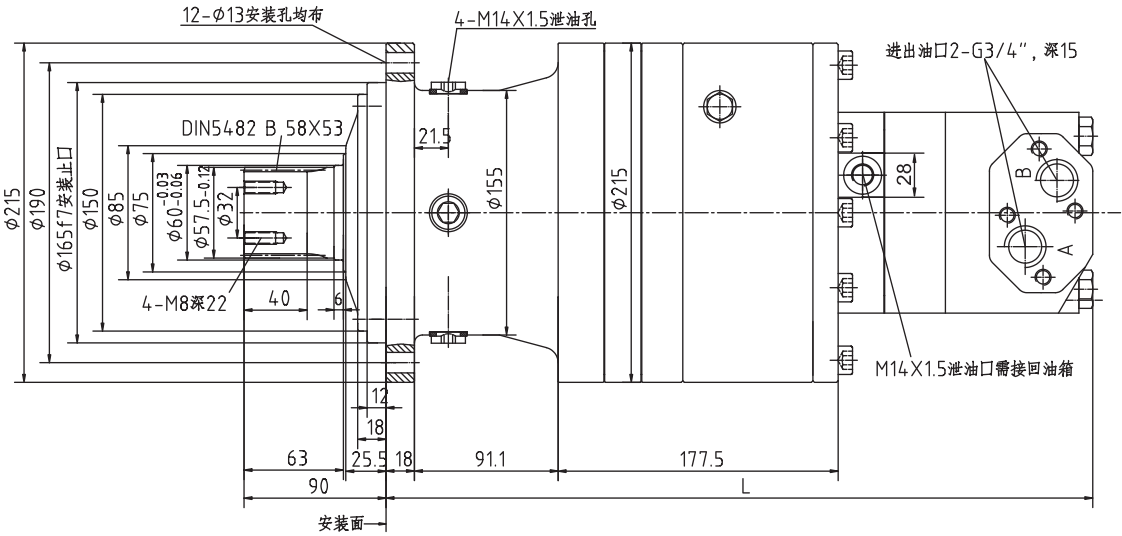
例：ZJM1.03-1160/B-F-Z-Y 表示为中意带减速器的液压马达，一级行星齿轮减速，总排量为 1160ml/r，配摆线液压马达，立式前法兰，输出形式为齿轮输出，不带阀，进油口为 Y（油口 G3/4”、泄油口 M14X1.5）。

Example: ZJM1.03-1160/B-F-Z-Y says ZJM hydraulic Motor with Decelerator, one grade planetary gear reducer, Total displacement of 1160 ml/r, matched Orbit motor, Vertical front flange, gear output, without valve, oil inlet and outlet Y (oil port G3/4” , drain port M14X1.5).

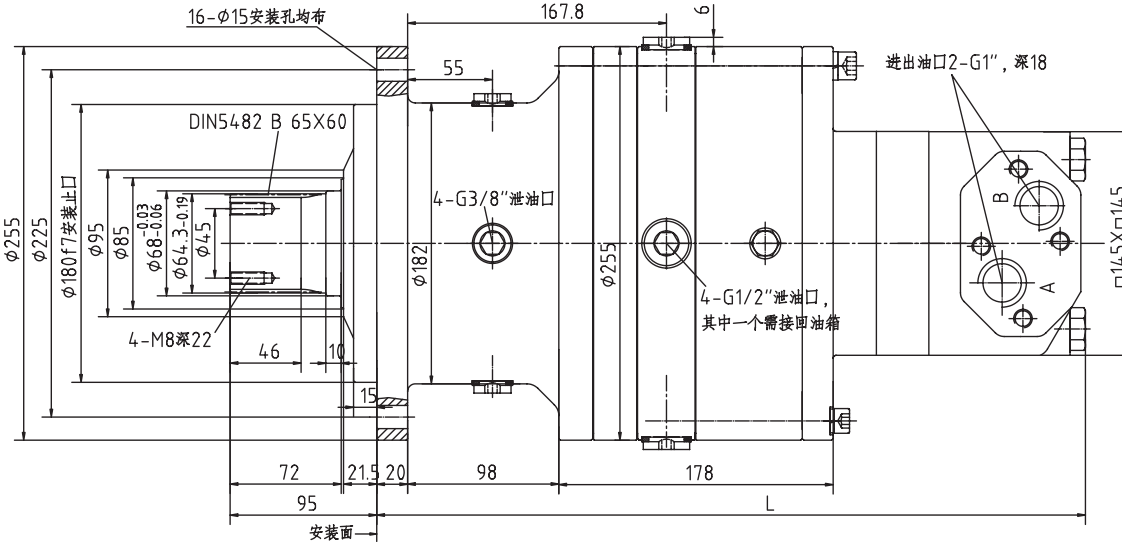
● 技术参数 TECHNICAL DATA

型号 Type	排量 Displacement ml/r	最高工作压力 Max.pressure Mpa	最大工作扭矩 Max.torque N•m	转速范围 Speed range r/min	减速器传动比 Ratio of gearbox	液压马达 Associated motor	重量 Weight kg	长度 L Length mm
ZJM1.03-730/B	728.6	11.5	1000	9-60	4.58	BM4-160	40	425
ZJM1.03-920/B	921.3	13.6	1500	9-60	4.58	BM4-200	40	429.5
ZJM1.03-1450/B	1456.8	11.5	2000	9-50	4.58	BM4-320	40	442
ZJM1.03-1840/B	1842.6	13.7	3000	9-40	4.58	BM4-400	40	451
ZJM1.06-2730/B	2731.3	12.3	4000	7-40	4.42	BM5-630	100	465.5
ZJM1.06-3480/B	3481.1	12	5000	6-35	4.42	BM5-800	100	479.5
ZJM1.06-4285/B	4284.4	11.7	6000	6-30	4.42	BM5-985	100	494.5
ZJM600/C	580	20	1500	3-65	6	JMDG2-100	45	350
ZJM900/C	940	20	2260	3-65	6	JMDG2-150	45	350
ZJM1000/C	1050	20	2630	3-65	6	JMDG2-175	45	350
ZJM1200/C	1200	20	3000	3-65	6	JMDG2-200	45	350
ZJM1500/C	1520	25	4780	2-58	6	JMDG3-250	85	345
ZJM1800/C	1730	20	4500	2-58	6	JMDG3-300	85	345
ZJM2100/C	2100	20	5260	2-58	6	JMDG3-350	85	345
ZJM4200/C	4258	14.8	8000	7-35	5.6	JMDG6-750	—	497.5
ZJM6300/C	6307	15	12000	6-35	5.6	JMDG8Y-1100	—	502.5
ZJM7000/C	6900	20	17500	3-65	5	JMDG16-1400	—	478
ZJM10000/C	10000	20	25400	3-45	5	JMDG16-2000	—	478
ZJM12000/C	12000	16	24000	3-40	5	JMDG16-2400	—	478

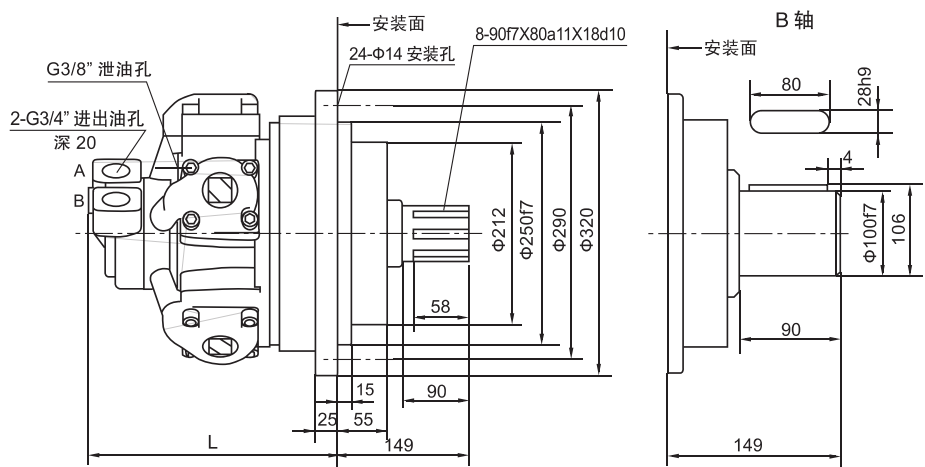
● ZJM1.03-730~1840/B-F1-K1-Y 外形安装图 INSTALLATION



● ZJM1.06-2730~4285/B-F6-K-Y 外形安装图 INSTALLATION

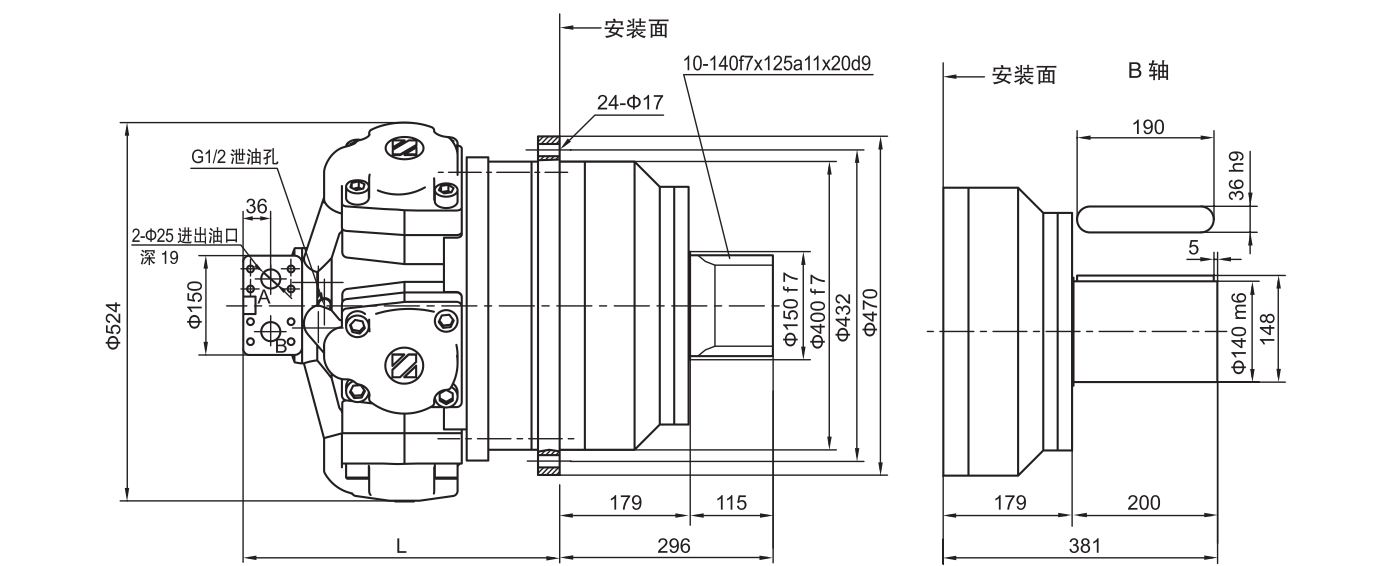


● ZJM1500~2100/C-M20-H20-D31 外形安装图 INSTALLATION

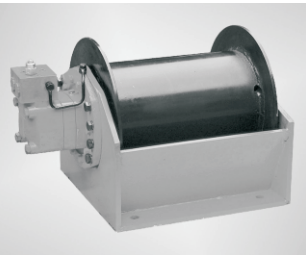


注 :1、本公司有多种法兰输出端型式。 1.All kinds of flanges and shaft types are available.
2、特殊要求可与本公司联系。 2.Special types can be supplied.

● ZJM7000~12000/C-M-H-D47 外形安装图



● 产品介绍 INTRODUCTION



ZYJ 液压绞车是由液压马达，多片式摩擦制动器，行星齿轮减速器，卷筒和支架等部件组成，以整体形式提供。液压绞车自带梭阀和平衡阀，梭阀控制制动器，平衡阀既能防止绞车因工作机构的自重而下落，又能稳定绞车的提升或下降。因此，本系列液压绞车除具有的可以无级改变提升或下降速度，起动性好的优点外，还具有运转平稳，工作可靠，安装使用方便等特点。广泛用于各种车载起重机，铁路、采矿、船舶、港口等起重设备上。

ZYJ hydraulic winch is made up of hydraulic motor,multi-disc friction brake, planet gearbox decelerator,spool and bracket as a whole.There are shuttle valve and balance valve in the lifting weight from dropping, also it can keep the loading and unloading stable. Stepless speed, high starting efficiency, reliable, easy to install and control. Widely applied in all kinds of crane for railway transport, shipping, mining, port, etc.

● 型号意义 ORDERING CODE

ZYJ □ □ □ / □ - □ - □ □
1 2 3 4 5 6 7 8

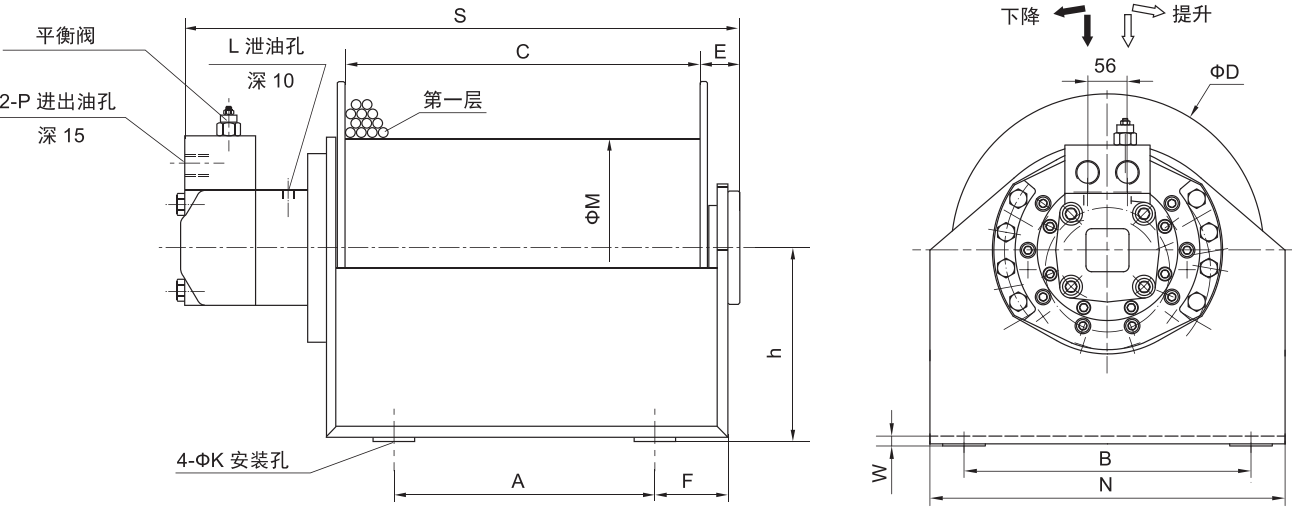
- 中意液压绞车 ZYJ Hydraulic winch
- 最大起吊重量 The max. lifting weight 3~3000kg 2.5~2500kg 3.5~3500kg
- 基座形式 Type of bracket X: 悬臂式 Cantalever B: 卧式 Horizontal
- 省略带制动器, a- 无制动器 a-Without braker
- 液压马达类型 Associated motor B: 摆线马达 Orbit hydraulic motor C: 五星马达 Radial piston hydraulic motor
F: 摆缸马达 Swivelling cylinder hydraulic motor
- 省略不带压轮 G- 带压轮 G-With pressing oil
- 内置液压控制系统 (见 1 页说明) Inner hydraulic control system (see page 1)
- 进出油口尺寸 (参照所配液压马达油口尺寸) ports

● 技术参数 TECHNICAL DATA

型号 Type	最大拉力 (Max Pull) X10N		最大拉力 时的压差 Working Pressure MPa	绳索层数 Rope Layers n ^o	钢丝绳直径 * Suggested Rope Diameter mm	钢丝绳容量 Rope Capaciity m	绞车排量 Displac Ement ml/r	钢丝绳的最大速度 Max Rope Speed m/min		配用马达 Associated motor	重量 Weight kg
	第一层拉力 Firstn ^o	最后层 Lastn ^o						第一层 Firstn ^o	最后层 Lastn ^o		
ZYJ2B	2300	1850	13.9	4	12	80	1890	34	40	BM4-320	130
ZYJ2Ba	2300	1850	13.9	4	12	80	1890	34	40	BM4-320	125
ZYJ2.5B	2500	1990	13	4	13	120	2400	30	36	BM5-400	209
ZYJ3B	3000	2400	13	4	13	120	3000	26	32	BM5-500	210
ZYJ3.5B	3500	2800	13	4	13	120	3750	22	28	BM5-630	211
ZYJ4B	4000	3100	21.2	4	16	120	2869	31	38.5	BGM05-150	260
ZYJ5B	5000	3790	21.2	4	16	125	3629	20	25	BGM05-200	270
ZYJ8B	8000	6344	20.5	4	20	170	8007.8	26	32	A2FE80	606
ZYJ10B	10000	7630	25	4	24	150	8007.8	23	28	A2FE80	606

带 * 钢丝绳直径应根据实际机构的工作级别由用户选择确定，不同的钢丝绳直径会改变绞车的容绳量。
*Diameter is Selected according to the working condltion, the rope length will change along with different rope diameter.

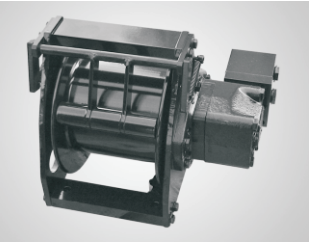
● ZYJ2B/B~3.5B/B 外形安装图 INSTALLATION



● 外形安装尺寸 DIMENSIONS

型号 Type	外形 (Outline) mm								安装 (Setting) mm				油口 (Ports)	
	C	D	h	E	F	M	N	S	A	B	K	W	P	L
ZYJ2B	280	374	198	52	55	245	418	646	230	340	20	20	G3/4"	G1/4"
ZYJ2Ba	280	374	198	52	55	245	418	606	230	340	20	20	G3/4"	G1/4"
ZYJ2.5B	450	440	248	58	70	290	500	745	380	404	22	18	G1"	G1/4"
ZYJ3B	450	440	248	58	70	290	500	745	380	404	22	18	G1"	G1/4"
ZYJ3.5B	450	440	248	58	70	290	500	745	380	404	22	18	G1"	G1/4"

● 产品介绍 INTRODUCTION



YJ 系列液压绞车由内置摆线液压马达，行星齿轮减速器，机械制动器等组成。采用螺纹连接钢结构机架，配置梭阀，平衡阀等控制系统，其结构紧凑、占用空间小，它适用于船舶、码头和汽车等各种起重和牵引的设备中。

YJ hydraulic winch is made up of inner BM orbit hydraulic motor, planet gearbox decelerator, mechanism brake, etc. It adopts steel structure's machine frame using thread conjunction, the control system of which includes shuttle valve and balance valve, etc, having compact design and small size, adapted to lifting and traction facilities, such as shipping、port、car、etc.

● 型号意义 ORDERING CODE

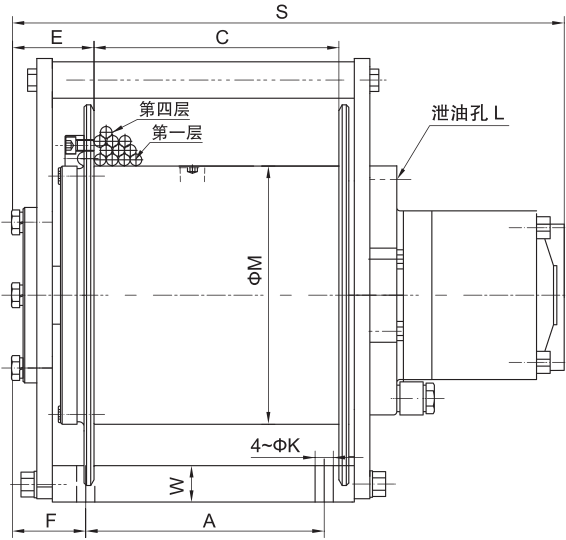
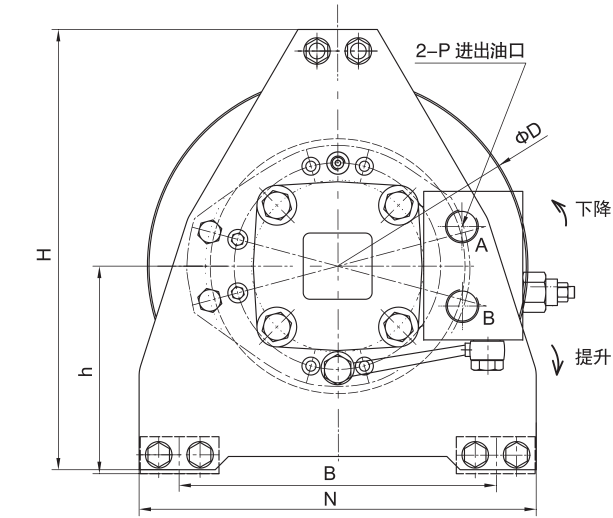
YJ □□□/□-□-□□
1 2 3 4 5 6 7

1. 中意液压轻型绞车 YJ Hydraulic winch
2. 最大起吊重量 The max. lifting weight 08-800kg 10-1000kg
3. 基座形式 Type of bracket X: 悬臂式 Cantalever B: 卧式 Horizontal
4. 省略不带压轮 G- 带压轮 G-With pressing oil
5. 容绳量 Rope capacity (m)
6. 内置液压控制系统 (见 1 页说明) Inner hydraulic control system (see page 1)
7. 进出油口尺寸 (参照所配液压马达油口尺寸) ports

● 技术参数 TECHNICAL DATA

型号 Type	最大拉力 (Max Pull) X10N		最大拉力时的压差 Working Pressure MPa	绳索层数 Rope Layers n°	钢丝绳直径 * Suggesied Rope Diameter mm	钢丝绳容量 Rope Capacitiy m	绞车排量 Displac Ement ml/r	钢丝绳的最大速度 Max Rope Speed m/min		液压马达 Associated Motor	重量 Weight kg
	第一层拉力 Firstn°	最后层 Lastn°						第一层 Firstn°	最后层 Lastn°		
YJ08X	800	650	12	4	7	54	500	40	45	BM3-100	42
YJ08	800	650	12	4	7	54	500	40	45	BM3-100	42
YJ10	1000	800	12.8	4	8	53	625	36	41	BM3-125	46
YJ12	1200	1000	10.3	4	9	48	800	30	35	BM3-160	46
YJ15	1500	1250	12.5	5	10	74	1250	40	48	BM4-250	102
YJ18	1800	1500	12.2	4	11	52	1600	30	36	BM4-320	103
YJ20	2000	1650	13.2	4	12	50	1600	30	36	BM4-320	103

● YJ08 液压绞车外形安装图 INSTALLATION



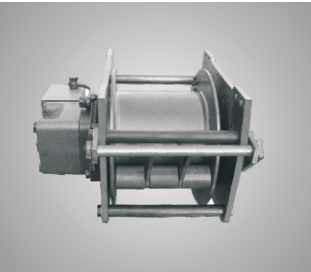
● 外形安装图 DIMENSIONS

型号 Type	外形 (Outline) mm									安装 (Setting) mm				油口 (Ports)	
	C	D	h	H	E	F	M	N	S	A	B	K	W	P	L
YJ08	148	230	125	268	56.5	44	156	240	345	146	192	11	20	G1/2"	G1/4"
YJ10	174	256	132	286	56.5	48	168	280	371	170	240	15	20	G1/2"	G1/4"
YJ12	174	256	132	286	56.5	48	168	280	376	170	240	15	20	G1/2"	G1/4"
YJ15	186	348	186	392	66.5	66	216	370	416	170	300	17	25	G3/4"	G1/4"
YJ18	186	348	186	392	66.5	66	216	370	423	170	300	17	25	G3/4"	G1/4"
YJ20	186	348	186	392	66.5	66	216	370	423	170	300	17	25	G3/4"	G1/4"

1. 表中钢丝绳直径为样本建议，用户应按实际机构的工作级别确定，不同的钢绳直径会改变表中的相关数据。
2. 用户如对容绳量、安装联接、液压控制系统、压紧辊等提出不同要求，可以咨询本公司。

YJ08X/G 液压绞车 YJ08X/G Hydraulic Winch

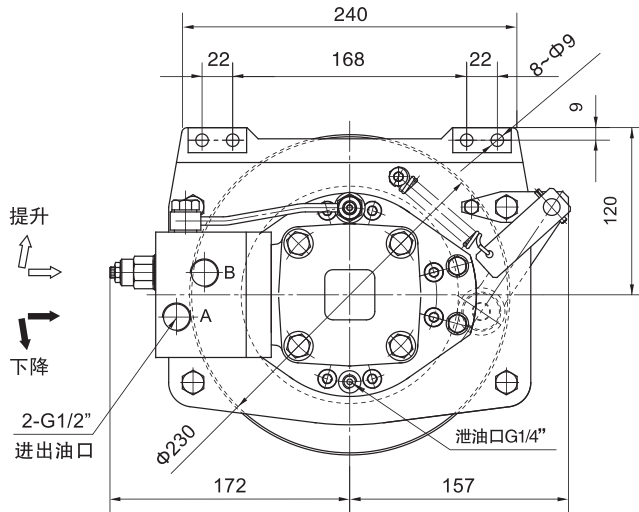
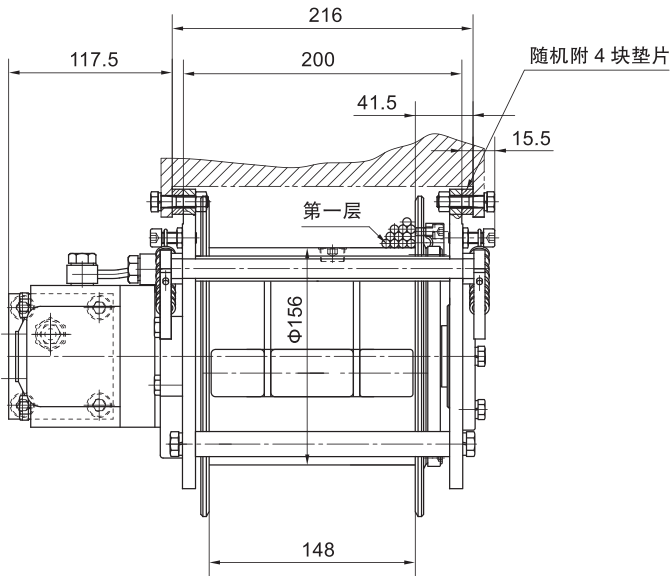
● 产品介绍 INTRODUCTION



YJ08X/G 系列液压绞车由内置摆线液压马达，行星齿轮减速器，机械制动器等组成。采用螺纹连接钢结构机架，配置梭阀，平衡阀等控制系统，其结构紧凑、占用空间小，安装采用悬挂式，它适用于船舶、码头和汽车等各种起重和牵引的设备中，更适合车载使用。

YJ08X/G hydraulic winch is made up of inner BM orbit hydraulic motor, planet gearbox decelerator, mechanism brake, etc. It adopts steel structure's machine frame using thread conjunction, the control system of which includes shuttle valve and balance valve, etc, having compact design and small size, the installation of YJ08X/G hydraulic winch adopt hanging way, adapted to lifting and traction facilities, such as shipping、port、car、etc. Especially fit for the carrying car.

● YJ08X/G 外形安装图 INSTALLATION



● 产品介绍 INTRODUCTION



AHW 液压绞盘由液压马达、制动器、卷筒和行星齿轮减速器组成,装于车辆上,由车辆内转向机构的液压系统(或其它液压源)供油,作为车辆自救、互助等牵拉的工具。绞盘的制动由制动器完成,当换向阀处于中位时,液压系统停止向马达供油,制动器自动制动,绞盘处于制动状态。当卷筒处于自由转动状态时。

AHW hydraulic winch is composed of hydraulic motor, braker, drum and planet gear box. It is attached to a motor vehicle and is hydraulically powered by the vehicle’ s power steering system or other hydraulic source. It can provides a effective means for extraction of the vehicle when stuck in mud and can be used for other applications, including rescuing other vehicles from perilous mud holes, moving large objects,etc.A brake is designed for braking the drum. It can be automatically done by operating directional valve.

● 型号意义 ORDERING CODE

AHW 01-B 8000-K1 Y
1 2 3 4 5 6

1、A 型液压绞盘 type A hydraulic winch
2、系列号 series
3、B 表示带刹车装置 B means with braker
4、表示第一层拉力为 8000lbf pull of the 1s t layer is 8000 lbf
5. 内置液压控制系统 (见 1 页说明) Inner hydraulic control system (see page 1)
6. 进出油口尺寸 ports

● 技术参数 TECHNICAL DATA

型号 Type	第一层拉力 Pull of the 1 st layer Lbf/N	第三层拉力 Pull of the 3 st layer Lbf/N	工作压力 Pressure Mpa	卷筒转速 范围 Speed range r/min	钢丝绳直径 Rope dia. mm	容绳量 Rope capacity m	速比 Ratio	配用马达 排量 Motor di- placement ml/r	重量 Weight Kg	L 总长 Length mm
AHW01-B6000	6000/27000	4000/18000	10	5-78	9	20	6	160	42.1	600
AHW01-B8000	8000/36000	5400/24000	10	5-62.5	9	20	6	200	42.5	607
AHW01-B10000	10000/45000	6700/30000	10	5-50	9	20	6	250	43	616

● AHW01-✱-K1Y 形安装图 INSTALLATION

